

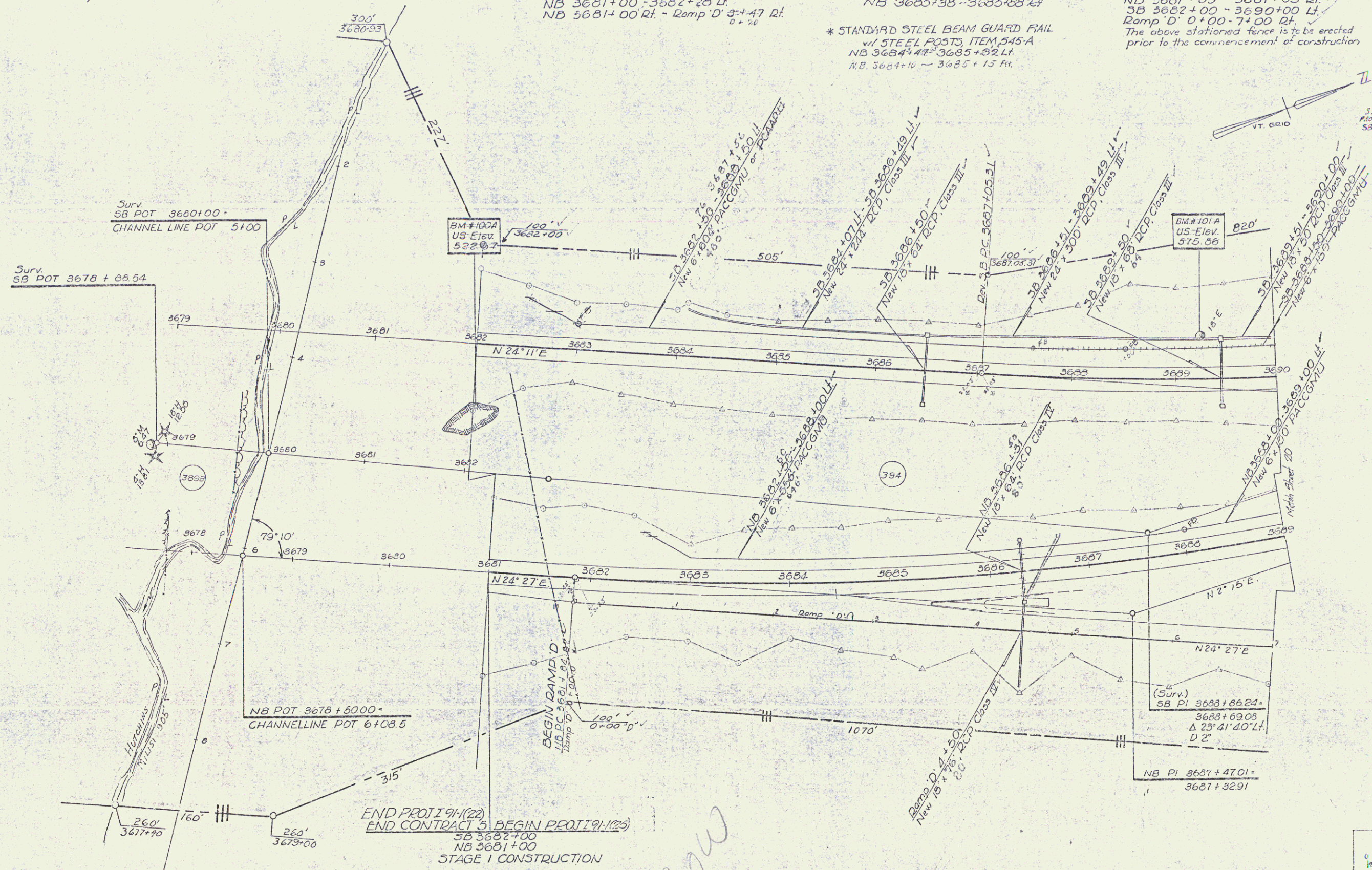
\* BITUMINOUS CONCRETE GUTTER ITEM 334  
Ramp D 4+00 - 4+75 LT

\* THREE CABLE GUARD RAIL  
w/ STEEL POSTS, Item 543.542  
NB 3681+00 - 3682+28 LT  
NB 3681+00 RT - Ramp D 3+47 RT  
0+76

\* GRANITE SLOPE EDGING Item 538-A  
RAMP D 3+36 - 4+06 LT  
NB 3685+38 - 3685+68 RT  
\* STANDARD STEEL BEAM GUARD RAIL  
w/ STEEL POSTS, ITEM 545-A  
NB 3684+47 - 3685+32 LT  
N.B. 3684+10 - 3685+13 RT

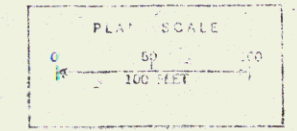
PROPERTY LINE FENCE  
w/ STEEL POSTS, Item 503-D,  
NB 3681+00 - 3681+85 RT  
SB 3682+00 - 3690+00 LT  
Ramp D 0+00 - 7+00 RT  
The above stationed fence is to be erected  
prior to the commencement of construction

STONE FILL FOR SLOPE  
PROTECTION ITEM 342  
SB 3689+10 - 3690+52 LT



END PROJ 191(20) BEGIN PROJ 191(23)  
END CONTRACT 5  
SB 3682+00  
NB 3681+00  
STAGE 1 CONSTRUCTION

*Row*



Stage 2 Construction

\* Indicates Stage 2 Construction  
CONTROL OF ACCESS  
COMPLETE ON THIS SHEET

Ramp D  
HARTLAND - HARTFORD  
151 - 125 (51)  
159 - 121 Interchange  
Sheet 18 of 26  
Sht. 113 of 242