

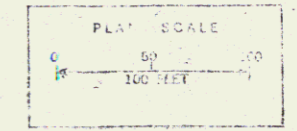
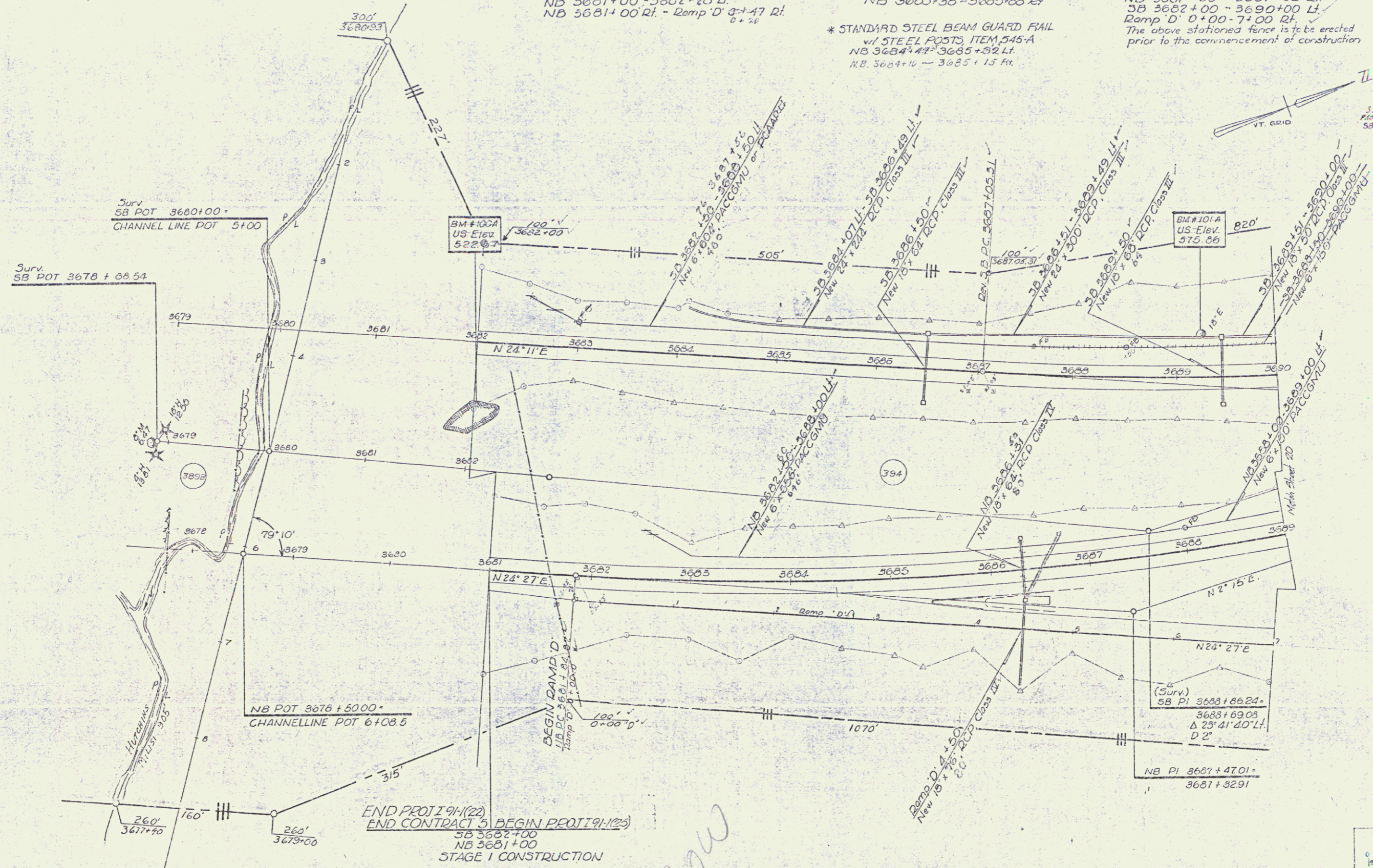
* BITUMINOUS CONCRETE GUTTER ITEM 334
Ramp D 4+00 - 4+75 Lt.

* THREE CABLE GUARD RAIL
w/ STEEL POSTS, Item 543.542
NB 3681+00 - 3682+28 Lt.
NB 3681+00 Rt. - Ramp D 3+47 Rt.
0+28

* GRANITE SLOPE EDGINGS Item 538-A
RAMP D 3+36 - 4+06 Lt.
NB 3685+38 - 3685+68 Rt.
* STANDARD STEEL BEAM GUARD RAIL
w/ STEEL POSTS, ITEM 545-A
NB 3684+41 - 3685+32 Lt.
N.B. 3684+10 - 3685+13 Ft.

PROPERTY LINE FENCE
w/ STEEL POSTS, Item 503-D,
NB 3681+00 - 3681+85 Rt.
SB 3682+00 - 3690+00 Lt.
Ramp D 0+00 - 7+00 Rt.
The above stationed fence is to be erected
prior to the commencement of construction.

STONE FILL FOR SLOPE
PROTECTION ITEM 342
SB 3687+10 - 3690+52 Lt.



Stage 21 Construction

Ramp D
HARTLAND - HARTFORD
151 - 125 (51)
151 - 121 Interchange
Sheet 18 of 26
315 of 242

* Indicates Stage 2 Construction
CONTROL OF ACCESS
COMPLETE ON THIS SHEET

Row