

STONE CURB FOR SOLE PROTECTION
 SALT 3623+00 TO 3626+00
 MEDIAN EXPANSION TO 3626+00 NB RT.

* THREE CABLE GUARD RAIL w/
 STEEL POSTS ITEM 313 542
 SB 3623+00 - 3626+00 RT.
 NB 3623+00 - 3623+56 RT.

DITUMINOUS CONCRETE CURB
 ITEM 305 *
 NB 3623+00 - 3623+56 RT.

JUTE MATTING ITEM 623
 *Med: 3623+00 - 3624+00 RT.
 NB 3623+00 - 3624+00 RT.

Note: Control of Access is Complete on This Sheet

PROPERTY LINE FENCE (STEEL
 POSTS
 ITEM 503-B
 SB 3623+00 - 3631+00 LT
 NB 3626+00 - 3631+00 RT

Southbound
 Rest Area
 See Sheet 7 of 43
 3632+00 - 3638+00 LT

PLAN	3623+00
SECTION	3623+00
DATE	3/1/81
BY	...
CHECKED	...

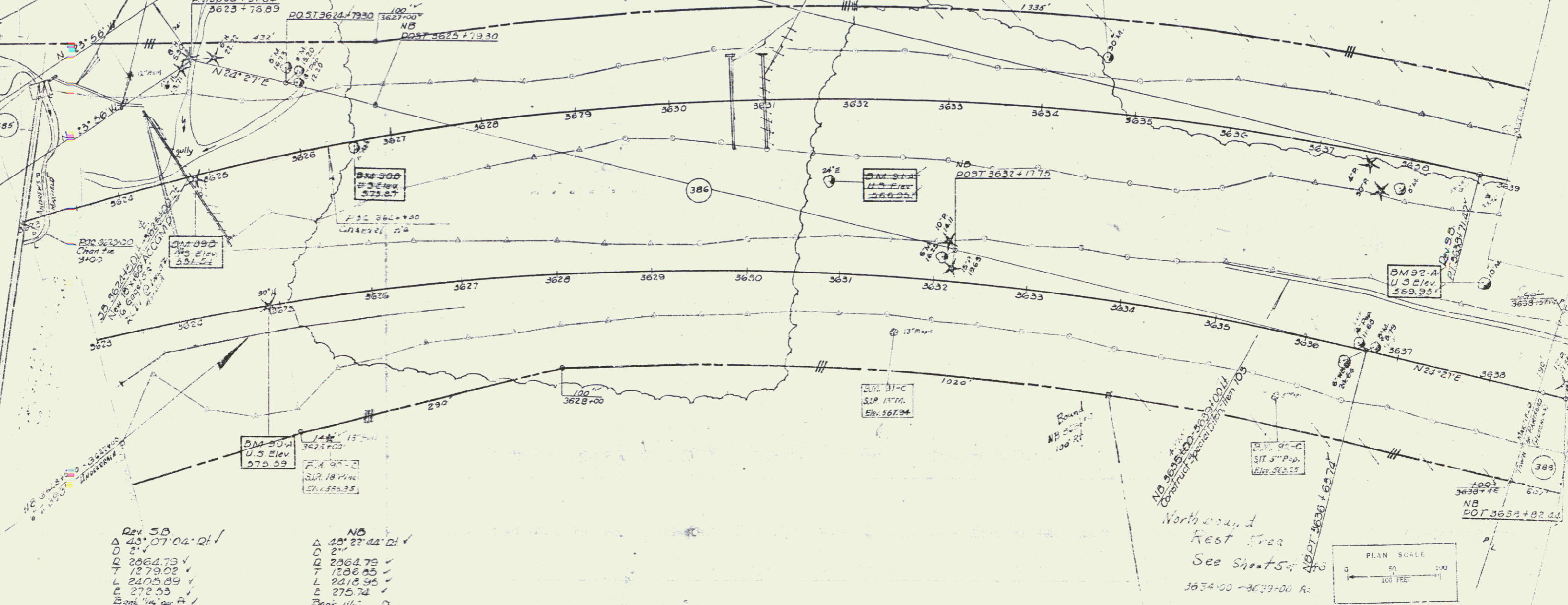
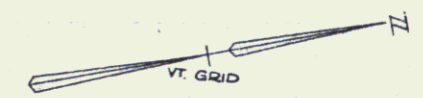
BM 91-D
 3/1 R 30" AL
 Elev. 574.42

BM 89-D
 3/1 R 30" AL
 Elev. 574.14

BM 89-D
 3/1 R 30" AL
 Elev. 574.14

BM 89-D
 3/1 R 30" AL
 Elev. 574.14

BM 91-D
 3/1 R 30" AL
 Elev. 572.46



Rev. 5.0
 Δ 43° 07' 04" RT
 D 2"
 R 2064.73 ✓
 T 1279.02 ✓
 L 2405.89 ✓
 E 272.53 ✓
 Cont. 1/16" per A

NB
 Δ 40° 23' 44" RT
 D 2"
 R 2064.73 ✓
 T 1206.85 ✓
 L 2418.95 ✓
 E 275.74 ✓
 Cont. 1/16" per A

* Stage 2 Construction

Stage 3 Construction

HARTLAND-HARTFORD
 I 91 - I 31
 Sheet 27 of 43
 Sheet 103 of 242