

DATE	DESCRIPTION
10/1/15	ISSUED FOR PERMIT
10/1/15	ISSUED FOR CONSTRUCTION
10/1/15	ISSUED FOR AS-BUILT
10/1/15	ISSUED FOR FINAL

THREE CABLE GUARD RAIL W/STEEL POSTS ITEM 542 *
 NB 3543+00-3551+50 LT
 SB 3543+00-3551+10 LT
 NB 3554+00-3558+40 RT
 SB 3557+00-3559+00 LT

DITUMINOUS CONCRETE CURB ITEM 555 *
 SB 3543+30-3551+10 LT
 NB 3558+00-3558+30 RT
 NB 3557+00-3557+30 LT

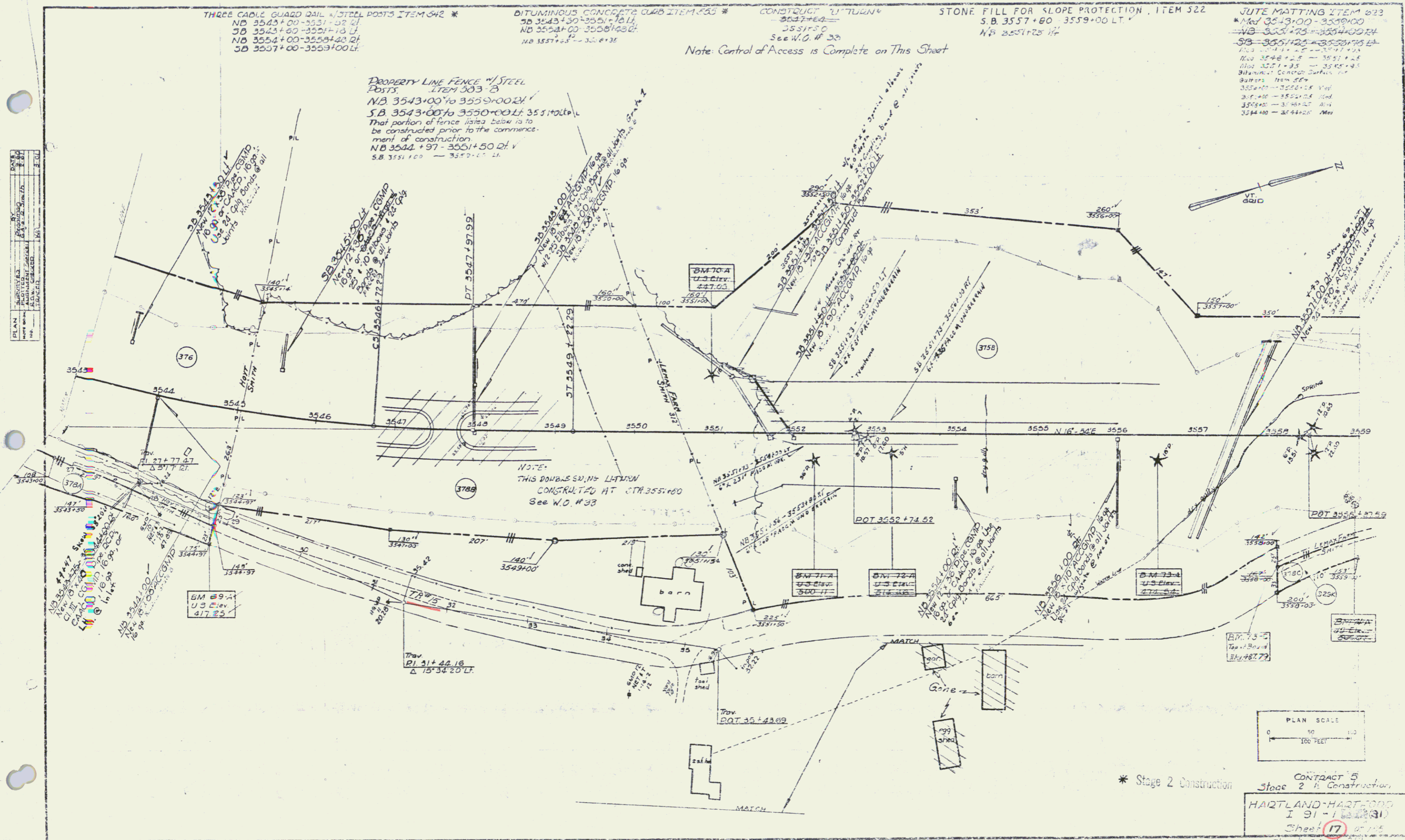
CONSTRUCT "U" TURN *
 SB 3547+00
 SB 3551+50
 See W.O. # 33

STONE FILL FOR SLOPE PROTECTION ITEM 522
 S.B. 3557+80-3559+00 LT
 NB 3551+25 RT

JUTE MATTING ITEM 523
 NB 3543+00-3559+00
 NB 3551+25-3554+00 RT
 SB 3551+25-3558+40 RT
 NB 3548+25-3551+25
 NB 3551+35-3555+35
 Bituminous Concrete Surface for
 Gutters Item 554
 3554+00-3558+40 RT
 3554+00-3558+40 RT
 3554+00-3558+40 RT

Note: Control of Access is Complete on This Sheet

PROPERTY LINE FENCE W/STEEL
 POSTS
 ITEM 503 B
 NB 3543+00 to 3559+00 LT
 S.B. 3543+00 to 3559+00 LT
 That portion of fence listed below is to
 be constructed prior to the commence-
 ment of construction.
 NB 3544+97-3551+50 RT V
 S.B. 3551+00-3557+00 LT



NOTE:
 THIS DOWNSIDE LANE
 CONSTRUCTED AT STA. 3551+80
 See W.O. # 33

* Stage 2 Construction

CONTRACT 5
 Stage 2 is Construction
 HARTLAND-HARTFORD
 I 91-1
 Sheet 17 of 115
 Sheet 98 of 115