

WHITE MATTE: 11-10-55
 3505 000-371-500
 3496 000-371-500
 3501 000-371-500
 3506 000-371-500
 3508 000-371-500

11-10-55
 ITEM: 500 512
 2401 000-371-52

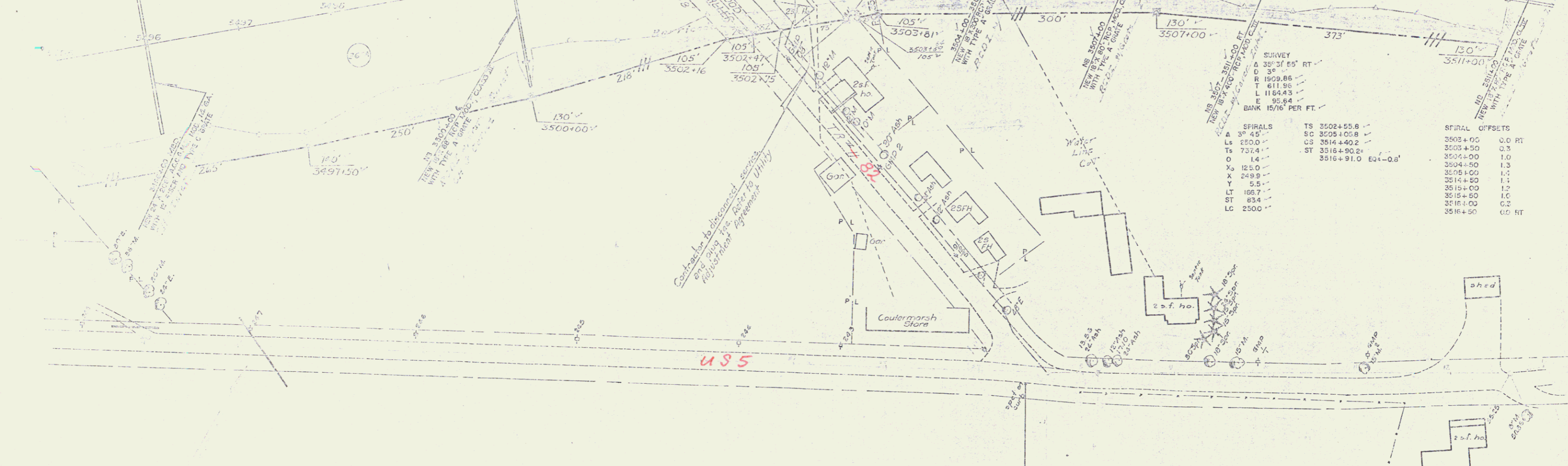
TWO (2) LC GUARD RAIL WITH WOOD POLYMER 500
 (4) 10' - 11' FT. (DUMP HIGHWAY 11)

11-10-55 STA 64+00
 BEGIN CONSTRUCTION



PROPOSED BY
 B 1102.00
 T 211.01
 L 417.55
 E 19.27
 BANK 7/16' PER FT

BM 41 61-A
 U.S. Elev.
 403.62



SHIRVEY
 A 35° 31' 59" RT
 D 3'
 R 1909.86
 T 611.96
 L 11644.3
 E 90.84
 ST 834
 LC 2500

SPIRALS		SPIRAL OFFSETS	
A	35° 31' 59"	TS 35024+55.8	0.0 RT
Ls	250.0	SC 35054+05.8	0.3
Ts	737.4	CS 3514+40.2	1.0
O	14	ST 3516+90.2	1.3
Xs	125.0	3516+91.0	1.2
X	249.9		1.1
LT	105.7		1.2
ST	834		1.0
LC	2500		0.0 RT

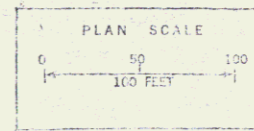
Contractor to determine exact
 location of all utility
 lines and also the location of
 all other structures.

PROPERTY LINE FENCE WITH STEEL POSTS, ITEM 503
 3503+00-RT 3503+00-RT
 3503+00-RT 3503+00-RT

DEMOLITION AND REMOVAL OF BUILDINGS, ITEM 506
 3503+00-RT SHED
 3503+00-RT 2 B.R. HOUSE

Minimum Clear Height for
 Overhead Lines 14' 0"

11-10-55
 U.S. Elev.
 400.667



CONTROL OF ACCESS IS
 COMPLETE ON THIS SHEET
 STAGE 1 CONSTRUCTION
 HARTLAND-HARTFORD
 PROJECT 1 91-1(22) (31)
 Sheet 22 of 22 Sheets
 CONTROL 4-2
 SHEET 22 OF 22