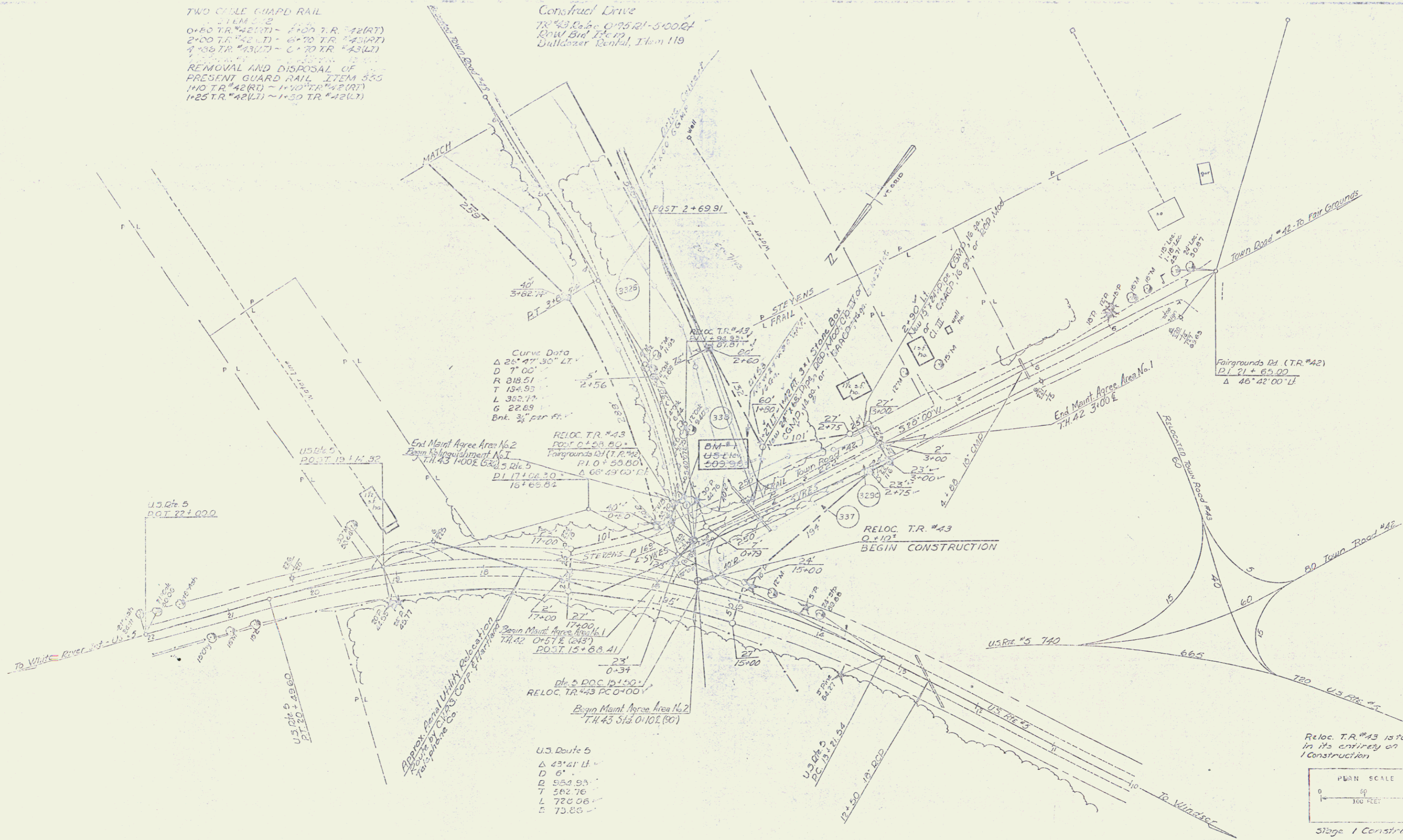


TWO CABLE GUARD RAIL
 21 LM 512
 0+80 TR #42(RT) - 1+00 TR #42(RT)
 2+00 TR #42(LT) - 6+70 TR #43(RT)
 7+80 TR #43(LT) - 8+70 TR #43(LT)

REMOVAL AND DISPOSAL OF
 PRESENT GUARD RAIL ITEM 505
 1+00 TR #42(RT) - 1+40 TR #42(RT)
 1+25 TR #42(LT) - 1+50 TR #42(LT)

Construct Drive
 TR #43, Sta. 0+75.21 - 5+00.24
 ROW Bid Item
 Bulldozer Rental, Item 119

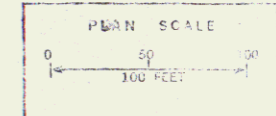


Curve Data
 Δ 26° 47' 30" LT
 D 7' 00"
 R 218.51
 T 134.93
 L 352.14
 G 22.69
 Bkt. 3" per ft.

RELOC. T.R. #43
 PC 0+00.00
 PVI 0+53.00
 PT 107+00.00
 Δ 68° 49' 00" LT
 16769.81

U.S. Route 5
 Δ 43° 41' LT
 D 6'
 R 563.93
 T 582.76
 L 720.06
 E 73.80

Reloc. T.R. #43 is to be built
 in its entirety on Stage
 1 Construction



Stage 1 Construction
 Town Road #43
 HARLAND - HARTFORD
 E 51-1(22)
 Contract 1,
 Sheet 22 of 163