

\*STEEL PLANK GUARDRAIL W/  
STEEL POSTS - ITEM 543-A 543-A  
3272+00-3274+00 NB-LT  
3272+00-3274+00 NB-RT  
3273+00-3274+00 NB-LT  
3273+00-3274+00 NB-RT

\*THREE CABLE GUARD RAIL W/  
STEEL POSTS - ITEM 543 542  
3275+00-3276+00 NB-RT  
3275+00-3276+00 SB-RT  
3276+00-3277+00 NB-RT  
3277+00-3278+00 NB-LT  
DRILLING & PLACING OF SOLID ROCK  
SUBGRADE, MOD. ITEM 114  
3274+50 - 3277+50 NB 114  
3274+50 - 3277+50 NB 114  
3274+50 - 3277+50 NB 114

DENOLITION & REMOVAL OF BUILDING  
ITEM 586  
3274+50 NB. E

\*BITUMINOUS CONCRETE CURB  
ITEM 555  
3275+00-3278+00 SB-RT  
3278+30-3281+00 NB-RT

PROPERTY LINE FENCE ITEM 553-D  
3274+00-3275+30 SB-LT  
3274+00-3275+30 NB-RT  
3275+00-3276+00 SB-LT  
3275+00-3276+00 NB-RT

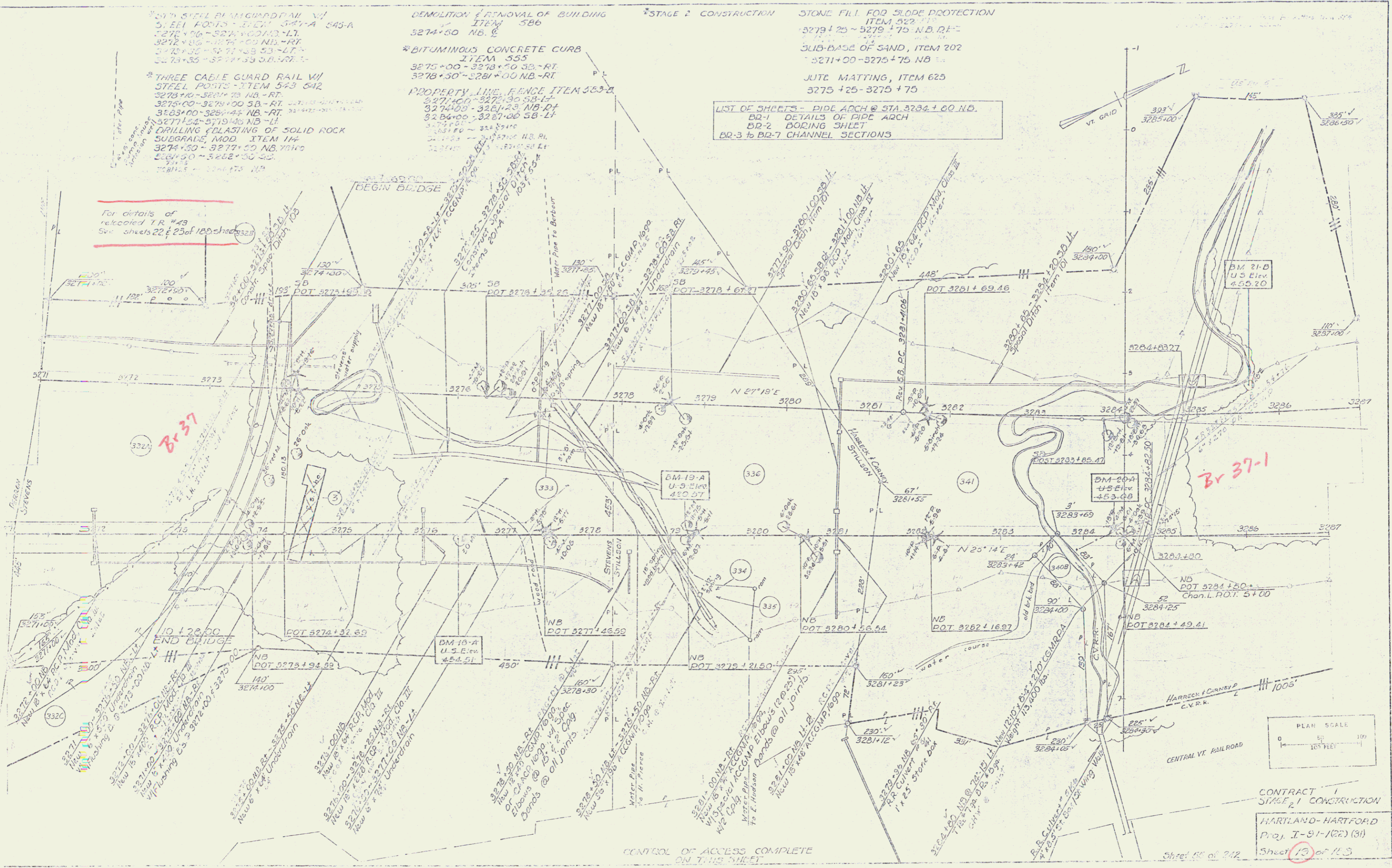
\*STAGE 2 CONSTRUCTION

STONE FILL FOR SLOPE PROTECTION  
ITEM 522 510  
3279+75 - 3279+75 NB. RT

SUB-BASE OF SAND, ITEM 202  
3271+00 - 3275+75 NB

JUTE MATTING, ITEM 625  
3275+25 - 3275+75

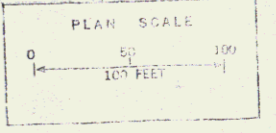
LIST OF SHEETS - BIDE ARCH @ STA. 3284+00 NB.  
BR-1 DETAILS OF PIPE ARCH  
BR-2 BORING SHEET  
BR-3 to BR-7 CHANNEL SECTIONS



For details of  
relocated TR #49  
See sheets 22 & 23 of 180 sheets

Br-37

Br-37-1



CONTRACT 1  
STAGE 2 CONSTRUCTION  
HARTLAND-HARTFORD  
Proj. I-91-102 (31)  
Sheet 13 of 13

CONTROL OF ACCESS COMPLETE  
ON THIS SHEET