

Standard Scale
 V/S/N: 1/4" = 100' - 1/8" = 50'

THREE CALIF. GUARD RAIL W/
 STEEL POSTS - ITEM 512
 3239+00 - 3242+24 NB-RT
 3239+00 - 3241+88 SB-LT

BITUMINOUS CONCRETE CURB
 ITEM 553
 3239+00 - 3241+25 SB-LT

SUB-BASE OF SAND, ITEM 202
 3242+80 - 3254+75 NB
 3245+75 - 3250+75 SB

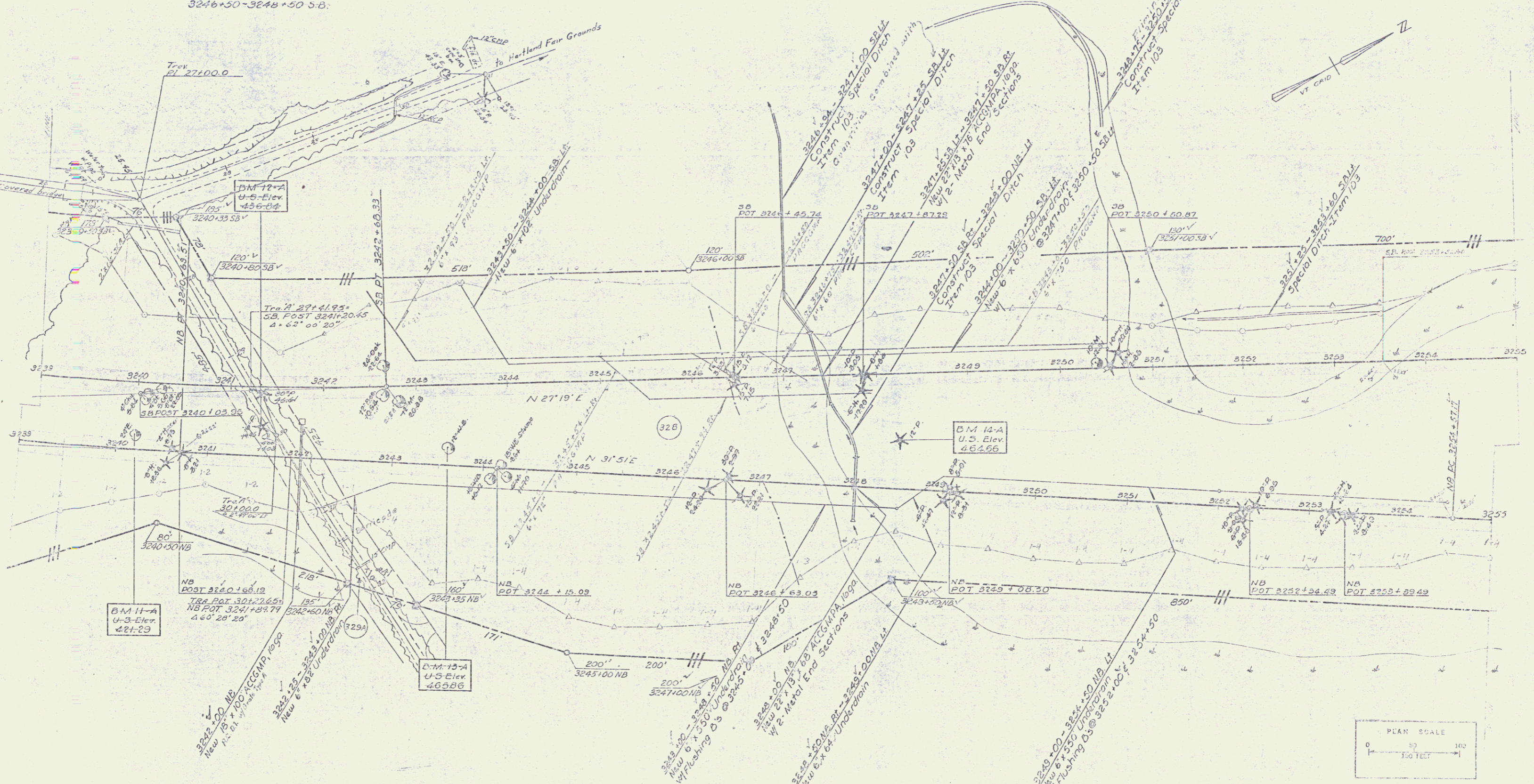
MUCK EXCAVATION, ITEM 116
 3250+75 - 3254+25 SB-LT

JUTE MATTING, ITEM 623
 3242+00 - 3250+50 SB-LT
 3246+50 - 3251+00 SB-RT
 3243+50 - 3246+00 NB-RT
 3244+50 - 3251+00 NB-LT
 3247+75 - 3250+50 NB-RT

DRILLING & BLASTING OF SOLID ROCK
 SUBGRADE, MCD - ITEM 114
 3242+00 - 3243+50 SB
 3244+50 - 3245+50 NB
 3246+50 - 3248+50 SB

STAGE 2 CONSTRUCTION

PROPERTY LINE FENCE, ITEM 503-B
 3245+80 - 3255+00 SB-LT
 3247+00 - 3254+00 NB-RT



CONTRACT 1
 STAGE 2 CONSTRUCTION
 HARTLAND - HARTFORD
 Proj. 2-91-122 (31)
 Sheet 17 of 188

CONTROL OF ACCESS COMPLETE
 ON THIS SHEET

Sheet 51 of 242

Con
 10