

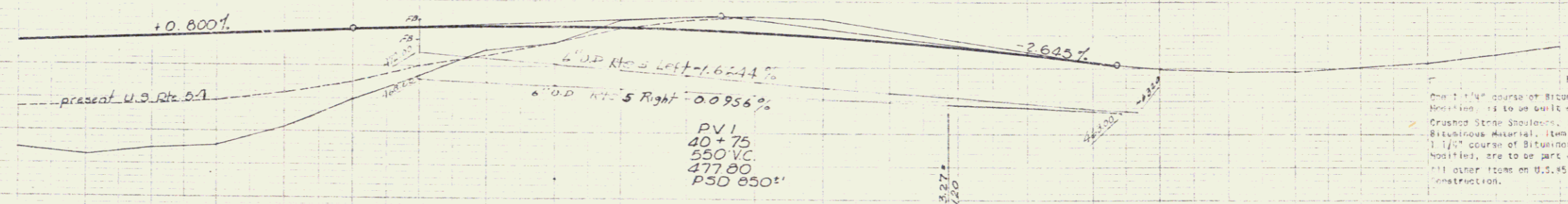
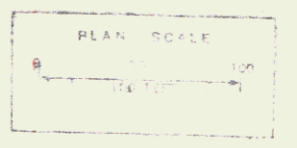
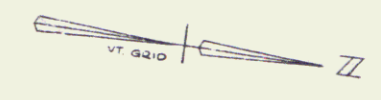
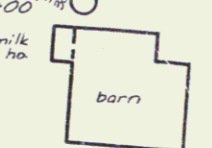
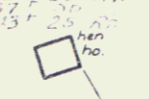
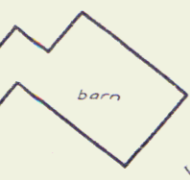
THREE CABLE GUARD RAIL w/
STEEL POSTS, ITEM 542
35+50 - 37+45 LF

CONSTRUCT DRIVES
38+00 LF
38+50 RI

SUB-BASE OF SAND
ITEM 202
35+50 - 43+50

Plan Curve R/L
Invariable Point
Station 41+00.28

EXCAVATE 11" x 11" CURB
SURFACE ON REAL MYS ROAD
37+25 - 38+25



NOTES: U.S. 5
1. 1 1/2" course of Bituminous Concrete Pavement, Item 361-B.
2. 1 1/2" course of Bituminous Concrete Pavement, Item 361-B.
3. 1 1/2" course of Bituminous Concrete Pavement, Item 361-B.
4. 1 1/2" course of Bituminous Concrete Pavement, Item 361-B.
5. 1 1/2" course of Bituminous Concrete Pavement, Item 361-B.
6. 1 1/2" course of Bituminous Concrete Pavement, Item 361-B.
7. 1 1/2" course of Bituminous Concrete Pavement, Item 361-B.
8. 1 1/2" course of Bituminous Concrete Pavement, Item 361-B.
9. 1 1/2" course of Bituminous Concrete Pavement, Item 361-B.
10. 1 1/2" course of Bituminous Concrete Pavement, Item 361-B.

STAGE 2 CONSTRUCTION
WEATHERFIELD - WINDY HARTLAND
PROJ. I-91-115-2-1
Dwg. No. 2214-57.0-30+00
Sheet 25 of 287
Sheet 113 of 188