

STONE FILL for SLOPE PROTECTION
ITEM 522
3067+71-3067+91 5B Lt
3067+99-3068+19 5B Lt
3068+23-3070+00 NB Lt

RIP-RAP for BANK PROTECTION-MSB
FOR CULVERT ENDS-ITEM 526
3067+91-3067+99 3B Lt
3068+20-3068+28 NB Lt

THREE CABLE GUARD RAILS of STEEL POSTS
ITEM 522
3067+00-3071+50 NB Lt

STAGE 2 CONSTRUCTION

DRILLING & BLASTING of SOLID ROCK
SUBGRADE, MOD. ITEM 114
5B
3058+00-3058+50 3061+50-3067+50
3059+50-3063+50 3071+00-3074+00
3070+50-3074+00

MULTI EXCAVATION ITEM 114
NO. 31 3061+00-3061+50

GATES FOR PROPERTY LINE
FENCE ITEM 563-C
3069+50 3B Lt
3068+10-3068+10

CONSTRUCT DRIVE (PER UTILITY
EMERGENCY ACCESS AGREEMENT)
3069+00 3B Lt
3069+12

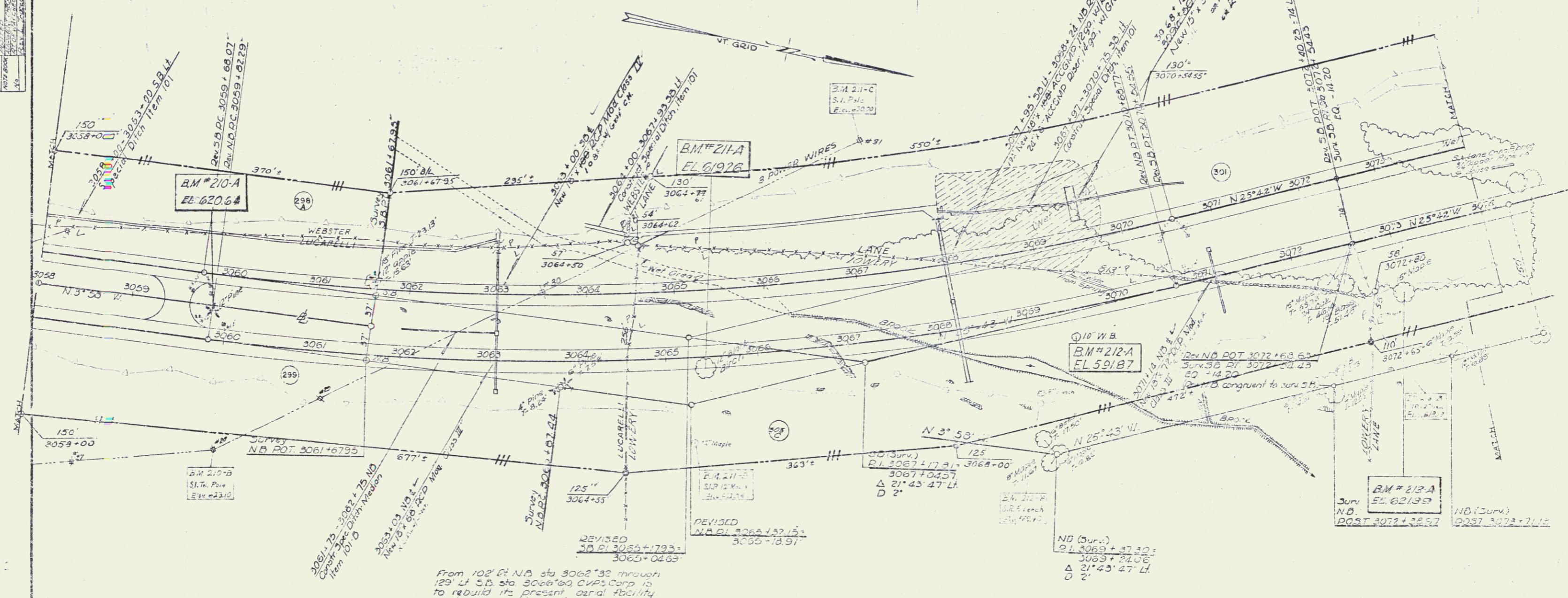
JUTE MATTING ITEM 623
3068+00-3068+25 Med V

* CONSTRUCT U-TURN
3059+50 Median

PROPERTY LINE FENCE w/
STEEL POSTS Mod. ITEM 563-B
3058+00-3074+00 NB Lt
3074+00-3074+00 5B Lt
3058+16-3074+00 3B Lt

NB & SB Curve Data
REVISED (f Survey)
Δ 21°43'47" Lt
D 2'
Q 2862.79'
T 549.85'
L 1086.48'
E 52.28'
bank 7% per foot

PLAN	DATE	BY
NO. 1	10/2/23	J.P.A.
NO. 2	10/3/23	J.P.A.
NO. 3	10/3/23	J.P.A.
NO. 4	10/3/23	J.P.A.
NO. 5	10/3/23	J.P.A.
NO. 6	10/3/23	J.P.A.
NO. 7	10/3/23	J.P.A.
NO. 8	10/3/23	J.P.A.
NO. 9	10/3/23	J.P.A.
NO. 10	10/3/23	J.P.A.



From 102' Lt NB sta 3062+39 through
125' Lt SB sta 3066+00 CVPs Corp is
to rebuild its present aerial facility
Existing poles etc. without this area
are to be removed by CVPs Corp
New structures are to be placed
out of ROW Limits.

ROW REV #3 I.P.A. 10-3-23
ROW REV #4 I.P.A. 10-3-23

STAGE 2 CONSTRUCTION
WEATHERSFIELD-WINDSOR ROADLAND
PROJECT I 91-11501

Sheet 37 of 166
Sheet 37 of 166

Control of Access is complete on this sheet. Except at sta 3069+00. Access is allowed at this point per Utility Company Emergency Access Agreement.