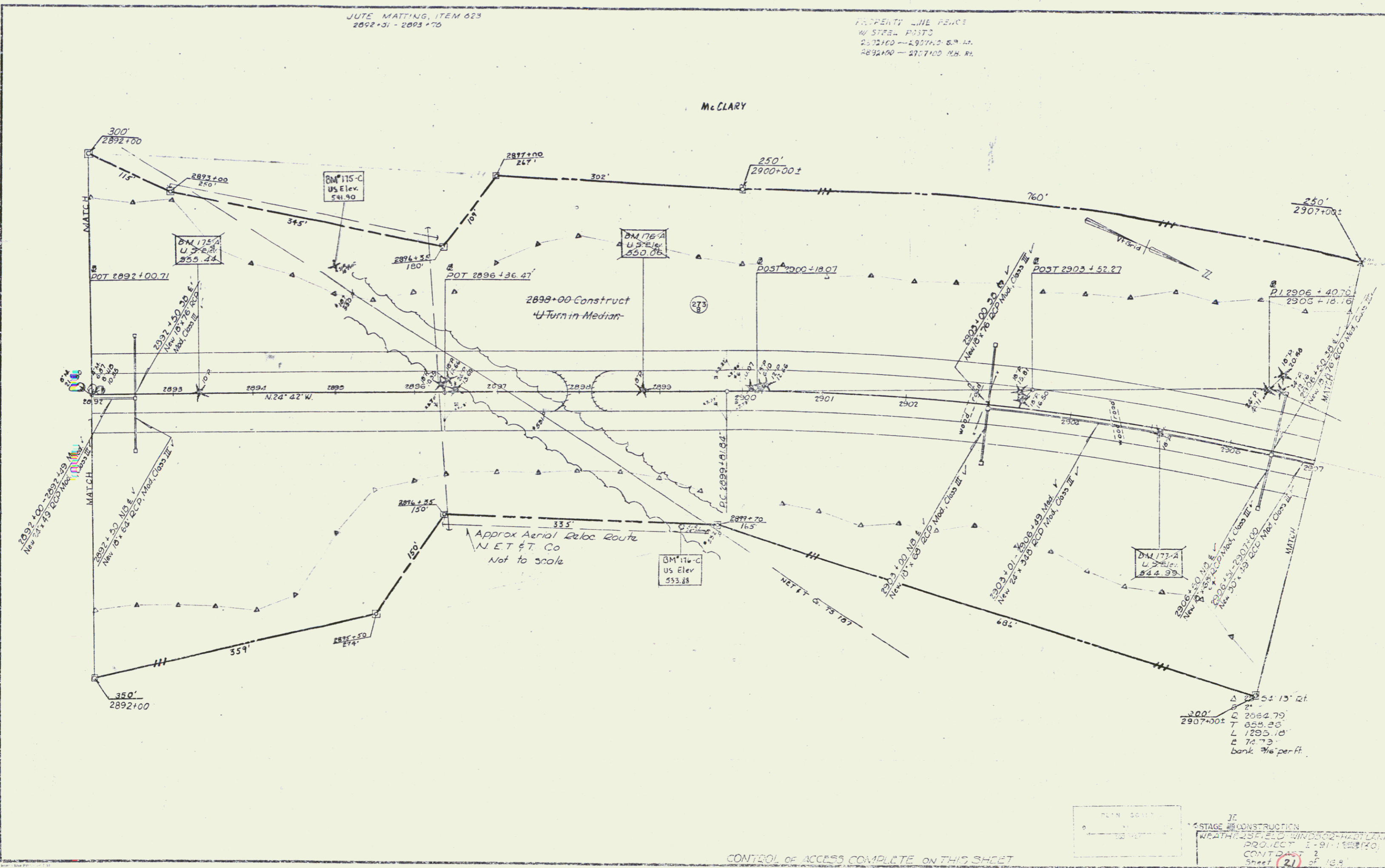


JUTE MATTING, ITEM 623
2892+31 - 2893+76

PROPERTY LINE PERCE
BY STAKE POSTS
2892+00 - 2907+00 S.W. 1/4
2892+00 - 2907+00 N.W. 1/4

McCLARY

DATE	12-22-70
BY	W. J. HARRIS
PROJECT	STAGE #8 CONSTRUCTION
LOCATION	WEATHERFIELD WINDSOR-HARTLAND
PROJECT NO.	1-91-1582(10)
SHEET NO.	21
TOTAL SHEETS	25



Δ 2895+15 15' rt
 Δ 2907+00
 E 2064.79
 T 855.26
 L 1295.10
 E 74.73
 bank 7/16 per ft.

CONTROL OF ACCESS COMPLETE ON THIS SHEET

JE
 STAGE #8 CONSTRUCTION
 WEATHERFIELD WINDSOR-HARTLAND
 PROJECT 1-91-1582(10)
 CONTROL 2
 Sheet 21 of 25
 sheet 62 of 183