

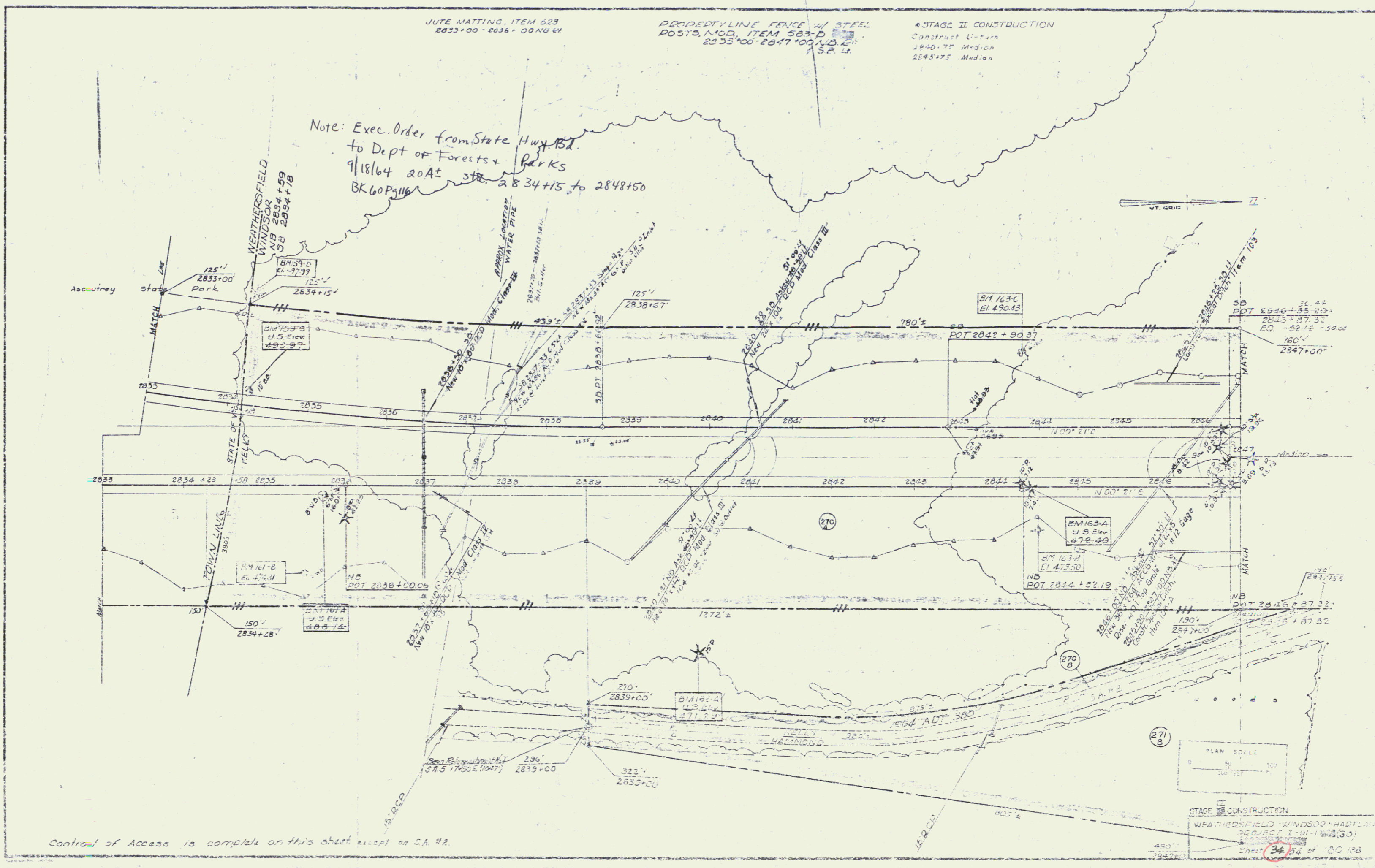
JUTE MATTING, ITEM 623
2833+00 - 2836+00 NB & SB

PROPERTYLINE FENCE w/ STEEL
POST'S, MOD. ITEM 583-D
2835+00 - 2847+00 NB & SB

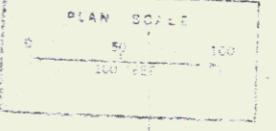
*STAGE II CONSTRUCTION
Construct U-turn
1940.75 Median
2845+75 Median

Note: Exec. Order from State Hwy. Bd.
to Dept of Forests & Parks
9/18/64 20A+ STR. 2834+15 to 2848+50
BK 60P 5116

PLAN	SUBMITTED	DATE
NO. 1	7/10/64	7/10/64
NO. 2	7/10/64	7/10/64
NO. 3	7/10/64	7/10/64
NO. 4	7/10/64	7/10/64
NO. 5	7/10/64	7/10/64
NO. 6	7/10/64	7/10/64
NO. 7	7/10/64	7/10/64
NO. 8	7/10/64	7/10/64
NO. 9	7/10/64	7/10/64
NO. 10	7/10/64	7/10/64



Control of Access is complete on this sheet except on SA #2.



STAGE II CONSTRUCTION
WEATHERS FIELD WINDSOOK HADLAND
PROJECT I-91-1W&S(30)
Sheet 34 of 100