

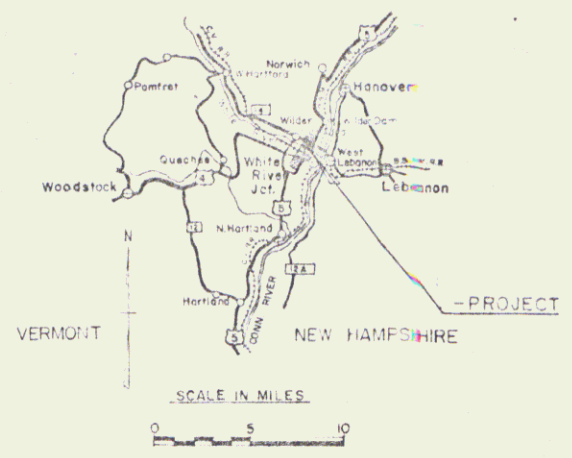
- 1 SHEET NO. 1 TITLE PAGE
- 2 BRIDGE QUANTITY SHEET
- 3-5 PLAN AND PROFILE SHEETS
- 6 P-2 BARRICADES, SIGNS AND LIGHTS (BRIDGE)
- 7 P-3 CONSTRUCTION IDENTIFICATION SIGNS
- 8 J-1 MARKERS
- 9 J-4 FIELD OFFICE
- 10 PLAN AND ELEVATION - (1" = 50' SCALE)
- 11-12 PLAN AND ELEVATION - (1" = 20' SCALE)
- 13 GENERAL NOTES
- 14 PRELIMINARY NORMAL CROSS SHEET
- 15-16 CROSS SHEETS
- 17 FRAMING PLAN, DETAILS, TYPICAL CROSS-SECTION
- 18 FRAMING PLAN, DETAILS
- 19-22 GIRDER DETAILS
- 23 MOMENT, DEAD LOAD DEFLECTION, SHEARS, REACTIONS
- 24 ROADWAY EXPANSION DEVICE
- 25 BLANK
- 26 BEARING DEVICES
- 27 ABUTMENT NO. 1 NB
- 28 ABUTMENT NO. 1 SB
- 29 ABUTMENT NO. 2 NB AND SB
- 30 PIER NO. 1 NB AND SB
- 31 PIER NO. 2 NB AND SB
- 32 PIER NO. 3 NB AND SB
- 33 PIER NO. 4 NB AND SB
- 34 PIER NO. 5 NB AND SB
- 35 PIER NO. 6 NB AND SB
- 36 APPROACH SLABS, NO. 1 AND NO. 2 NB AND SB
- 37-40 REINFORCING STEEL, DETAIL SHEETS
- 41-42 CHANNEL SECTIONS
- 43-60 ROADWAY CROSS SECTIONS
- SP-1-62, DETAILS "B" AND "C"
- SP-2-62, DETAIL "D"
- SB-M-14, SHEETS 1 AND 2
- 1" = 40' DETAILS
- 1" = 80' DETAILS

STATE OF VERMONT
DEPARTMENT OF HIGHWAYS

PROPOSED IMPROVEMENT

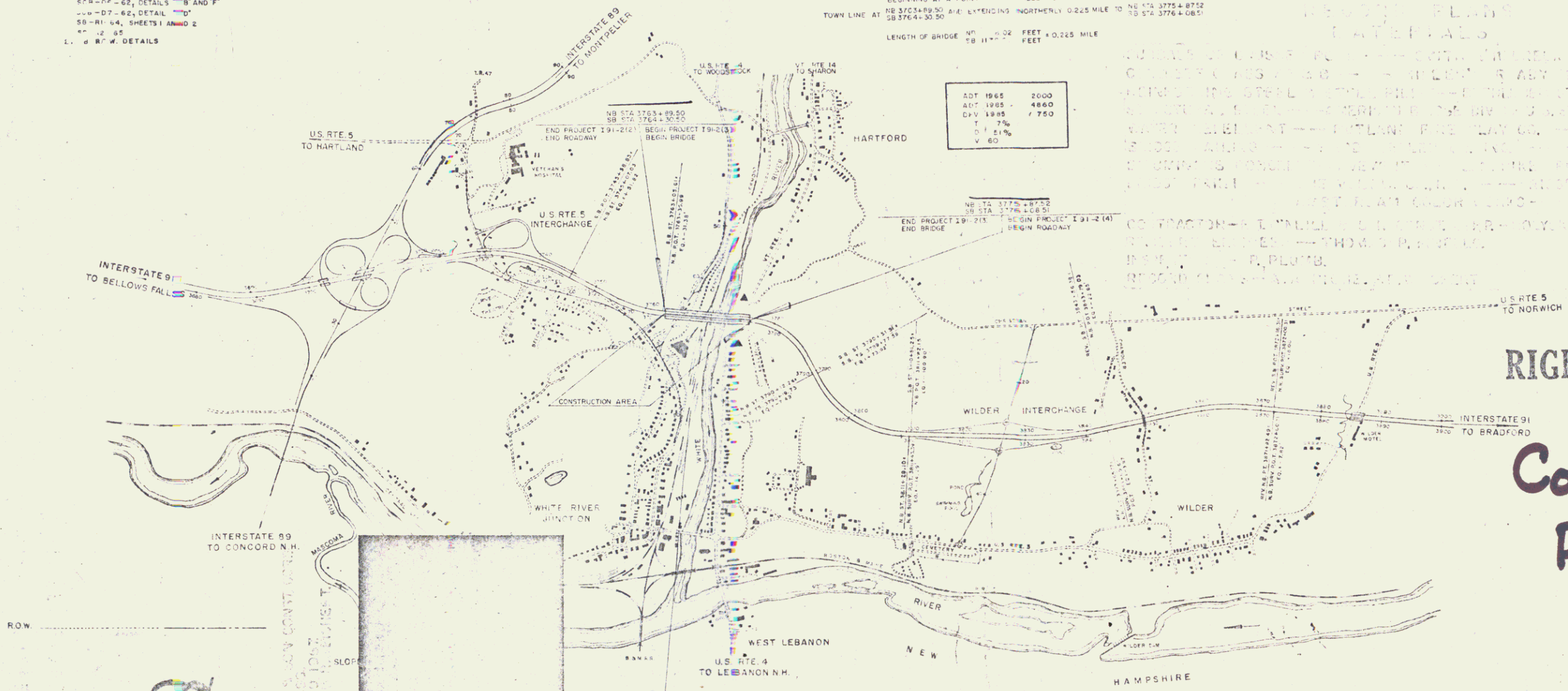
INTERSTATE PROJECT
TOWN OF HARTFORD
COUNTY OF WINDSOR
INTERSTATE ROUTE 91
BELLOWS FALLS - BRADFORD ROAD
STAGE I

Pin # 99R050



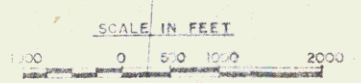
BEGINNING AT A POINT 1.111 MILES NORTH OF THE HARTFORD-NORWICH
TOWN LINE AT NB STA 3764+30.50 P.M. EXTENDING NORTHEASTLY 0.225 MILE TO NB STA 3774+87.52
SB STA 3764+30.50 TO SB STA 3774+87.52
LENGTH OF BRIDGE NB 11" = 0.225 MILE FEET
SB 11" = 0.225 MILE FEET

ADT 1965	2000
ADT 1985	4860
ADT 1995	7750
T	3%
D	2.1%
V	60'



RIGHT-OF-WAY
and
Construction
PLANS

163
91



POOR ORIGINAL COPY

MP 70.53-73.31

NOV 12 1973

R.H. Arnold	E. J. Hurler	L. Brown	J. Chan	A. M. Kane	G. J. [unclear]
11/27/64	11/27/64	11/27/64	11/27/64	11/27/64	11/27/64

STATE OF VERMONT
DEPARTMENT OF HIGHWAYS

DESIGN AND CONSTRUCTION

INTERSTATE PROJECT

TOWN OF HARTFORD
COUNTY OF WINDSOR
INTERSTATE ROUTE 91
WINDSOR-NORWICH ROAD

BEGINNING AT A POINT 5.486 MILES NORTH OF THE HARTLAND-HARTFORD TOWN LINE AND EXTENDING NORTHERLY 2.43 MILES -
LENGTH OF ROADWAY 3.916 FEET + 0.31 MILES.
LENGTH OF BRIDGES 3,511 FEET + 0.27 MILE.
LENGTH OF PROJECT 11,975.335 FEET + 0.24 MILES.

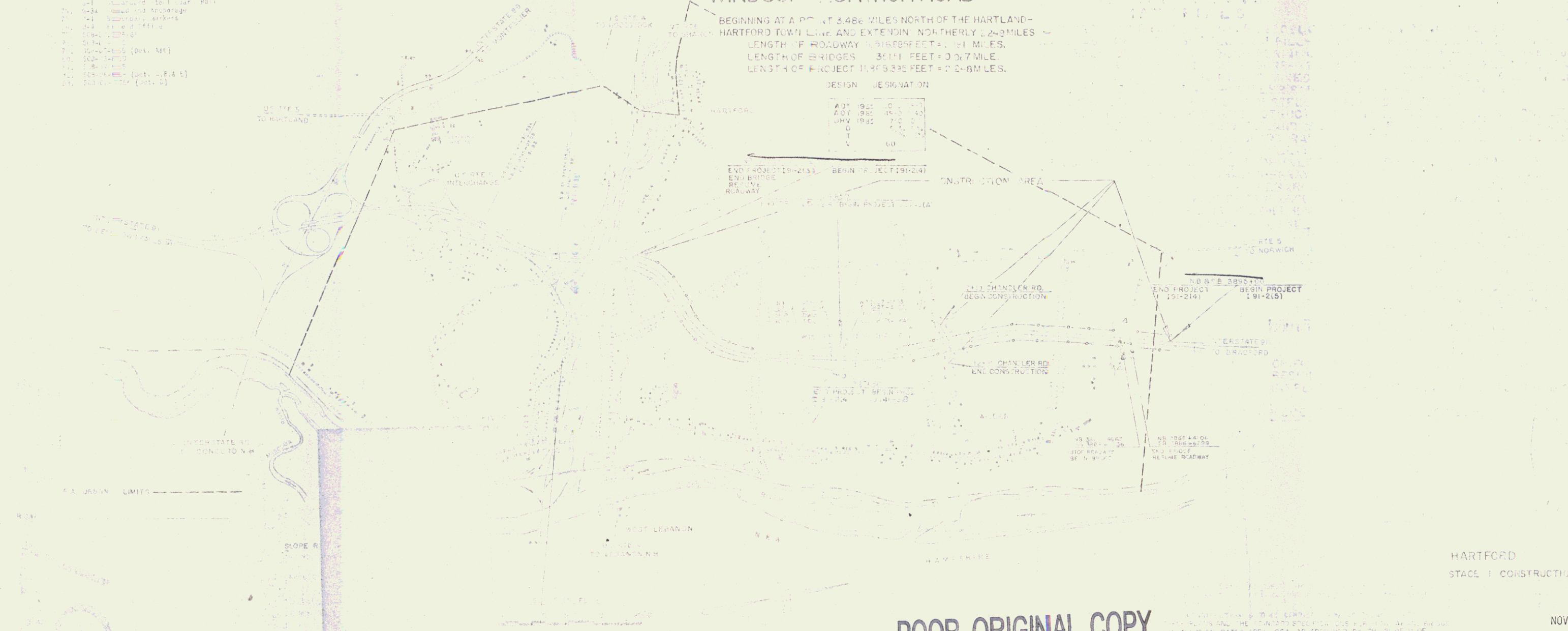
DESIGN DESIGNATION

A	1982	C	1982
Z	1982	W	1982
U	1982	T	1982
V	1982	U	1982



- 1.0100 - 1.0100
- 1.0101 - 1.0101
- 1.0102 - 1.0102
- 1.0103 - 1.0103
- 1.0104 - 1.0104
- 1.0105 - 1.0105
- 1.0106 - 1.0106
- 1.0107 - 1.0107
- 1.0108 - 1.0108
- 1.0109 - 1.0109
- 1.0110 - 1.0110
- 1.0111 - 1.0111
- 1.0112 - 1.0112
- 1.0113 - 1.0113
- 1.0114 - 1.0114
- 1.0115 - 1.0115
- 1.0116 - 1.0116
- 1.0117 - 1.0117
- 1.0118 - 1.0118
- 1.0119 - 1.0119
- 1.0120 - 1.0120
- 1.0121 - 1.0121
- 1.0122 - 1.0122
- 1.0123 - 1.0123
- 1.0124 - 1.0124
- 1.0125 - 1.0125
- 1.0126 - 1.0126
- 1.0127 - 1.0127
- 1.0128 - 1.0128
- 1.0129 - 1.0129
- 1.0130 - 1.0130
- 1.0131 - 1.0131
- 1.0132 - 1.0132
- 1.0133 - 1.0133
- 1.0134 - 1.0134
- 1.0135 - 1.0135
- 1.0136 - 1.0136
- 1.0137 - 1.0137
- 1.0138 - 1.0138
- 1.0139 - 1.0139
- 1.0140 - 1.0140
- 1.0141 - 1.0141
- 1.0142 - 1.0142
- 1.0143 - 1.0143
- 1.0144 - 1.0144
- 1.0145 - 1.0145
- 1.0146 - 1.0146
- 1.0147 - 1.0147
- 1.0148 - 1.0148
- 1.0149 - 1.0149
- 1.0150 - 1.0150
- 1.0151 - 1.0151
- 1.0152 - 1.0152
- 1.0153 - 1.0153
- 1.0154 - 1.0154
- 1.0155 - 1.0155
- 1.0156 - 1.0156
- 1.0157 - 1.0157
- 1.0158 - 1.0158
- 1.0159 - 1.0159
- 1.0160 - 1.0160
- 1.0161 - 1.0161
- 1.0162 - 1.0162
- 1.0163 - 1.0163
- 1.0164 - 1.0164
- 1.0165 - 1.0165
- 1.0166 - 1.0166
- 1.0167 - 1.0167
- 1.0168 - 1.0168
- 1.0169 - 1.0169
- 1.0170 - 1.0170
- 1.0171 - 1.0171
- 1.0172 - 1.0172
- 1.0173 - 1.0173
- 1.0174 - 1.0174
- 1.0175 - 1.0175
- 1.0176 - 1.0176
- 1.0177 - 1.0177
- 1.0178 - 1.0178
- 1.0179 - 1.0179
- 1.0180 - 1.0180
- 1.0181 - 1.0181
- 1.0182 - 1.0182
- 1.0183 - 1.0183
- 1.0184 - 1.0184
- 1.0185 - 1.0185
- 1.0186 - 1.0186
- 1.0187 - 1.0187
- 1.0188 - 1.0188
- 1.0189 - 1.0189
- 1.0190 - 1.0190
- 1.0191 - 1.0191
- 1.0192 - 1.0192
- 1.0193 - 1.0193
- 1.0194 - 1.0194
- 1.0195 - 1.0195
- 1.0196 - 1.0196
- 1.0197 - 1.0197
- 1.0198 - 1.0198
- 1.0199 - 1.0199
- 1.0200 - 1.0200

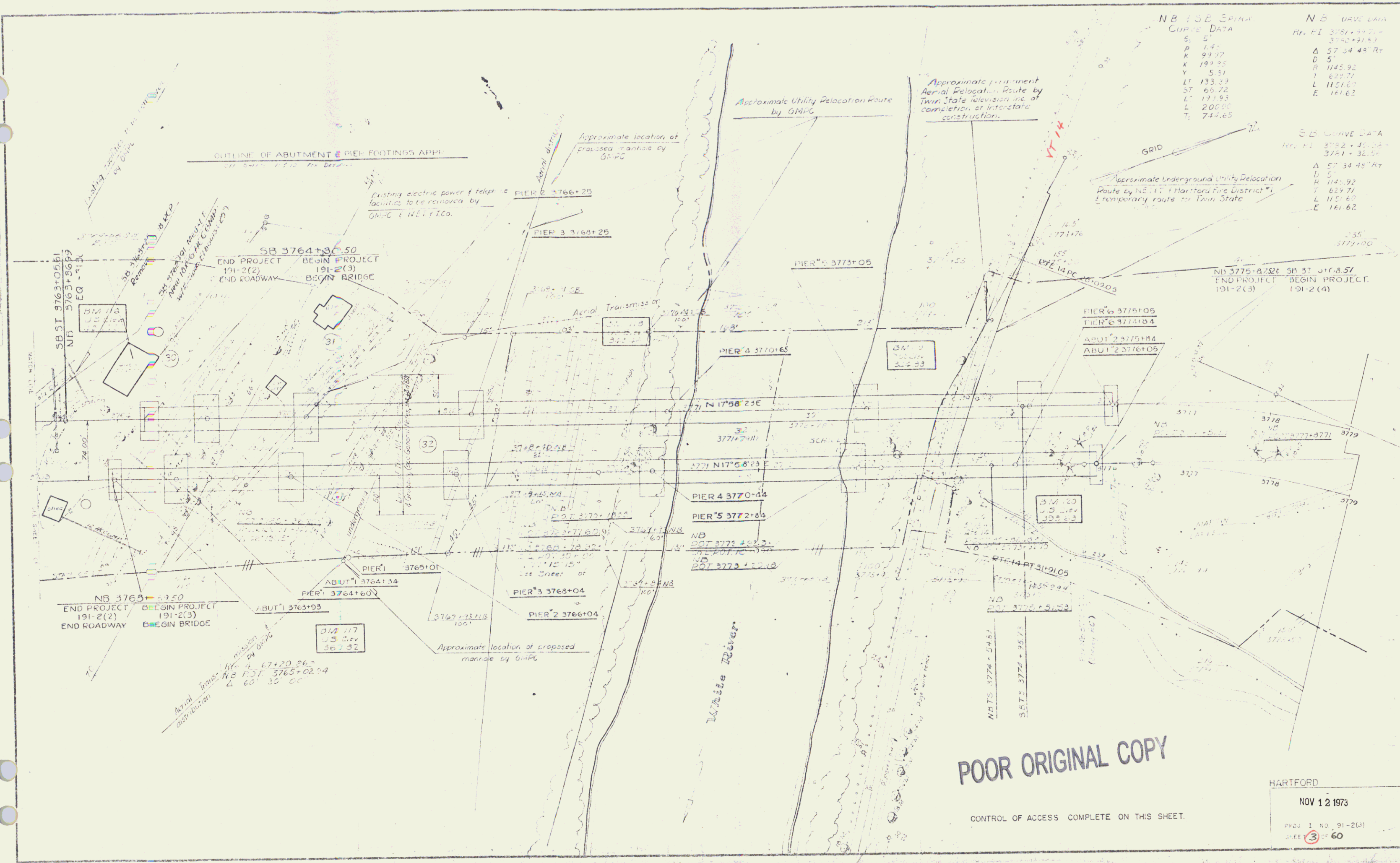
- 1.0201 - 1.0201
- 1.0202 - 1.0202
- 1.0203 - 1.0203
- 1.0204 - 1.0204
- 1.0205 - 1.0205
- 1.0206 - 1.0206
- 1.0207 - 1.0207
- 1.0208 - 1.0208
- 1.0209 - 1.0209
- 1.0210 - 1.0210
- 1.0211 - 1.0211
- 1.0212 - 1.0212
- 1.0213 - 1.0213
- 1.0214 - 1.0214
- 1.0215 - 1.0215
- 1.0216 - 1.0216
- 1.0217 - 1.0217
- 1.0218 - 1.0218
- 1.0219 - 1.0219
- 1.0220 - 1.0220
- 1.0221 - 1.0221
- 1.0222 - 1.0222
- 1.0223 - 1.0223
- 1.0224 - 1.0224
- 1.0225 - 1.0225
- 1.0226 - 1.0226
- 1.0227 - 1.0227
- 1.0228 - 1.0228
- 1.0229 - 1.0229
- 1.0230 - 1.0230
- 1.0231 - 1.0231
- 1.0232 - 1.0232
- 1.0233 - 1.0233
- 1.0234 - 1.0234
- 1.0235 - 1.0235
- 1.0236 - 1.0236
- 1.0237 - 1.0237
- 1.0238 - 1.0238
- 1.0239 - 1.0239
- 1.0240 - 1.0240
- 1.0241 - 1.0241
- 1.0242 - 1.0242
- 1.0243 - 1.0243
- 1.0244 - 1.0244
- 1.0245 - 1.0245
- 1.0246 - 1.0246
- 1.0247 - 1.0247
- 1.0248 - 1.0248
- 1.0249 - 1.0249
- 1.0250 - 1.0250



POOR ORIGINAL COPY

Handwritten signatures and notes at the bottom of the page.

NOV 12 1973



NB 3775+87.50 CURVE DATA		NB DRIVE DATA	
S	5'	Sta. PI	3751+32.50
R	147'	Sta. PI	3751+32.50
K	99.97	Δ	57°34'48" Rt
X	199.95	D	5'
Y	5.51	R	1145.92
LT	133.29	T	629.71
ST	66.72	L	1151.62
L	191.93	E	161.62
T	200.00		
TE	742.65		

SB CURVE DATA	
Sta. PI	3752+32.50
Sta. PI	3751+32.50
Δ	57°34'48" Rt
D	5'
R	1145.92
T	629.71
L	1151.62
E	161.62

POOR ORIGINAL COPY

CONTROL OF ACCESS COMPLETE ON THIS SHEET.

HARTFORD
 NOV 12 1973
 PROJ 1 NO. 91-2(3)
 SHEET 3 OF 60

SELECTIVE TRIMMING
NB 3776+75 - 3777+00
SB 3776+00 - 3777+25

DRILLING & BLASTING of SOLID ROCK
SUBGRADE
NB 3777+25 - 3779+00
SB 3776+75 - 3779+00

PROPERTY LINE FENCE w/
STEEL POSTS
NB 3776+95 - 3777+25 (2)
SB 3776+12 - 3777+00 (1)

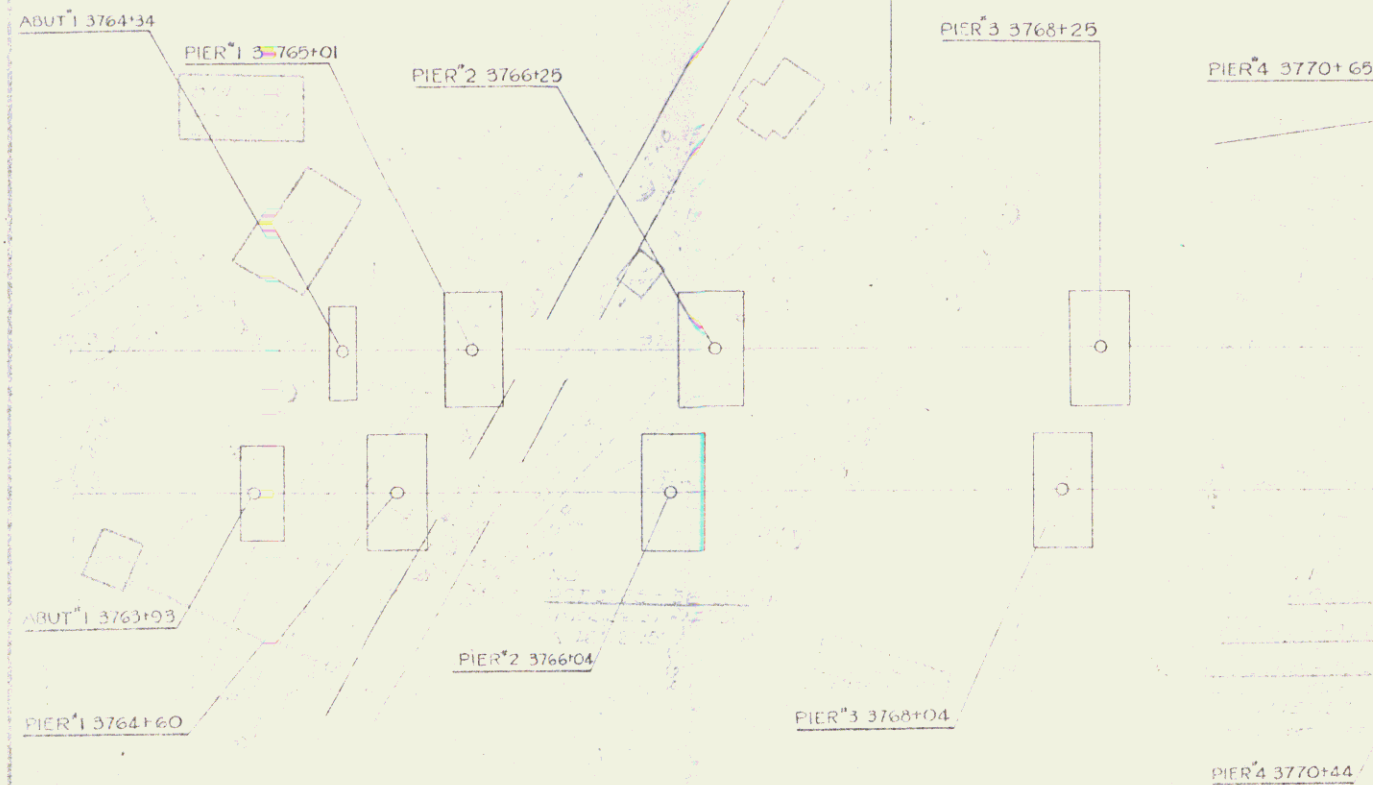
* BITUMINOUS CONCRETE CURB
NB 3776+00 - 3777+25 (2)

* STANDARD STEEL REINFORCED CONCRETE
NB 3776+00 - 3777+25 (2)

* THREE CABLE GUARD RAIL
w/ STEEL POSTS
NB 3776+00 - 3778+47 (2)
SB 3776+00 - 3777+46 (1)
SB 3776+42 - 3777+46 (1)

OUTLINE OF ABUTMENT FOOTINGS APPR

Truck 2^{1/2} Trax
PI 20 + 83.09
Δ 16° 10' 45" 27'

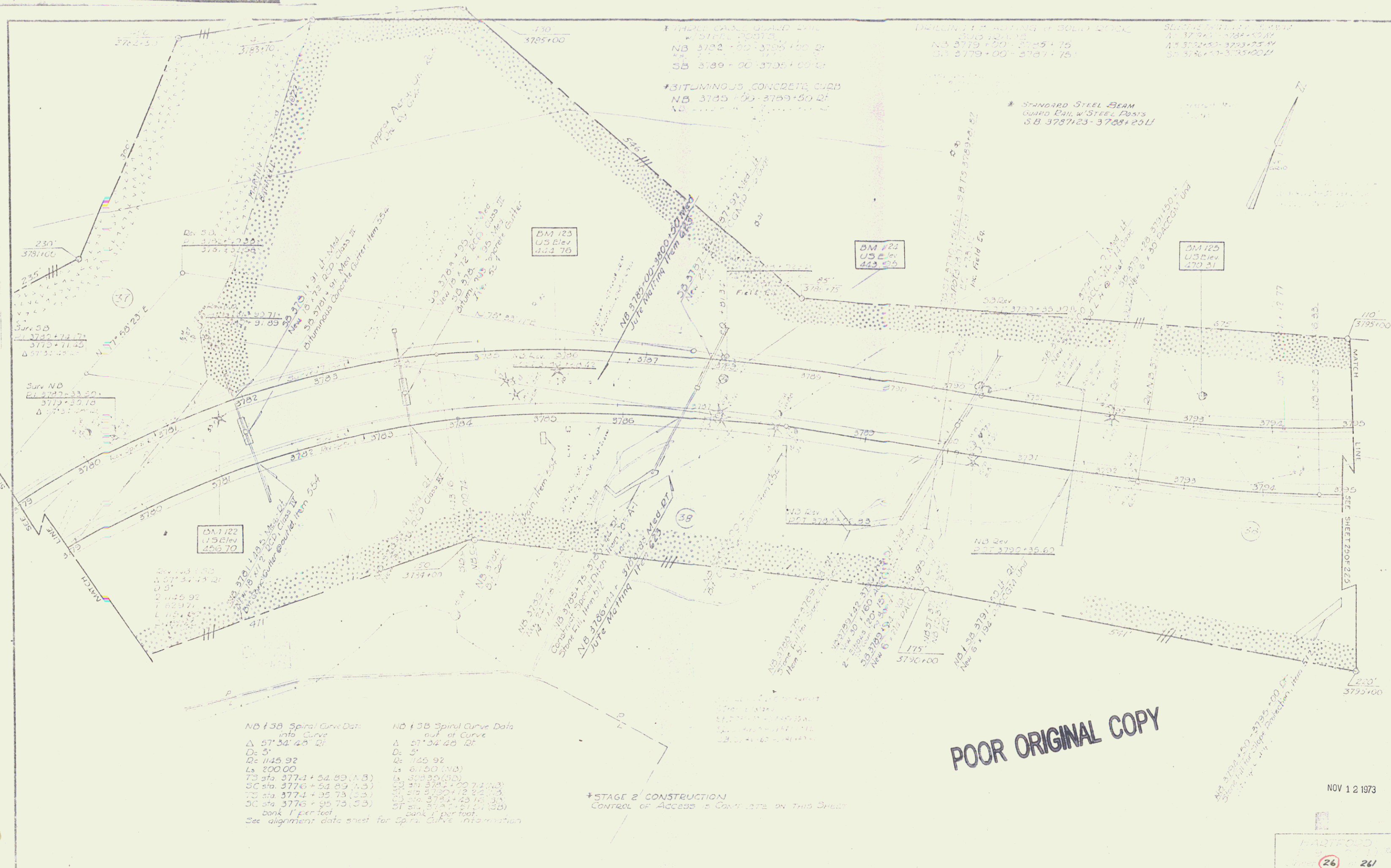


POOR ORIGINAL COPY

ROUTE 14
D 2430
R 2261.53
T 181.45
L 382.00
E 5434

NOV 12 1973

Sheet 23 of 26



NB f38 Spiral Curve Data		NB f38 Spiral Curve Data	
into Curve		out of Curve	
Δ 57° 34' 40" 2'		Δ 57° 34' 40" 2'	
Dc 5'		Dc 5'	
Rc 1145.92		Rc 1425.92	
Ls 200.00		Ls 611.50 (NB)	
TS sta 3777.1 + 54.85 (A.3)		TS sta 3782.50 (NB)	
SC sta 3776.1 + 51.85 (A.3)		SC sta 3781.4 + 48.85 (NB)	
TC sta 3774.1 + 45.75 (A.3)		TC sta 3779.4 + 42.75 (NB)	
CC sta 3773.1 + 45.75 (A.3)		CC sta 3778.4 + 42.75 (NB)	
bank 1' per foot		bank 1' per foot	

See alignment data sheet for spiral curve information

*STAGE 2 CONSTRUCTION
Control of Access to Curb area on this sheet

POOR ORIGINAL COPY

NOV 12 1973

HARTFORD
26 261

5

DRILLING & BLASTING OF SOLID
ROCK SUBGRADE ITEM
NB 3800+25 - 3811+00
SB 3789+75 - 3811+00

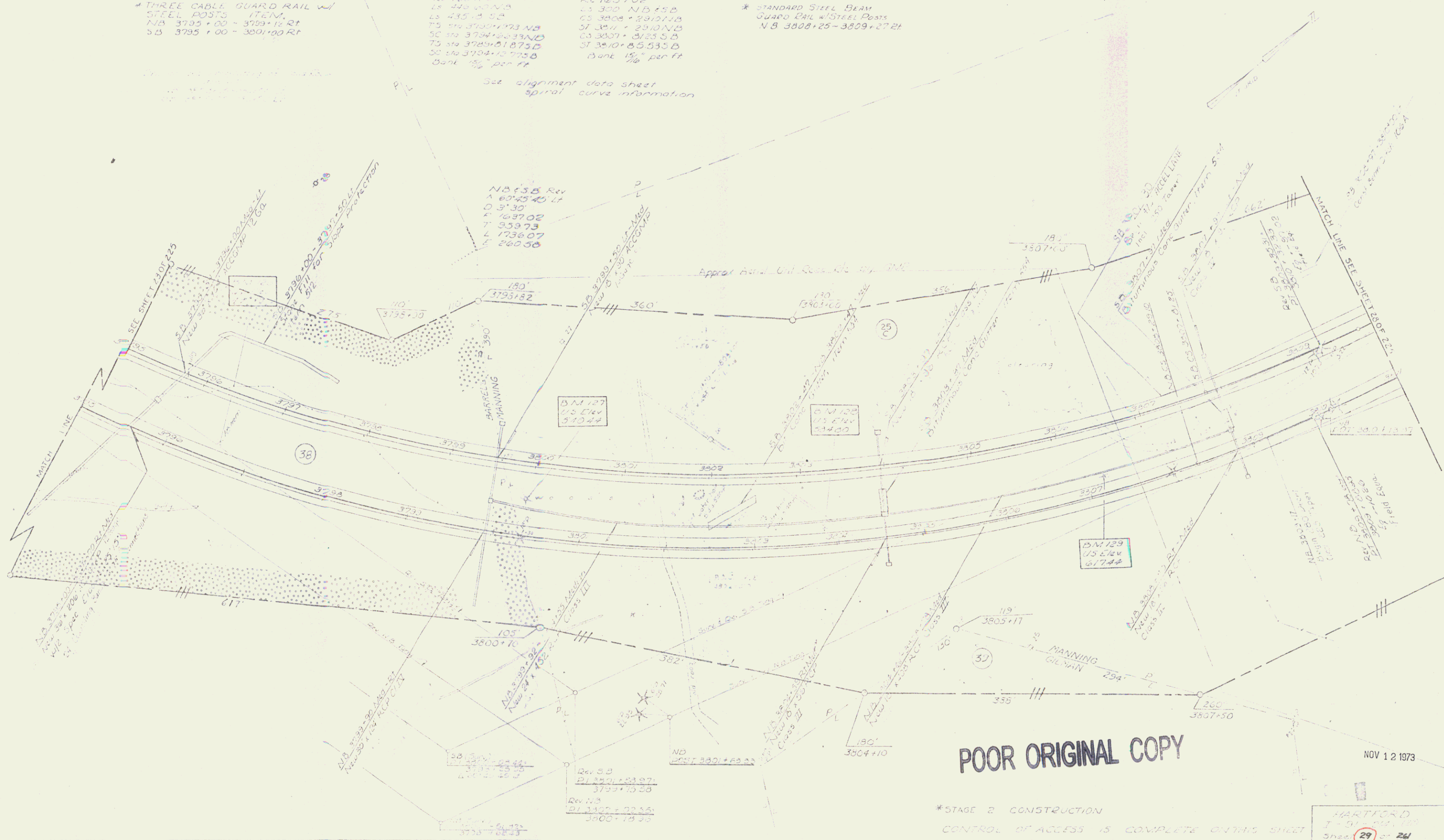
* THREE CABLE GUARD RAIL W/
STEEL POSTS ITEM
NB 3785+00 - 3789+15 Rt
SB 3785+00 - 3801+00 Rt

Spiral Curve Data
NB 350+00 curve
Δ 60° 45' 45" Lt
Dc 3' 30"
Rc 1637.02
Ls 445.00
Ts 374.37
Ss 374.37
Bank 1 1/2" per ft

NB 150 out of curve
Δ 60° 45' 45" Lt
Dc 3' 30"
Rc 1637.02
Ls 300.00
Ts 374.37
Ss 374.37
Bank 1 1/2" per ft

* STANDARD STEEL BEAM
GUARD RAIL W/STEEL POSTS
NB 3808+25 - 3809+27 Rt

See alignment data sheet
spiral curve information



POOR ORIGINAL COPY

*STAGE 2 CONSTRUCTION
CONTROL OF ACCESS IS COMPLETE ON THIS SHEET

HARTFORD
I-91
Sheet 29 of 24

NOV 12 1973

6

CAMP A
9+52+13 + 00' RT

PROPERTY LINE FENCE w/
STEEL POSTS
P.S. 35+4+00 - 3425 + 00' LT
35 36+4+00 - 3425 + 00' LT

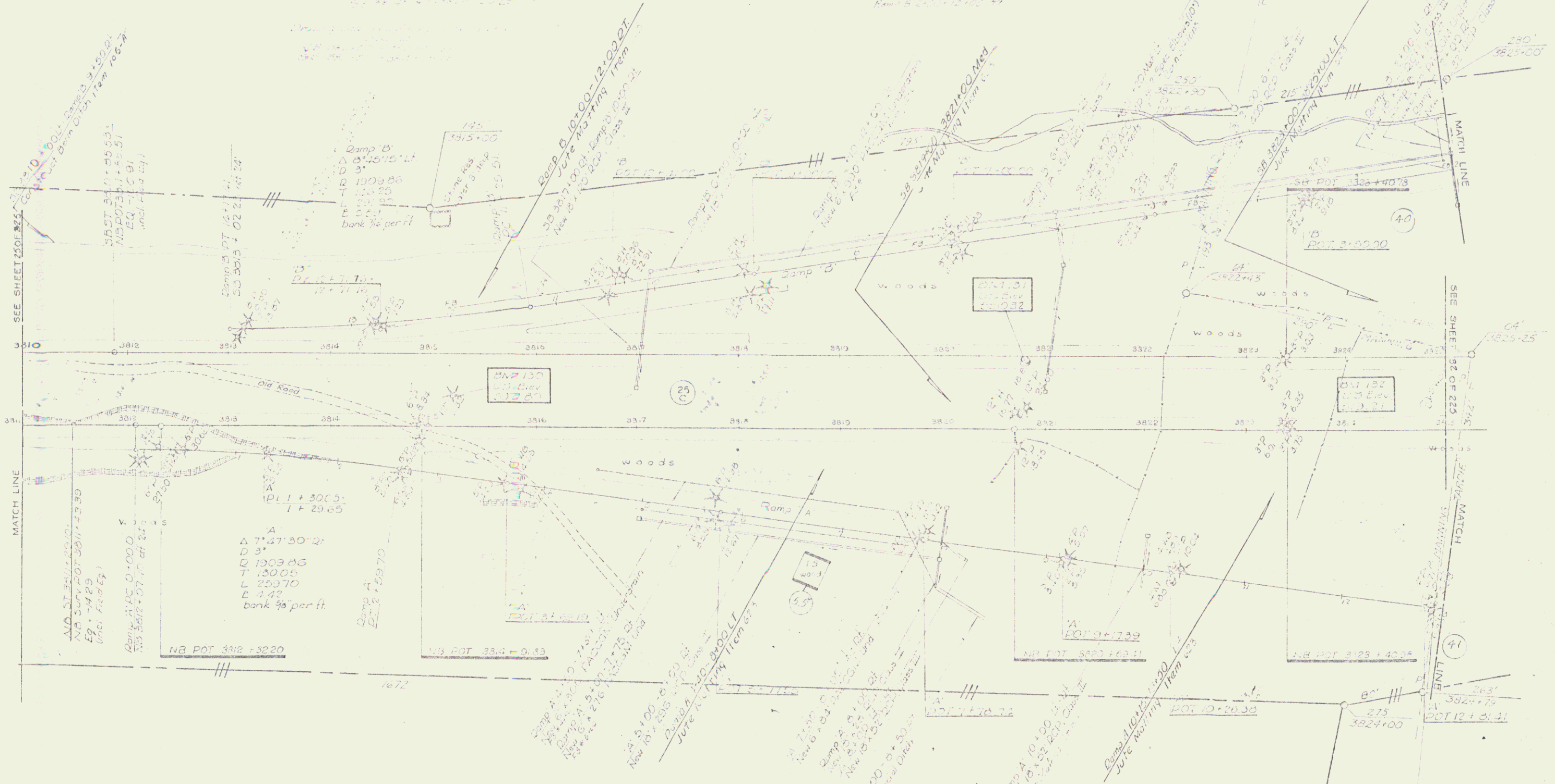
CAMP A
2+24 + 3+24 (existing)

THREE SABLE GUARD RAIL
w/ STEEL POSTS
Camp A 2+7 + 13+00 RT
NB 3429+61 - 3425+00 RT
NB 3431+42 - 3425+00 RT

DRILLING / BURNING / BLOWING
NO. 3417+00 - 3417+25
35 3411+00 - 3416+75
Camp A 0+100 - 5+00
Camp B 16+20 - 14+00

NO. 3415+75 RT, No. 1

215' 11' 10" FROM 12
215' 11' 10" FROM 12
215' 11' 10" FROM 12
215' 11' 10" FROM 12
215' 11' 10" FROM 12
215' 11' 10" FROM 12



POOR ORIGINAL COPY

NOV 12 1973

*STAGE 2 CONSTRUCTION
CONTROL OF ALL WORK COMPLETE BY THIS SHEET

HAD 1020
Sheet 31 of 26

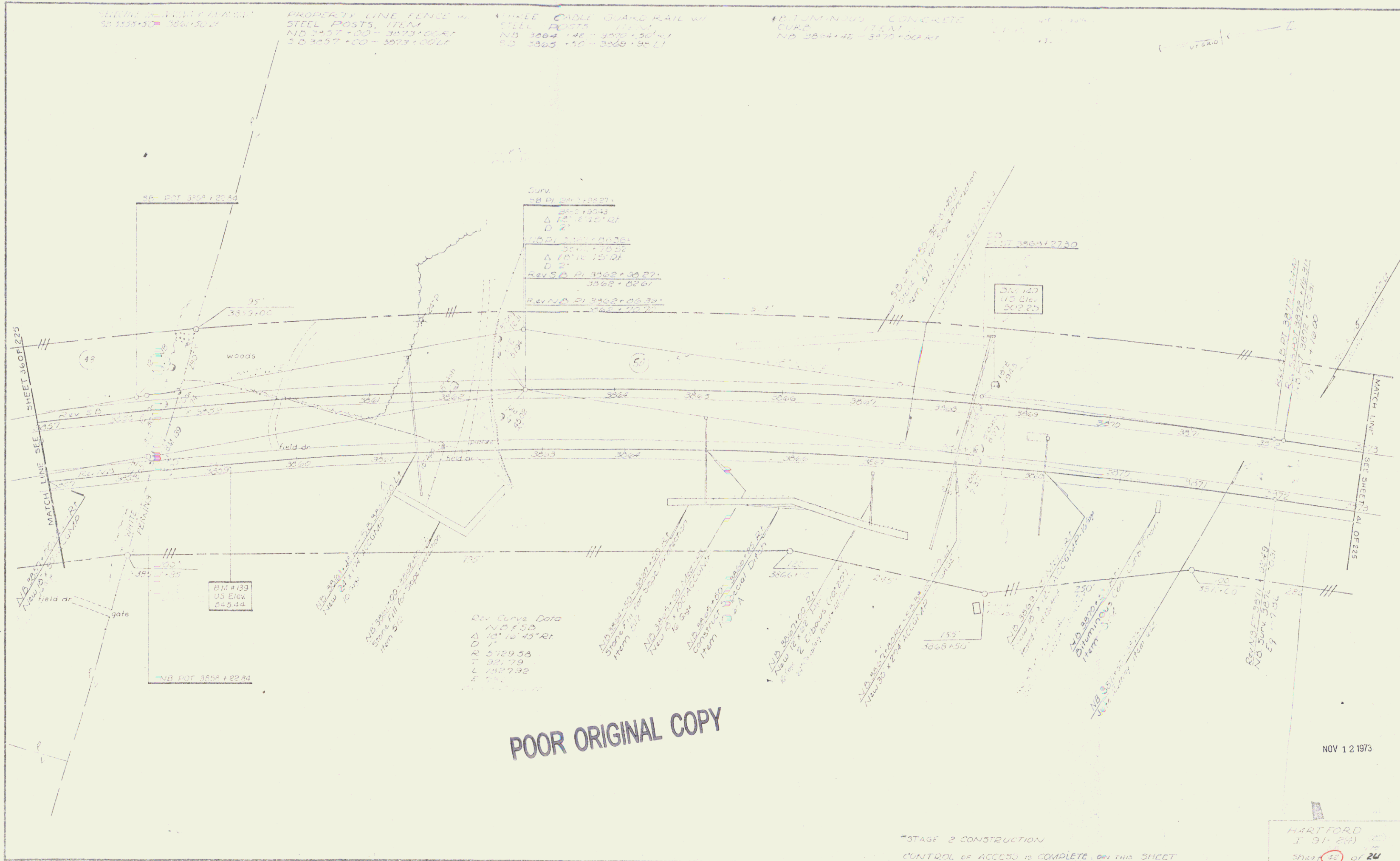
7

1.0' TUM-IN CURB
CURB ITEM
NO. 3084+40 - 3070+00 RT

PROPERTY LINE FENCE W/
STEEL POSTS, ITEM
NO. 3057+00 - 3073+00 LT

3.0' WOODEN GUARD RAIL W/
STEEL POSTS, ITEM
NO. 3064+40 - 3070+00 RT
NO. 3085+40 - 3069+95 LT

1.0' TUM-IN CURB
CURB ITEM
NO. 3084+40 - 3070+00 RT



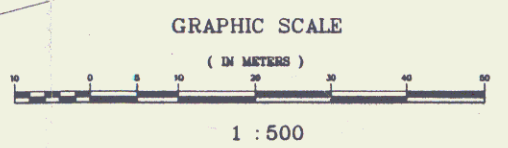
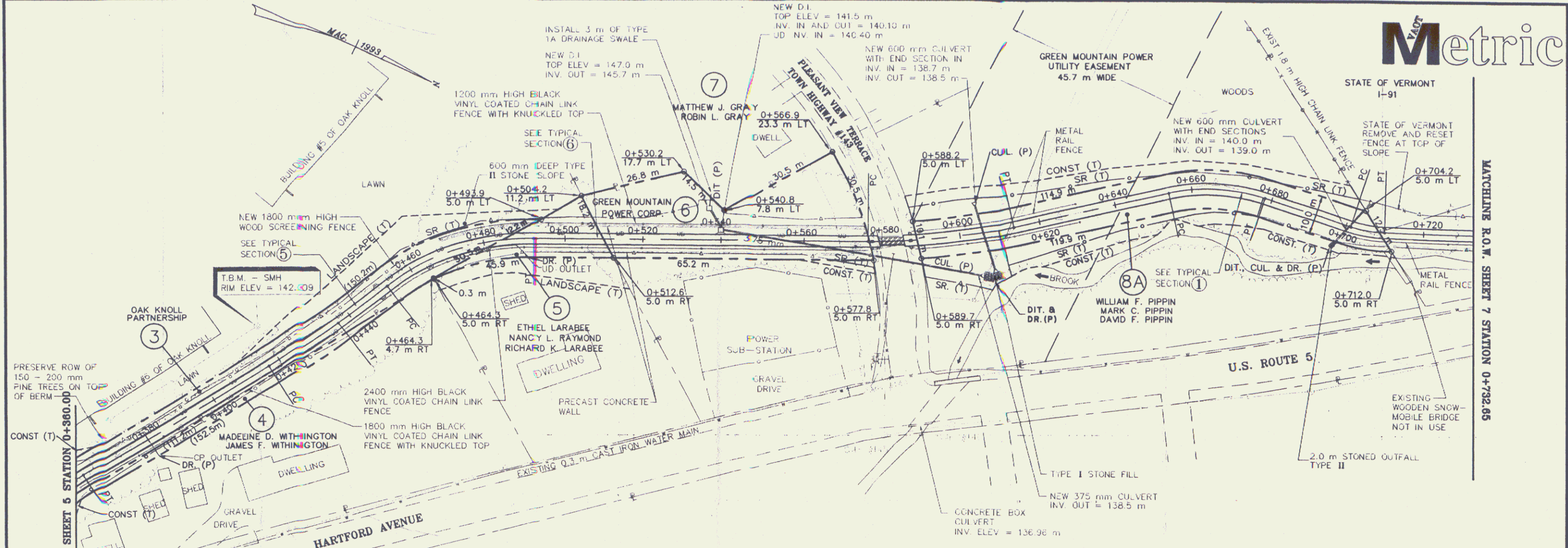
POOR ORIGINAL COPY

Rev Curve Data
NO. 3075
Δ 15° 15' 45" RT
D 21
R 5729.55
T 301.79
L 2427.92
E 11.11

NOV 12 1973

*STAGE 2 CONSTRUCTION
CONTROL OF ACCESS IS COMPLETE ON THIS SHEET

HARTFORD
I 91-24
Sheets 40 of 24



STATION	TO	STATION	METERS
0+360.0	LT 2.4	0+460.0	100.0
0+470.0	LT.	0+570.0	129.9

STATION	TO	STATION	METERS
0+360.0	RT.	0+460.0	100.0
0+470.0	LT.	0+570.0	129.9

STATION	TO	STATION	METERS
0+360.0	RT.	0+465.0	105.0
0+465.0	RT.	0+576.0	111.0
0+470.0	LT.	0+575.5	105.5

STATION	TO	STATION	METERS
0+470.0	LT.	0+575.5	105.5
0+470.0	LT.	0+575.5	105.5

These plans were used for a response for a response agreement; check for revised plans.

SYMBOL	DESCRIPTION
---	BOUNDARY LINE
---	TRANSPORTATION PATH
---	SURVEY CONTROL LINE
---	EXISTING DRAINAGE SWALE
---	EDGE OF WOODS
---	NEW FENCE
---	EXISTING WATER LINE & GATE VALVE
---	EXISTING SEWER LINE & MANHOLE
---	IRON PIPE FOUND
---	EDGE OF EXISTING PAVEMENT
---	PRECAST CONCRETE WALL
---	NEW CATCH BASIN & STORM LINE
---	EXISTING STORM LINE, MH & CB
---	VEHICLE BARRIER POST
---	EXISTING UTILITY POLE & OVERHEAD WIRES
---	EXISTING GUARD RAIL
---	NEW STEEL BEAM GUARD RAIL
---	NEW WOOD SCREENING FENCE
---	PRECAST CONCRETE WALL
---	SLOPE RIGHTS AND CLEARING LIMITS (FILL)
---	SLOPE RIGHTS AND CLEARING LIMITS (CUT)
---	SIDELINE OF EASEMENT
---	R.O.W. TAKING LINE
---	UNDERDRAIN WITH FLUSHING BASIN

STATION	TO	STATION	METERS
0+703.7	LT.	0+722.2	17.4

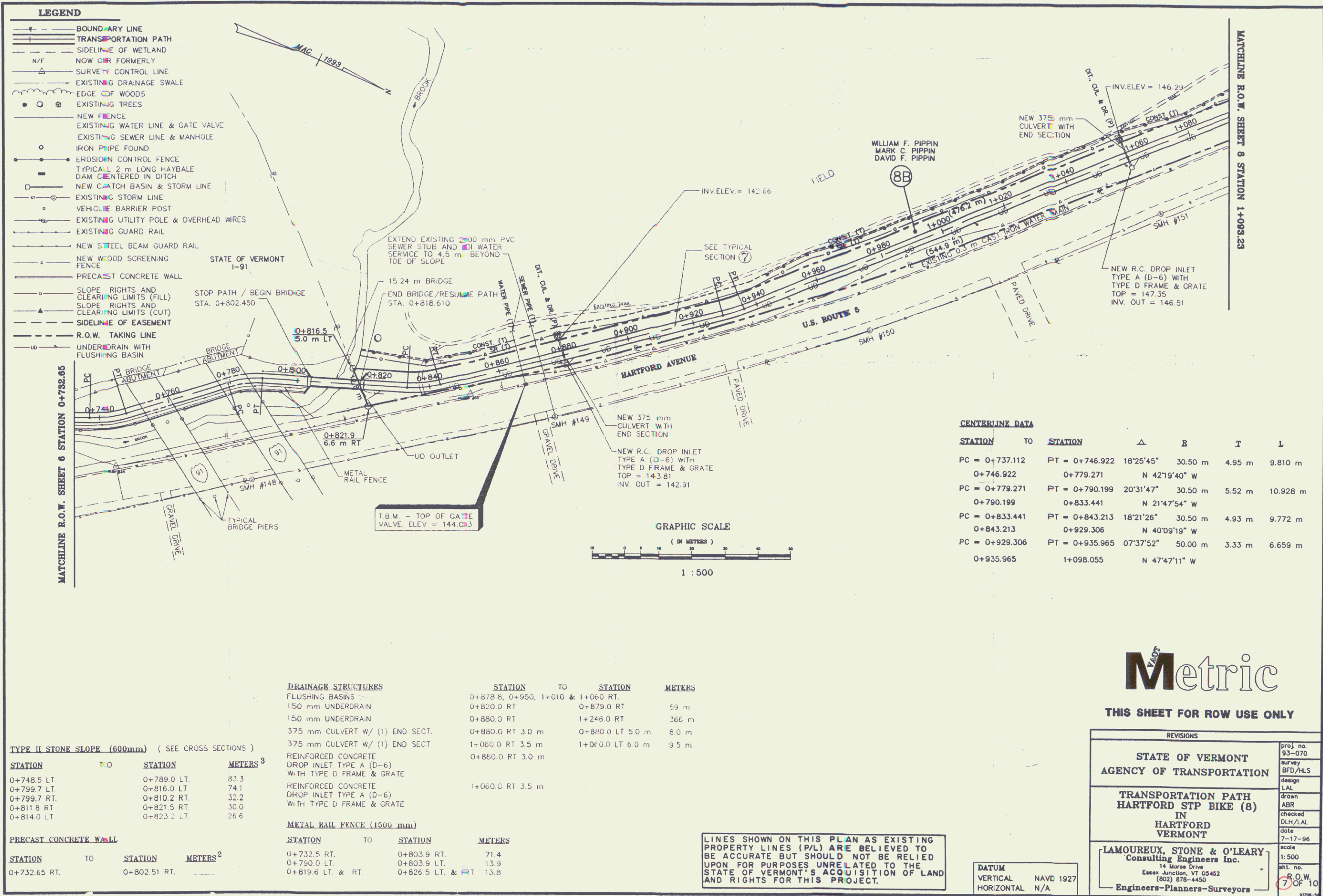
THIS SHEET FOR ROW USE ONLY

REVISIONS	
1	STATE OF VERMONT AGENCY OF TRANSPORTATION
2	TRANSPORTATION PATH HARTFORD STP BIKE (8) IN HARTFORD VERMONT
3	LAMOUREUX, STONE & O'LEARY Consulting Engineers Inc.

LINES SHOWN ON THIS PLAN AS EXISTING PROPERTY LINES (P/L) ARE BELIEVED TO BE ACCURATE BUT SHOULD NOT BE RELIED UPON FOR PURPOSES UNRELATED TO THE STATE OF VERMONT'S ACQUISITION OF LAND AND RIGHTS FOR THIS PROJECT.

DATUM	VERTICAL	NAVD 1927	HORIZONTAL	N/A
-------	----------	-----------	------------	-----

proj. no.	93-070
survey	BFD/HLS
design	LAL
drawn	ASB
checked	LAL
date	7-17-96
scale	1:500
sheet no.	6 OF 10
R.O.W.	6 OF 10



LEGEND

- BOUNDARY LINE
- TRANSPORTATION PATH
- SIDELINE OF WETLAND
- N/F NOW OR FORMERLY
- SURVEY CONTROL LINE
- EXISTING DRAINAGE SWALE
- EDGE OF WOODS
- ○ ○ EXISTING TREES
- NEW FENCE
- EXISTING WATER LINE & GATE VALVE
- EXISTING SEWER LINE & MANHOLE
- IRON PIPE FOUND
- EROSION CONTROL FENCE
- TYPICAL 2 m LONG HAYBALE DAM CENTERED IN DITCH
- NEW CATCH BASIN & STORM LINE
- EXISTING STORM LINE
- VEHICLE BARRIER POST
- EXISTING UTILITY POLE & OVERHEAD WIRES
- EXISTING GUARD RAIL
- NEW STEEL BEAM GUARD RAIL
- NEW WOOD SCREENING FENCE
- PRECAST CONCRETE WALL
- SLOPE RIGHTS AND CLEARING LIMITS (FILL)
- SLOPE RIGHTS AND CLEARING LIMITS (CUT)
- SIDELINE OF EASEMENT
- R.O.W. TAKING LINE
- UNDERDRAIN WITH FLUSHING BASIN

CENTERLINE DATA

STATION	TO	STATION	Δ	B	T	L
PC = 0+737.112		PT = 0+746.922	18°25'45"	30.50 m	4.95 m	9.810 m
		0+779.271	N 42°19'40" W			
PC = 0+779.271		PT = 0+790.199	20°31'47"	30.50 m	5.52 m	10.928 m
		0+833.441	N 21°47'54" W			
PC = 0+833.441		PT = 0+843.213	18°21'26"	30.50 m	4.93 m	9.772 m
		0+843.213	N 40°09'19" W			
PC = 0+843.213		PT = 0+929.306	07°37'52"	50.00 m	3.33 m	6.659 m
		0+929.306	N 47°47'11" W			

DRAINAGE STRUCTURES

STATION	TO	STATION	METERS
FLUSHING BASINS	0+878.8, 0+950, 1+010 & 1+060	RT.	
150 mm UNDERDRAIN	0+820.0	RT.	59 m
150 mm UNDERDRAIN	0+880.0	RT.	366 m
375 mm CULVERT W/ (1) END SECT.	0+880.0	RT. 3.0 m	8.0 m
375 mm CULVERT W/ (1) END SECT.	1+060.0	RT. 3.5 m	9.5 m
375 mm CULVERT W/ (1) END SECT.	1+060.0	LT. 6.0 m	9.5 m
REINFORCED CONCRETE DROP INLET TYPE A (D-6) WITH TYPE D FRAME & GRATE	0+880.0	RT. 3.0 m	
REINFORCED CONCRETE DROP INLET TYPE A (D-6) WITH TYPE D FRAME & GRATE	1+060.0	RT. 3.5 m	

TYPE II STONE SLOPE (600mm) (SEE CROSS SECTIONS)

STATION	TO	STATION	METERS ³
0+748.5	LT.	0+789.0	83.3
0+799.7	LT.	0+816.0	74.1
0+799.7	RT.	0+810.2	32.2
0+811.8	RT.	0+821.5	30.0
0+814.0	LT.	0+823.2	26.6

PRECAST CONCRETE WALL

STATION	TO	STATION	METERS ²	
0+732.65	RT.	0+802.51	RT.	

METAL RAIL FENCE (1500 mm)

STATION	TO	STATION	METERS	
0+732.5	RT.	0+803.9	RT.	71.4
0+790.0	LT.	0+803.9	LT.	13.9
0+819.6	LT. & RT.	0+826.5	LT. & RT.	13.8

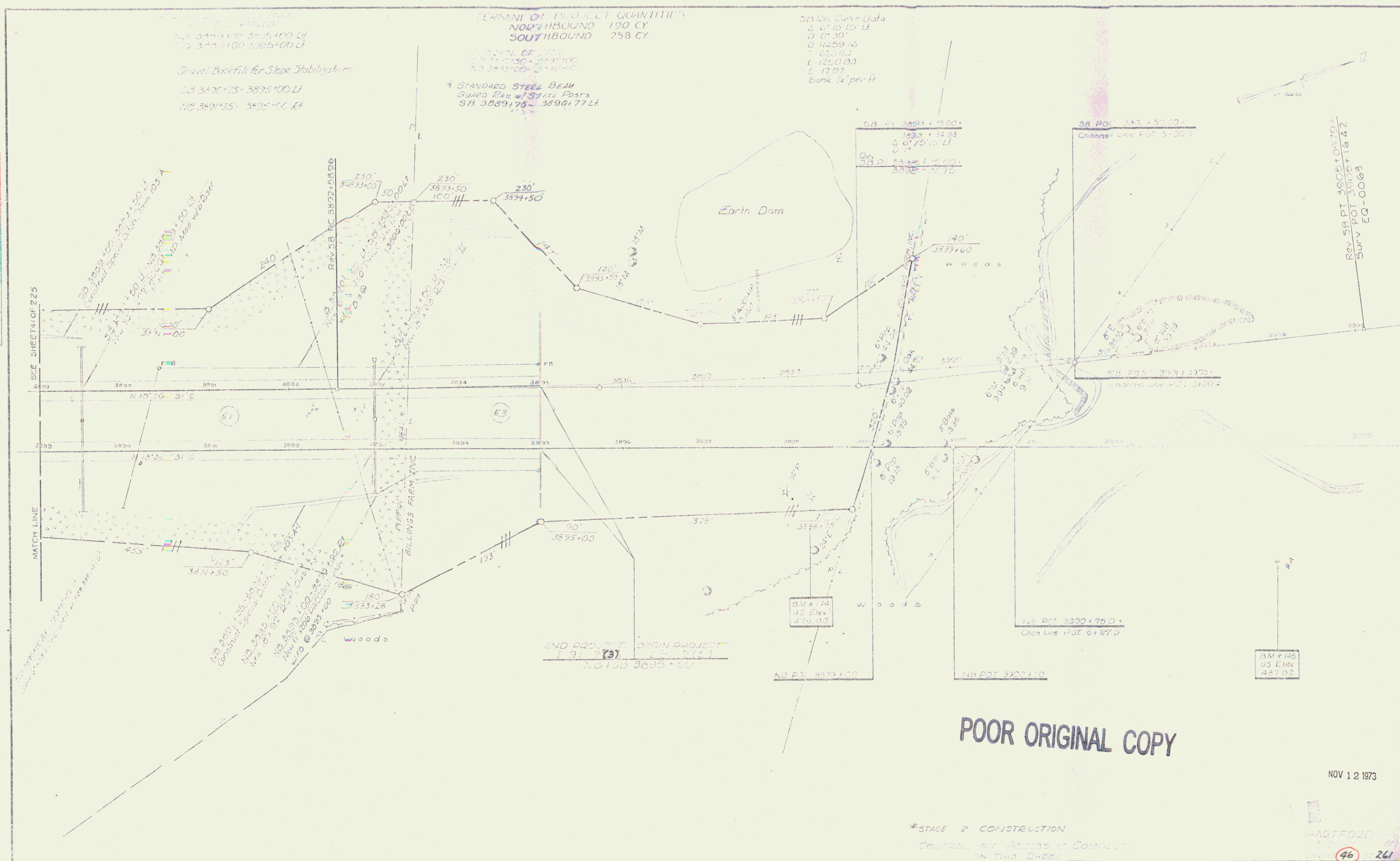
LINES SHOWN ON THIS PLAN AS EXISTING PROPERTY LINES (P/L) ARE BELIEVED TO BE ACCURATE BUT SHOULD NOT BE RELIED UPON FOR PURPOSES UNRELATED TO THE STATE OF VERMONT'S ACQUISITION OF LAND AND RIGHTS FOR THIS PROJECT.

DATUM
VERTICAL NAVD 1927
HORIZONTAL N/A

Metric

THIS SHEET FOR ROW USE ONLY

REVISIONS	
STATE OF VERMONT AGENCY OF TRANSPORTATION	proj. no. 93-070 survey BFD/HLS design LAL drawn ABR checked DLH/LAL date 7-17-96 scale 1:500 SHT. no. 7 OF 10 R.O.W. 10
TRANSPORTATION PATH HARTFORD STP BIKE (8) IN HARTFORD VERMONT	
LAMOUREUX, STONE & O'LEARY Consulting Engineers Inc. 14 Morse Drive Essex Junction, VT 05452 (802) 878-4450 Engineers-Planners-Surveyors	



POOR ORIGINAL COPY

NOV 12 1973

*STAGE 2 CONSTRUCTION
CONTROL OF ACCESS IS COMPLETE
ON THIS SHEET

HARTFORD
46 261