

STATE OF VERMONT
DEPARTMENT OF HIGHWAYS

PROPOSED IMPROVEMENT

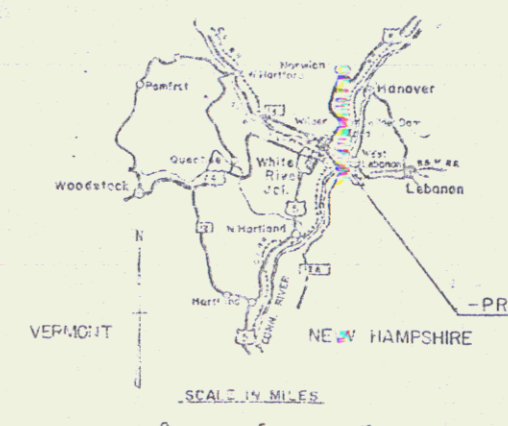
INTERSTATE PROJECT
TOWN OF HARTFORD
COUNTY OF WINDSOR
INTERSTATE ROUTE 91
BELLOWS FALLS - BRADFORD ROAD

Project # 191-2 (a) STAGE I

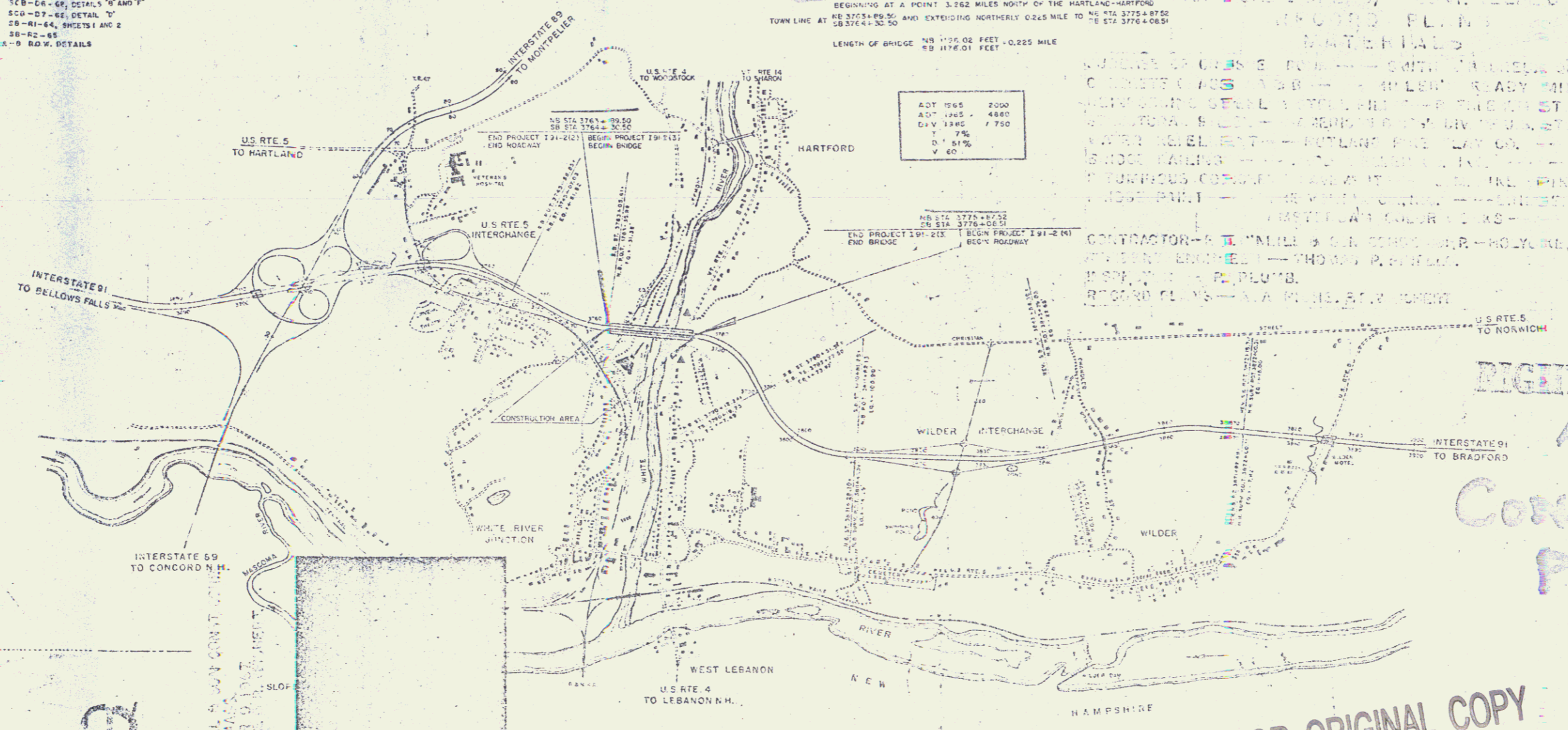
BEGINNING AT A POINT 3.362 MILES NORTH OF THE HARTLAND-HARTFORD
TOWN LINE AT NB 3775+80.50 AND EXTENDING NORTHERLY 0.245 MILE TO NB STA 3775+87.50
SB 3764+30.50

LENGTH OF BRIDGE NB 1176.00 FEET - 0.225 MILE
SB 1176.00 FEET - 0.225 MILE

ADT 1965	2000
ADT 1965	4800
Div 1965	7750
D	7%
V	60'



- 1 SHEET NO. 1 TITLE PAGE
- 2 BIDDING QUANTITY SHEET
- 3-5 PLAN AND PROFILE SHEETS
- 6 E-1 MATERIALS, SIGNS AND LIGHTS (BRIDGE)
- 7 E-2 CONSTRUCTION IDENTIFICATION SIGNS
- 8 J-1 MARKERS
- 9 J-4 FIELD OFFICE
- 10 PLAN AND ELEVATION - (1" = 40' SCALE)
- 11-15 PLAN AND ELEVATION - (1" = 20' SCALE)
- 16 GENERAL NOTES
- 17 PRELIMINARY PROVISION SHEET
- 18-19 EARTHWORK SHEETS
- 20 FRAMING PLAN, DETAILS, TYPICAL CROSS-SECTION
- 21 FRAMING PLAN, DETAILS
- 22 WARDER DETAILS
- 23 MOMENT, DEAD LOAD DEFLECTION, SHEARS, REACTIONS
- 24 TYPICAL EXPANSION DEVICE
- 25 BELLEVUE
- 26 BEARING DEVICES
- 27 ADJUSTMENT NO. 1 NB
- 28 ADJUSTMENT NO. 1 SB
- 29 ADJUSTMENT NO. 2 NB AND SB
- 30 PIER NO. 1 NB AND SB
- 31 PIER NO. 4 NB AND SB
- 32 PIER NO. 5 NB AND SB
- 33 PIER NO. 6 NB AND SB
- 34 PIER NO. 8 NB AND SB
- 35 PIER NO. 9 NB AND SB
- 36 APPROACH SLABS NO. 1 AND NO. 2 NB AND SB
- 37-40 REINFORCING STEEL DETAIL SHEETS
- 41-42 CHANNEL SECTIONS
- 43-44 ROADWAY CROSS SECTIONS
- 45-46 TCB - C4-65, DETAILS "A" AND "B"
- 47 SCD - D7-65, DETAIL "A"
- 48-51-64, SHEETS 1 AND 2
- 52-53-65
- 54-55-66
- 56-57-67
- 58-59-68
- 60-61-62
- 63-64-65
- 66-67-68
- 69-70-71
- 72-73-74
- 75-76-77
- 78-79-80
- 81-82-83
- 84-85-86
- 87-88-89
- 90-91-92
- 93-94-95
- 96-97-98
- 99-100-101
- 102-103-104
- 105-106-107
- 108-109-110
- 111-112-113
- 114-115-116
- 117-118-119
- 120-121-122
- 123-124-125
- 126-127-128
- 129-130-131
- 132-133-134
- 135-136-137
- 138-139-140
- 141-142-143
- 144-145-146
- 147-148-149
- 150-151-152
- 153-154-155
- 156-157-158
- 159-160-161
- 162-163-164
- 165-166-167
- 168-169-170
- 171-172-173
- 174-175-176
- 177-178-179
- 180-181-182
- 183-184-185
- 186-187-188
- 189-190-191
- 192-193-194
- 195-196-197
- 198-199-200



DESIGNED BY: [Name]
CHECKED BY: [Name]
DATE: [Date]

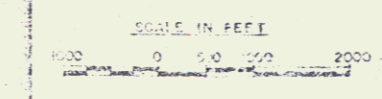
CONTRACTOR: [Name]
SUPERVISOR: [Name]

APPROVED BY: [Name]
DATE: [Date]

RIGHT-OF-WAY
AND
CONSTRUCTION
PLANS

POOR ORIGINAL COPY

162



11/1/64 11/1/64 11/1/64 11/1/64 11/1/64 11/1/64 11/1/64 11/1/64 11/1/64 11/1/64

NOV 12 1973

1 2

STATE OF VERMONT
DEPARTMENT OF HIGHWAYS
RIGHT-OF-WAY PLANS
(DETAIL SHEET)

TABLE OF PROJECT PROPERTY ACQUISITION

PARCEL NO.	GRANTOR	SHEET NO.	BEGINNING STATION	ENDING STATION	TAKING	REM.	RIGHTS	TITLE TAKEN	DATE	TOWN OR CITY RECORDED	BK.	PG.	REMARKS
1	THE MILLER AUTOMOBILE CO.		1242 (US5)	1242 (US5)	27.24	450.97							Limited Access
2			1242 (US5)	1242 (US5)	27.24								Limited Access
3			2491 (RT)	3-01 RT	1500.57								Limited Access
4	L.A. TRIPLE INC.		37-35 E	38+85 E	0.24								Limited Access
5	FRANK W. MITCHELL D. KELLY		37-35 E	37-35 E	0.1A								Limited Access
6	FRANK W. MITCHELL D. KELLY		37-35 E	37-35 E	0.2A								Limited Access
7	FRANK W. MITCHELL D. KELLY		37-35 E	37-35 E	0.1A								Limited Access
8	FRANK W. MITCHELL D. KELLY		37-35 E	37-35 E	0.2A								Limited Access
9	FRANK W. MITCHELL D. KELLY		37-35 E	37-35 E	0.1A								Limited Access
10	FRANK W. MITCHELL D. KELLY		37-35 E	37-35 E	0.2A								Limited Access
11	FRANK W. MITCHELL D. KELLY		37-35 E	37-35 E	0.1A								Limited Access
12	FRANK W. MITCHELL D. KELLY		37-35 E	37-35 E	0.2A								Limited Access
13	FRANK W. MITCHELL D. KELLY		37-35 E	37-35 E	0.1A								Limited Access
14	FRANK W. MITCHELL D. KELLY		37-35 E	37-35 E	0.2A								Limited Access
15	FRANK W. MITCHELL D. KELLY		37-35 E	37-35 E	0.1A								Limited Access
16	FRANK W. MITCHELL D. KELLY		37-35 E	37-35 E	0.2A								Limited Access
17	FRANK W. MITCHELL D. KELLY		37-35 E	37-35 E	0.1A								Limited Access
18	FRANK W. MITCHELL D. KELLY		37-35 E	37-35 E	0.2A								Limited Access
19	FRANK W. MITCHELL D. KELLY		37-35 E	37-35 E	0.1A								Limited Access
20	FRANK W. MITCHELL D. KELLY		37-35 E	37-35 E	0.2A								Limited Access
21	FRANK W. MITCHELL D. KELLY		37-35 E	37-35 E	0.1A								Limited Access
22	FRANK W. MITCHELL D. KELLY		37-35 E	37-35 E	0.2A								Limited Access
23	FRANK W. MITCHELL D. KELLY		37-35 E	37-35 E	0.1A								Limited Access
24	FRANK W. MITCHELL D. KELLY		37-35 E	37-35 E	0.2A								Limited Access
25	FRANK W. MITCHELL D. KELLY		37-35 E	37-35 E	0.1A								Limited Access
26	FRANK W. MITCHELL D. KELLY		37-35 E	37-35 E	0.2A								Limited Access
27	FRANK W. MITCHELL D. KELLY		37-35 E	37-35 E	0.1A								Limited Access
28	FRANK W. MITCHELL D. KELLY		37-35 E	37-35 E	0.2A								Limited Access
29	FRANK W. MITCHELL D. KELLY		37-35 E	37-35 E	0.1A								Limited Access
30	FRANK W. MITCHELL D. KELLY		37-35 E	37-35 E	0.2A								Limited Access
31	FRANK W. MITCHELL D. KELLY		37-35 E	37-35 E	0.1A								Limited Access
32	FRANK W. MITCHELL D. KELLY		37-35 E	37-35 E	0.2A								Limited Access
33	FRANK W. MITCHELL D. KELLY		37-35 E	37-35 E	0.1A								Limited Access
34	FRANK W. MITCHELL D. KELLY		37-35 E	37-35 E	0.2A								Limited Access
35	FRANK W. MITCHELL D. KELLY		37-35 E	37-35 E	0.1A								Limited Access
36	FRANK W. MITCHELL D. KELLY		37-35 E	37-35 E	0.2A								Limited Access
37	FRANK W. MITCHELL D. KELLY		37-35 E	37-35 E	0.1A								Limited Access
38	FRANK W. MITCHELL D. KELLY		37-35 E	37-35 E	0.2A								Limited Access
39	FRANK W. MITCHELL D. KELLY		37-35 E	37-35 E	0.1A								Limited Access
40	FRANK W. MITCHELL D. KELLY		37-35 E	37-35 E	0.2A								Limited Access
41	FRANK W. MITCHELL D. KELLY		37-35 E	37-35 E	0.1A								Limited Access
42	FRANK W. MITCHELL D. KELLY		37-35 E	37-35 E	0.2A								Limited Access
43	FRANK W. MITCHELL D. KELLY		37-35 E	37-35 E	0.1A								Limited Access
44	FRANK W. MITCHELL D. KELLY		37-35 E	37-35 E	0.2A								Limited Access
45	FRANK W. MITCHELL D. KELLY		37-35 E	37-35 E	0.1A								Limited Access
46	FRANK W. MITCHELL D. KELLY		37-35 E	37-35 E	0.2A								Limited Access
47	FRANK W. MITCHELL D. KELLY		37-35 E	37-35 E	0.1A								Limited Access
48	FRANK W. MITCHELL D. KELLY		37-35 E	37-35 E	0.2A								Limited Access
49	FRANK W. MITCHELL D. KELLY		37-35 E	37-35 E	0.1A								Limited Access
50	FRANK W. MITCHELL D. KELLY		37-35 E	37-35 E	0.2A								Limited Access
51	FRANK W. MITCHELL D. KELLY		37-35 E	37-35 E	0.1A								Limited Access
52	FRANK W. MITCHELL D. KELLY		37-35 E	37-35 E	0.2A								Limited Access
53	FRANK W. MITCHELL D. KELLY		37-35 E	37-35 E	0.1A								Limited Access
54	FRANK W. MITCHELL D. KELLY		37-35 E	37-35 E	0.2A								Limited Access
55	FRANK W. MITCHELL D. KELLY		37-35 E	37-35 E	0.1A								Limited Access
56	FRANK W. MITCHELL D. KELLY		37-35 E	37-35 E	0.2A								Limited Access
57	FRANK W. MITCHELL D. KELLY		37-35 E	37-35 E	0.1A								Limited Access
58	FRANK W. MITCHELL D. KELLY		37-35 E	37-35 E	0.2A								Limited Access
59	FRANK W. MITCHELL D. KELLY		37-35 E	37-35 E	0.1A								Limited Access
60	FRANK W. MITCHELL D. KELLY		37-35 E	37-35 E	0.2A								Limited Access
61	FRANK W. MITCHELL D. KELLY		37-35 E	37-35 E	0.1A								Limited Access
62	FRANK W. MITCHELL D. KELLY		37-35 E	37-35 E	0.2A								Limited Access
63	FRANK W. MITCHELL D. KELLY		37-35 E	37-35 E	0.1A								Limited Access
64	FRANK W. MITCHELL D. KELLY		37-35 E	37-35 E	0.2A								Limited Access
65	FRANK W. MITCHELL D. KELLY		37-35 E	37-35 E	0.1A								Limited Access
66	FRANK W. MITCHELL D. KELLY		37-35 E	37-35 E	0.2A								Limited Access
67	FRANK W. MITCHELL D. KELLY		37-35 E	37-35 E	0.1A								Limited Access
68	FRANK W. MITCHELL D. KELLY		37-35 E	37-35 E	0.2A								Limited Access
69	FRANK W. MITCHELL D. KELLY		37-35 E	37-35 E	0.1A								Limited Access
70	FRANK W. MITCHELL D. KELLY		37-35 E	37-35 E	0.2A								Limited Access
71	FRANK W. MITCHELL D. KELLY		37-35 E	37-35 E	0.1A								Limited Access
72	FRANK W. MITCHELL D. KELLY		37-35 E	37-35 E	0.2A								Limited Access
73	FRANK W. MITCHELL D. KELLY		37-35 E	37-35 E	0.1A								Limited Access
74	FRANK W. MITCHELL D. KELLY		37-35 E	37-35 E	0.2A								Limited Access
75	FRANK W. MITCHELL D. KELLY		37-35 E	37-35 E	0.1A								Limited Access
76	FRANK W. MITCHELL D. KELLY		37-35 E	37-35 E	0.2A								Limited Access
77	FRANK W. MITCHELL D. KELLY		37-35 E	37-35 E	0.1A								Limited Access
78	FRANK W. MITCHELL D. KELLY		37-35 E	37-35 E	0.2A								Limited Access
79	FRANK W. MITCHELL D. KELLY		37-35 E	37-35 E	0.1A								Limited Access
80	FRANK W. MITCHELL D. KELLY		37-35 E	37-35 E	0.2A								Limited Access
81	FRANK W. MITCHELL D. KELLY		37-35 E	37-35 E	0.1A								Limited Access
82	FRANK W. MITCHELL D. KELLY		37-35 E	37-35 E	0.2A								Limited Access
83	FRANK W. MITCHELL D. KELLY		37-35 E	37-35 E	0.1A								Limited Access
84	FRANK W. MITCHELL D. KELLY		37-35 E	37-35 E	0.2A								Limited Access
85	FRANK W. MITCHELL D. KELLY		37-35 E	37-35 E	0.1A								Limited Access
86	FRANK W. MITCHELL D. KELLY		37-35 E	37-35 E	0.2A								Limited Access
87	FRANK W. MITCHELL D. KELLY		37-35 E	37-35 E	0.1A								Limited Access
88	FRANK W. MITCHELL D. KELLY		37-35 E	37-35 E	0.2A								Limited Access
89	FRANK W. MITCHELL D. KELLY		37-35 E	37-35 E	0.1A								Limited Access
90	FRANK W. MITCHELL D. KELLY		37-35 E	37-35 E	0.2A								Limited Access
91	FRANK W. MITCHELL D. KELLY		37-35 E	37-35 E	0.1A								Limited Access
92	FRANK W. MITCHELL D. KELLY		37-35 E	37-35 E	0.2A								Limited Access
93	FRANK W. MITCHELL D. KELLY		37-35 E	37-35 E	0.1A								Limited Access
94	FRANK W. MITCHELL D. KELLY		37-35 E	37-35 E	0.2A								Limited Access
95	FRANK W. MITCHELL D. KELLY		37-35 E	37-35 E	0.1A								Limited Access
96	FRANK W. MITCHELL D. KELLY		37-35 E	37-35 E	0.2A								Limited Access
97	FRANK W. MITCHELL D. KELLY		37-35 E	37-35 E	0.1A								Limited Access
98	FRANK W. MITCHELL D. KELLY		37-35 E	37-35 E	0.2A								Limited Access
99	FRANK W. MITCHELL D. KELLY		37-35 E	37-35 E	0.1A								Limited Access
100	FRANK W. MITCHELL D. KELLY		37-35 E	37-35 E	0.2A								Limited Access

TABLE OF REVISIONS

REVISION NO.	SHEET NO.	DESCRIPTION OF REVISION	DATE	MADE BY	APPROVED BY
1		Added Parcel # 36B	9-10-64	SRT	JL
2		Changed Parcel 3 to 36B-33 4 to 36B-40, 13 increased area of 36B, 13 B increased area of 36A, 17A, 18 to 19, reduced take on 13B, increased take on 59, reduced take on 13A, increased take on 17B Above changes are all due to revision of limited access line.	9-15-64	WAT	JL
3		Parcels No 32 B8C added to obtain fee title to pier area	7-20-64	RBM	HPR
4	36	Construct drive to Chandler Road	4-10-64	RVT	LCT
5		Parcel # 20 - Slope rights omit red on Detail Sheets.	12-17-64	MMS	JL
6		Parcel # 5 - Change of property lines, total area and taking	12-17-64	MMS	JL
7		Parcel # 40 Change in title	12-29-64	MMS	JL
8					

STATE OF VERMONT
DEPARTMENT OF HIGHWAYS
RIGHT-OF-WAY PLANS
(DETAIL SHEET)

TABLE OF PROJECT PROPERTY ACQUISITION

PARCEL NO.	GRANTOR	SHEET NO.	BEGINNING STATION	ENDING STATION	TAKING	REM.	RIGHTS	TITLE TAKEN	DATE	TOWN OR CITY RECORDED	BK.	P.G.	REMARKS
1	PAUL & BEILLE TARDIE	56+00 RT	57+22 (USS)										
2	PAUL & BEILLE TARDIE	57+22 (USS)	58+44 (RT)										
3	PAUL & BEILLE TARDIE	58+44 (RT)	59+66 (RT)										
4	PAUL & BEILLE TARDIE	59+66 (RT)	60+88 (RT)										
5	PAUL & BEILLE TARDIE	60+88 (RT)	62+10 (RT)										
6	PAUL & BEILLE TARDIE	62+10 (RT)	63+32 (RT)										
7	PAUL & BEILLE TARDIE	63+32 (RT)	64+54 (RT)										
8	PAUL & BEILLE TARDIE	64+54 (RT)	65+76 (RT)										
9	PAUL & BEILLE TARDIE	65+76 (RT)	67+00 (RT)										
10	PAUL & BEILLE TARDIE	67+00 (RT)	68+22 (RT)										
11	PAUL & BEILLE TARDIE	68+22 (RT)	69+44 (RT)										
12	PAUL & BEILLE TARDIE	69+44 (RT)	70+66 (RT)										
13	PAUL & BEILLE TARDIE	70+66 (RT)	71+88 (RT)										
14	PAUL & BEILLE TARDIE	71+88 (RT)	73+10 (RT)										
15	PAUL & BEILLE TARDIE	73+10 (RT)	74+32 (RT)										
16	PAUL & BEILLE TARDIE	74+32 (RT)	75+54 (RT)										
17	PAUL & BEILLE TARDIE	75+54 (RT)	76+76 (RT)										
18	PAUL & BEILLE TARDIE	76+76 (RT)	78+00 (RT)										
19	PAUL & BEILLE TARDIE	78+00 (RT)	79+22 (RT)										
20	PAUL & BEILLE TARDIE	79+22 (RT)	80+44 (RT)										
21	PAUL & BEILLE TARDIE	80+44 (RT)	81+66 (RT)										
22	PAUL & BEILLE TARDIE	81+66 (RT)	82+88 (RT)										
23	PAUL & BEILLE TARDIE	82+88 (RT)	84+10 (RT)										
24	PAUL & BEILLE TARDIE	84+10 (RT)	85+32 (RT)										
25	PAUL & BEILLE TARDIE	85+32 (RT)	86+54 (RT)										
26	PAUL & BEILLE TARDIE	86+54 (RT)	87+76 (RT)										
27	PAUL & BEILLE TARDIE	87+76 (RT)	89+00 (RT)										
28	PAUL & BEILLE TARDIE	89+00 (RT)	90+22 (RT)										
29	PAUL & BEILLE TARDIE	90+22 (RT)	91+44 (RT)										
30	PAUL & BEILLE TARDIE	91+44 (RT)	92+66 (RT)										
31	PAUL & BEILLE TARDIE	92+66 (RT)	93+88 (RT)										
32	PAUL & BEILLE TARDIE	93+88 (RT)	95+10 (RT)										
33	PAUL & BEILLE TARDIE	95+10 (RT)	96+32 (RT)										
34	PAUL & BEILLE TARDIE	96+32 (RT)	97+54 (RT)										
35	PAUL & BEILLE TARDIE	97+54 (RT)	98+76 (RT)										
36	PAUL & BEILLE TARDIE	98+76 (RT)	100+00 (RT)										
37	PAUL & BEILLE TARDIE	100+00 (RT)	101+22 (RT)										
38	PAUL & BEILLE TARDIE	101+22 (RT)	102+44 (RT)										
39	PAUL & BEILLE TARDIE	102+44 (RT)	103+66 (RT)										
40	PAUL & BEILLE TARDIE	103+66 (RT)	104+88 (RT)										
41	PAUL & BEILLE TARDIE	104+88 (RT)	106+10 (RT)										
42	PAUL & BEILLE TARDIE	106+10 (RT)	107+32 (RT)										
43	PAUL & BEILLE TARDIE	107+32 (RT)	108+54 (RT)										
44	PAUL & BEILLE TARDIE	108+54 (RT)	109+76 (RT)										
45	PAUL & BEILLE TARDIE	109+76 (RT)	111+00 (RT)										
46	PAUL & BEILLE TARDIE	111+00 (RT)	112+22 (RT)										
47	PAUL & BEILLE TARDIE	112+22 (RT)	113+44 (RT)										
48	PAUL & BEILLE TARDIE	113+44 (RT)	114+66 (RT)										
49	PAUL & BEILLE TARDIE	114+66 (RT)	115+88 (RT)										
50	PAUL & BEILLE TARDIE	115+88 (RT)	117+10 (RT)										
51	PAUL & BEILLE TARDIE	117+10 (RT)	118+32 (RT)										
52	PAUL & BEILLE TARDIE	118+32 (RT)	119+54 (RT)										
53	PAUL & BEILLE TARDIE	119+54 (RT)	120+76 (RT)										
54	PAUL & BEILLE TARDIE	120+76 (RT)	122+00 (RT)										
55	PAUL & BEILLE TARDIE	122+00 (RT)	123+22 (RT)										
56	PAUL & BEILLE TARDIE	123+22 (RT)	124+44 (RT)										
57	PAUL & BEILLE TARDIE	124+44 (RT)	125+66 (RT)										
58	PAUL & BEILLE TARDIE	125+66 (RT)	126+88 (RT)										
59	PAUL & BEILLE TARDIE	126+88 (RT)	128+10 (RT)										
60	PAUL & BEILLE TARDIE	128+10 (RT)	129+32 (RT)										
61	PAUL & BEILLE TARDIE	129+32 (RT)	130+54 (RT)										
62	PAUL & BEILLE TARDIE	130+54 (RT)	131+76 (RT)										
63	PAUL & BEILLE TARDIE	131+76 (RT)	133+00 (RT)										
64	PAUL & BEILLE TARDIE	133+00 (RT)	134+22 (RT)										
65	PAUL & BEILLE TARDIE	134+22 (RT)	135+44 (RT)										
66	PAUL & BEILLE TARDIE	135+44 (RT)	136+66 (RT)										
67	PAUL & BEILLE TARDIE	136+66 (RT)	137+88 (RT)										
68	PAUL & BEILLE TARDIE	137+88 (RT)	139+10 (RT)										
69	PAUL & BEILLE TARDIE	139+10 (RT)	140+32 (RT)										
70	PAUL & BEILLE TARDIE	140+32 (RT)	141+54 (RT)										
71	PAUL & BEILLE TARDIE	141+54 (RT)	142+76 (RT)										
72	PAUL & BEILLE TARDIE	142+76 (RT)	144+00 (RT)										
73	PAUL & BEILLE TARDIE	144+00 (RT)	145+22 (RT)										
74	PAUL & BEILLE TARDIE	145+22 (RT)	146+44 (RT)										
75	PAUL & BEILLE TARDIE	146+44 (RT)	147+66 (RT)										
76	PAUL & BEILLE TARDIE	147+66 (RT)	148+88 (RT)										
77	PAUL & BEILLE TARDIE	148+88 (RT)	150+10 (RT)										
78	PAUL & BEILLE TARDIE	150+10 (RT)	151+32 (RT)										
79	PAUL & BEILLE TARDIE	151+32 (RT)	152+54 (RT)										
80	PAUL & BEILLE TARDIE	152+54 (RT)	153+76 (RT)										
81	PAUL & BEILLE TARDIE	153+76 (RT)	155+00 (RT)										
82	PAUL & BEILLE TARDIE	155+00 (RT)	156+22 (RT)										
83	PAUL & BEILLE TARDIE	156+22 (RT)	157+44 (RT)										
84	PAUL & BEILLE TARDIE	157+44 (RT)	158+66 (RT)										
85	PAUL & BEILLE TARDIE	158+66 (RT)	159+88 (RT)										
86	PAUL & BEILLE TARDIE	159+88 (RT)	161+10 (RT)										
87	PAUL & BEILLE TARDIE	161+10 (RT)	162+32 (RT)										
88	PAUL & BEILLE TARDIE	162+32 (RT)	163+54 (RT)										
89	PAUL & BEILLE TARDIE	163+54 (RT)	164+76 (RT)										
90	PAUL & BEILLE TARDIE	164+76 (RT)	166+00 (RT)										
91	PAUL & BEILLE TARDIE	166+00 (RT)	167+22 (RT)										
92	PAUL & BEILLE TARDIE	167+22 (RT)	168+44 (RT)										
93	PAUL & BEILLE TARDIE	168+44 (RT)	169+66 (RT)										
94	PAUL & BEILLE TARDIE	169+66 (RT)	170+88 (RT)										
95	PAUL & BEILLE TARDIE	170+88 (RT)	172+10 (RT)										
96	PAUL & BEILLE TARDIE	172+10 (RT)	173+32 (RT)										
97	PAUL & BEILLE TARDIE	173+32 (RT)	174+54 (RT)										
98	PAUL & BEILLE TARDIE	174+54 (RT)	175+76 (RT)										
99	PAUL & BEILLE TARDIE	175+76 (RT)	177+00 (RT)										
100	PAUL & BEILLE TARDIE	177+00 (RT)	178+22 (RT)										
101	PAUL & BEILLE TARDIE	178+22 (RT)	179+44 (RT)										
102	PAUL & BEILLE TARDIE	179+44 (RT)	180+66 (RT)										
103	PAUL & BEILLE TARDIE	180+66 (RT)	181+88 (RT)										
104	PAUL & BEILLE TARDIE	181+88 (RT)	183+10 (RT)										
105	PAUL & BEILLE TARDIE	183+10 (RT)	184+32 (RT)										
106	PAUL & BEILLE TARDIE	184+32 (RT)	185+54 (RT)										
107	PAUL & BEILLE TARDIE	185+54 (RT)	186+76 (RT)										
108	PAUL & BEILLE TARDIE	186+76 (RT)	188+00 (RT)										
109	PAUL & BEILLE TARDIE	188+00 (RT)	189+22 (RT)										
110	PAUL & BEILLE TARDIE	189+22 (RT)	190+44 (RT)										
111	PAUL & BEILLE TARDIE	190+44 (RT)	191+66 (RT)										
112	PAUL & BEILLE TARDIE	191+66 (RT)	192+88 (RT)										

STATE OF VERMONT
DEPARTMENT OF HIGHWAYS
RIGHT-OF-WAY PLANS
(DETAIL SHEET)

TABLE OF PROJECT PROPERTY ACQUISITION

PARCEL NO.	GRANTOR	SHEET NO.	BEGINNING STATION	ENDING STATION	TAKING'	REM.'	RIGHTS	TITLE TAKEN	DATE	TOWN OR CITY RECORDED	BK.	PG.	REMARKS
17A	STATE OF VERMONT	20	1771405.00	1771405.00	0.50	0.50							
17B	STATE OF VERMONT	20	1771405.00	1771405.00	0.50	0.50							
18	STATE OF VERMONT	20	1771470.00	1771470.00	0.50	15.17							
19	STATE OF VERMONT	20	1771470.00	1771470.00	0.50	15.17							
20	STATE OF VERMONT	20	1771470.00	1771470.00	0.50	15.17							
21	STATE OF VERMONT	20	1771470.00	1771470.00	0.50	15.17							
22	STATE OF VERMONT	20	1771470.00	1771470.00	0.50	15.17							
23	STATE OF VERMONT	20	1771470.00	1771470.00	0.50	15.17							
24	STATE OF VERMONT	20	1771470.00	1771470.00	0.50	15.17							
25	STATE OF VERMONT	20	1771470.00	1771470.00	0.50	15.17							
26	STATE OF VERMONT	20	1771470.00	1771470.00	0.50	15.17							
27	STATE OF VERMONT	20	1771470.00	1771470.00	0.50	15.17							
28	STATE OF VERMONT	20	1771470.00	1771470.00	0.50	15.17							
29	STATE OF VERMONT	20	1771470.00	1771470.00	0.50	15.17							
30	FARRELL FARMS INC.	30	1322400.00	1322400.00	10.10	12.50							
31	A. BELLE TARDIE	31	1322400.00	1322400.00	10.10	12.50							
32	STATE OF VERMONT	32	1322400.00	1322400.00	10.10	12.50							
33	STATE OF VERMONT	32	1322400.00	1322400.00	10.10	12.50							
34	STATE OF VERMONT	32	1322400.00	1322400.00	10.10	12.50							
35	STATE OF VERMONT	32	1322400.00	1322400.00	10.10	12.50							
36	STATE OF VERMONT	32	1322400.00	1322400.00	10.10	12.50							
37	STATE OF VERMONT	32	1322400.00	1322400.00	10.10	12.50							
38	STATE OF VERMONT	32	1322400.00	1322400.00	10.10	12.50							
39	STATE OF VERMONT	32	1322400.00	1322400.00	10.10	12.50							
40	STATE OF VERMONT	32	1322400.00	1322400.00	10.10	12.50							
41	STATE OF VERMONT	32	1322400.00	1322400.00	10.10	12.50							
42	STATE OF VERMONT	32	1322400.00	1322400.00	10.10	12.50							
43	STATE OF VERMONT	32	1322400.00	1322400.00	10.10	12.50							
44	STATE OF VERMONT	32	1322400.00	1322400.00	10.10	12.50							
45	STATE OF VERMONT	32	1322400.00	1322400.00	10.10	12.50							
46	STATE OF VERMONT	32	1322400.00	1322400.00	10.10	12.50							
47	STATE OF VERMONT	32	1322400.00	1322400.00	10.10	12.50							
48	STATE OF VERMONT	32	1322400.00	1322400.00	10.10	12.50							
49	STATE OF VERMONT	32	1322400.00	1322400.00	10.10	12.50							
50	STATE OF VERMONT	32	1322400.00	1322400.00	10.10	12.50							
51	STATE OF VERMONT	32	1322400.00	1322400.00	10.10	12.50							
52	STATE OF VERMONT	32	1322400.00	1322400.00	10.10	12.50							
53	STATE OF VERMONT	32	1322400.00	1322400.00	10.10	12.50							
54	STATE OF VERMONT	32	1322400.00	1322400.00	10.10	12.50							
55	TOWN OF HARTFORD	55	52770 (US 9)	53287 (US 9)									

TABLE OF REVISIONS

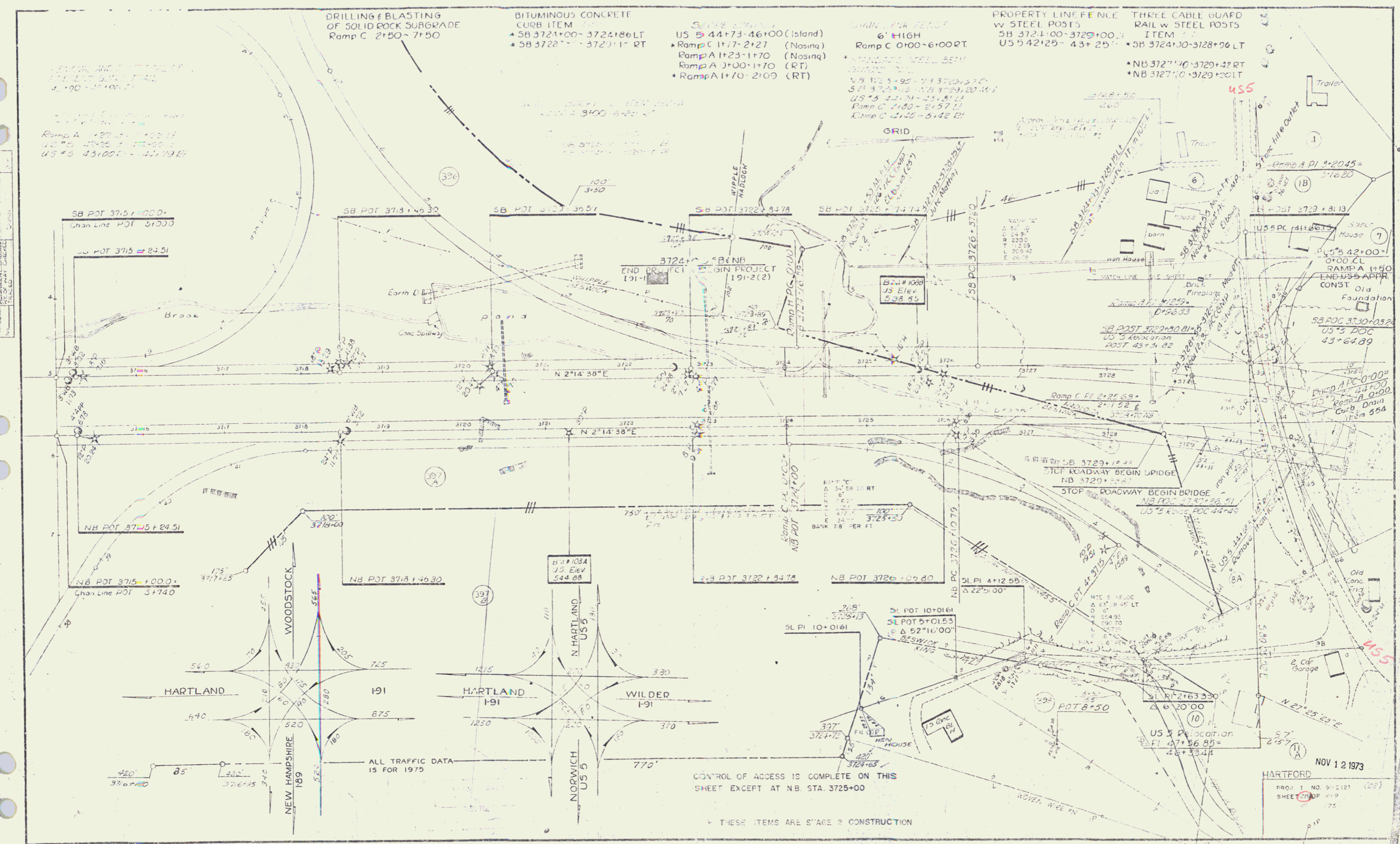
REVISION NO.	SHEET NO.	DESCRIPTION OF REVISION	DATE	MADE BY	APPROVED BY
		CHANGED ALL PLANS IN ACCORDANCE WITH 1964 SPECIFICATIONS	3/22/65	RVT	LCJ
		DELETED PIPE FROM STATIONS N.B. 388+00 TO 388+70 LT.	3/22/65	RVT	LCJ
		CHANGED CONSTRUCTION LIMITS STA. N.B. 376+00 TO 375+00 RT.	3/22/65	RVT	LCJ
		DELETED SIDE FILL FROM LEAVE STA. N.B. 376+25 TO 375+40 RT.	3/22/65	RVT	LCJ
		MOVED PIPE FROM N.B. 387+25 RT-LT TO N.B. 387+40 RT-LT	3/22/65	RVT	LCJ
		MOVED PIPE FROM N.B. 387+25 LT-S.B. 387+45 RT TO 387+40 LT-S.B. 387+40 RT	3/22/65	RVT	LCJ
		MOVED PIPE FROM S.B. 387+45 RT-LT TO S.B. 387+40 RT-LT	3/22/65	RVT	LCJ
		MOVED PIPE FROM S.B. 387+45	3/22/65	RVT	LCJ
		MOVED PIPE FROM S.B. 387+45 TO 387+00 LT TO S.B. 387+00 LT	3/22/65	RVT	LCJ
		MOVED PIPE FROM S.B. 386+55 TO 386+00 RT-LT TO N.B. 386+70 TO 386+80 RT-LT	3/22/65	RVT	LCJ
		MOVED PIPE FROM S.B. 386+80 LT-S.B. 386+80 LT	3/22/65	RVT	LCJ
		MOVED PIPE FROM S.B. 386+80 RT-S.B. 386+80 RT	3/22/65	RVT	LCJ
		MOVED PIPE FROM S.B. 386+80 RT-LT TO S.B. 386+80 RT-LT	3/22/65	RVT	LCJ
		MOVED PIPE FROM S.B. 386+80 LT TO S.B. 386+80 LT	3/22/65	RVT	LCJ
		MOVED PIPE FROM N.B. 386+80 RT TO N.B. 386+80 RT	3/22/65	RVT	LCJ
		CHANGED PROPERTY LINE FENCE TO CHAIN LINK FENCE S.B. 386+00 TO 387+00	3/22/65	RVT	LCJ
		CHANGED ALL BRIDGE STATIONS PER BRIDGE PLANS	3/22/65	RVT	LCJ

CONTINUED ON SHEET 42

MADE BY: [Signature] DATE: 3/22/65
CHECKED BY: [Signature] DATE: 3/22/65

LEGEND
 --- SR --- SR --- SLOPE RIGHTS
 --- P --- P --- PROPERTY LINE
 --- A --- A --- TOP OF CUT
 --- O --- O --- TOE OF SLOPE
 --- T --- T --- TAKING WITHOUT ACCESS
 --- T --- T --- TAKING WITHOUT ACCESS ALONG PROPERTY LINES
 --- T --- T --- TAKING WITH ACCESS
 --- P --- P --- PRECINCT R.O.W.

HARTFORD - I 91-2 91
 APPROVED: [Signature] DATE: 3/22/65
 APPROVED: [Signature] DATE: 3/22/65
 HARTFORD - BRADFORD I 91-2(G) R.O.W.
 HARTFORD - URBAN
 SHEET 50 OF 204 SHEETS



US 5 38+75-42+25 RT
US 5 35+75-39+00 RT
US 5 34+50-38+00 RT
US 5 33+25-30+00 RT
US 5 32+00-28+00 RT
US 5 30+75-28+00 RT
US 5 29+50-27+00 RT
US 5 28+25-25+00 RT
US 5 27+00-23+00 RT
US 5 25+75-21+00 RT
US 5 24+50-19+00 RT
US 5 23+25-17+00 RT
US 5 22+00-15+00 RT
US 5 20+75-13+00 RT
US 5 19+50-11+00 RT
US 5 18+25-9+00 RT
US 5 17+00-7+00 RT
US 5 15+75-5+00 RT
US 5 14+50-3+00 RT
US 5 13+25-1+00 RT
US 5 12+00-0+00 RT
US 5 10+75-0+00 RT
US 5 9+50-0+00 RT
US 5 8+25-0+00 RT
US 5 7+00-0+00 RT
US 5 5+75-0+00 RT
US 5 4+50-0+00 RT
US 5 3+25-0+00 RT
US 5 2+00-0+00 RT
US 5 0+75-0+00 RT
US 5 0+50-0+00 RT
US 5 0+25-0+00 RT
US 5 0+00-0+00 RT

CRASH LINE
PUMP 3 10+00-20+00 RT
PUMP 4 10+00-20+00 RT
PUMP 5 10+00-20+00 RT
PUMP 6 10+00-20+00 RT
PUMP 7 10+00-20+00 RT
PUMP 8 10+00-20+00 RT
PUMP 9 10+00-20+00 RT
PUMP 10 10+00-20+00 RT
PUMP 11 10+00-20+00 RT
PUMP 12 10+00-20+00 RT
PUMP 13 10+00-20+00 RT
PUMP 14 10+00-20+00 RT
PUMP 15 10+00-20+00 RT
PUMP 16 10+00-20+00 RT
PUMP 17 10+00-20+00 RT
PUMP 18 10+00-20+00 RT
PUMP 19 10+00-20+00 RT
PUMP 20 10+00-20+00 RT
PUMP 21 10+00-20+00 RT
PUMP 22 10+00-20+00 RT
PUMP 23 10+00-20+00 RT
PUMP 24 10+00-20+00 RT
PUMP 25 10+00-20+00 RT
PUMP 26 10+00-20+00 RT
PUMP 27 10+00-20+00 RT
PUMP 28 10+00-20+00 RT
PUMP 29 10+00-20+00 RT
PUMP 30 10+00-20+00 RT
PUMP 31 10+00-20+00 RT
PUMP 32 10+00-20+00 RT
PUMP 33 10+00-20+00 RT
PUMP 34 10+00-20+00 RT
PUMP 35 10+00-20+00 RT
PUMP 36 10+00-20+00 RT
PUMP 37 10+00-20+00 RT
PUMP 38 10+00-20+00 RT
PUMP 39 10+00-20+00 RT
PUMP 40 10+00-20+00 RT
PUMP 41 10+00-20+00 RT
PUMP 42 10+00-20+00 RT
PUMP 43 10+00-20+00 RT
PUMP 44 10+00-20+00 RT
PUMP 45 10+00-20+00 RT
PUMP 46 10+00-20+00 RT
PUMP 47 10+00-20+00 RT
PUMP 48 10+00-20+00 RT
PUMP 49 10+00-20+00 RT
PUMP 50 10+00-20+00 RT
PUMP 51 10+00-20+00 RT
PUMP 52 10+00-20+00 RT
PUMP 53 10+00-20+00 RT
PUMP 54 10+00-20+00 RT
PUMP 55 10+00-20+00 RT
PUMP 56 10+00-20+00 RT
PUMP 57 10+00-20+00 RT
PUMP 58 10+00-20+00 RT
PUMP 59 10+00-20+00 RT
PUMP 60 10+00-20+00 RT
PUMP 61 10+00-20+00 RT
PUMP 62 10+00-20+00 RT
PUMP 63 10+00-20+00 RT
PUMP 64 10+00-20+00 RT
PUMP 65 10+00-20+00 RT
PUMP 66 10+00-20+00 RT
PUMP 67 10+00-20+00 RT
PUMP 68 10+00-20+00 RT
PUMP 69 10+00-20+00 RT
PUMP 70 10+00-20+00 RT
PUMP 71 10+00-20+00 RT
PUMP 72 10+00-20+00 RT
PUMP 73 10+00-20+00 RT
PUMP 74 10+00-20+00 RT
PUMP 75 10+00-20+00 RT
PUMP 76 10+00-20+00 RT
PUMP 77 10+00-20+00 RT
PUMP 78 10+00-20+00 RT
PUMP 79 10+00-20+00 RT
PUMP 80 10+00-20+00 RT
PUMP 81 10+00-20+00 RT
PUMP 82 10+00-20+00 RT
PUMP 83 10+00-20+00 RT
PUMP 84 10+00-20+00 RT
PUMP 85 10+00-20+00 RT
PUMP 86 10+00-20+00 RT
PUMP 87 10+00-20+00 RT
PUMP 88 10+00-20+00 RT
PUMP 89 10+00-20+00 RT
PUMP 90 10+00-20+00 RT
PUMP 91 10+00-20+00 RT
PUMP 92 10+00-20+00 RT
PUMP 93 10+00-20+00 RT
PUMP 94 10+00-20+00 RT
PUMP 95 10+00-20+00 RT
PUMP 96 10+00-20+00 RT
PUMP 97 10+00-20+00 RT
PUMP 98 10+00-20+00 RT
PUMP 99 10+00-20+00 RT
PUMP 100 10+00-20+00 RT

CONST. DRIVES
US 5 35+75-39+00 RT COMM.
WINDSOR DRIVE STA 1+15 RT
US 5 35+75-39+00 RT
US 5 34+50-38+00 RT
US 5 33+25-30+00 RT
US 5 32+00-28+00 RT
US 5 30+75-28+00 RT
US 5 29+50-27+00 RT
US 5 28+25-25+00 RT
US 5 27+00-23+00 RT
US 5 25+75-21+00 RT
US 5 24+50-19+00 RT
US 5 23+25-17+00 RT
US 5 22+00-15+00 RT
US 5 20+75-13+00 RT
US 5 19+50-11+00 RT
US 5 18+25-9+00 RT
US 5 17+00-7+00 RT
US 5 15+75-5+00 RT
US 5 14+50-3+00 RT
US 5 13+25-1+00 RT
US 5 12+00-0+00 RT
US 5 10+75-0+00 RT
US 5 9+50-0+00 RT
US 5 8+25-0+00 RT
US 5 7+00-0+00 RT
US 5 5+75-0+00 RT
US 5 4+50-0+00 RT
US 5 3+25-0+00 RT
US 5 2+00-0+00 RT
US 5 0+75-0+00 RT
US 5 0+50-0+00 RT
US 5 0+25-0+00 RT
US 5 0+00-0+00 RT

RAMP A 7+07-12+00 LT
RAMP B 11+00-17+00 LT
RAMP C 15+00-21+00 LT
RAMP D 19+00-25+00 LT
RAMP E 23+00-29+00 LT
RAMP F 27+00-33+00 LT
RAMP G 31+00-37+00 LT
RAMP H 35+00-41+00 LT
RAMP I 39+00-45+00 LT
RAMP J 43+00-49+00 LT
RAMP K 47+00-53+00 LT
RAMP L 51+00-57+00 LT
RAMP M 55+00-61+00 LT
RAMP N 59+00-65+00 LT
RAMP O 63+00-69+00 LT
RAMP P 67+00-73+00 LT
RAMP Q 71+00-77+00 LT
RAMP R 75+00-81+00 LT
RAMP S 79+00-85+00 LT
RAMP T 83+00-89+00 LT
RAMP U 87+00-93+00 LT
RAMP V 91+00-97+00 LT
RAMP W 95+00-101+00 LT
RAMP X 99+00-105+00 LT
RAMP Y 103+00-109+00 LT
RAMP Z 107+00-113+00 LT
RAMP AA 111+00-117+00 LT
RAMP AB 115+00-121+00 LT
RAMP AC 119+00-125+00 LT
RAMP AD 123+00-129+00 LT
RAMP AE 127+00-133+00 LT
RAMP AF 131+00-137+00 LT
RAMP AG 135+00-141+00 LT
RAMP AH 139+00-145+00 LT
RAMP AI 143+00-149+00 LT
RAMP AJ 147+00-153+00 LT
RAMP AK 151+00-157+00 LT
RAMP AL 155+00-161+00 LT
RAMP AM 159+00-165+00 LT
RAMP AN 163+00-169+00 LT
RAMP AO 167+00-173+00 LT
RAMP AP 171+00-177+00 LT
RAMP AQ 175+00-181+00 LT
RAMP AR 179+00-185+00 LT
RAMP AS 183+00-189+00 LT
RAMP AT 187+00-193+00 LT
RAMP AU 191+00-197+00 LT
RAMP AV 195+00-201+00 LT
RAMP AW 199+00-205+00 LT
RAMP AX 203+00-209+00 LT
RAMP AY 207+00-213+00 LT
RAMP AZ 211+00-217+00 LT
RAMP BA 215+00-221+00 LT
RAMP BB 219+00-225+00 LT
RAMP BC 223+00-229+00 LT
RAMP BD 227+00-233+00 LT
RAMP BE 231+00-237+00 LT
RAMP BF 235+00-241+00 LT
RAMP BG 239+00-245+00 LT
RAMP BH 243+00-249+00 LT
RAMP BI 247+00-253+00 LT
RAMP BJ 251+00-257+00 LT
RAMP BK 255+00-261+00 LT
RAMP BL 259+00-265+00 LT
RAMP BM 263+00-269+00 LT
RAMP BN 267+00-273+00 LT
RAMP BO 271+00-277+00 LT
RAMP BP 275+00-281+00 LT
RAMP BQ 279+00-285+00 LT
RAMP BR 283+00-289+00 LT
RAMP BS 287+00-293+00 LT
RAMP BT 291+00-297+00 LT
RAMP BU 295+00-301+00 LT
RAMP BV 299+00-305+00 LT
RAMP BW 303+00-309+00 LT
RAMP BX 307+00-313+00 LT
RAMP BY 311+00-317+00 LT
RAMP BZ 315+00-321+00 LT
RAMP CA 319+00-325+00 LT
RAMP CB 323+00-329+00 LT
RAMP CC 327+00-333+00 LT
RAMP CD 331+00-337+00 LT
RAMP CE 335+00-341+00 LT
RAMP CF 339+00-345+00 LT
RAMP CG 343+00-349+00 LT
RAMP CH 347+00-353+00 LT
RAMP CI 351+00-357+00 LT
RAMP CJ 355+00-361+00 LT
RAMP CK 359+00-365+00 LT
RAMP CL 363+00-369+00 LT
RAMP CM 367+00-373+00 LT
RAMP CN 371+00-377+00 LT
RAMP CO 375+00-381+00 LT
RAMP CP 379+00-385+00 LT
RAMP CQ 383+00-389+00 LT
RAMP CR 387+00-393+00 LT
RAMP CS 391+00-397+00 LT
RAMP CT 395+00-401+00 LT
RAMP CU 399+00-405+00 LT
RAMP CV 403+00-409+00 LT
RAMP CW 407+00-413+00 LT
RAMP CX 411+00-417+00 LT
RAMP CY 415+00-421+00 LT
RAMP CZ 419+00-425+00 LT
RAMP DA 423+00-429+00 LT
RAMP DB 427+00-433+00 LT
RAMP DC 431+00-437+00 LT
RAMP DD 435+00-441+00 LT
RAMP DE 439+00-445+00 LT
RAMP DF 443+00-449+00 LT
RAMP DG 447+00-453+00 LT
RAMP DH 451+00-457+00 LT
RAMP DI 455+00-461+00 LT
RAMP DJ 459+00-465+00 LT
RAMP DK 463+00-469+00 LT
RAMP DL 467+00-473+00 LT
RAMP DM 471+00-477+00 LT
RAMP DN 475+00-481+00 LT
RAMP DO 479+00-485+00 LT
RAMP DP 483+00-489+00 LT
RAMP DQ 487+00-493+00 LT
RAMP DR 491+00-497+00 LT
RAMP DS 495+00-501+00 LT
RAMP DT 499+00-505+00 LT
RAMP DU 503+00-509+00 LT
RAMP DV 507+00-513+00 LT
RAMP DW 511+00-517+00 LT
RAMP DX 515+00-521+00 LT
RAMP DY 519+00-525+00 LT
RAMP DZ 523+00-529+00 LT
RAMP EA 527+00-533+00 LT
RAMP EB 531+00-537+00 LT
RAMP EC 535+00-541+00 LT
RAMP ED 539+00-545+00 LT
RAMP EE 543+00-549+00 LT
RAMP EF 547+00-553+00 LT
RAMP EG 551+00-557+00 LT
RAMP EH 555+00-561+00 LT
RAMP EI 559+00-565+00 LT
RAMP EJ 563+00-569+00 LT
RAMP EK 567+00-573+00 LT
RAMP EL 571+00-577+00 LT
RAMP EM 575+00-581+00 LT
RAMP EN 579+00-585+00 LT
RAMP EO 583+00-589+00 LT
RAMP EP 587+00-593+00 LT
RAMP EQ 591+00-597+00 LT
RAMP ER 595+00-601+00 LT
RAMP ES 599+00-605+00 LT
RAMP ET 603+00-609+00 LT
RAMP EU 607+00-613+00 LT
RAMP EV 611+00-617+00 LT
RAMP EW 615+00-621+00 LT
RAMP EX 619+00-625+00 LT
RAMP EY 623+00-629+00 LT
RAMP EZ 627+00-633+00 LT
RAMP FA 631+00-637+00 LT
RAMP FB 635+00-641+00 LT
RAMP FC 639+00-645+00 LT
RAMP FD 643+00-649+00 LT
RAMP FE 647+00-653+00 LT
RAMP FF 651+00-657+00 LT
RAMP FG 655+00-661+00 LT
RAMP FH 659+00-665+00 LT
RAMP FI 663+00-669+00 LT
RAMP FJ 667+00-673+00 LT
RAMP FK 671+00-677+00 LT
RAMP FL 675+00-681+00 LT
RAMP FO 679+00-685+00 LT
RAMP FP 683+00-689+00 LT
RAMP FQ 687+00-693+00 LT
RAMP FR 691+00-697+00 LT
RAMP FS 695+00-701+00 LT
RAMP FT 699+00-705+00 LT
RAMP FU 703+00-709+00 LT
RAMP FV 707+00-713+00 LT
RAMP FW 711+00-717+00 LT
RAMP FX 715+00-721+00 LT
RAMP FY 719+00-725+00 LT
RAMP FZ 723+00-729+00 LT
RAMP GA 727+00-733+00 LT
RAMP GB 731+00-737+00 LT
RAMP GC 735+00-741+00 LT
RAMP GD 739+00-745+00 LT
RAMP GE 743+00-749+00 LT
RAMP GF 747+00-753+00 LT
RAMP GG 751+00-757+00 LT
RAMP GH 755+00-761+00 LT
RAMP GI 759+00-765+00 LT
RAMP GJ 763+00-769+00 LT
RAMP GK 767+00-773+00 LT
RAMP GL 771+00-777+00 LT
RAMP GM 775+00-781+00 LT
RAMP GN 779+00-785+00 LT
RAMP GO 783+00-789+00 LT
RAMP GP 787+00-793+00 LT
RAMP GQ 791+00-797+00 LT
RAMP GR 795+00-801+00 LT
RAMP GS 799+00-805+00 LT
RAMP GT 803+00-809+00 LT
RAMP GU 807+00-813+00 LT
RAMP GV 811+00-817+00 LT
RAMP GW 815+00-821+00 LT
RAMP GX 819+00-825+00 LT
RAMP GY 823+00-829+00 LT
RAMP GZ 827+00-833+00 LT
RAMP HA 831+00-837+00 LT
RAMP HB 835+00-841+00 LT
RAMP HC 839+00-845+00 LT
RAMP HD 843+00-849+00 LT
RAMP HE 847+00-853+00 LT
RAMP HF 851+00-857+00 LT
RAMP HG 855+00-861+00 LT
RAMP HH 859+00-865+00 LT
RAMP HI 863+00-869+00 LT
RAMP HJ 867+00-873+00 LT
RAMP HK 871+00-877+00 LT
RAMP HL 875+00-881+00 LT
RAMP HO 879+00-885+00 LT
RAMP HP 883+00-889+00 LT
RAMP HQ 887+00-893+00 LT
RAMP HR 891+00-897+00 LT
RAMP HS 895+00-901+00 LT
RAMP HT 899+00-905+00 LT
RAMP HU 903+00-909+00 LT
RAMP HV 907+00-913+00 LT
RAMP HW 911+00-917+00 LT
RAMP HX 915+00-921+00 LT
RAMP HY 919+00-925+00 LT
RAMP HZ 923+00-929+00 LT
RAMP IA 927+00-933+00 LT
RAMP IB 931+00-937+00 LT
RAMP IC 935+00-941+00 LT
RAMP ID 939+00-945+00 LT
RAMP IE 943+00-949+00 LT
RAMP IF 947+00-953+00 LT
RAMP IG 951+00-957+00 LT
RAMP IH 955+00-961+00 LT
RAMP II 959+00-965+00 LT
RAMP IJ 963+00-969+00 LT
RAMP IK 967+00-973+00 LT
RAMP IL 971+00-977+00 LT
RAMP IO 975+00-981+00 LT
RAMP IP 979+00-985+00 LT
RAMP IQ 983+00-989+00 LT
RAMP IR 987+00-993+00 LT
RAMP IS 991+00-997+00 LT
RAMP IT 995+00-1001+00 LT
RAMP IU 999+00-1005+00 LT
RAMP IV 1003+00-1009+00 LT
RAMP IY 1007+00-1013+00 LT
RAMP IZ 1011+00-1017+00 LT
RAMP JA 1015+00-1021+00 LT
RAMP JB 1019+00-1025+00 LT
RAMP JC 1023+00-1029+00 LT
RAMP JD 1027+00-1033+00 LT
RAMP JE 1031+00-1037+00 LT
RAMP JF 1035+00-1041+00 LT
RAMP JG 1039+00-1045+00 LT
RAMP JH 1043+00-1049+00 LT
RAMP JI 1047+00-1053+00 LT
RAMP JJ 1051+00-1057+00 LT
RAMP JK 1055+00-1061+00 LT
RAMP JL 1059+00-1065+00 LT
RAMP JM 1063+00-1069+00 LT
RAMP JN 1067+00-1073+00 LT
RAMP JO 1071+00-1077+00 LT
RAMP JP 1075+00-1081+00 LT
RAMP JQ 1079+00-1085+00 LT
RAMP JR 1083+00-1089+00 LT
RAMP JS 1087+00-1093+00 LT
RAMP JT 1091+00-1097+00 LT
RAMP JU 1095+00-1101+00 LT
RAMP JV 1099+00-1105+00 LT
RAMP JY 1103+00-1109+00 LT
RAMP JZ 1107+00-1113+00 LT
RAMP KA 1111+00-1117+00 LT
RAMP KB 1115+00-1121+00 LT
RAMP KC 1119+00-1125+00 LT
RAMP KD 1123+00-1129+00 LT
RAMP KE 1127+00-1133+00 LT
RAMP KF 1131+00-1137+00 LT
RAMP KG 1135+00-1141+00 LT
RAMP KH 1139+00-1145+00 LT
RAMP KI 1143+00-1149+00 LT
RAMP KJ 1147+00-1153+00 LT
RAMP KK 1151+00-1157+00 LT
RAMP KL 1155+00-1161+00 LT
RAMP KO 1159+00-1165+00 LT
RAMP KP 1163+00-1169+00 LT
RAMP KQ 1167+00-1173+00 LT
RAMP KR 1171+00-1177+00 LT
RAMP KS 1175+00-1181+00 LT
RAMP KT 1179+00-1185+00 LT
RAMP KU 1183+00-1189+00 LT
RAMP KV 1187+00-1193+00 LT
RAMP KW 1191+00-1197+00 LT
RAMP KX 1195+00-1201+00 LT
RAMP KY 1199+00-1205+00 LT
RAMP KZ 1203+00-1209+00 LT
RAMP LA 1207+00-1213+00 LT
RAMP LB 1211+00-1217+00 LT
RAMP LC 1215+00-1221+00 LT
RAMP LD 1219+00-1225+00 LT
RAMP LE 1223+00-1229+00 LT
RAMP LF 1227+00-1233+00 LT
RAMP LG 1231+00-1237+00 LT
RAMP LH 1235+00-1241+00 LT
RAMP LI 1239+00-1245+00 LT
RAMP LJ 1243+00-1249+00 LT
RAMP LK 1247+00-1253+00 LT
RAMP LL 1251+00-1257+00 LT
RAMP LO 1255+00-1261+00 LT
RAMP LP 1259+00-1265+00 LT
RAMP LQ 1263+00-1269+00 LT
RAMP LR 1267+00-1273+00 LT
RAMP LS 1271+00-1277+00 LT
RAMP LT 1275+00-1281+00 LT
RAMP LU 1279+00-1285+00 LT
RAMP LV 1283+00-1289+00 LT
RAMP LW 1287+00-1293+00 LT
RAMP LX 1291+00-1297+00 LT
RAMP LY 1295+00-1301+00 LT
RAMP LZ 1299+00-1305+00 LT
RAMP MA 1303+00-1309+00 LT
RAMP MB 1307+00-1313+00 LT
RAMP MC 1311+00-1317+00 LT
RAMP MD 1315+00-1321+00 LT
RAMP ME 1319+00-1325+00 LT
RAMP MF 1323+00-1329+00 LT
RAMP MG 1327+00-1333+00 LT
RAMP MH 1331+00-1337+00 LT
RAMP MI 1335+00-1341+00 LT
RAMP MJ 1339+00-1345+00 LT
RAMP MK 1343+00-1349+00 LT
RAMP ML 1347+00-1353+00 LT
RAMP MO 1351+00-1357+00 LT
RAMP MP 1355+00-1361+00 LT
RAMP MQ 1359+00-1365+00 LT
RAMP MR 1363+00-1369+00 LT
RAMP MS 1367+00-1373+00 LT
RAMP MT 1371+00-1377+00 LT
RAMP MU 1375+00-1381+00 LT
RAMP MV 1379+00-1385+00 LT
RAMP MW 1383+00-1389+00 LT
RAMP MX 1387+00-1393+00 LT
RAMP MY 1391+00-1397+00 LT
RAMP MZ 1395+00-1401+00 LT
RAMP NA 1399+00-1405+00 LT
RAMP NB 1403+00-1409+00 LT
RAMP NC 1407+00-1413+00 LT
RAMP ND 1411+00-1417+00 LT
RAMP NE 1415+00-1421+00 LT
RAMP NF 1419+00-1425+00 LT
RAMP NG 1423+00-1429+00 LT
RAMP NH 1427+00-1433+00 LT
RAMP NI 1431+00-1437+00 LT
RAMP NJ 1435+00-1441+00 LT
RAMP NK 1439+00-1445+00 LT
RAMP NL 1443+00-1449+00 LT
RAMP NO 1447+00-1453+00 LT
RAMP NP 1451+00-1457+00 LT
RAMP NQ 1455+00-1461+00 LT
RAMP NR 1459+00-1465+00 LT
RAMP NS 1463+00-1469+00 LT
RAMP NT 1467+00-1473+00 LT
RAMP NU 1471+00-1477+00 LT
RAMP NV 1475+00-1481+00 LT
RAMP NW 1479+00-1485+00 LT
RAMP NX 1483+00-1489+00 LT
RAMP NY 1487+00-1493+00 LT
RAMP NZ 1491+00-1497+00 LT
RAMP OA 1495+00-1501+00 LT
RAMP OB 1499+00-1505+00 LT
RAMP OC 1503+00-1509+00 LT
RAMP OD 1507+00-1513+00 LT
RAMP OE 1511+00-1517+00 LT
RAMP OF 1515+00-1521+00 LT
RAMP OG 1519+00-1525+00 LT
RAMP OH 1523+00-1529+00 LT
RAMP OI 1527+00-1533+00 LT
RAMP OJ 1531+00-1537+00 LT
RAMP OK 1535+00-1541+00 LT
RAMP OL 1539+00-1545+00 LT
RAMP OM 1543+00-1549+00 LT
RAMP ON 1547+00-1553+00 LT
RAMP OO 1551+00-1557+00 LT
RAMP OP 1555+00-1561+00 LT
RAMP OQ 1559+00-1565+00 LT
RAMP OR 1563+00-1569+00 LT
RAMP OS 1567+00-1573+00 LT
RAMP OT 1571+00-1577+00 LT
RAMP OU 1575+00-1581+00 LT
RAMP OV 1579+00-1585+00 LT
RAMP OW 1583+00-1589+00 LT
RAMP OX 1587+00-1593+00 LT
RAMP OY 1591+00-1597+00 LT
RAMP OZ 1595+00-1601+00 LT
RAMP PA 1599+00-1605+00 LT
RAMP PB 1603+00-1609+00 LT
RAMP PC 1607+00-1613+00 LT
RAMP PD 1611+00-1617+00 LT
RAMP PE 1615+00-1621+00 LT
RAMP PF 1619+00-1625+00 LT
RAMP PG 1623+00-1629+00 LT
RAMP PH 1627+00-1633+00 LT
RAMP PI 1631+00-1637+00 LT
RAMP PJ 1635+00-1641+00 LT
RAMP PK 1639+00-1645+00 LT
RAMP PL 1643+00-1649+00 LT
RAMP PO 1647+00-1653+00 LT
RAMP PP 1651+00-1657+00 LT
RAMP PQ 1655+00-1661+00 LT
RAMP PR 1659+00-1665+00 LT
RAMP PS 1663+00-1669+00 LT
RAMP PT 1667+00-1673+00 LT
RAMP PU 1671+00-1677+00 LT
RAMP PV 1675+00-1681+00 LT
RAMP PW 1679+00-1685+00 LT
RAMP PX 1683+00-1689+00 LT
RAMP PY 1687+00-1693+00 LT
RAMP PZ 1691+00-1697+00 LT
RAMP QA 1695+00-1701+00 LT
RAMP QB 1699+00-1705+00 LT
RAMP QC 1703+00-1709+00 LT
RAMP QD 1707+00-1713+00 LT
RAMP QE 1711+00-1717+00 LT
RAMP QF 1715+00-1721+00 LT
RAMP QG 1719+00-1725+00 LT
RAMP QH 1723+00-1729+00 LT
RAMP QI 1727+00-1733+00 LT
RAMP QJ 1731+00-1737+00 LT
RAMP QK 1735+00-1741+00 LT
RAMP QL 1739+00-1745+00 LT
RAMP QM 1743+00-1749+00 LT
RAMP QN 1747+00-1753+00 LT
RAMP QO 1751+00-1757+00 LT
RAMP QP 1755+00-1761+00 LT
RAMP QQ

DEMOLITION ITEM
 US 5 41+50 RT #2
 US 5 41+15 RT #2
 US 5 40+00 LT #1
 US 5 41+00 LT #3
 U 41+25

CHAIN LINK FENCE 6' HIGH
 Ramp B 10+00-20+00 RT

DRILLING & BLASTING OF SOLID ROCK SUBGRADE
 Ramp B 10+00-19+50
 Ramp A 2+00-3+00
 Ramp A 4+50-12+00
 Ramp A 5+50-6+00

TOPSOIL ITEM
 US 5 34+50-39+00 LT
 US 5 34+50-39+00 RT

SLOPE EDGING
 Ramp A 8+38-12+04 RT
 Ramp B 10+08-20+35 LT
 RAMP B 20+35-20+85 LT

CONST DRIVED
 US 5 35+70 RT COMM
 US 5 36+35 RT COMM
 WINDSOR DRIVE STA 1+15
 US 5 36+77 LT
 US 5 31+90 RT
 WINDSOR DRIVE STA 3+40 LT

PROPERTY LINE FENCE
 US 5 38+75-42+25 RT

RAMP A PCC 3+00-6+25 RT

DRILLING & PRESPLITTING OF SOLID ROCK, ITEM 125
 RAMP B 11+00-17+25

RAMP "B" #2
 D 73' 54" 22' LT
 R 284.71
 T 214.8
 L 367.55
 E 1.16
 BANK 15.6' PER FT

RAMP "A" #5
 D 88' 21" 6" RT
 R 276.71
 T 270.00
 L 367.55
 E 1.92 33
 BANK 15.6' PER FT

RAMP "B" #3
 D 73' 54" 22' LT
 R 284.71
 T 214.8
 L 367.55
 E 1.16
 BANK 15.6' PER FT

RAMP "A" #4
 D 88' 21" 6" RT
 R 276.71
 T 270.00
 L 367.55
 E 1.92 33
 BANK 15.6' PER FT

RAMP "B" #1
 D 73' 54" 22' LT
 R 284.71
 T 214.8
 L 367.55
 E 1.16
 BANK 15.6' PER FT

RAMP "A" #3
 D 88' 21" 6" RT
 R 276.71
 T 270.00
 L 367.55
 E 1.92 33
 BANK 15.6' PER FT

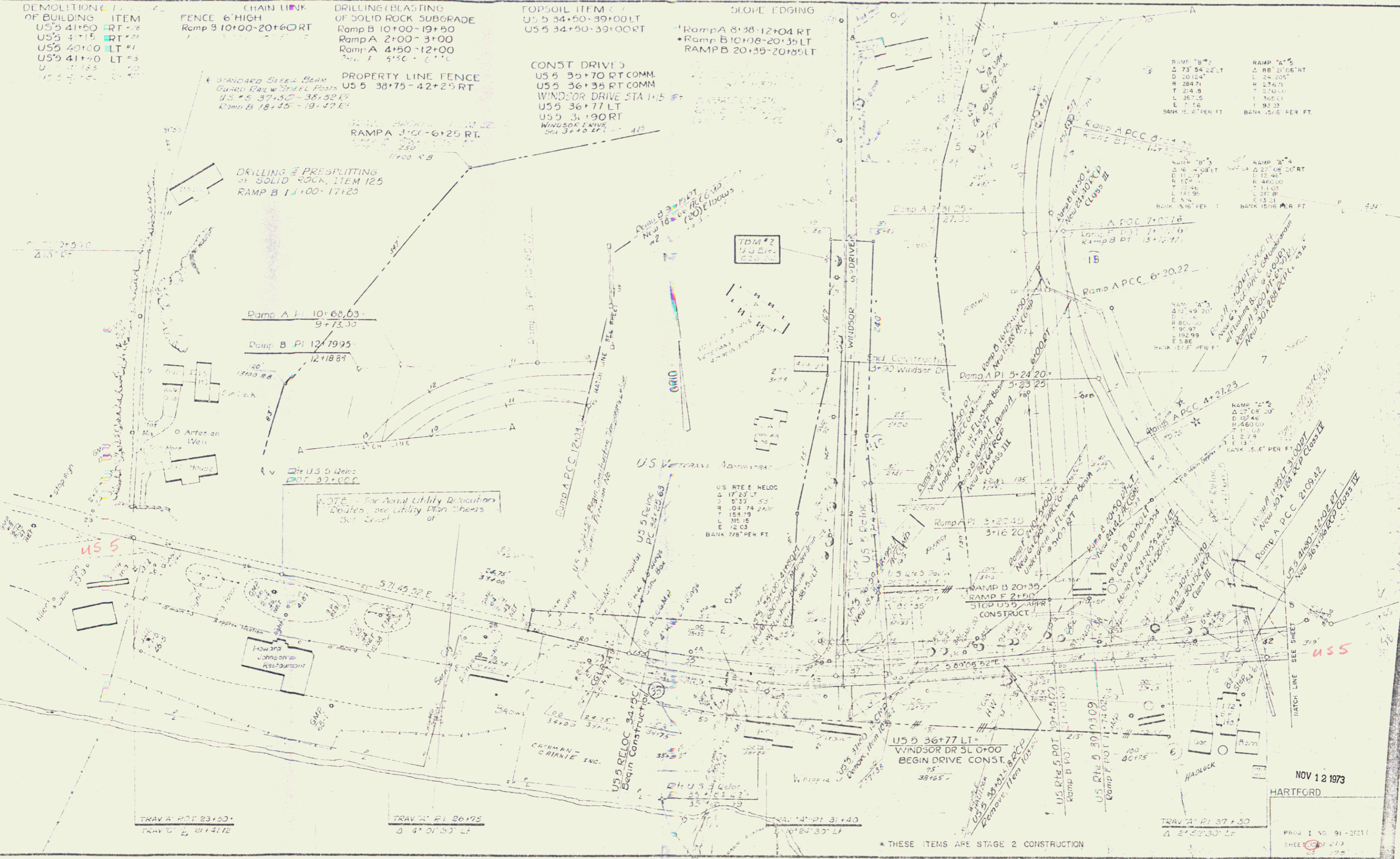
RAMP "B" #4
 D 73' 54" 22' LT
 R 284.71
 T 214.8
 L 367.55
 E 1.16
 BANK 15.6' PER FT

RAMP "A" #2
 D 88' 21" 6" RT
 R 276.71
 T 270.00
 L 367.55
 E 1.92 33
 BANK 15.6' PER FT

RAMP "B" #5
 D 73' 54" 22' LT
 R 284.71
 T 214.8
 L 367.55
 E 1.16
 BANK 15.6' PER FT

RAMP "A" #1
 D 88' 21" 6" RT
 R 276.71
 T 270.00
 L 367.55
 E 1.92 33
 BANK 15.6' PER FT

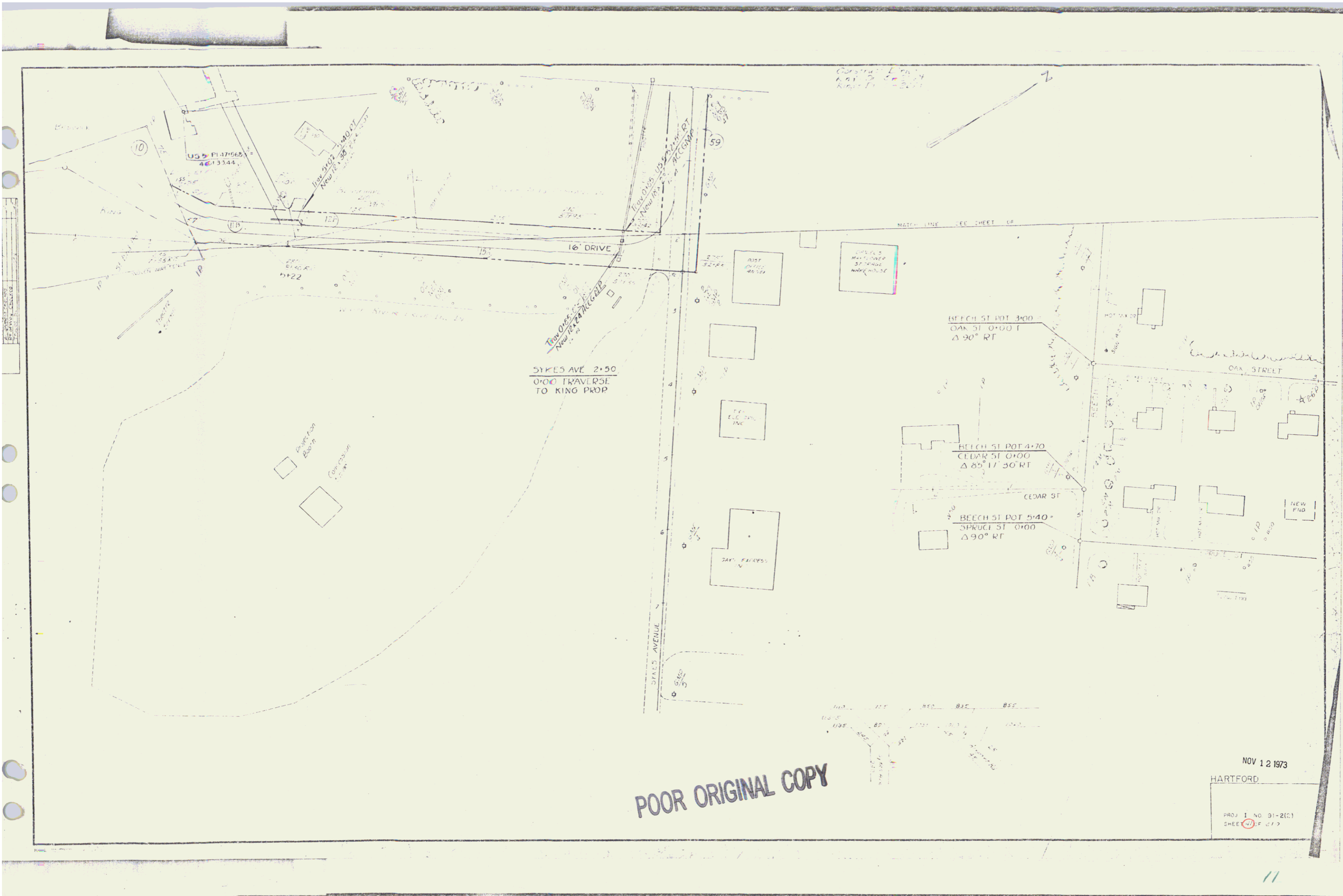
PLAN CHECKED
 APPROVED
 DATE

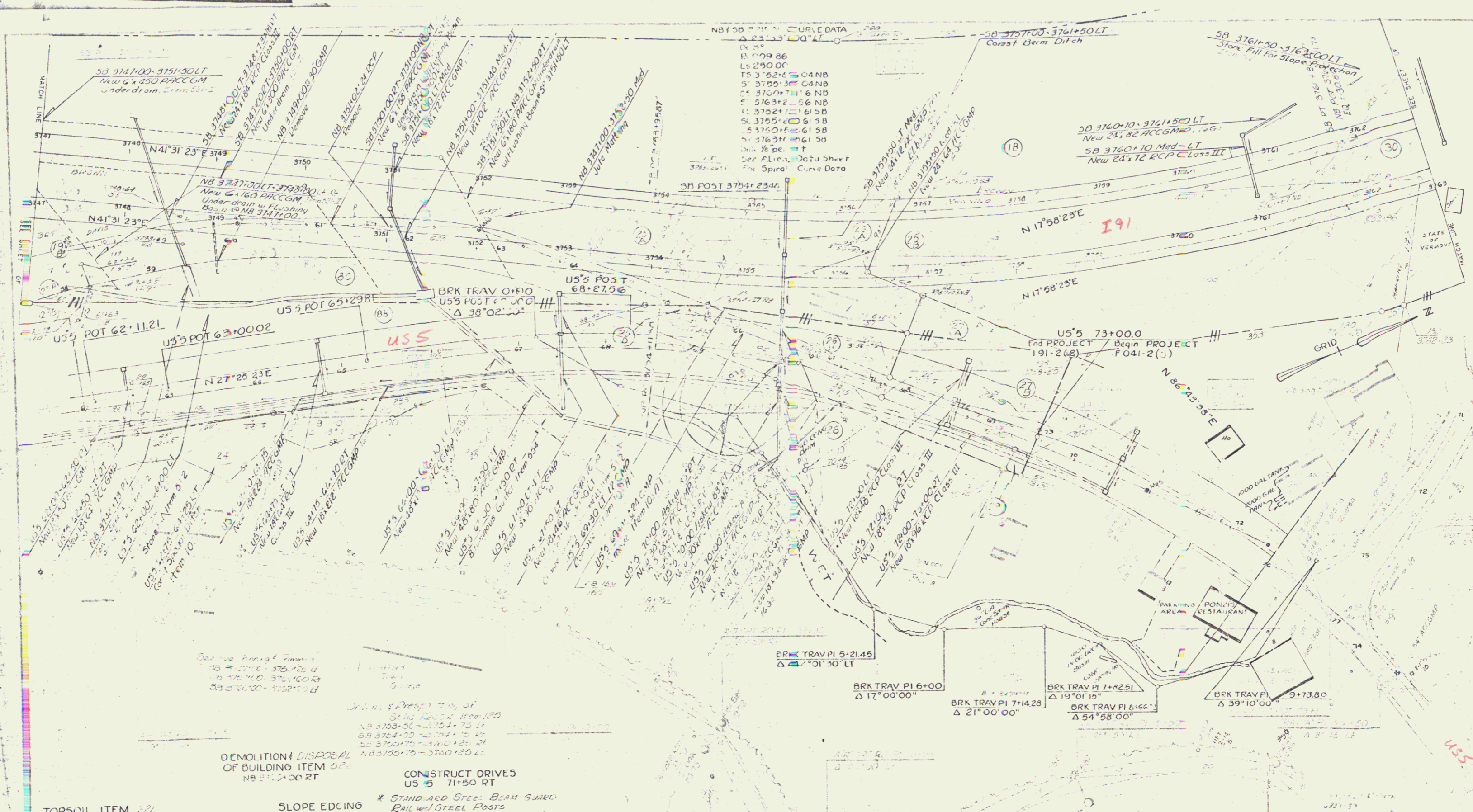


NOV 12 1973
 HARTFORD

PROJ NO 91-2031
 SHEET 219

* THESE ITEMS ARE STAGE 2 CONSTRUCTION





TOPSOIL ITEM
 1/2" 14+00-64+00 RT
 US 5 70+60-73+00 RT

VERTICAL CURB
 US 5 62+00-73+00 LT
 US 5 62+00-68+72 RT
 US 5 68+80-71+44 RT
 US 5 70+00-71+44 RT

5" CONC. SIDEWALK
 US 5 62+00-73+00 RT

SLOPE EDGING
 US 5 62+00-69+00 (Island)
 US 5 69+48-73+00 (Island)
 US 5 63+70-70+40 (Turnaround)

DRILLING & BLASTING OF SOLID ROCK SUBGRADE
 ITEM 115
 SB 3751+50-3761+50
 NB 3752+00-3761+00

CONSTRUCT DRIVES
 US 5 71+50 RT

*** STANDARD STEEL BEAM GUARD RAIL w/ STEEL POSTS**
 SB 3750+25-3751+27 LT
 NB 3751+15-3752+17 RT

CONSTRUCT TURNAROUND
 US 5 69+50 RT

THREE CABLE GUARD RAIL w/ STEEL POSTS
 ITEM 512
 * SB 3749+90-3752+62 RT
 * SB 3761+91-3763+14 LT
 * NB 3753+47-3756+09 RT
 * NB 3761+79-3763+01 RT
 * NB 3761+63-3763+00 RT

STANDARD STEEL BEAM GUARD RAIL
 US 5 66+21-67+00 LT
 US 5 66+25-67+04 RT

POOR ORIGINAL COPY
 CONTROL OF ACCESS COMPLETE ON THIS SHEET
 * THESE ITEMS ARE STAGE 2 CONSTRUCTION

PROPERTY LINE FENCE w/ STEEL POSTS ITEM
 NB 3747+00-3763+00 RT

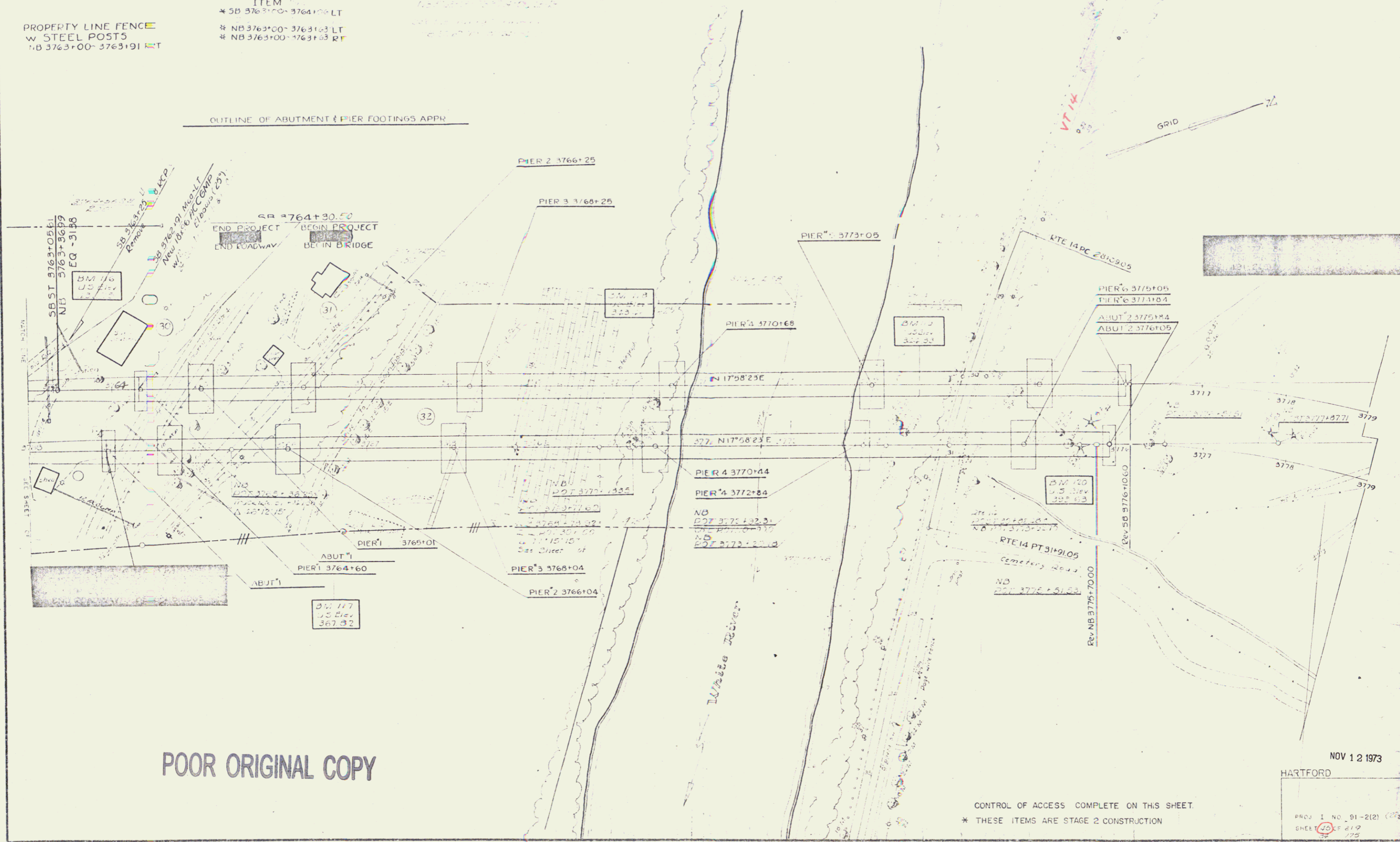
NOV 12 1973
 HARTFORD
 PROJ 1 91 2127
 SHEET 22 OF 29

PROPERTY LINE FENCE
w STEEL POSTS
NB 3763+00-3763+91

THREE CABLE GUARD
RAIL w STEEL POSTS
ITEM
* SB 3763+00-3764+00 LT
* NB 3763+00-3763+03 LT
* NB 3763+00-3763+03 RT

* STANDARD 4" x 4" x 1/2" M
GUARD RAIL
* NB 3763+00-3763+03 LT
* NB 3763+00-3763+03 RT

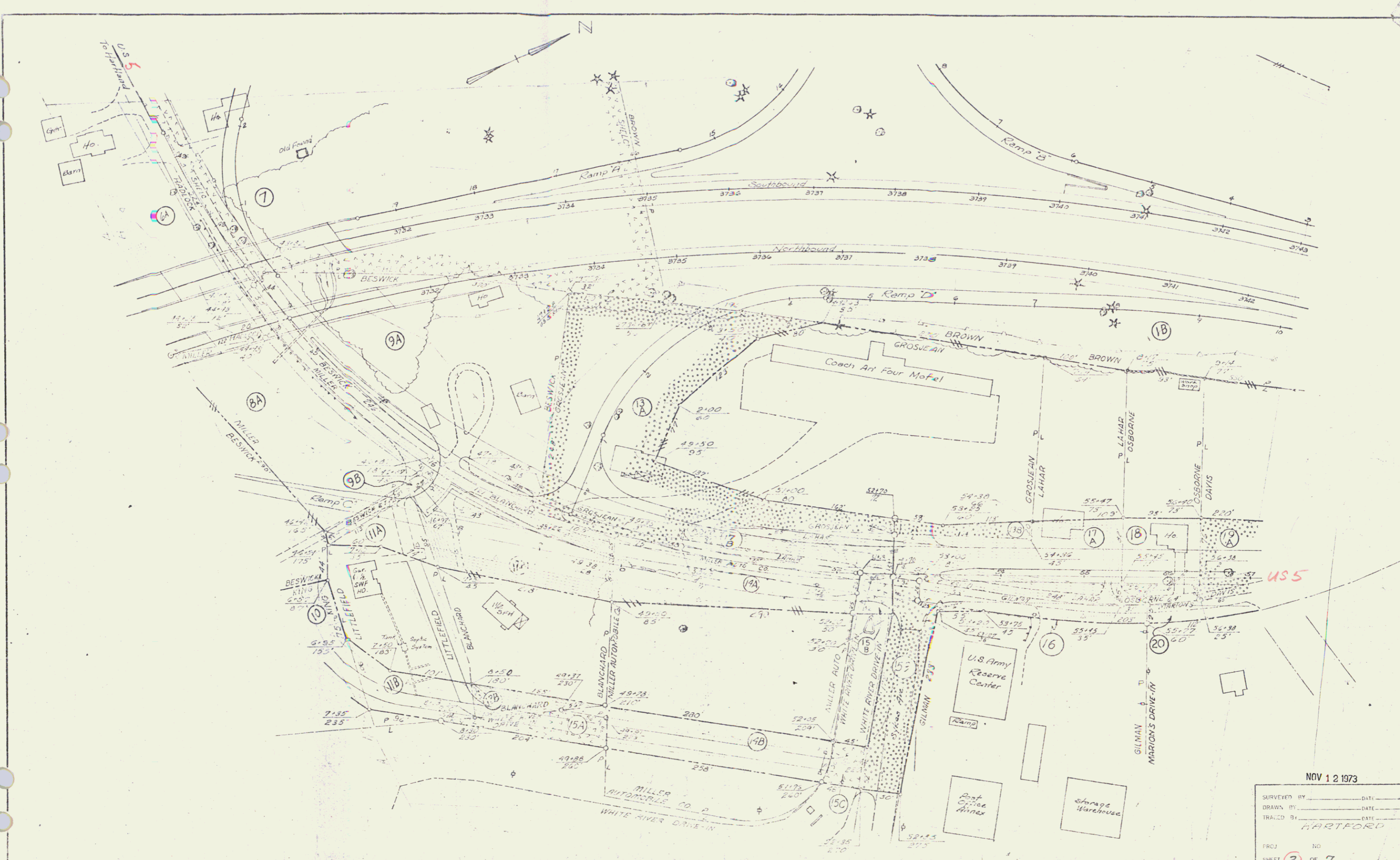
OUTLINE OF ABUTMENT & PIER FOOTINGS APPROX



POOR ORIGINAL COPY

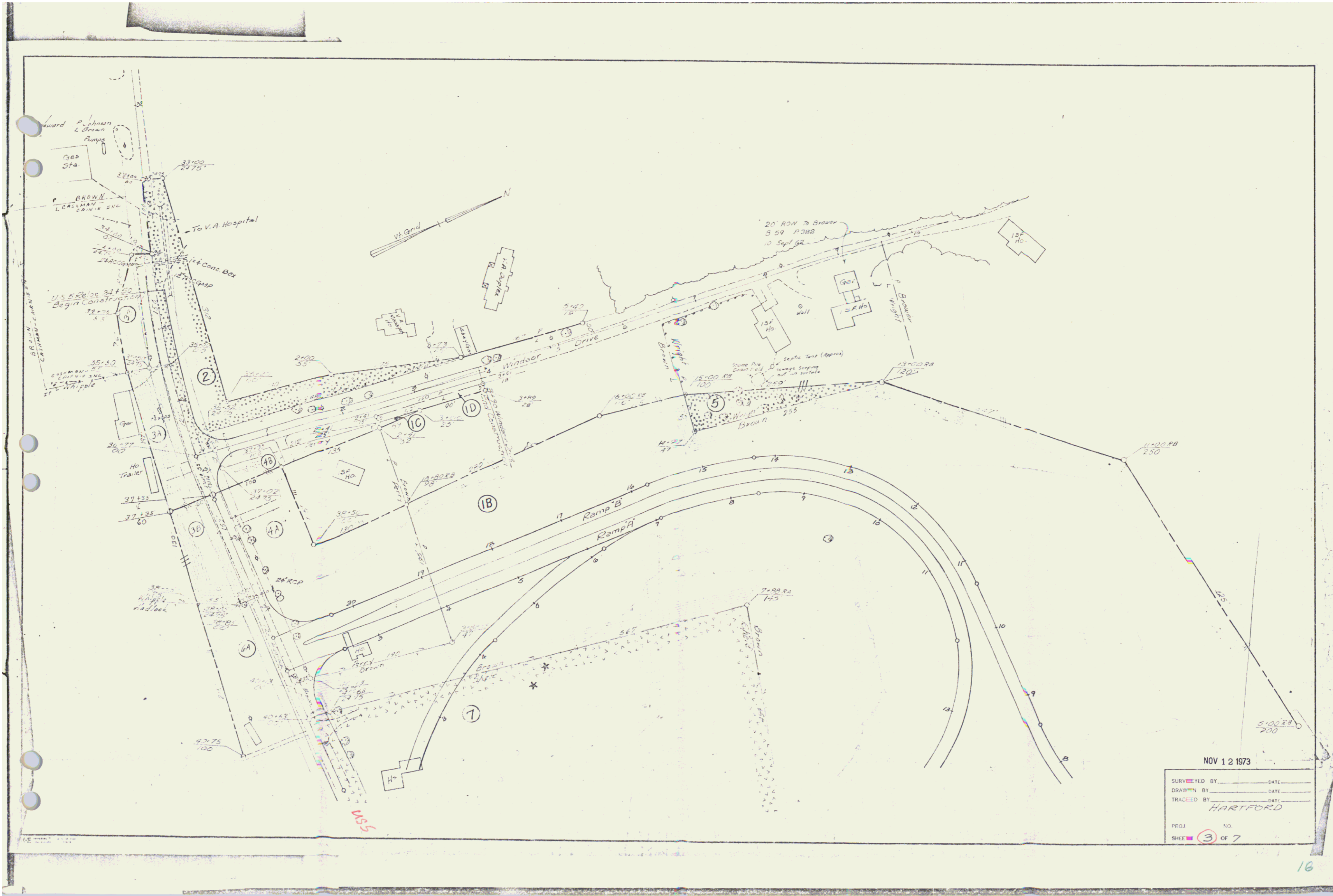
NOV 12 1973
HARTFORD
PROJ 1 NO. 91-2(2)
SHEET 20 OF 219

CONTROL OF ACCESS COMPLETE ON THIS SHEET.
* THESE ITEMS ARE STAGE 2 CONSTRUCTION



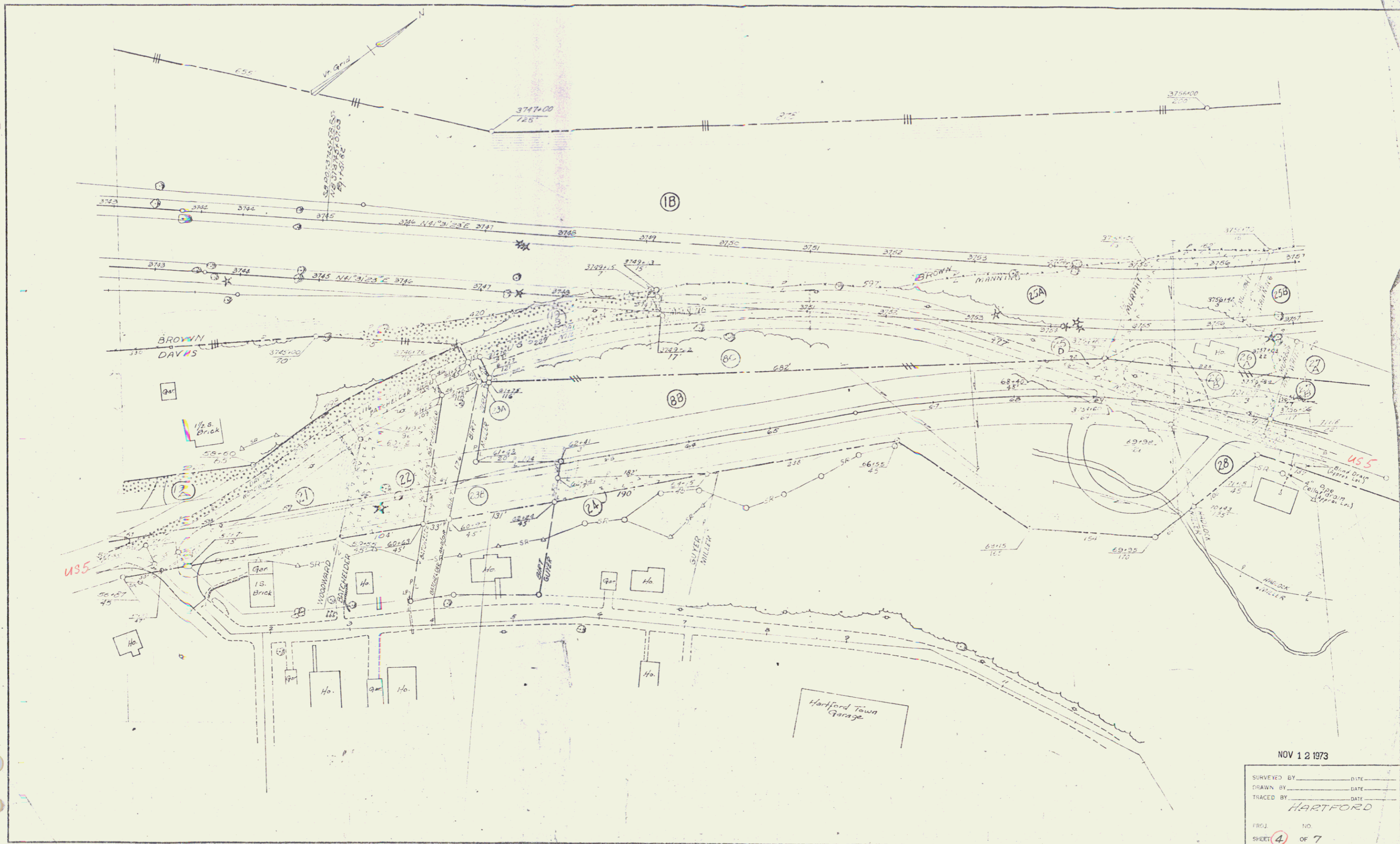
NOV 12 1973

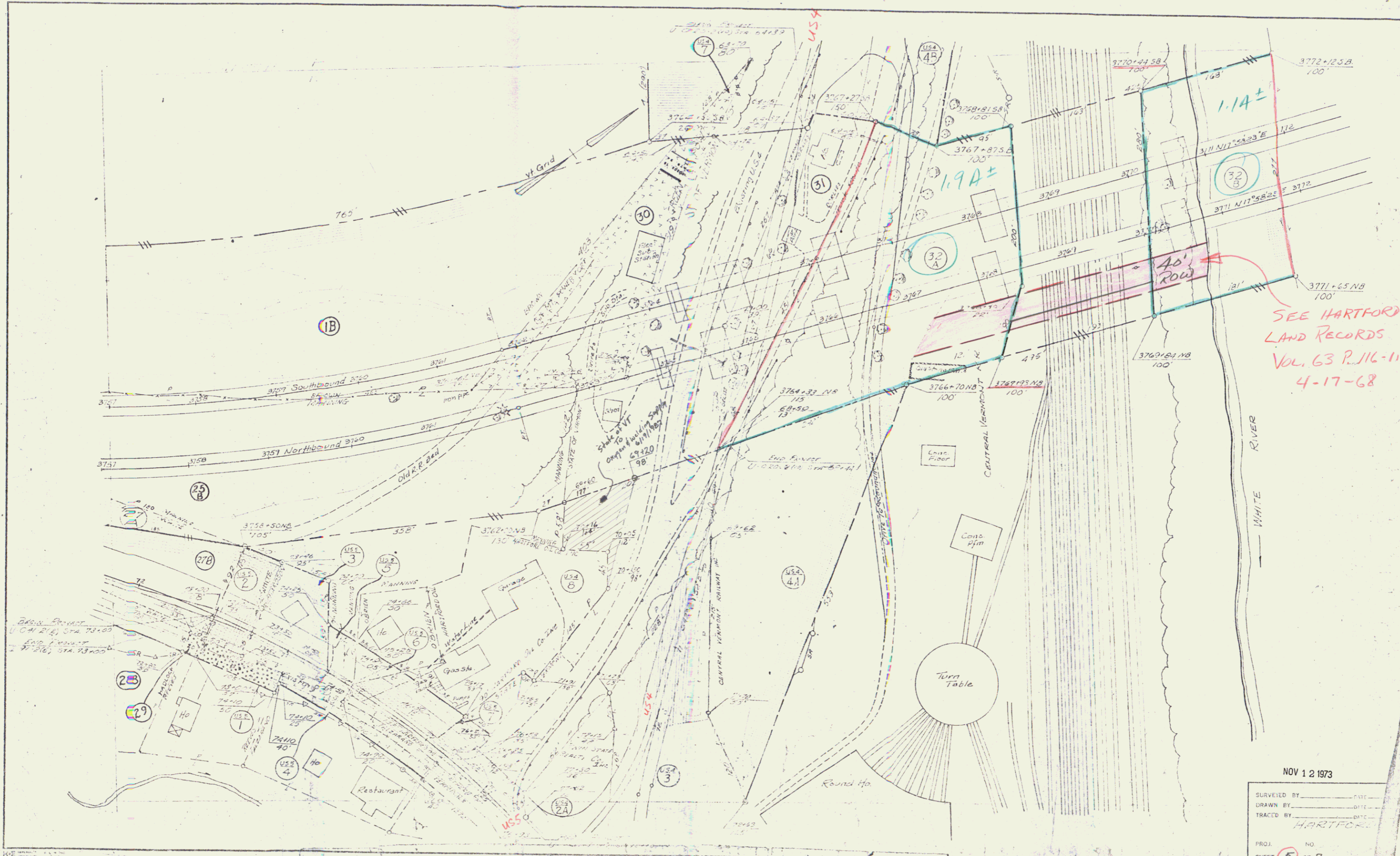
SURVEYED BY	DATE
DRAWN BY	DATE
TRACED BY	DATE
HARTFORD	
PROJ	NO
SHEET	OF
2	7



NOV 12 1973

SURVEYED BY _____	DATE _____
DRAWN BY _____	DATE _____
TRACED BY _____	DATE _____
HARTFORD	
PROJ. NO. _____	
SHEET 3 OF 7	





SEE HARTFORD
LAND RECORDS
VOL. 63 P. 116-117
4-17-68

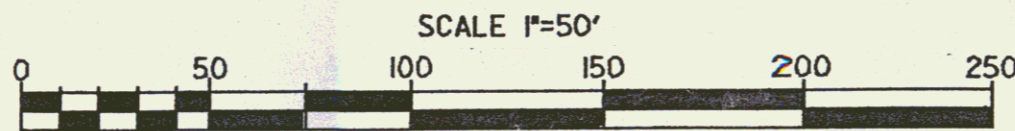
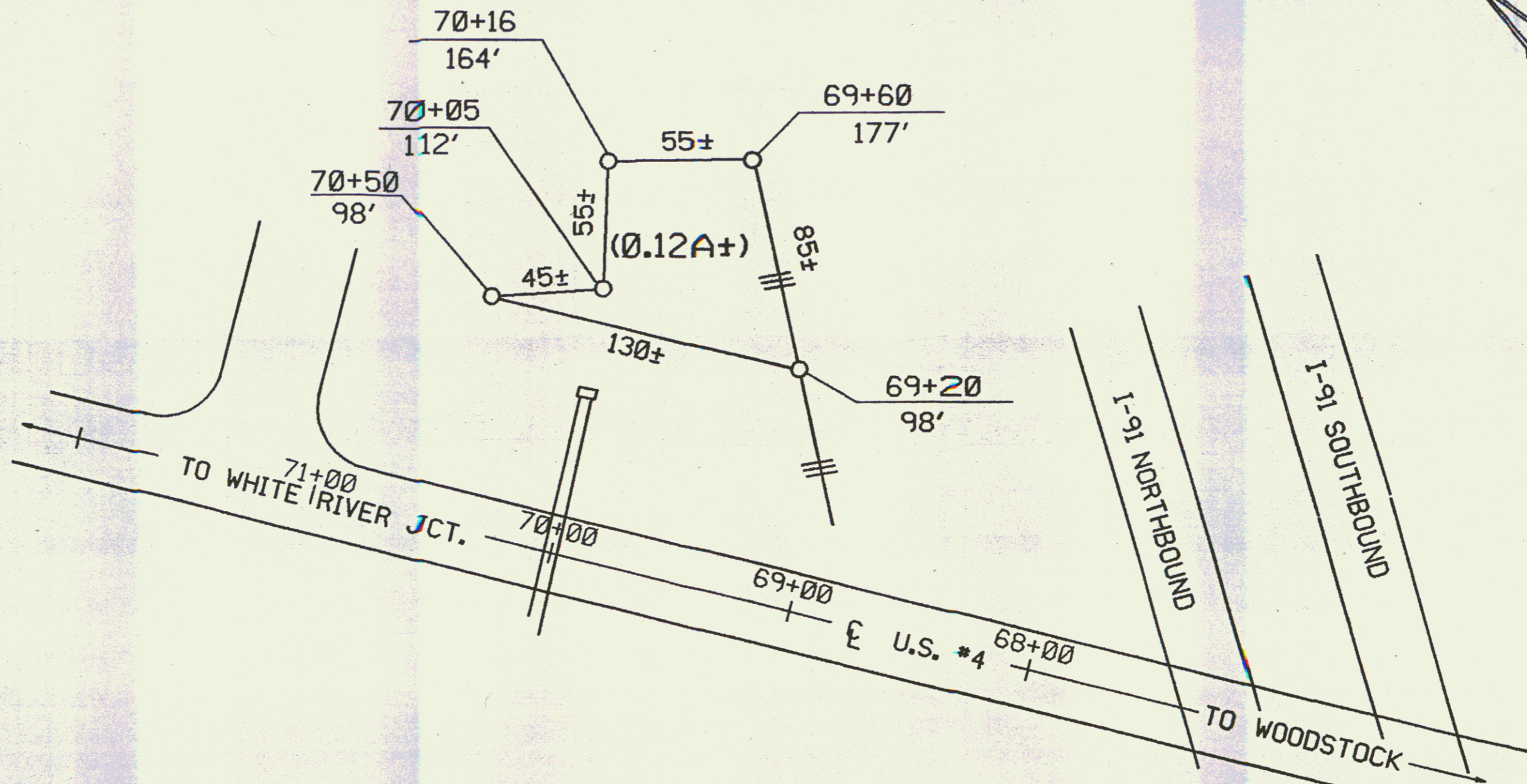
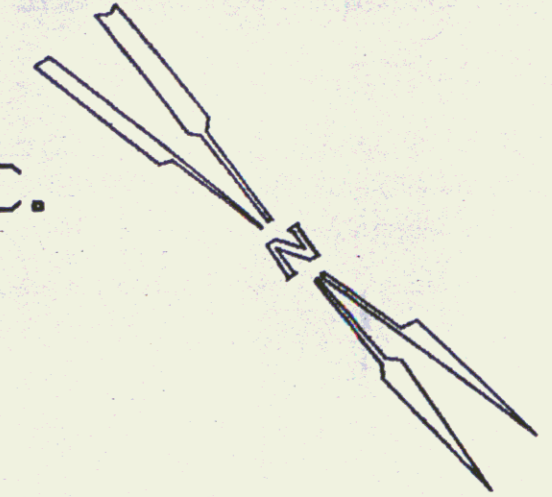
NOV 12 1973

SURVEYED BY	DATE
DRAWN BY	DATE
TRACED BY	DATE
HARTFORD	
PROJ.	NO.
SHEET	OF
5	7

THIS IS PART OF THE LAND ACQUIRED BY THE STATE OF VERMONT FROM THE WOODSTOCK RAILWAY COMPANY BY QUIT-CLAIM DEED DATED MAY 1, 1933, AND RECORDED IN BOOK 46, PAGE 560, OF HARTFORD LAND RECORDS.

STATE OF VERMONT
TO
OXYGEN AND WELDING SUPPLY CO., INC.

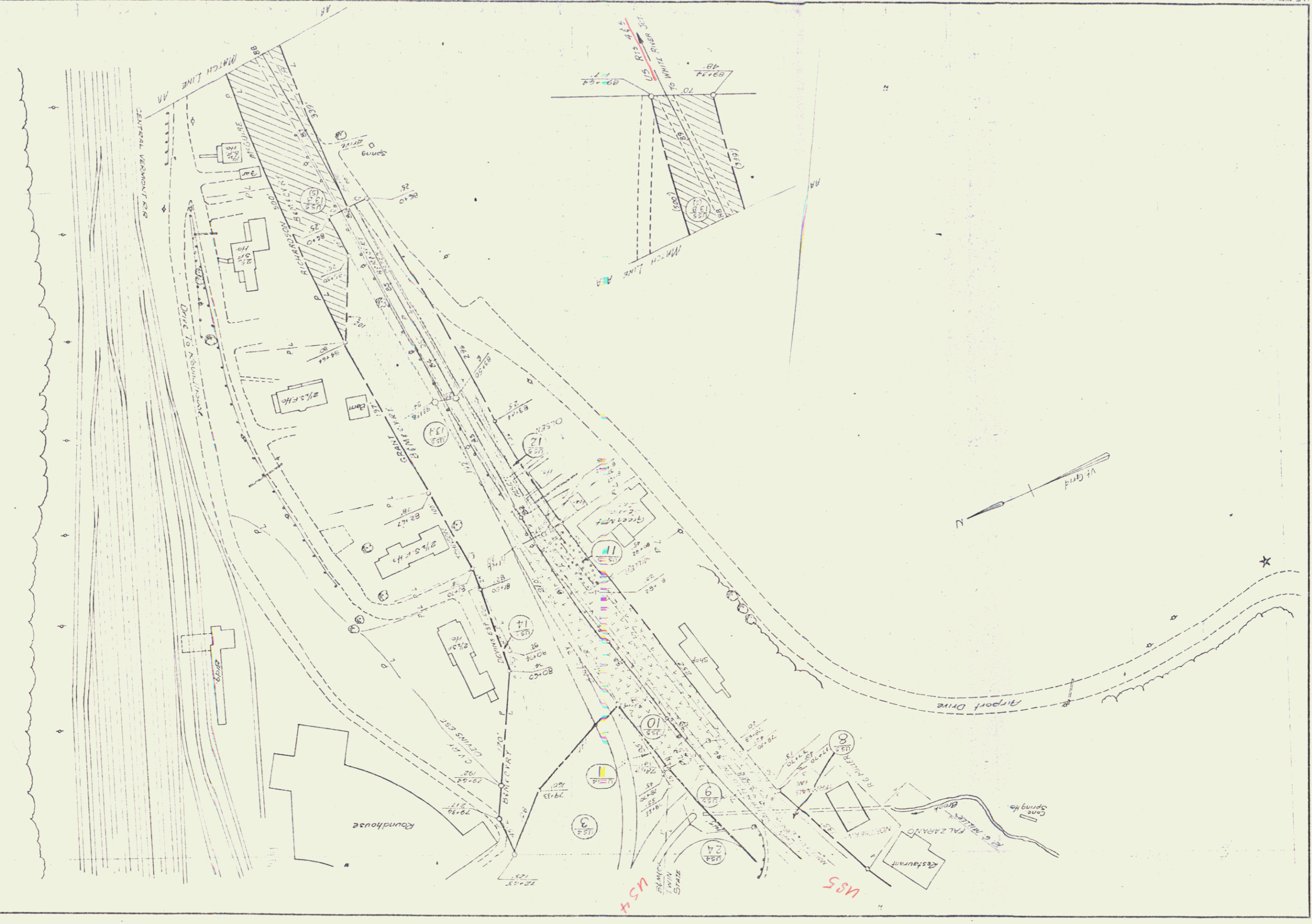
QCD dated 6/19/87 B.K. 128 Pg 625, 626

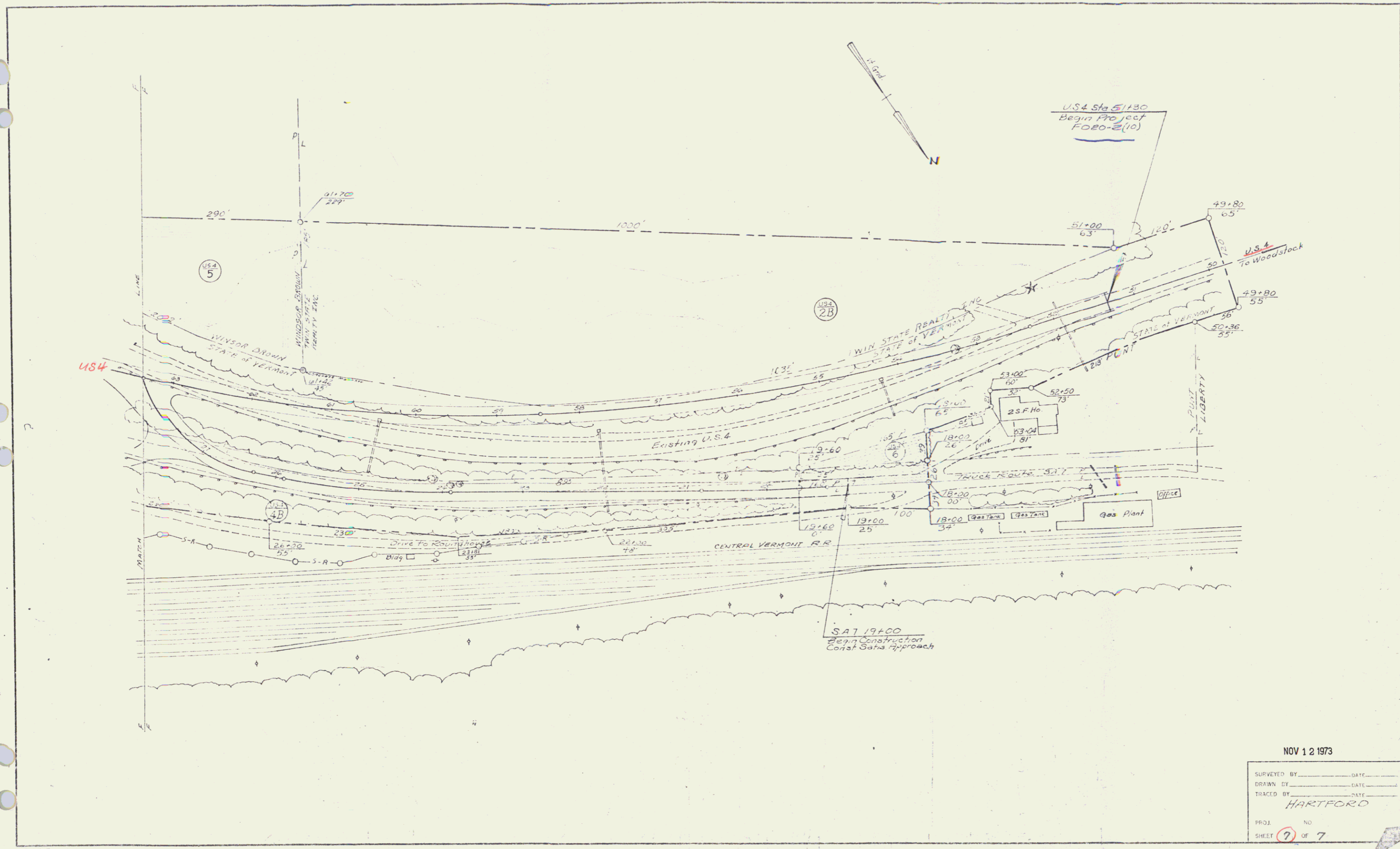


STATE OF VERMONT
AGENCY OF TRANSPORTATION
TOWN OF HARTFORD
RF: HARTFORD U 020-2(10)
APPROX. SCALE 1" = 50' DATE 4-27-87 DRAWN BY M.J.R.

SURVEYED BY _____ DATE _____
 DRAWN BY _____ DATE _____
 TRACED BY _____ DATE _____
 HARTFIELD
 SHEET 6 OF 7
 PROJ. NO. _____

NOV 12 1973





NOV 12 1973

SURVEYED BY _____	DATE _____
DRAWN BY _____	DATE _____
TRACED BY _____	DATE _____
HARTFORD	
PROJ NO _____	
SHEET (7) of 7	