

\* JUTE MATTING ITEM 523  
 Med. S.B. Rt. 2677+07 - 2681+07  
 Med. N.B. Lt. 2685+08 - 2691+08  
 Med. N.B. Lt. 2689+36 - 2693+58

RIP-RAP & BANK PROTECTION  
 MOD. FOR CULVERT ENDS, ITEM 524 MOD.  
 S.B. 2687+81 LT - K.B. 2687+33 RT

DRILLING & BLASTING OF SOLID ROCK SUBGRADE  
 ITEM 114  
 S.B. 2693+00 - 2696+00  
 N.B. 2693+50 - 2696+00

STEEL PILE FOR SLOPE  
 PROTECTION ITEM 521  
 N.B. 2686+00 - 2687+30

\* THREE CABLE GUARD RAIL  
 Item 523  
 Southbound 2686+87 - 2691+55 Lt.  
 Northbound 2681+00 - 2689+59 Rt.  
 2691+00 - 2696+00 Rt.  
 2692+75 - 2694+58 Rt.

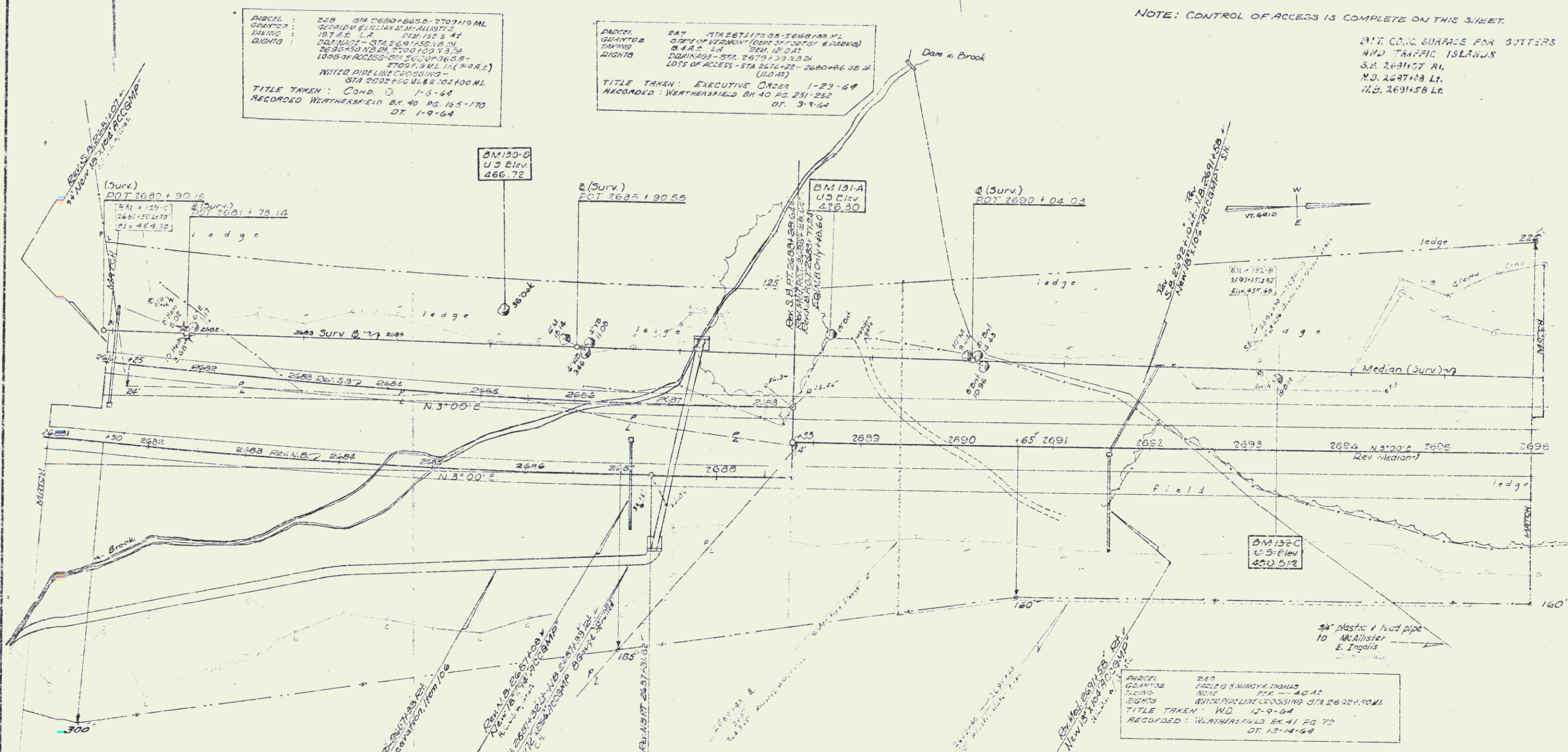
PROPERTY LINE FENCE  
 Item 523  
 S.B. 2681+00 - 2696+00  
 N.B. 2681+00 - 2696+00  
 Note: Prior to the commencement of construction construct Property Line Fence with Steel Posts, Item 523-B N.B. 2681+00 - 2686+00 Rt.

\* DENOTES STAGE 2 ITEMS

NOTE: CONTROL OF ACCESS IS COMPLETE ON THIS SHEET.

17% CONC. SURFACE FOR BUTTERS  
 AND TRAFFIC ISLANDS  
 S.D. 2681+07 RT.  
 N.D. 2687+08 LT.  
 N.B. 2691+58 LT.

|      |             |               |
|------|-------------|---------------|
| PLAN | SPRINGFIELD | WEATHERSFIELD |
| DATE | 12-9-64     | 12-9-64       |
| BY   | W. J. ...   | W. J. ...     |
| NO.  | ...         | ...           |



PARCEL 228 STA 2680+00 - 2703+10 ML  
 GRANITE  
 QUANTITY 187 cu. yd.  
 RIGHTS 187 cu. yd.  
 TITLE TAKEN: COND. D. 1-6-64  
 RECORDED: WEATHERSFIELD BK. 40 PG. 165-170  
 DT. 1-9-64

PARCEL 247 STA 2673+00 - 2688+55 ML  
 GRANITE  
 QUANTITY 842 cu. yd.  
 RIGHTS 842 cu. yd.  
 TITLE TAKEN: EXECUTIVE ORDER 1-29-64  
 RECORDED: WEATHERSFIELD BK. 40 PG. 251-252  
 DT. 3-9-64

PARCEL 249  
 GRANITE  
 QUANTITY 40 cu. yd.  
 RIGHTS 40 cu. yd.  
 TITLE TAKEN: W.D. 12-9-64  
 RECORDED: WEATHERSFIELD BK. 41 PG. 70  
 DT. 12-14-64

STAGE 2 CONSTRUCTION



SPRINGFIELD  
 WEATHERSFIELD  
 191-1228 (28)  
 Sheet 34 of 180 Sheets