

DRILLING AND BLASTING OF SOLID ROCK SUBGRADE
Item 114

17+50-25+00
NOTE: VT. RTE. 143 (Skitchewan Trail) IS TO BE BUILT IN ITS ENTIRETY DURING STAGE I CONSTRUCTION.

RUSSELL H. & ALICE H. GILBERT

Δ 36°59' 40" LT.
D 8°00' 00"
R 716.2
T 253.6
L 487.4
E 43.6
Bank 7% perf.

Excavation and Removal of Road Surface of Discontinued Roadways
E2+50-E6+50.

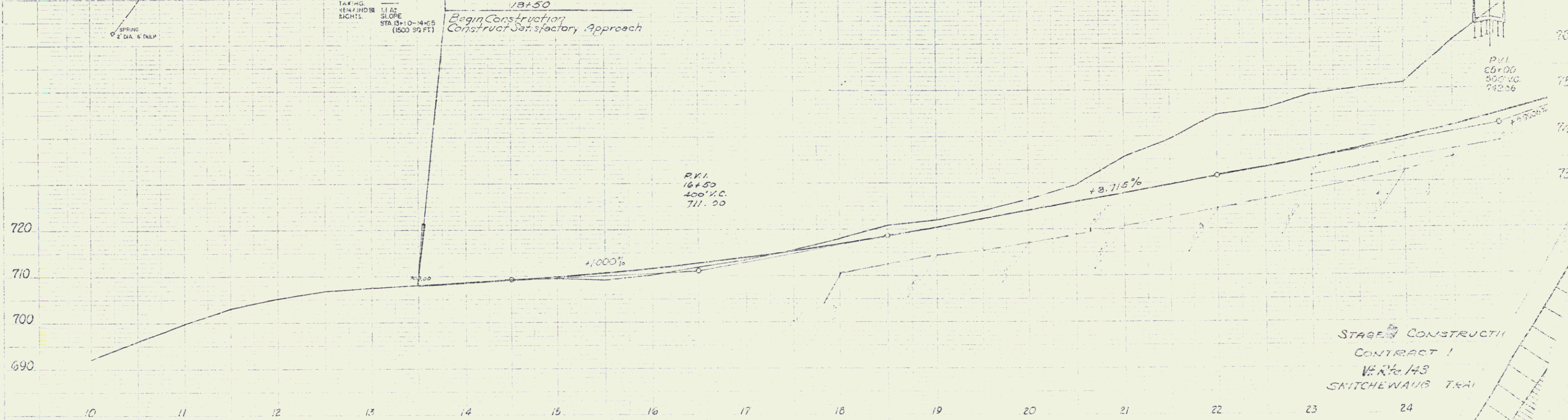
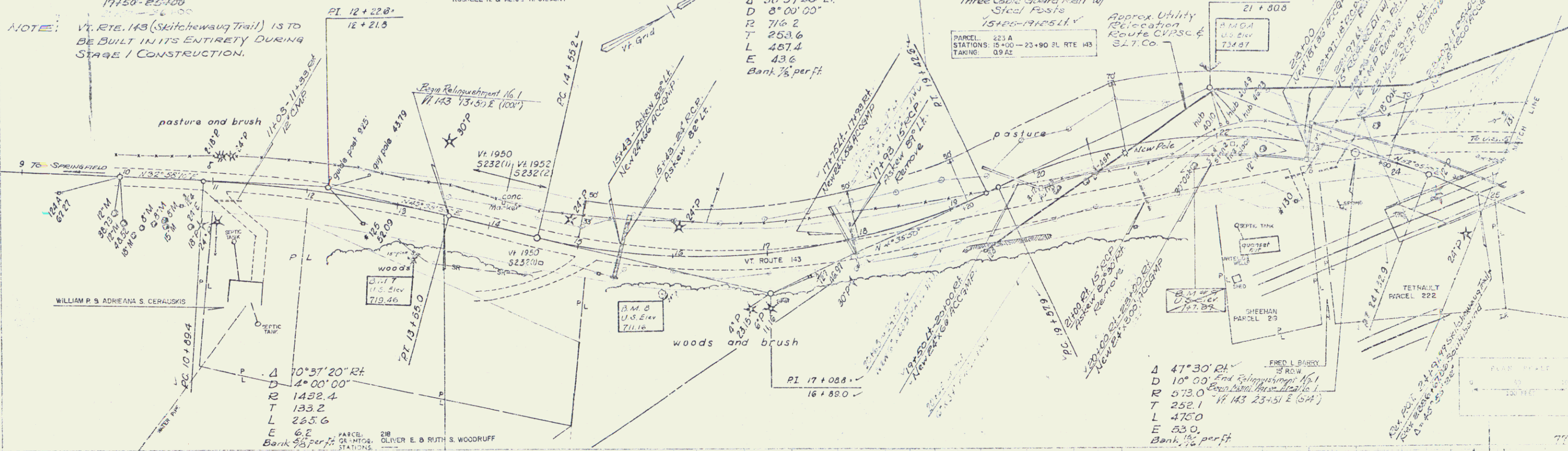
Standard Steel Beam Guard Rail with Steel Posts, Item 547-A
24'00" - 25'00"
25'15" - 25'00"
PI 22+10.0

Three Cable Guard Rail w/ Steel Posts
15+00-19+50 L.V.
PARCEL 223 A
STATIONS 15+00-23+90 PL RTE 143
TAKING 0.942

Approx. Utility Relocation Route CVRSC & S.L.T. Co.
21+80.8

Vertical Curve
Turner
Dunn
7'60"
IMPROVED TRACKS

Vertical Curve
Turner
Dunn
7'60"



STAGE I CONSTRUCTION
CONTRACT 1
VT. RTE. 143
SKITCHEWAN TRAIL
SPRINGFIELD - WILA
Project No. 42
Sheet No. 21

con
13