

* THREE CABLE GUARD RAIL
w/STEEL POSTS
NB 2365+43 - 2369+00 Rt
20

CLEARING & TRIMMING
ITEM #91 7+00
SB 2359+55 - 2365+60

DRILLING & BLASTING
ITEM #14 8
SB 2359+00 - 2366+50
NB 2361+00 - 2366+00

* These Items are Stage 2 Construction.

NOTE:-
Control of Access Complete on this Sheet.

NB	SB (Revised)
Δ 12° 48' 06" Lt	Δ 20° 51' 42" Lt
D 2'	D 2'
Q 2864.79	Q 2864.79
T 372.13	T 527.38
L 740.08	L 1043.10
E 24.07	E 48.16
bank 3/8 inch per foot	bank 3/8 inch per ft.

PARCEL 214 2358+35 SB-2370+47 NB

GRANTOR STATE OF VERMONT, DEPT. OF FISH & GAME

TAKING A ATKINSON-DAVIS CORP

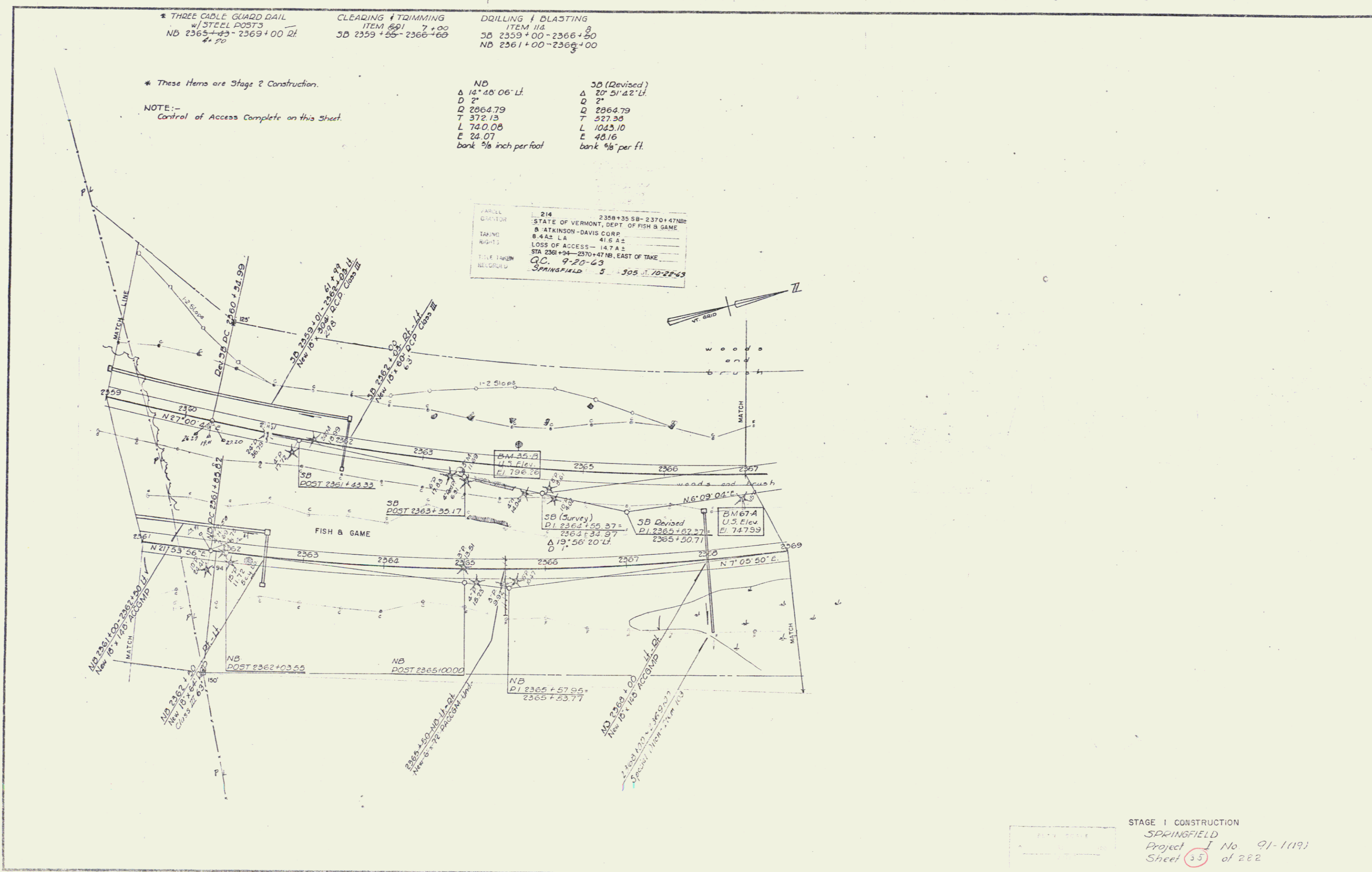
TAKEING 8.42± LA 41.6 A±

RECORDS LOSS OF ACCESS - 14.7 A±

TITLE TAKEN STA 2361+00 - 2370+47 NB, EAST OF TAKE

RECORDED C.C. 9-20-63

SPRINGFIELD 5 505 10-22-63



STAGE I CONSTRUCTION
SPRINGFIELD
Project No 91-119
Sheet 55 of 282