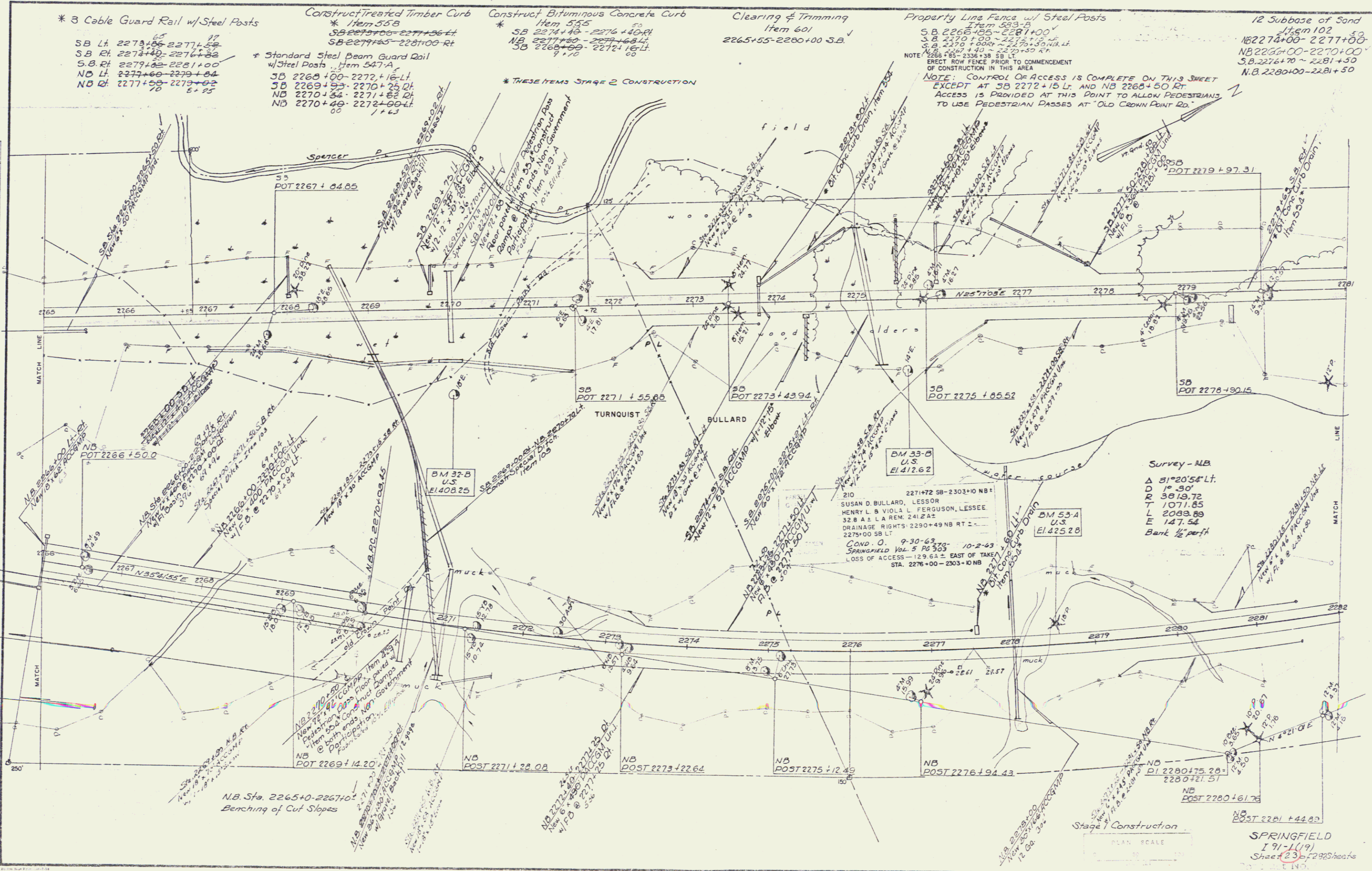


PLAN	DATE
Checked	11.98
Detailed	11.98
Traced	11.98
BY	
Annunzio	
Fraser	
KW	



* 3 Cable Guard Rail w/ Steel Posts
 SB Lt. 2273+00 ~ 2277+50
 S.B. Rt. 2274+00 ~ 2276+50
 S.B. Rt. 2279+00 ~ 2281+00
 NB Lt. 2274+00 ~ 2279+00
 NB Rt. 2277+00 ~ 2279+00

Construct Treated Timber Curb
 * Item 535
 SB 2273+00 ~ 2277+50 Lt.
 SB 2274+00 ~ 2276+50 Rt.

Construct Bituminous Concrete Curb
 * Item 535
 SB 2274+00 ~ 2276+50 Rt.
 NB 2277+00 ~ 2279+00 Lt.
 SB 2280+00 ~ 2281+50 Lt.

Clearing & Trimming
 Item 601
 2265+55 ~ 2280+00 S.B.

Property Line Fence w/ Steel Posts
 Item 533-A
 S.B. 2266+00 ~ 2281+00
 S.B. 2270+00 ~ 2276+50 Lt.
 S.B. 2270+00 ~ 2276+50 Rt.
 NB 2274+00 ~ 2279+00 Lt.
 NB 2274+00 ~ 2279+00 Rt.

12 Subbase of Sand
 Item 102
 NB 2274+00 ~ 2277+00
 NB 2280+00 ~ 2281+00
 S.B. 2276+00 ~ 2281+50
 N.B. 2280+00 ~ 2281+50

NOTE: CONTROL OF ACCESS IS COMPLETE ON THIS SHEET EXCEPT AT SB 2272+15 Lt. AND NB 2280+50 Rt. ACCESS IS PROVIDED AT THIS POINT TO ALLOW PEDESTRIANS TO USE PEDESTRIAN PASSES AT "OLD CROWN POINT RD."

210
 227+72 SB-2303+0 NB
 SUSAN D. BULLARD, LESSOR
 HENRY L. & VIOLA L. FERGUSON, LESSEE
 32.8 A ± L.A. REM. 241.2 A ±
 DRAINAGE RIGHTS: 2290+49 NB RT 2-
 2279+00 SB LT.
 COND. O. 9-30-63, 78-10-2-63
 SPRINGFIELD VOL. 5 PG 503
 LOSS OF ACCESS - 23.6 A ± EAST OF TAKE-
 STA. 2276+00 - 2303+0 NB

Survey - NB
 Δ 51°20'54" Lt.
 D 10' 50"
 R 3818.72
 T 1071.85
 L 2089.89
 E 147.54
 Bank 1/2 perf

SPRINGFIELD
 I 91-1(19)
 Sheet 23 of 29 Sheets
 C.T.O.