

GRANITE SLOPE EDGING, ITEM 556-A
 STA 25+25 TO STA 25+27 LT - US 5-B V.T. 11-
 CHANNEL EXCAVATION, ITEM 106
 STA 25+25 TO STA 25+65 RT V
 BITUMINOUS CONCRETE SURFACE FOR
 GUTTERS & TRAFFIC ISLANDS
 35+00-17+29 RT.
 D 12+82-14+50 LT.
 D 2+50 RT.
 D 4+00 RT.
 D 6+50 RT.
 D 7+25-14+50 RT.
 D 7+25 RT.
 C 14+25
 C 6+00 RT.

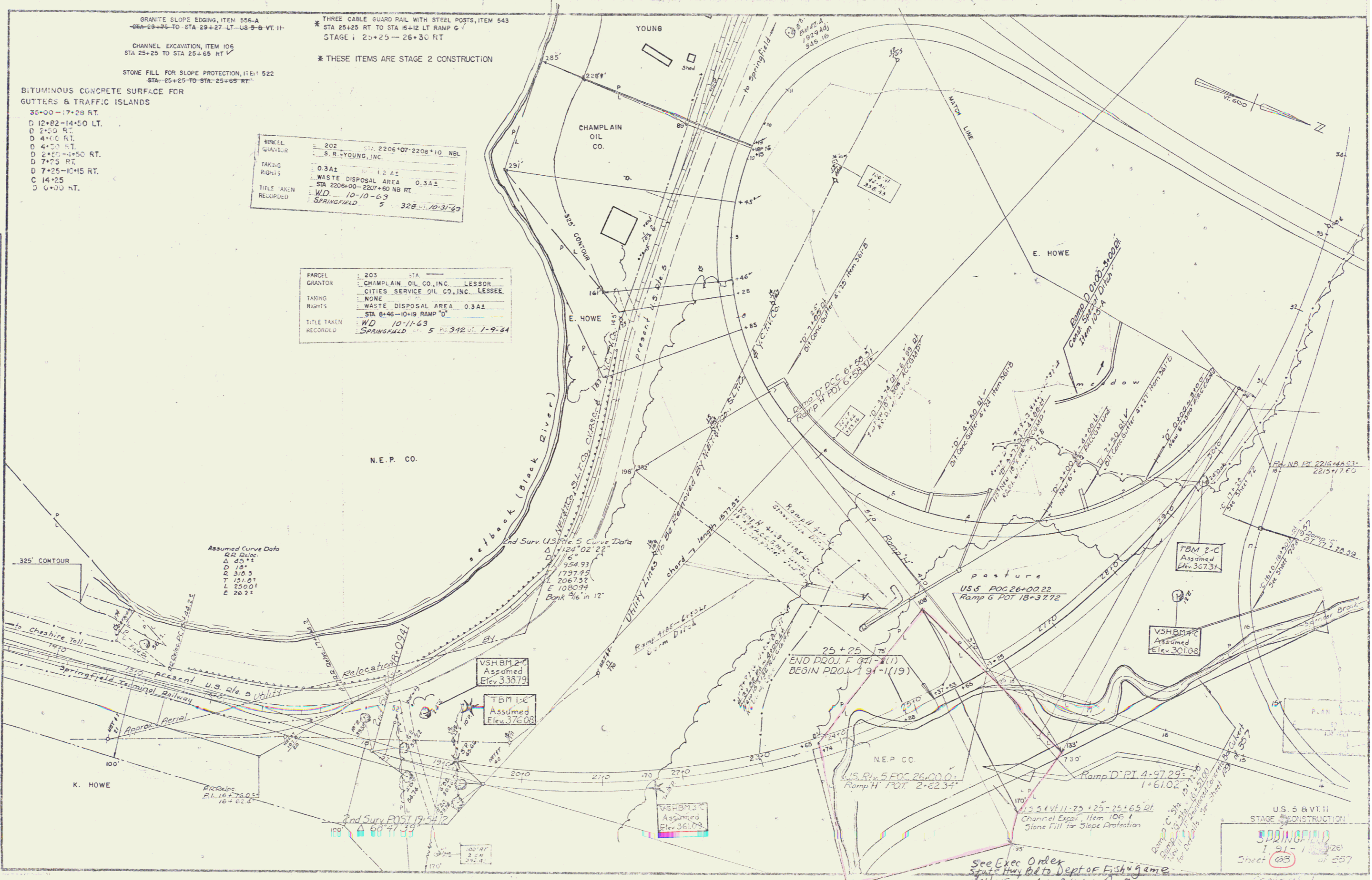
* THREE CABLE GUARD RAIL WITH STEEL POSTS, ITEM 543
 STA 25+25 RT TO STA 15+12 LT RAMP C /
 STAGE 1 25+25 - 26+30 RT
 * THESE ITEMS ARE STAGE 2 CONSTRUCTION

STONE FILL FOR SLOPE PROTECTION, ITEM 522
 STA- 25+25 TO STA- 25+65 RT.

PLAN	BY	DATE
Surveyed	D. Brown	7/24/61
Plotted		
Traced		

PARCEL	202	STA.	2206+07-2208+10	NBL
GRANTOR	S. R. YOUNG, INC.			
TAKING RIGHTS	0.3 A 2			
TITLE TAKEN RECORDED	W.D. 10-10-63			
	SPRINGFIELD 5 328 10-31-63			

PARCEL	203	STA.	
GRANTOR	CHAMPLAIN OIL CO., INC. LESSOR		
TAKING RIGHTS	CITIES SERVICE OIL CO., INC. LESSEE		
TITLE TAKEN RECORDED	W.D. 10-11-63		
	SPRINGFIELD 5 312 1-9-64		



Assumed Curve Data
 R.D. Date: 12-25-61
 D: 15°
 R: 310.3
 T: 121.0 ft
 L: 250.0 ft
 E: 26.2 ft

VSHBM 2-C
 Assumed
 Elev. 337.31

TBM 1-C
 Assumed
 Elev. 376.08

VSHBM 3-C
 Assumed
 Elev. 361.09

VSHBM 4-C
 Assumed
 Elev. 301.08

U.S. 5 & V.T. 11
 STAGE 2 CONSTRUCTION
 SPRINGFIELD
 7-91-1-1-61
 Sheet 63 of 537

See Exec Order
 State Hwy Bd to Dept of Fish & Game
 1465 19A L BK 61 Pg 74