

STANDARD STEEL BEAM  
C/4x3 RAIL W/ STEEL POSTS  
2052+00 NB LT.

\* THREE CABLE GUARD RAIL  
W/ STEEL POSTS  
2052+00-2063+06 SB LT.  
2052+00-2062+93 NB RT.  
2063+06

PROPERTY LINE FENCE  
2062+00-2068+00 NB RT.  
53

STONE FILL FOR SLOPE PROTECTION  
2059+50 - 2060+12.5 RT (15% OF SLOPE)

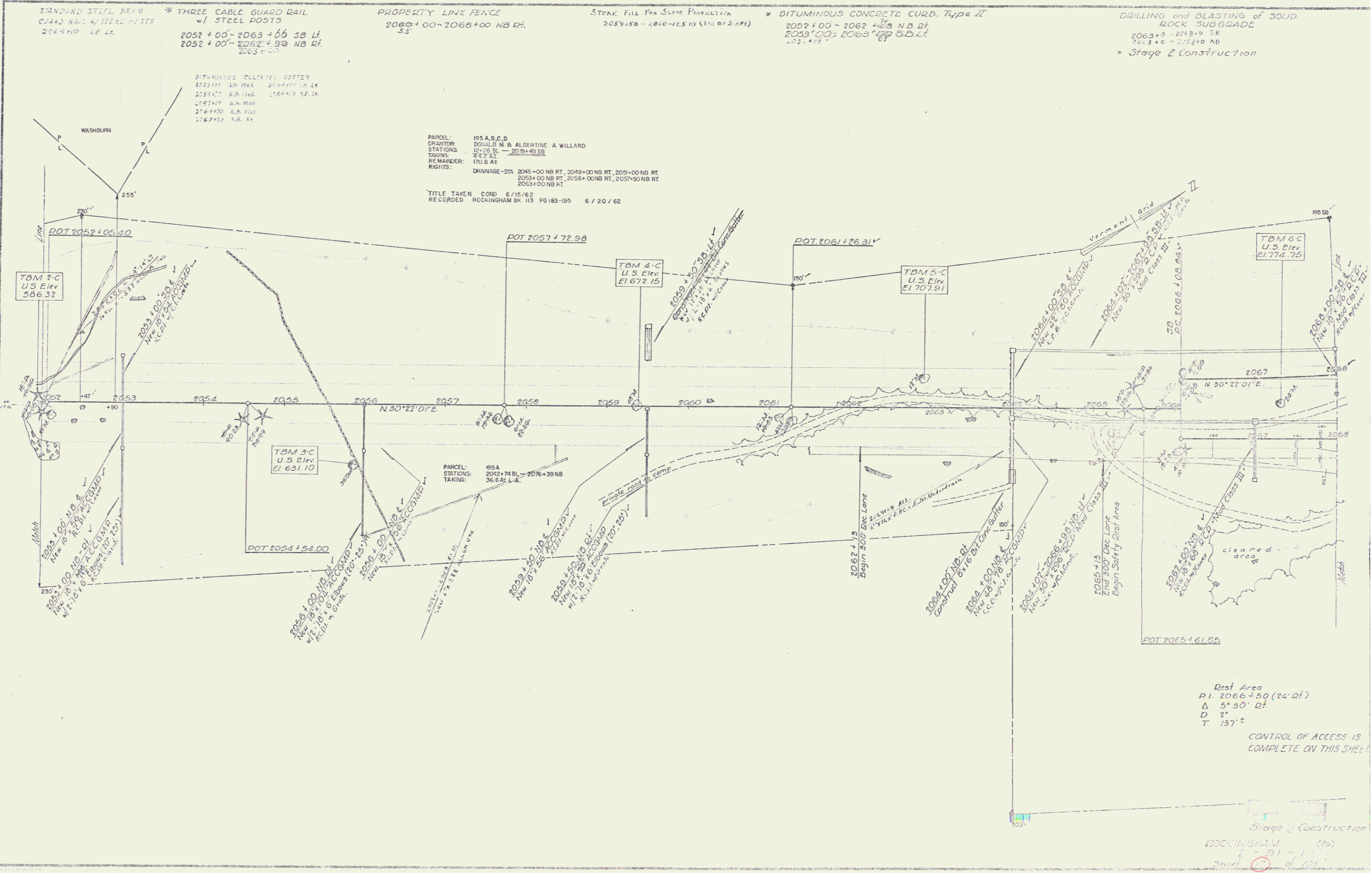
\* BITUMINOUS CONCRETE CURB, Type II  
2057+00 - 2062+06 NB RT.  
2057+00 - 2063+06 SB LT.  
2057+06

DRILLING and BLASTING of SOLID  
ROCK SUBGRADE  
2063+0 - 2068+10 SB  
2063+0 - 2068+10 NB  
\* Stage 2 Construction

BITUMINOUS CEMENT HOTTER  
253100 LB. MEI. 2044+00 RT. LT.  
253400 LB. MEI. 2064+00 SB. LT.  
205700 LB. MEI.  
2064100 LB. MEI.  
2067250 NB. RT.

PARCEL: 195 A,B,C,D  
CREATOR: DONALD M.B. ALBERTINE A WILLARD  
STATIONS: 12+56 SL - 3079+42 SB  
TAKING: 743' 23"  
REMAINDER: 170.8 AT  
RIGHTS: DRAINAGE STA 2046+00 NB RT, 2049+00 NB RT, 2051+00 NB RT, 2053+00 NB RT, 2056+00 NB RT, 2057+50 NB RT, 2058+00 NB RT.  
TITLE TAKEN COND. 6/15/62  
RECORDED ROCKINGHAM BK 113 PG 183-195 6/20/62

PLAN	DATE	BY
REVISED	DATE	BY
NO. 1	10/1/62	W.S.
NO. 2	10/1/62	W.S.
NO. 3	10/1/62	W.S.



Rest Area  
P.I. 2066+50 (24' RT.)  
Δ 5' 30" RT.  
O 2"  
T 137°  
CONTROL OF ACCESS IS  
COMPLETE ON THIS SHEET

Stage 2 Construction  
ROCKINGHAM (26)  
I-91-11-11  
Sheet 21 of 22  
DIDGE LINE