

*THREE CABLE GUARD RAIL
w/ STEEL POSTS
SB
1974 + 96 - 1979 + 50.21
NB
1975 + 86 - 1981 + 24.21

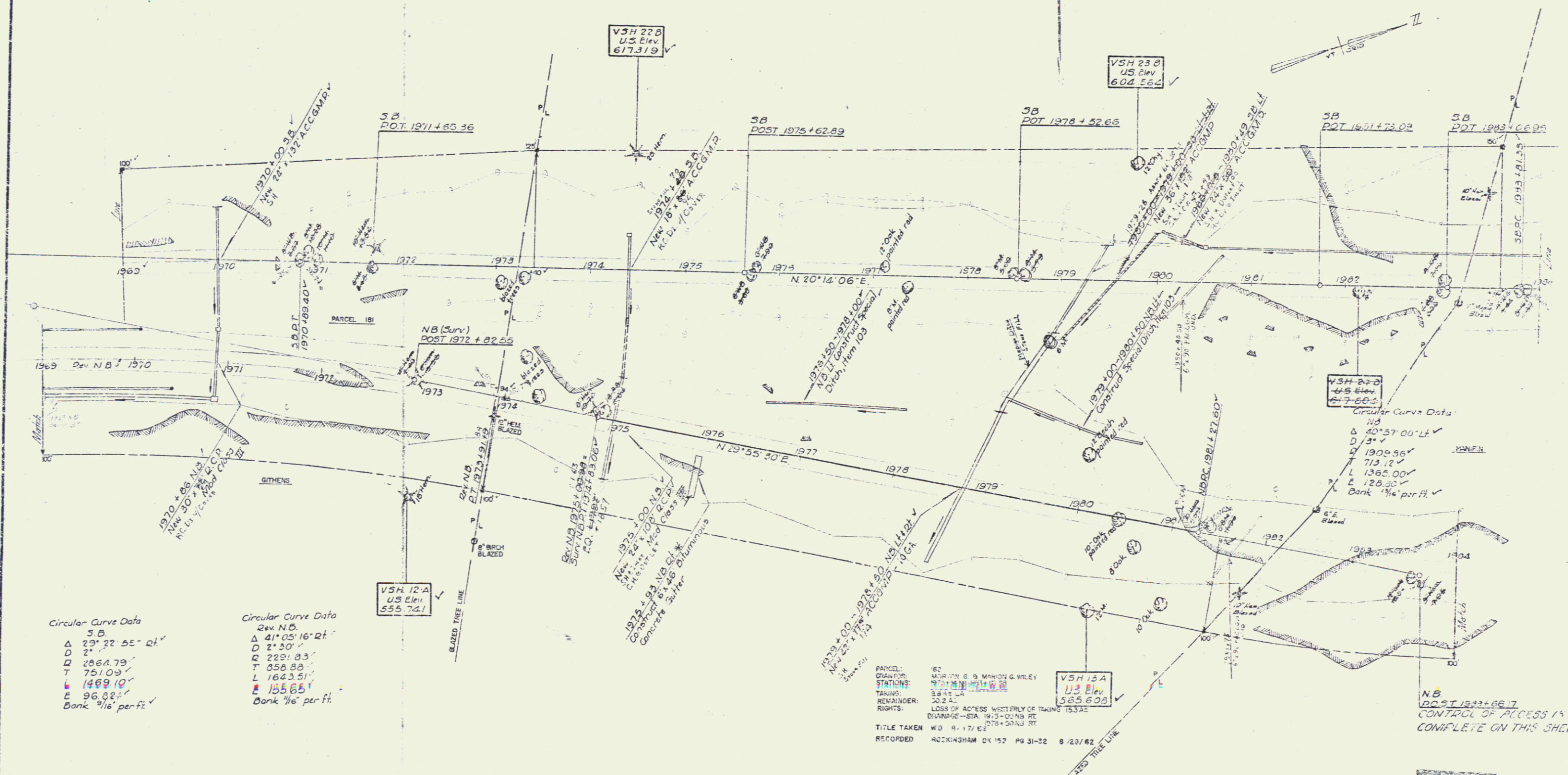
* BITUMINOUS CONCRETE CURB
1974 + 50 - 1979 + 54 NB RT

SPECIAL DITCHES
1976 + 50 - 1978 + 10 NB RT
1979 + 00 - 1980 + 50 NB RT

BITUMINOUS CONCRETE GUTTER
1979 + 00 NB RT

DRILLING & BLASTING OF SOLID ROCK
SUBGRADE
SB
1971 + 00 - 1973 + 80
1980 + 00 - 1984 + 00
NB
1974 + 96 - 1978 + 00
1984 + 00 - 1984 + 00
1984 + 20

* Stage 2 Construction



Circular Curve Data
SB
Δ 29° 22' 55" Rt.
D 2'
D 2066.79'
T 751.09'
E 1469.10'
Bank 1/16" per ft.

Circular Curve Data
Rev. N.D.
Δ 41° 05' 16" Rt.
D 2' 30"
D 2281.83'
T 856.88'
L 1643.51'
Bank 1/16" per ft.

VSH 12A
US Elev
555.741

VSH 22B
US Elev
617.319

VSH 23B
US Elev
604.564

VSH 27B
US Elev
617.602

VSH 13A
US Elev
585.608

PARCEL: 182
GRANTOR: MURPHY G. & MURPHY G. WILEY
STATIONS: 1974 + 50 TO 1979 + 54
TRAVEL: 38.44' L
REMAINDER: 20.2' L
RIGHTS: LOSS OF ADDRESS WESTERLY OF TAKING 15.33E
CORRECTION - STA. 1973 + 00 NB RT
TITLE TAKEN: WD. 8. 17. 62
RECORDED: ROCKINGHAM DE 152 PG 31-32 8/23/62

Circular Curve Data
NB
Δ 40° 57' 00" Lt.
D 3' 3"
D 1900.96'
T 713.12'
L 1365.00'
Bank 1/16" per ft.

NB
POST 1981 + 66.7
CONTROL OF ACCESS IS
COMPLETE ON THIS SHEET

Stage 2 Construction

ROCKINGHAM
I-91-1(18)125
Surveyed - James J. Smith, '62
Plotted - Legend - Clark, W.D. '60
Sheet 17 of 107