

NOTE
In Order to Obtain Stable Slopes of the Terminal Point of the Contract, Contiguous Slopes shall be covered beyond the End of the Contract as Directed by the Engineer. The material used shall be composed of Granular Borrow, Item 102-A, extending away from Sta. 1785+00 on a 1-4 slope.

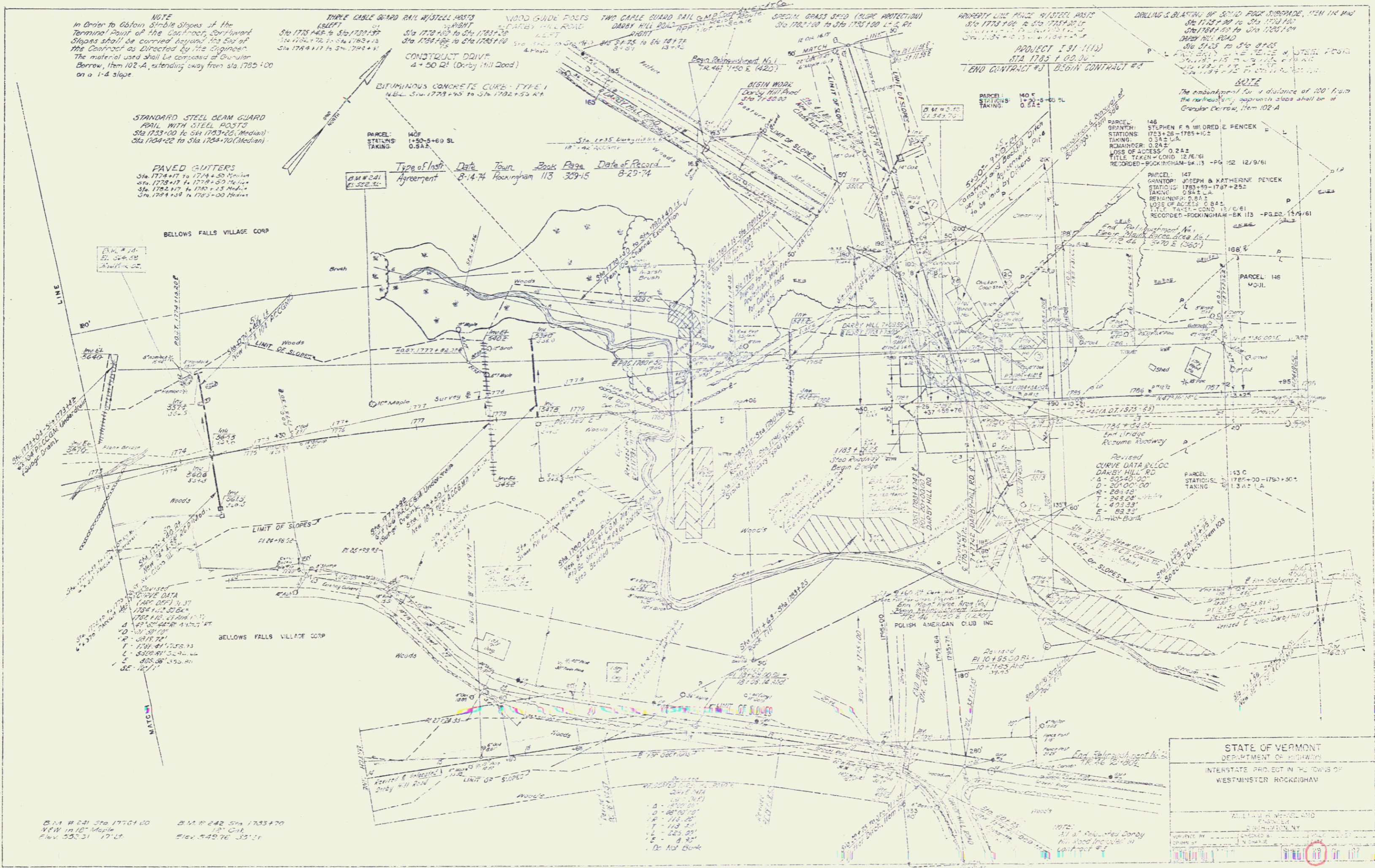
STANDARD STEEL DEAM GUARD RAIL WITH STEEL POSTS
Sta. 1733+00 to Sta. 1783+20 (Median)
Sta. 1784+00 to Sta. 1784+70 (Median)

PAVED CUTTERS
Sta. 1774+17 to 1774+50 Median
Sta. 1778+17 to 1778+50 Median
Sta. 1783+17 to 1783+50 Median
Sta. 1784+17 to 1784+50 Median

THREE CABLE GUARD RAIL WITH STEEL POSTS
LEFT
Sta. 1775+00 to Sta. 1775+30
Sta. 1782+75 to Sta. 1783+15
Sta. 1784+17 to Sta. 1784+50
RIGHT
Sta. 1778+00 to Sta. 1783+20
Sta. 1784+00 to Sta. 1784+70
CONSTRUCT DRIVE
4 + 50 RT (Darby Hill Road)

BITUMINOUS CONCRETE CURB - TYPE 1
N.B.L. Sta. 1774+00 to Sta. 1782+50 RT

Type of Inst. Agreement	Date	Town	Book	Page	Date of Record
DM # 041	8-14-74	Rockingham	113	329-15	8-29-74



STATE OF VERMONT
DEPARTMENT OF HIGHWAYS
INTERSTATE PROJECT IN THE TOWNS OF
WESTMINSTER ROCKINGHAM

WILLIAM H. WHEELAND
REGISTERED PROFESSIONAL ENGINEER
No. 12345
VERMONT
1974

DM # 041 Sta. 1774+00
W 1/4 1st Maple
Plan 552.31 17-12

DM # 042 Sta. 1783+70
1/2 1st Maple
Plan 549.76 35-11

- 1 - 1/4" = 100'
- 2 - 1/4" = 100'
- 3 - 1/4" = 100'
- 4 - 1/4" = 100'
- 5 - 1/4" = 100'
- 6 - 1/4" = 100'
- 7 - 1/4" = 100'
- 8 - 1/4" = 100'
- 9 - 1/4" = 100'
- 10 - 1/4" = 100'
- 11 - 1/4" = 100'
- 12 - 1/4" = 100'
- 13 - 1/4" = 100'
- 14 - 1/4" = 100'
- 15 - 1/4" = 100'
- 16 - 1/4" = 100'
- 17 - 1/4" = 100'
- 18 - 1/4" = 100'
- 19 - 1/4" = 100'
- 20 - 1/4" = 100'
- 21 - 1/4" = 100'
- 22 - 1/4" = 100'
- 23 - 1/4" = 100'
- 24 - 1/4" = 100'
- 25 - 1/4" = 100'
- 26 - 1/4" = 100'
- 27 - 1/4" = 100'
- 28 - 1/4" = 100'
- 29 - 1/4" = 100'
- 30 - 1/4" = 100'
- 31 - 1/4" = 100'
- 32 - 1/4" = 100'
- 33 - 1/4" = 100'
- 34 - 1/4" = 100'
- 35 - 1/4" = 100'
- 36 - 1/4" = 100'
- 37 - 1/4" = 100'
- 38 - 1/4" = 100'
- 39 - 1/4" = 100'
- 40 - 1/4" = 100'
- 41 - 1/4" = 100'
- 42 - 1/4" = 100'
- 43 - 1/4" = 100'
- 44 - 1/4" = 100'
- 45 - 1/4" = 100'
- 46 - 1/4" = 100'
- 47 - 1/4" = 100'
- 48 - 1/4" = 100'
- 49 - 1/4" = 100'
- 50 - 1/4" = 100'
- 51 - 1/4" = 100'
- 52 - 1/4" = 100'
- 53 - 1/4" = 100'
- 54 - 1/4" = 100'
- 55 - 1/4" = 100'
- 56 - 1/4" = 100'
- 57 - 1/4" = 100'
- 58 - 1/4" = 100'
- 59 - 1/4" = 100'
- 60 - 1/4" = 100'
- 61 - 1/4" = 100'
- 62 - 1/4" = 100'
- 63 - 1/4" = 100'
- 64 - 1/4" = 100'
- 65 - 1/4" = 100'
- 66 - 1/4" = 100'
- 67 - 1/4" = 100'
- 68 - 1/4" = 100'
- 69 - 1/4" = 100'
- 70 - 1/4" = 100'
- 71 - 1/4" = 100'
- 72 - 1/4" = 100'
- 73 - 1/4" = 100'
- 74 - 1/4" = 100'
- 75 - 1/4" = 100'
- 76 - 1/4" = 100'
- 77 - 1/4" = 100'
- 78 - 1/4" = 100'
- 79 - 1/4" = 100'
- 80 - 1/4" = 100'
- 81 - 1/4" = 100'
- 82 - 1/4" = 100'
- 83 - 1/4" = 100'
- 84 - 1/4" = 100'
- 85 - 1/4" = 100'
- 86 - 1/4" = 100'
- 87 - 1/4" = 100'
- 88 - 1/4" = 100'
- 89 - 1/4" = 100'
- 90 - 1/4" = 100'
- 91 - 1/4" = 100'
- 92 - 1/4" = 100'
- 93 - 1/4" = 100'
- 94 - 1/4" = 100'
- 95 - 1/4" = 100'
- 96 - 1/4" = 100'
- 97 - 1/4" = 100'
- 98 - 1/4" = 100'
- 99 - 1/4" = 100'
- 100 - 1/4" = 100'