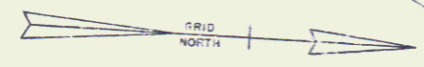


DRILLING & BLASTING OF SOLID ROCK SUBGRADE, ITEM 114 Mod.
 SBL STA 1734+15 TO STA 1743+00
 NBL STA 1734+45 TO STA 1739+00
 NBL STA 1737+25 TO STA 1744+00

Q S.B.L.
 (ARC DEF)
 PI 1733+00.21 BA
 R - 1732+90.89 Rhd.
 Δ - 17°35'37" Lt.
 D - 1730'
 R - 3019.72
 T - 391.30
 L - 11793.28
 E - 45.50
 SE - 12'11"

Revised
 S.B.L.
 (ARC DEF)
 PI 1730+1205.84
 R - 1730+102.94 Rhd.
 Δ - 17°26'30" Lt.
 D - 1730'
 R - 3019.72
 T - 391.30
 L - 11793.28
 E - 45.50
 SE - 12'11"

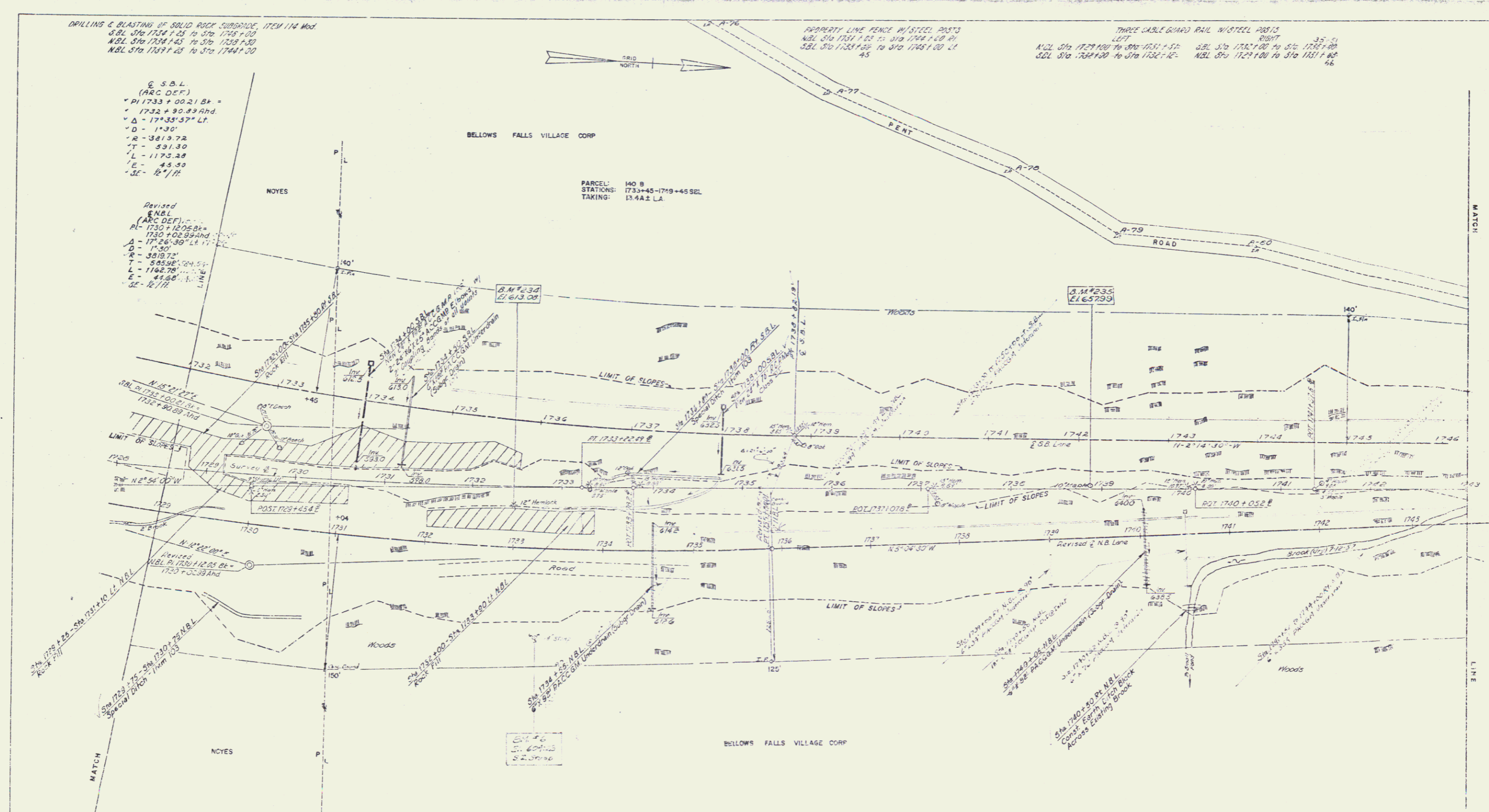


BELLOWS FALLS VILLAGE CORP

PARCEL: 140 B
 STATIONS: 1733+45-1749+45 SBL
 TAKING: 13.44 ± LA

PROPERTY LINE FENCE W/ STEEL POSTS
 NBL STA 1731+55 TO STA 1744+00 PL
 SBL STA 1731+55 TO STA 1744+00 PL

THREE CABLE GUARD RAIL W/ STEEL POSTS
 LEFT RIGHT 35'-5"
 NBL STA 1729+00 TO STA 1731+17
 SBL STA 1729+00 TO STA 1731+17
 NBL STA 1731+00 TO STA 1732+12
 SBL STA 1731+00 TO STA 1732+12



3.M #294 STA 1732+142 ±
 S/T 12' NOMICK
 Elev 617.05 ± 20"RA

3.M #235 STA 1738+135 ±
 S/T 10' Maple
 Elev 659.95 ± 31"

STATE OF VERMONT	
DEPARTMENT OF HIGHWAYS	
INTERSTATE PROJECT IN THE TOWNS OF WESTMINSTER ROORINGHAM	
WILLIAM H. MERRILL AND ASSOCIATES, INC. PLANNING/ENGINEERING	
DESIGNED BY	CHECKED BY
DRAWN BY	IN CHARGE
DATE	SCALE
SHEET 51 OF 127	