

INDEX OF SHEETS

STATE OF VERMONT
DEPARTMENT OF HIGHWAYS

PROPOSED IMPROVEMENT

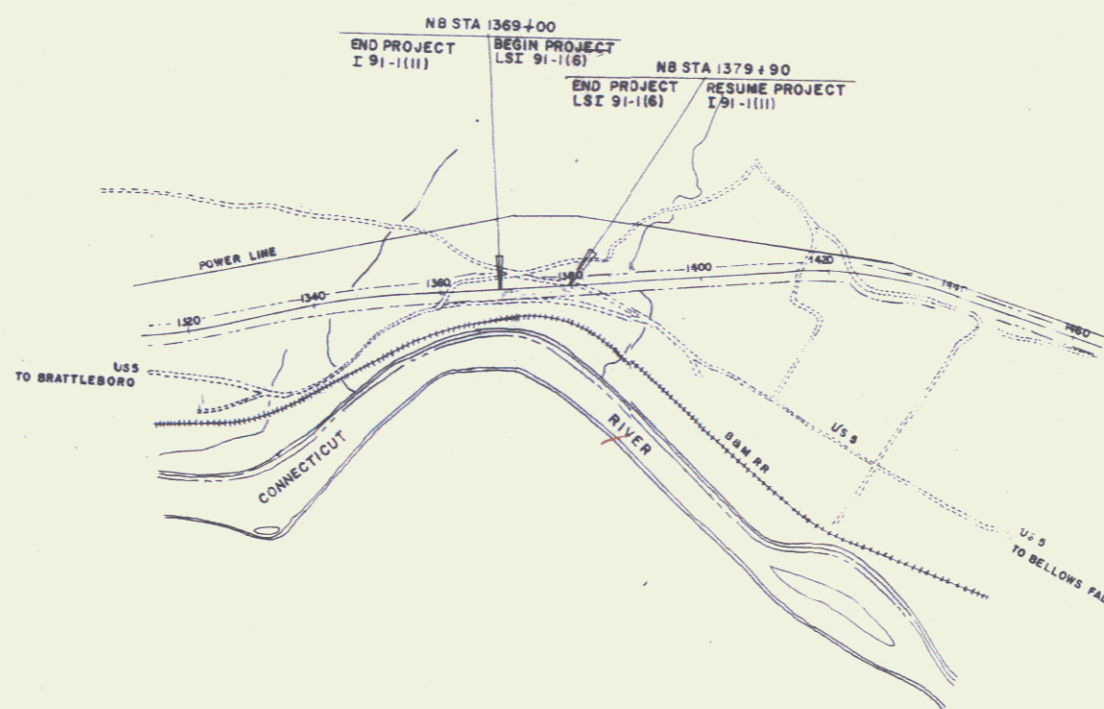
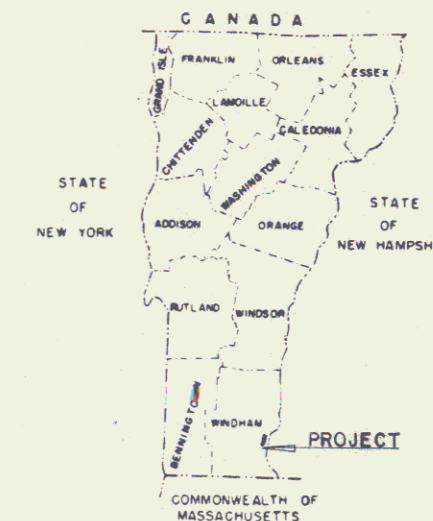
TOWN OF WESTMINSTER
COUNTY OF WINDHAM
BRATTLEBORO-BELLOWS FALLS ROAD

Pin # 992043

BEGINNING AT A POINT 2.231 MILES NORTH OF THE PUTNEY-WESTMINSTER TOWN LINE AND EXTENDING NORTHERLY 1,090 FEET.

LENGTH OF PROJECT 1,090 FEET = 0.206 MILES

R.O.W. PLANS



CONVENTIONAL SIGNS

POINT OF ACCESS	X
LIMITS OF ACCESS	—+—+—+—
COUNTY LINE	—+—+—+—+—+—+—
TOWN LINE	—+—+—+—+—+—+—
FENCE LINE	—+—+—+—+—+—+—
STONE WALL	—+—+—+—+—+—+—
UNFENCED PROPERTY	—+—+—+—+—+—+—
GUARD RAIL	—+—+—+—+—+—+—
TRAVELED WAY	—+—+—+—+—+—+—
RAILROAD	—+—+—+—+—+—+—
RETAINING WALL	—+—+—+—+—+—+—
CENTER LINE	—+—+—+—+—+—+—
SURVEY LINE	—+—+—+—+—+—+—
CULVERT	—+—+—+—+—+—+—
DROP INLET	—+—+—+—+—+—+—
TROLLEY POLE	—+—+—+—+—+—+—
POWER POLE	—+—+—+—+—+—+—
TELEPHONE POLE	—+—+—+—+—+—+—
TREES	—+—+—+—+—+—+—
HEDGE	—+—+—+—+—+—+—
F.A. CONSTRUCTION IDENTIFICATION SIGNS	A

SLOPE RIGHTS	SR
GROUND ELEVATION	DATUM
GRADE ELEVATION	DATUM
CURVE DATA	
DEFLECTION OF ANGLE	A
DEGREE OF CURVE	D
RADIUS OF CURVE	R
TANGENT DISTANCE	T
LENGTH OF CURVE	L
EXTERNAL DISTANCE	E
POINT OF INTERSECTION	P.I.
POINT OF CURVE	P.C.
POINT OF TANGENT	P.T.
POINT ON TANGENT	P.O.T.
POINT ON SUB-TANGENT	P.O.S.T.
R.O.W. LIMITS	

FOR RIGHT OF WAY DETAILS, SEE RIGHT OF WAY PLANS FOR THIS PROJECT.

THESE PLANS ARE SUBJECT TO SUCH REVISIONS AS MAY BE REQUIRED BY THE BUREAU OF PUBLIC ROADS OR THE COMMISSIONER OF HIGHWAYS. CONSTRUCTION IS TO BE CARRIED ON IN ACCORDANCE WITH THESE PLANS AND THE STANDARD SPECIFICATIONS FOR HIGHWAY AND BRIDGE CONSTRUCTION DATED APRIL, 1964, AS APPROVED BY THE BUREAU OF PUBLIC ROADS ON OCTOBER 12, 1964, INCLUDING ALL SUBSEQUENT APPROVED REVISIONS AND SUCH REVISED SPECIFICATIONS AND SPECIAL PROVISIONS AS ARE INCORPORATED IN THESE PLANS.

Interstate Rte 91
MP 25.84-26.05

APPROVED <i>[Signature]</i> R.O.W. DIRECTOR DATE 3-16-67	APPROVED <i>[Signature]</i> DISTRICT ENGINEER DATE 2-10-67	APPROVED <i>[Signature]</i> CONSTRUCTION ENGINEER DATE 2/9/67	APPROVED <i>[Signature]</i> LANDSCAPE ENGINEER DATE FEB. 8, 1967	APPROVED <i>[Signature]</i> ROADSIDE DEVELOPMENT ENGINEER DATE 2/8/67	APPROVED <i>[Signature]</i> ASST. CHIEF ENGINEER DATE 2/15/67	APPROVED <i>[Signature]</i> CHIEF ENGINEER DATE 2/15/67
--	--	---	--	---	---	---

DEPARTMENT OF COMMERCE BUREAU OF PUBLIC ROADS	
APPROVED	DATE
DIVISION ENGINEER	DATE
PROJECT LSI NO. 91-1(6)	
SHEET 1 OF 4 SHEETS	

STATE OF VERMONT
DEPARTMENT OF HIGHWAYS
RIGHT-OF-WAY PLANS
DETAIL SHEET
A OF A

TABLE OF PROJECT PROPERTY ACQUISITION

PARCEL NO.	GRANTOR	SHEET NO.	BEGINNING STATION	ENDING STATION	TAKING	REM.	RIGHTS	TITLE TAKEN	DATE	TOWN OR CITY RECORDED	BK.	PG.	REMARKS
1	PARDA, WILLIAM A. & ISOLDE	3,4	1369+00	1379+90	3.5A±								

TABLE OF REVISIONS

REVISION NO.	SHEET NO.	DESCRIPTION OF REVISION	DATE	MADE BY	APPROVED BY

MADE BY: C.E.L. DATE 3-15-67
CHECKED BY: T.C.B. DATE 3-15-67

———— PRESENT R.O.W.
 ||| ———— TAKING WITHOUT ACCESS
 ||| ———— TAKING WITHOUT ACCESS ALONG PROPERTY LINES
 ———— TAKING WITH ACCESS
 (P) PERMANENT EASEMENT
 (T) TEMPORARY EASEMENT

— SR — SR — SLOPE RIGHTS
 — P — P — PROPERTY LINE
 — Δ — Δ — TOP OF CUT
 — O — O — TOE OF SLOPE

APPROVED Thomas C. Bennett DATE 3-15-67
CHIEF OF ACQUISITION
 APPROVED L.M. Law DATE 3-15-67
HIGHWAY ENGINEER
 APPROVED W.P. [Signature] DATE 3-15-67
R.O.W. DIRECTOR

PROJECT WESTMINSTER
 NO. LSI 91-1(6)
 SHEET 2 OF 4

1146 No. 505
 1354+00 to 1359+20 Rt.
 1360+00 to 1363+50 Rt.
 1364+00 to 1364+47.1 Lt.

1146 No. 505
 1356+72 Rt. (Garage)
 1356+72 Rt. (House)
 1358+50 Rt. (Spring)

1146 No. 503
 1361+50 Rt.

1146 No. 503
 1362+00 Lt.
 1362+00 Lt.
 1362+00 Lt.

1146 No. 503
 1362+00 Lt. to 1367+00 Lt.

1146 No. 503
 1362+00 Lt. to 1367+00 Lt.

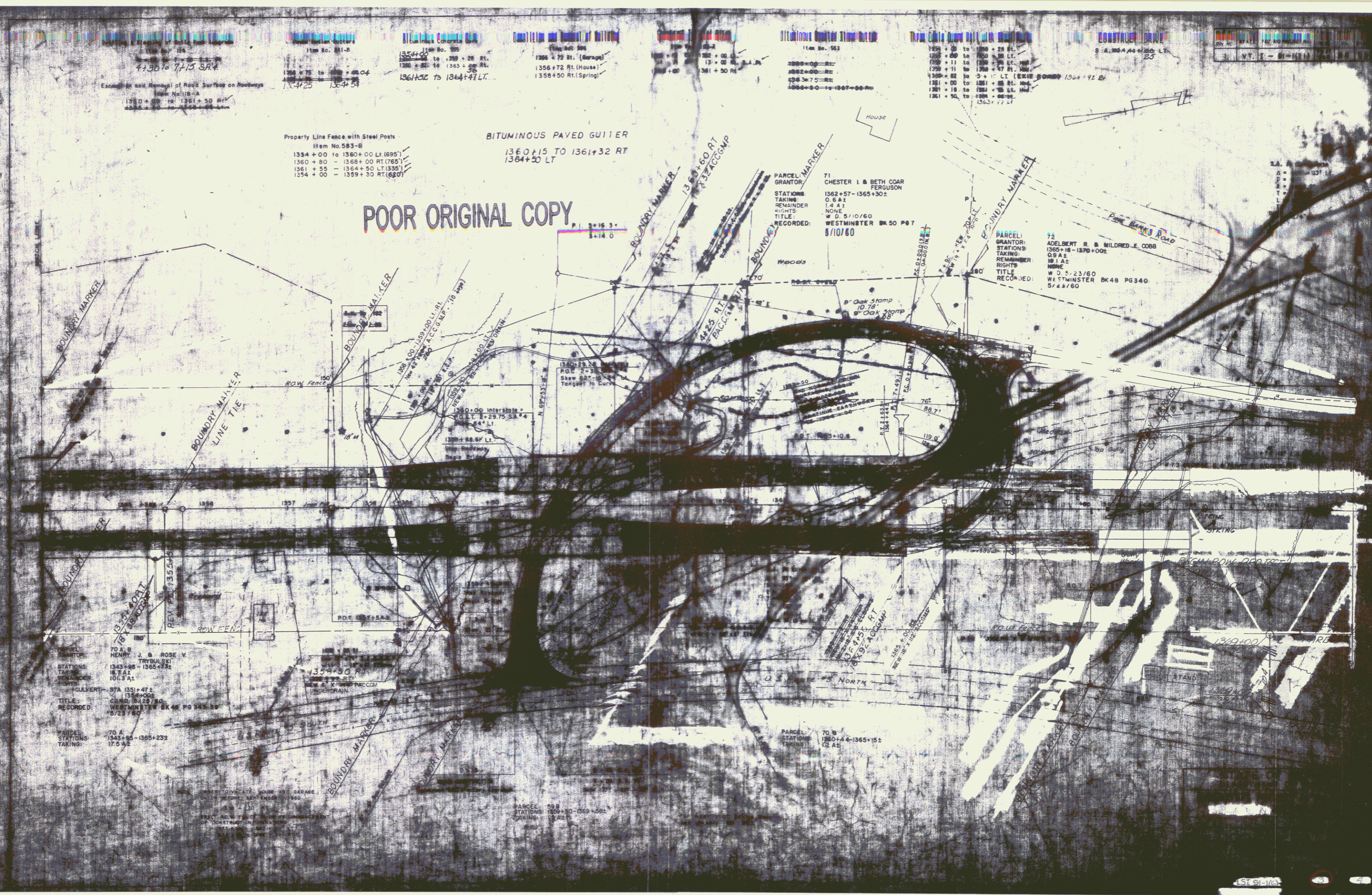
1146 No. 503
 1362+00 Lt. to 1367+00 Lt.

1146 No. 503
 1362+00 Lt. to 1367+00 Lt.

Property Line Fence with Steel Posts
 Item No. 583-B
 1354+00 to 1360+00 Lt. (695')
 1360+00 to 1368+00 Rt. (765')
 1361+55 to 1364+50 Lt. (335')
 1354+00 to 1359+30 Rt. (620')

BITUMINOUS PAVED GUTTER
 1360+15 TO 1361+32 RT
 1364+50 LT

POOR ORIGINAL COPY



Demolition and Removal of Building
 Item No. 586
 1378 + 15 to 1382 + 00
 1383 + 00 to 1385 + 00
 1385 + 15 to 1388 + 00

Construct U-Turn
 Item No. 190
 REFER TO R'WAY STD. B-17
 1370+00 TO 1371+00 RT.

CONSTRUCT SPECIAL DITCH
 ITEM # 101-A
 1370+00 TO 1371+00 RT.

Paved Median Gutter
 Item No. 361-B
 1374 + 25 TO 1374 + 50
 1374 + 75 TO 1375 + 00
 1382 + 25 TO 1382 + 50
 1385 + 33 TO 1385 + 83
 1385 + 15 TO 1387 + 15

Property Line Fence with Steel Posts
 Item No. 583-B
 1370 + 00 to 1386 + 00 Lt. ✓
 1370 + 00 to 1386 + 00 Rt. ✓
 1385 + 58 to 1387 + 00 Rt.

Three Cable Guard Rail with Steel Posts, Item 543
 1370 + 00 to 1372 + 50 Rt.
 1378 + 25 to 1385 + 86 Rt.

Bituminous Grouted Stone Gutter
 Item No. 553
 1380 + 10 RT.
 1380 + 50 RT.
 1385 + 58 to 1387 + 00 Rt.
 1373 + 90 Rt.

Planting Tree Spruce and Vines
 Item 651
 1373 + 00 to 1375 + 50 Left
 American Cranberry Bush (Viburnum Trilobum)

STAGE II
 CONSTRUCTION ITEMS

PUB. NO.	STATE	FED. AID PROJECT NO.	FISCAL YEAR	SHEET NO.	TOTAL SHEETS
1	VT.	I-91-1117	1961	1	1

Gravel Backfill
 Item No. 222 MOD.
 1380 + 00 to 1386 + 00 Lt.
 1382 + 00 to 1386 + 00 Lt.
 1381 + 60 to 1381 + 60 Lt.

SUB-BASE OF SAND
 Item No. 202
 1380 + 00 to 1386 + 00 Lt. ✓
 1382 + 00 to 1386 + 00 Rt. ✓

Plank Guard Rail with Heavy Posts
 Item No. 58
 1378 + 75 Lt.

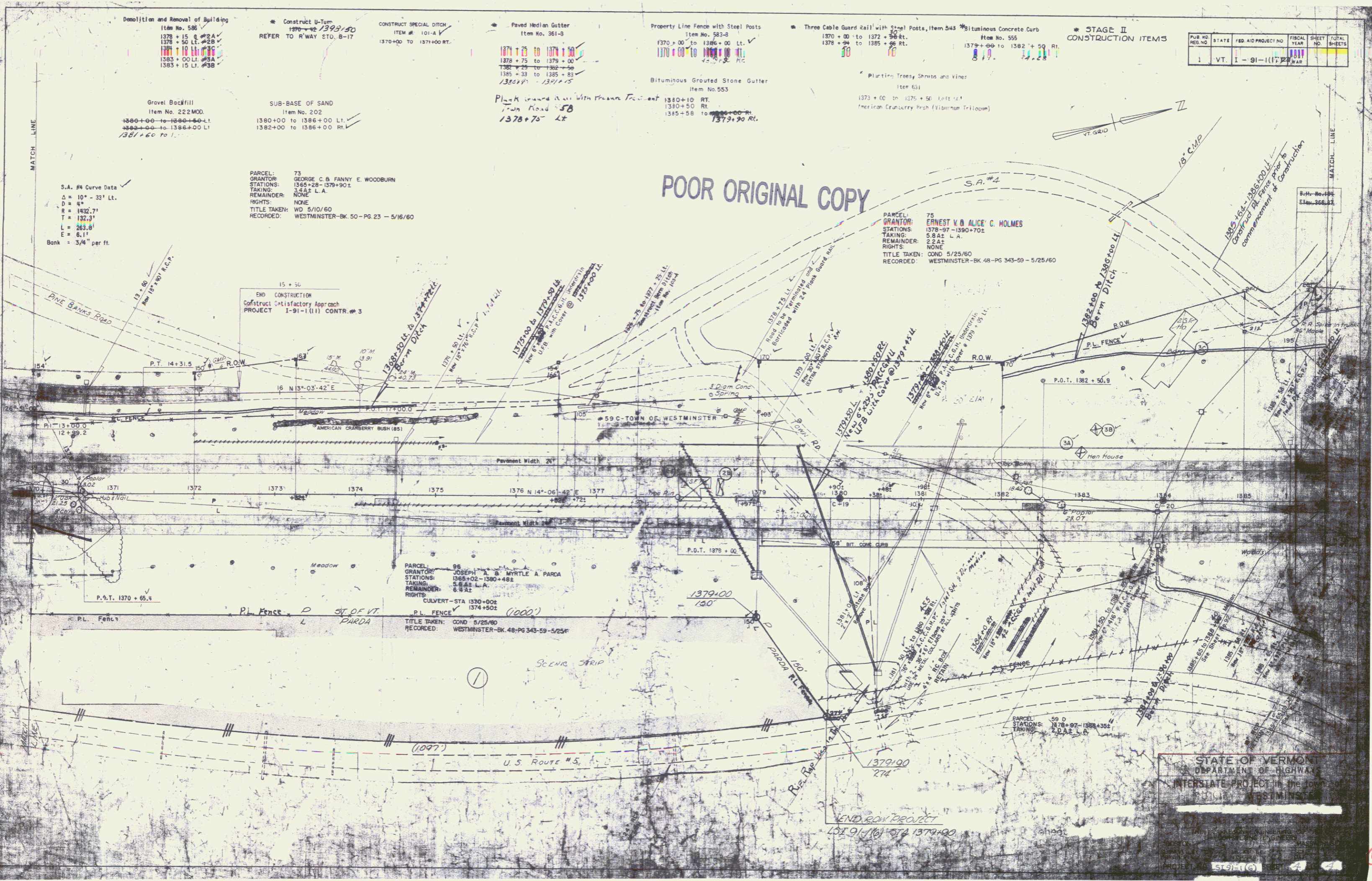
S.A. #4 Curve Data
 Δ = 10° - 31' Lt.
 D = 64'
 R = 1432.71'
 T = 132.31'
 L = 263.81'
 E = 6.11'
 Bank = 3/4' per ft.

PARCEL: 73
 GRANTOR: GEORGE C. & FANNY E. WOODBURN
 STATIONS: 1365+28 - 1379+90 L.
 TAKING: 5.6 A.C. L.A.
 REMAINDER: NONE
 RIGHTS: NONE
 TITLE TAKEN: WD 5/10/60
 RECORDED: WESTMINSTER-BK. 50-PG. 23 - 5/16/60

POOR ORIGINAL COPY

PARCEL: 75
 GRANTOR: ERNEST V. & ALICE C. HOLMES
 STATIONS: 1378-97 - 1390+70 L.
 TAKING: 5.8 AC L.A.
 REMAINDER: 2.2 AC
 RIGHTS: NONE
 TITLE TAKEN: COND 5/25/60
 RECORDED: WESTMINSTER-BK. 48-PG. 343-50 - 5/25/60

END CONSTRUCTION
 Confirmed Satisfactory Approval
 PROJECT 1-91-1117 CONTR. # 3



STATE OF VERMONT
 DEPARTMENT OF HIGHWAY
 INTERSTATE PROJECT IN THE TOWN OF WESTMINSTER

4