

Drilling & Sighting of Solid Rock Subgrade
 Item No. 114
 7+50 to 7+00 S.A. #5
 Excavation and Removal of Road Surface on Roadways
 Item No. 118-A
 1360+00 to 1361+50 RT
 4365+80 to 1366+65 LT

Paved Median Gutters
 Item No. 361-B
 1358+75 to 1359+00 C+L
 1364+75 to 1365+00

Bituminous Concrete Curb
 Item No. 555
 1357+50 to 1359+28 RT
 1350+82 to 1363+70 RT
 1358+50 RT (Spring)

Demolition and Removal of Building
 Item No. 506
 1356+72 Rt. (Garage)
 1358+50 Rt (Spring)

Construct Special Ditch
 Item No. 103-A
 1358+00 to 1362+00 LT
 1360+00 to 1361+50 RT

Bituminous Grouted Stone Gutter
 Item No. 553
 1359+00 RT
 1362+00 RT
 1364+75 RT
 1366+50 to 1367+55 RT

Three Cable Guard Rail with Steel Posts
 1359+20 to 1359+28 Rt.
 1358+50 to 1359+36 Lt.
 1359+11 to 1359+47 Lt. Med.
 1359+62 to 1360+10 LT (EXIT ROAD)
 1361+00 to 1361+55 Rt. Med.
 1361+19 to 1361+55 Lt. Med.
 1361+50 to 1361+06 Lt.

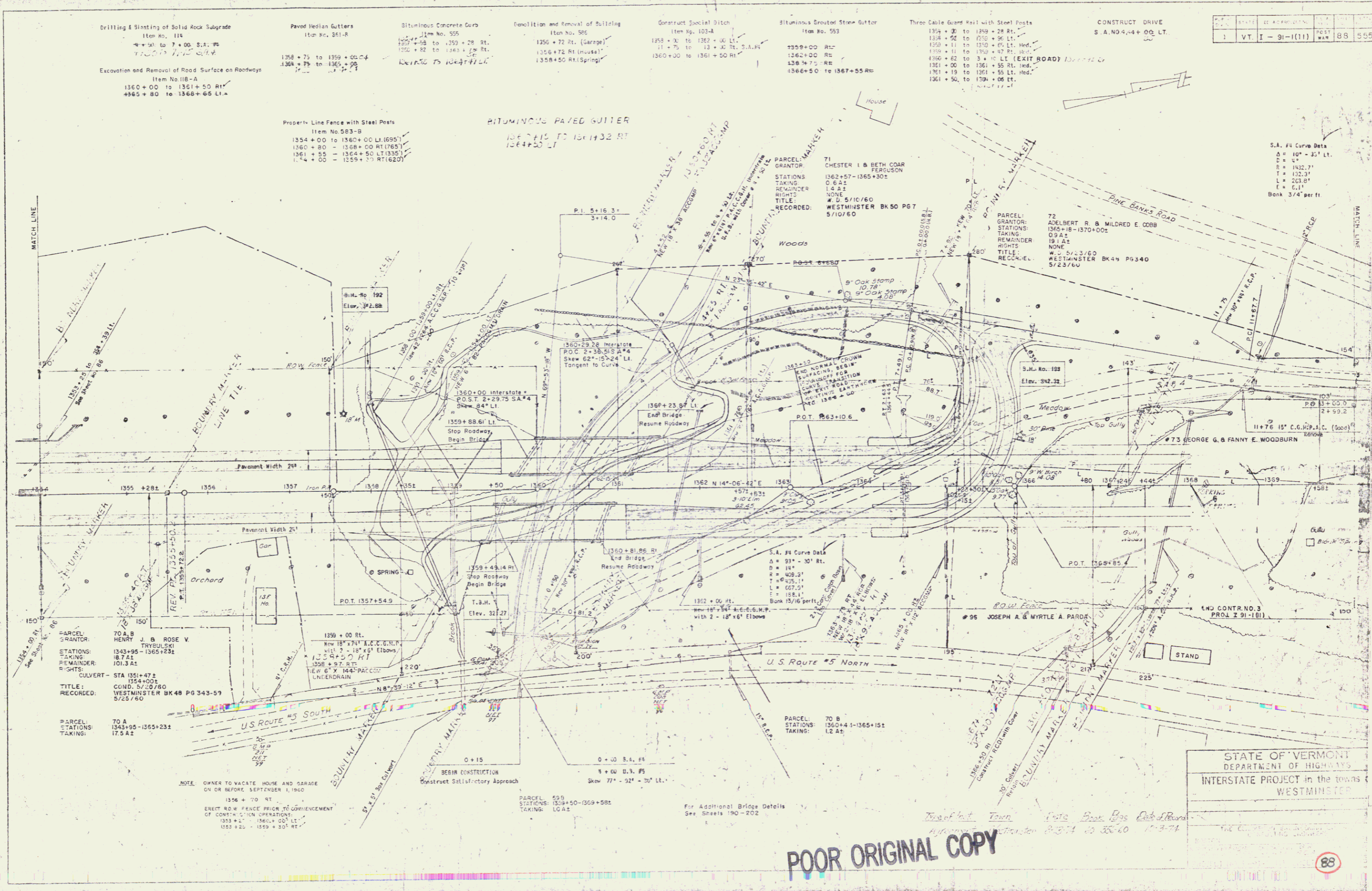
CONSTRUCT DRIVE
 S.A. NO. 4+4+00 LT.

STATE	VT	PROJECT	91-1(11)	POST	88	555
-------	----	---------	----------	------	----	-----

Property Line Fence with Steel Posts
 Item No. 503-B
 1354+00 to 1360+00 Lt (1695)
 1360+80 to 1368+00 Rt (765)
 1361+55 to 1364+50 Lt (1355)
 1364+00 to 1359+50 Rt (1620)

BITUMINOUS PAVED GUTTER
 1367+15 TO 1367+32 RT
 1364+50 LT

S.A. #4 Curve Data
 $\Delta = 10^\circ - 35' \text{ LT.}$
 $R = 142.3'$
 $T = 132.3'$
 $L = 263.8'$
 $E = 6.1'$
 Bank 3/4' per ft



POOR ORIGINAL COPY

88

12