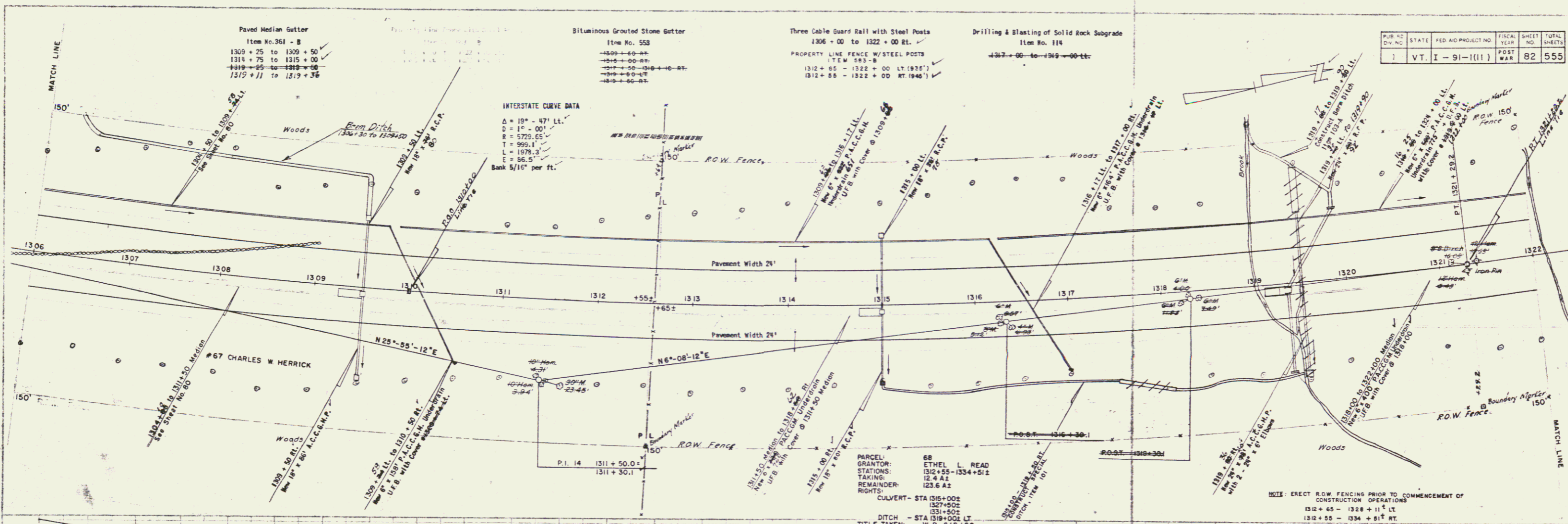
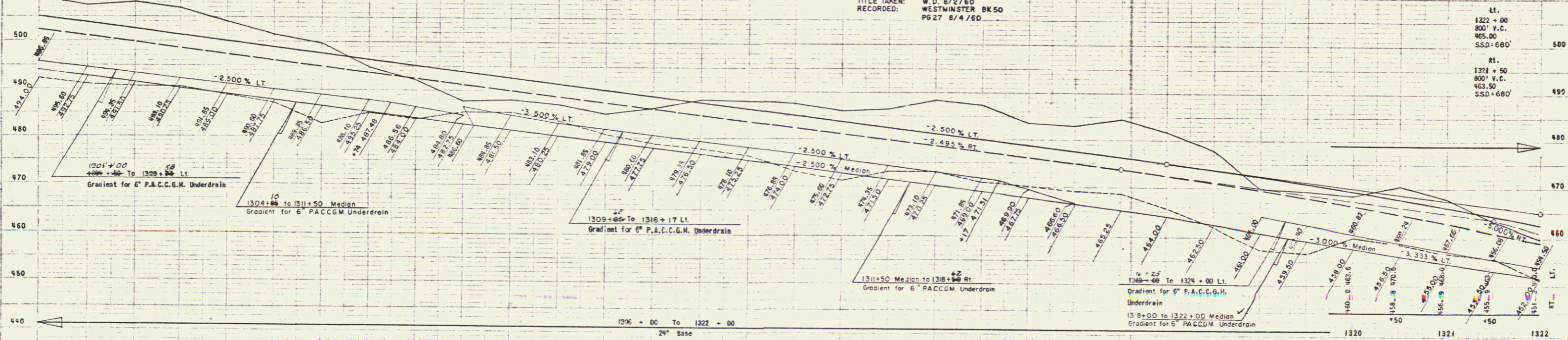


PLAN
 C.E. Co.
 1-57

ALPHAWORTH
 C.E. Co.
 1-57



PUB. NO.	STATE	FED. AID PROJECT NO.	FISCAL YEAR	SHEET NO.	TOTAL SHEETS
1	VT.	I - 91 - 1(11)	POST WAR	82	555



STATION	RT. ELEVATION	LT. ELEVATION
1306 + 50	492.1	509.0
1307 + 00	491.0	507.3
1307 + 50	490.7	508.1
1308 + 00	490.6	506.9
1308 + 50	488.9	504.1
1309 + 00	487.2	501.3
1309 + 50	483.0	499.7
1310 + 00	485.1	494.9
1310 + 50	488.0	492.0
1311 + 00	485.4	487.8
1311 + 50	485.3	488.0
1312 + 00	483.5	487.0
1312 + 50	480.7	485.1
1313 + 00	478.4	486.5
1313 + 50	477.7	488.2
1314 + 00	476.2	488.1
1314 + 50	473.0	487.7
1315 + 00	471.3	486.2
1315 + 50	473.2	486.7
1316 + 00	473.2	486.5
1316 + 50	471.0	487.5
1317 + 00	470.2	483.5
1317 + 50	466.1	482.1
1318 + 00	466.8	486.7
1318 + 50	464.8	481.9
1319 + 00	462.0	477.9
1319 + 50	457.7	469.9
1320 + 00	456.8	463.5

STATE OF VERMONT
 DEPARTMENT OF HIGHWAYS
 INTERSTATE PROJECT in the towns of
 WESTMINSTER

THE CLARKSON ENGINEERING CO., INC.
 CONSULTING ENGINEERS
 BOSTON MASSACHUSETTS

SURVEYED BY J. J. J. CHECKED BY G. R. S. DATE 1/25/50
 DRAWN BY J. S. IN CHARGE R.C.A. DATE 1/25/50
 PROJECT NO. 1-91-1(11) SHEET 82 OF 555

CONTRACT NO. 2

9