

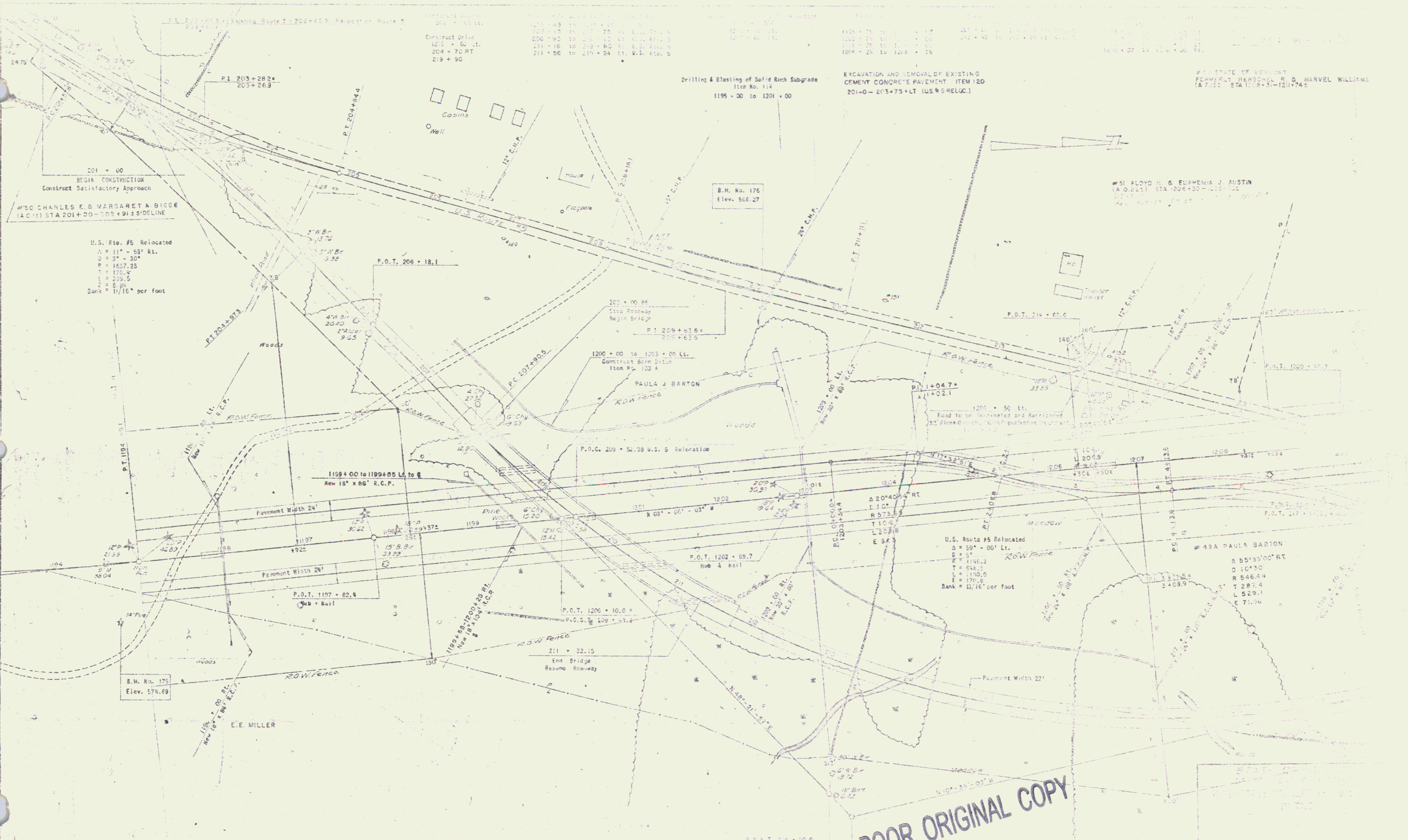
Construct Drive
1215 + 70 Lt.
204 + 70 Rt.
219 + 90

Construct Drive
1215 + 70 Lt.
204 + 70 Rt.
219 + 90

Drilling & Blasting of Solid Rock Subgrade
Item No. 114
1195 + 00 to 1201 + 00

EXCAVATION AND REMOVAL OF EXISTING
CEMENT CONCRETE PAVEMENT ITEM 120
201-0- 203+75+LT (US#5 RELOC.)

STATE OF VERMONT
FORMERLY HERSCHEL R. D. MARVEL WILLIAMS
1A 7122 STA 1108+31-1211+74.5



U.S. Rte. #5 Relocated
Δ = 11° - 53' Rt.
D = 3" - 30"
R = 1657.25
T = 170.4
L = 339.5
E = 6.85
Bank = 11/16" per foot

U.S. Route #5 Relocated
Δ = 59° - 00' Lt.
D = 5"
R = 1146.3
T = 546.5
L = 1190.0
E = 170.8
Bank = 15/16" per foot

#49A PAULA BARTON
Δ 55°33'00" RT
D 10°30'
R 546.44
T 287.4
L 529.1
E 71.06

POOR ORIGINAL COPY