

Seeding - Item 611
 Saeed Steep Slopes With
 Crown Vetch 20 Lbs./Acre.
 Creeping Red Fescue 30 Lbs./Acre.
 1070+00 - 1071+00 Lt.
 1077+00 - 1079+00 Rt.

Property Line Fence With Steel Posts
 Item 583 - B
 1070+00' to 1085+00' Lt.
 1070+00' to 1095+00' Rt.

Jute & Soilsaver
 1070+00 & Lt.

Paved Median Gutter

1074 + 00 to 1076 + 00
 1075 + 50 to 1079 + 75
 1083 + 50 to 1083 + 75

Bituminous Grouted Stone Gutter - Item 553
 1074+00 - Rt.
 1079+60 - Rt.

Three Cable Guard Rail With Steel Posts

1070 + 00 to 1078 + 75 Lt. Med.
 1070 + 00 to 1078 + 75 Rt. Med.
 1083 + 50 to 1085 + 00 Lt. Med.
 1083 + 50 to 1085 + 00 Rt. Med.
 + 25'

Drilling and Blasting of Solid Rock Subgrade

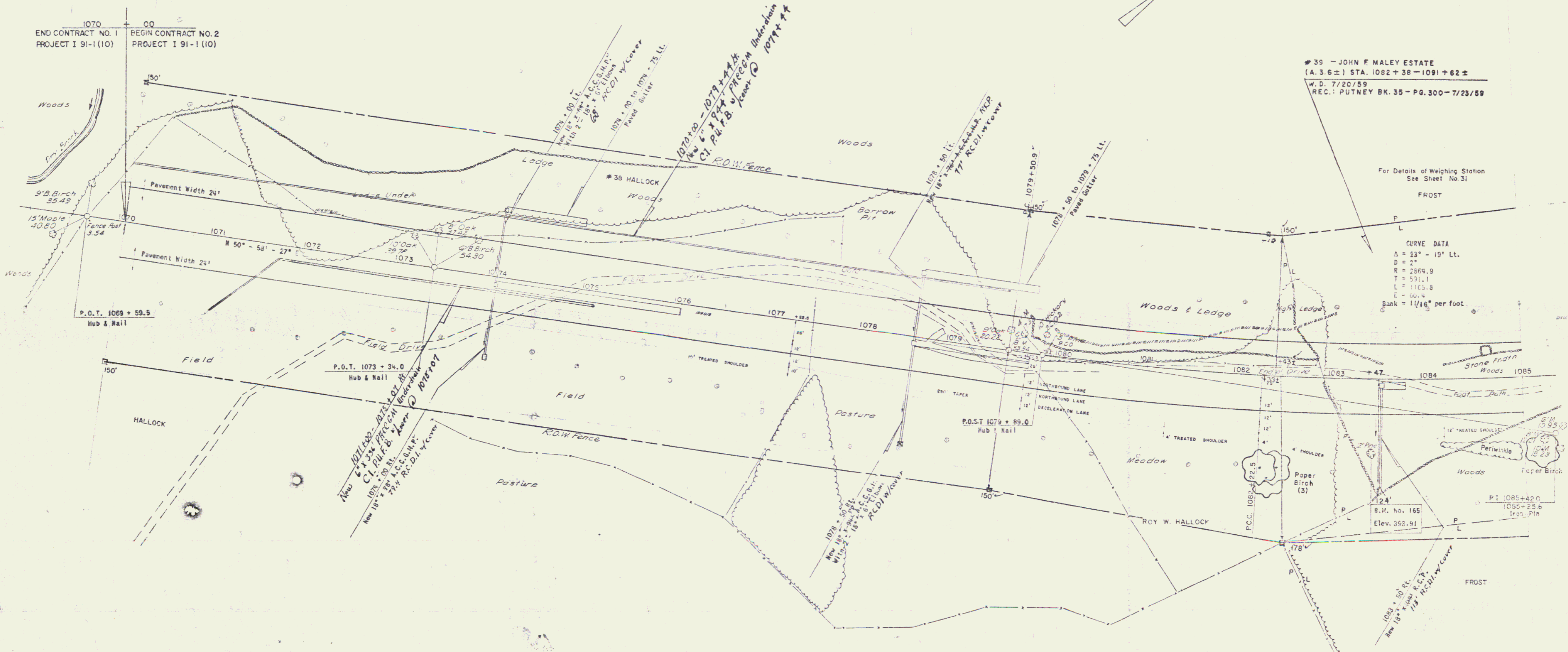
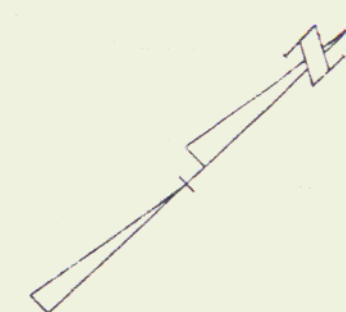
Station No. 114
 1071 + 50 to 1078 + 50
 1078 + 50 to 1085 + 00'

Granite Slope Edging

Item No. 556-A
 1084+05 - 1085+00

PUB. NO.	STATE	FED. ROAD DIST. NO.	PROJECT	SHEET NO.
1	VT.	I	91-1(10)	30

Note: For Summary Of Landscape Material,
 Contract No. 2, See Sheet No. 37.



STATE OF VERMONT
 DEPARTMENT OF HIGHWAYS
 INTERSTATE PROJECT in the town of
 PUTNEY

THE CURRIER ENGINEERING CO., INC.
 CONSULTING ENGINEERS
 BOSTON MASSACHUSETTS
 SHEET NO. 30 OF 30