

Note: For Summary Of Landscape Material
Contract No. 1, See Sheet No. 25

#35 GRACE M. CURRIER
(A 6.42) STA 1017+88-1029+75
CULVERT & DITCHING RISE STA. 1019+50 LT.
STA 1026+00 LT.
COND. 7/3/59
REC.: PUTNEY BK. 35 - PE. 222 - 7/10/59

Three-Cable Guard Rail with Steel Posts
1022+00 to 1027+00 Lt.

Paved Median Gutter
1022+50 to 1022+75
1026+00 to 1026+25
1035+75 to 1036+00

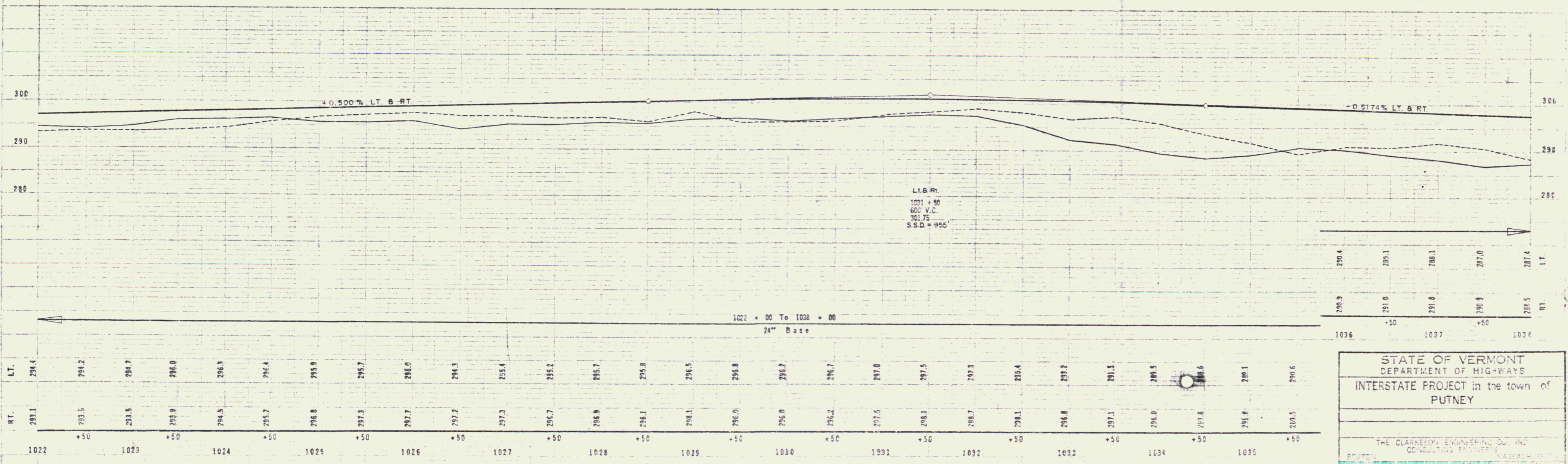
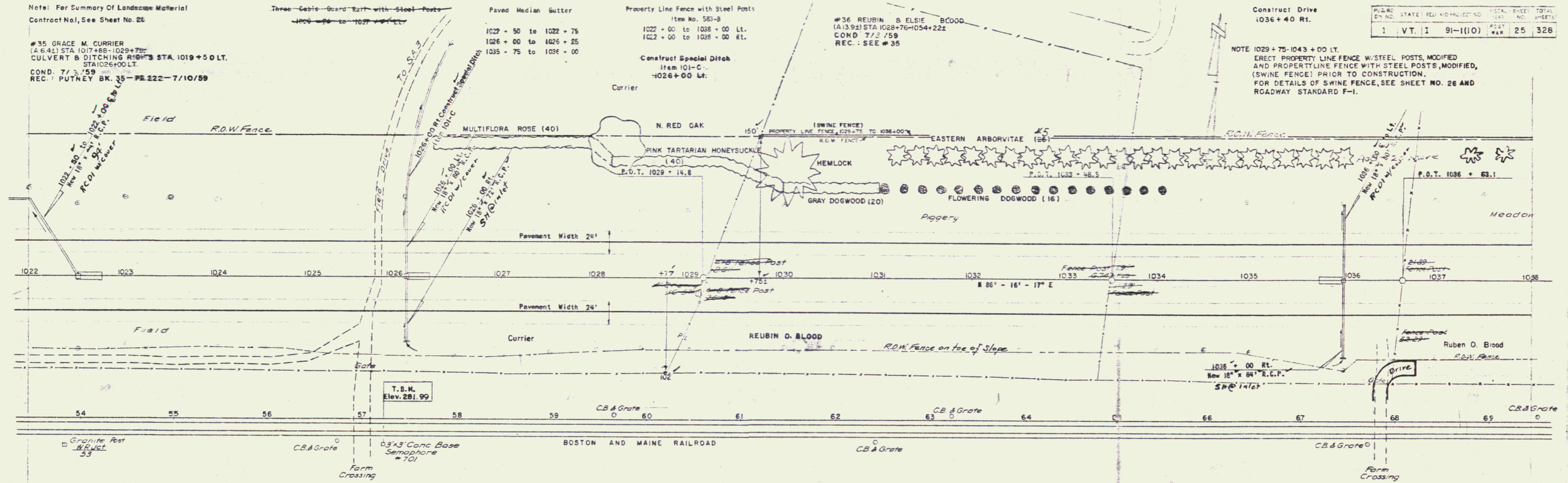
Property Line Fence with Steel Posts
Item No. 583-B
1022+00 to 1038+00 Lt.
1022+00 to 1038+00 Rt.
Construct Special Ditch
Item 101-C
+026+00 Lt.

#36 REUBIN & ELSIE BLOOD
(A 13.92) STA 1028+76-1054+22
COND. 7/3/59
REC.: SEE #35

Construct Drive
1036+40 Rt.

PLANS	STATE	REV. AND PROJECT NO.	LOCAL SHEET NO.	TOTAL SHEETS
1	VT.	1	91-1(10)	25
			POST WAR	328

NOTE 1029+75-1043+00 LT.
ERECT PROPERTY LINE FENCE W/STEEL POSTS, MODIFIED
AND PROPERTY LINE FENCE WITH STEEL POSTS, MODIFIED,
(SWINE FENCE) PRIOR TO CONSTRUCTION.
FOR DETAILS OF SWINE FENCE, SEE SHEET NO. 26 AND
ROADWAY STANDARD F-1.



STATE OF VERMONT
DEPARTMENT OF HIGHWAYS
INTERSTATE PROJECT in the town of
PUTNEY

THE CLARKE ENGINEERING CO. INC.
CONSULTING ENGINEERS

PROJECT NO. 91-1(10) SHEET 35
CONTRACT NO. 1

T. E. M. Currier Square Conc. Base Semaphore #701 24.5' Rt. Sta. 57 + 21 R.R. Trav. Elev. 281.99