

THREE CABLE GUARD RAIL WITH STEEL POSTS
 998+00 TO 1002+00 RT.
 1001+00 TO 1006+00 LT.
 70

PROPERTY LINE FENCE WITH STEEL POSTS
 ITEM 583-B
 990+00 TO 1006+00 LT.
 990+00 TO 1006+00 RT.

STONE FILL FOR SLOPE PROTECTION
 ITEM 522
 998+78 TO 999+49 RT.
 1002+58 TO 1006+00 LT.
 998+00 TO 1006+00 LT.

PAVED MEDIAN GUTTER
 ITEM 222
 990+25 TO 990+50
 995+75 TO 996+00
 998+85 TO 999+35
 1005+00 TO 1005+25

GRAVEL BACKFILL
 ITEM 222
 990+00 TO 998+52 LT.
 990+00 TO 997+93 RT.
 998+92 TO 1001+89 RT.
 999+91 TO 1000+90 LT.
 1002+39 TO 1006+00 LT.
 1002+39 TO 1005+25

BITUMINOUS GROUTED STONE GUTTER
 ITEM 553
 1001+85 TO 1002+60 LT.
 998+75
 998+75
 999+15
 1001+10
 1002+39 RT
 1002+40

BITUMINOUS CONCRETE CURB
 ITEM 555
 1001+91 TO 1006+00 LT.

CHANNEL EXCAVATION OF EARTH
 ITEM 106-A
 0+75 TO 4+25 CHANN. LINE

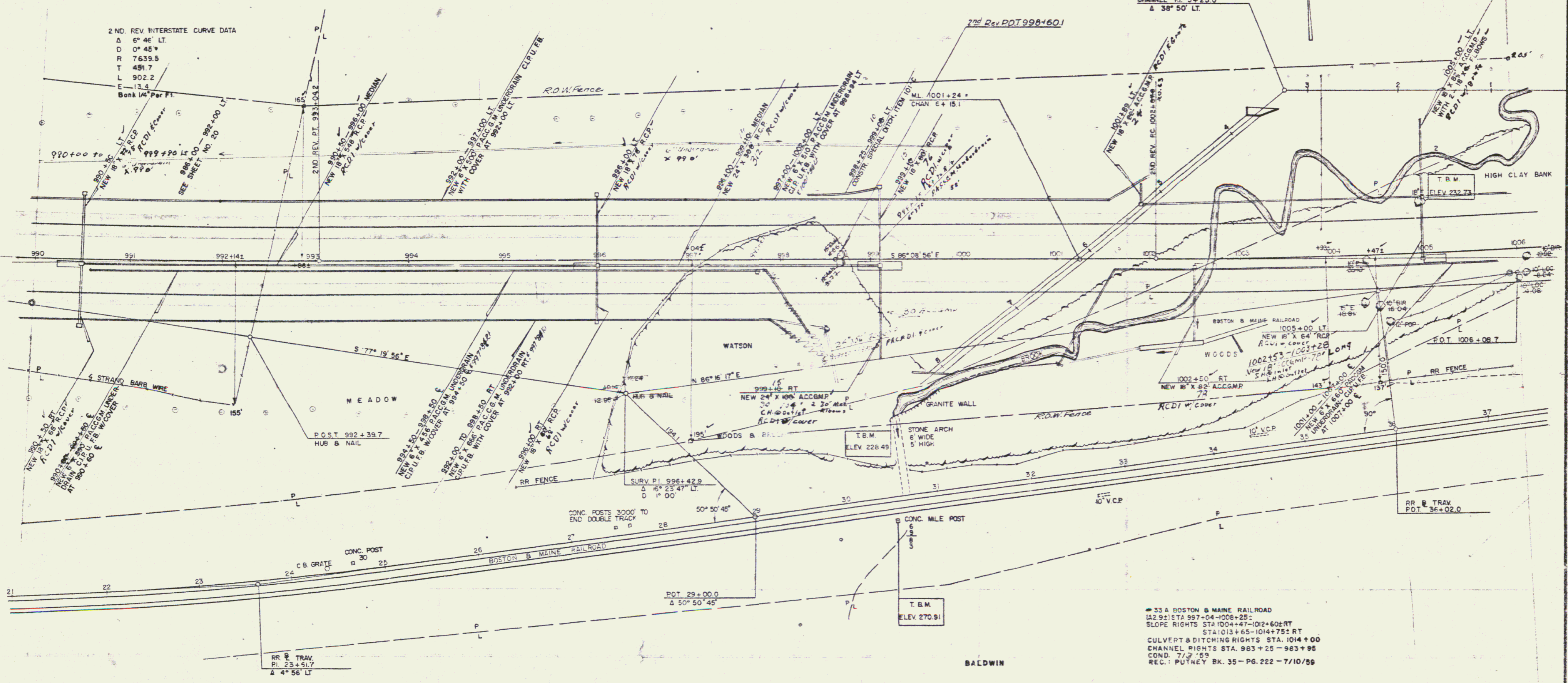
SUB-BASE OF SAND
 ITEM 202
 990+00 TO 998+42 RT.
 990+00 TO 1000+40 LT.

NOTE: 982+86-1009+34 LT.
 ERECT RIGHT-OF-WAY FENCE
 PRIOR TO CONSTRUCTION

#30 FIRST CONGREGATIONAL CHURCH OF PUTNEY, INC.

2ND REV INTERSTATE CURVE DATA
 Δ 7° 34' 47" LT.
 D 49' 45"
 R 7639.5
 T 491.7
 L 902.2
 E 13.4
 Bank 1/4" Per Ft.

2ND REV INTERSTATE CURVE DATA
 Δ 6° 46' LT.
 D 0° 45"
 R 7639.5
 T 491.7
 L 902.2
 E 13.4
 Bank 1/4" Per Ft.



#33 A BOSTON & MAINE RAILROAD
 (A2.9) STA 997+04-1006+25
 SLOPE RIGHTS STA 1004+47-1012+60 RT
 STA 1013+65-1014+75 RT
 CULVERT & DITCHING RIGHTS STA. 1014+00
 CHANNEL RIGHTS STA. 983+25-983+95
 COND. 7/2 '59
 REC.: PUTNEY BK. 35-PG. 222-7/10/59

STATE OF VERMONT
 DEPARTMENT OF HIGHWAYS
 INTERSTATE PROJECT IN THE TOWN OF
 PUTNEY

THE CLARKESON ENGINEERING CO. INC.
 CONSULTING ENGINEERS
 BOSTON MASSACHUSETTS

PROJECT NO 1-91-110 SHEET 22 OF 22
 CONTRACT NO. 1