

Remove and Dispose of Two Cable Guard Rail
 Item No. 540-A
 10 + 00 to 11 + 75 Rt.
 10 + 00 to 11 + 20 Rt.

Place Guard Rail with
 Preservative Treatment
 10 + 00 Rt. 16'

Construct Approach
 8 + 75 Rt.

Two Cable Guard Rail with Wood Posts
 9 + 55 to 17 + 00 Lt.
 9 + 80 to 15 + 40 Rt.
 50 10

Construct Special Bridge Item 101-A
 15+25 - 14+50

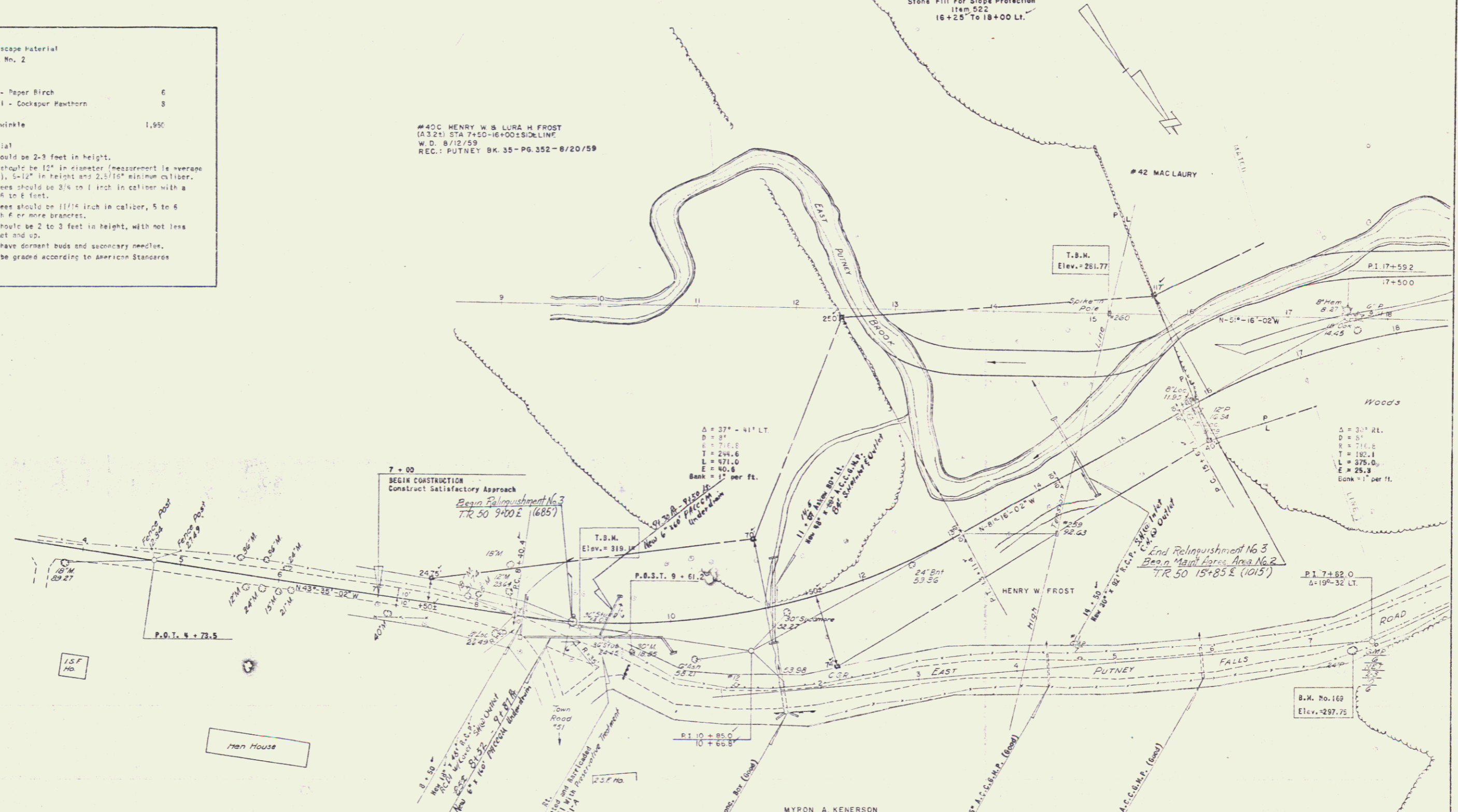
Channel Excavation of Earth
 Item 106-A
 12 + 75 to 16 + 25 Rt. Chan. E

Stone Fill For Slope Protection
 Item 522
 16 + 25 to 18 + 00 Lt.

STATE OF VERMONT
 PROJECT NO. 91-1(10)
 POST 37 328

Summary - Landscape Material
 Contract No. 2

I. Trees	
A. Deciduous	
1. Betula Papyrifera - Paper Birch	6
2. Crataegus Crispallii - Cockspur Hawthorn	3
II. Vines	
1. Vinca Minor - Periwinkle	1,950
III. General Notes	
A. Size of Planting Material	
1. Evergreen trees should be 2-3 feet in height.	
2. Evergreen shrubs should be 12" in diameter (measurement in average spread of branches), 3-12" in height and 2 1/2" minimum caliper.	
3. Large deciduous trees should be 3/4 to 1 inch in caliper with a minimum height of 4 to 6 feet.	
4. Small deciduous trees should be 1 1/4 inch in caliper, 5 to 6 feet in height with 6 or more branches.	
5. Deciduous shrubs should be 2 to 3 feet in height, with not less than 4 canes, 2 feet and up.	
6. All containers must have dormant buds and secondary needles.	
E. All plant material to be graded according to American Standards for Nursery Stock.	



STATE OF VERMONT
 DEPARTMENT OF HIGHWAYS
 INTERSTATE PROJECT in the town of
 PUTNEY

THE CLARKSON ENGINEERING CO. INC.
 CONSULTING ENGINEERS

PROJECT NO. 91-1(10) SHEET 8 OF 328
 CONTRACT NO. 2