

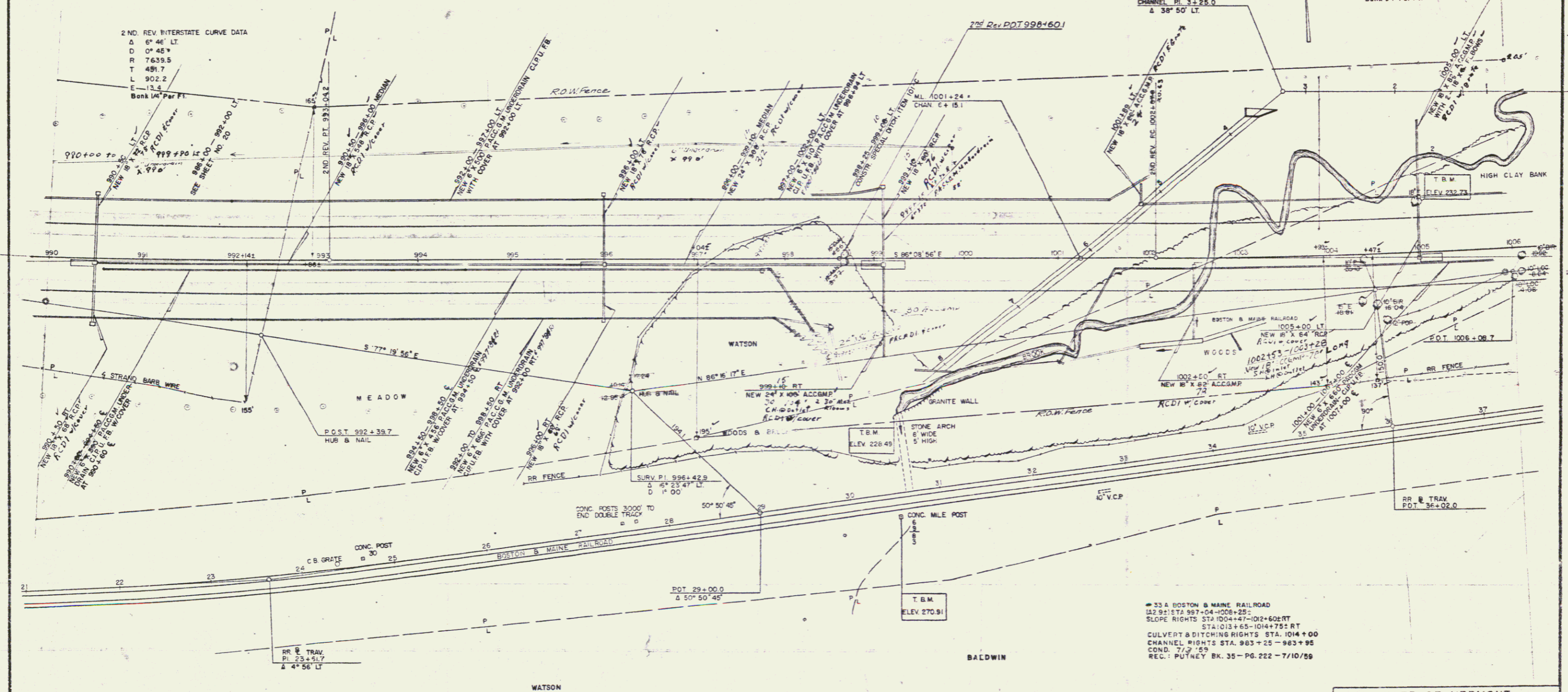
- THREE CABLE BARR RAIL WITH STEEL POSTS
998+85 TO 1002+44 RT
1001+84 TO 1006+00 LT
70
- CHANNEL EXCAVATION OF EARTH
ITEM 106-A
0+75 TO 4+25 CHANN LINE
- PROPERTY LINE FENCE WITH STEEL POSTS
ITEM 533-B
990+00 TO 1006+00 LT
990+00 TO 1006+00 RT
- SUB-BASE OF SAND
ITEM 202
990+00 TO 998+42 RT
990+00 TO 1000+40 LT
- STONE FILL FOR SLOPE PROTECTION
ITEM 523
998+78 TO 999+15 RT
1002+58 TO 1006+00 LT
998+85 TO 999+15 RT
1005+00 TO 1008+25
- PAVED MEDIAN GUTTER
990+25 TO 990+50
995+75 TO 996+00
998+85 TO 999+15
1005+00 TO 1008+25
- GRAVEL BACKFILL
ITEM 222
990+00 TO 998+52 LT
990+00 TO 997+93 RT
998+92 TO 1001+89 RT
998+91 TO 1000+90 LT
1002+39 TO 1006+00 LT
1002+37
- WATSON
- BITUMINOUS GROUTED STONE GUTTER
ITEM 553
1001+89 TO 1002+40 LT
1002+40 RT
1002+75
1002+75
1002+75
1002+75
1002+75
1002+75
- BITUMINOUS CONCRETE CURB
ITEM 555
1001+91 TO 1006+00 LT

#30 FIRST CONGREGATIONAL CHURCH OF PUTNEY, INC.

NOTE: 982+86-1009+34 LT.
ERECT RIGHT-OF-WAY FENCE
PRIOR TO CONSTRUCTION

2ND REV INTERSTATE CURVE DATA
 Δ 37° 34' 42" LT
 D 27' 48"
 R 7639.5
 T 506.1
 L 1010.6
 E 16.7
 Bank 1/4" Per Ft.

2ND REV INTERSTATE CURVE DATA
 Δ 6° 46' LT
 D 0' 45"
 R 7639.5
 T 481.7
 L 902.2
 E 13.4
 Bank 1/4" Per Ft.



#33 A BOSTON & MAINE RAILROAD
 STA 97+04-1006+25
 SLOPE RIGHTS STA 1004+47-1024+60 RT
 STA 1013+65-1047+92 RT
 CULVERT & DITCHING RIGHTS STA 1014+00
 CHANNEL RIGHTS STA 983+25-983+95
 COND. 7/2/59
 REC.: PUTNEY BK. 35-PG. 222-7/10/59

STATE OF VERMONT
 DEPARTMENT OF HIGHWAYS
 INTERSTATE PROJECT IN THE TOWN OF
 PUTNEY

THE CLARKSON ENGINEERING CO. INC.
 CONSULTING ENGINEERS
 BOSTON MASSACHUSETTS

PROJECT NO. 1-91-1110 SHEET 22 OF
 CONTRACT NO. 1