

STATE OF VERMONT
DEPARTMENT OF HIGHWAYS

Proposed Improvement

TOWNS OF GUILFORD - BRATTLEBORO

COUNTY OF WINDHAM

Interstate Route I 91

BERNARDSTON, MASS. - BRATTLEBORO, VT. ROAD

BEGINNING AT A POINT 5.879 MILES NORTH OF THE MASSACHUSETTS - VERMONT STATE LINE AND EXTENDING NORTHERLY 1.942 MILES.

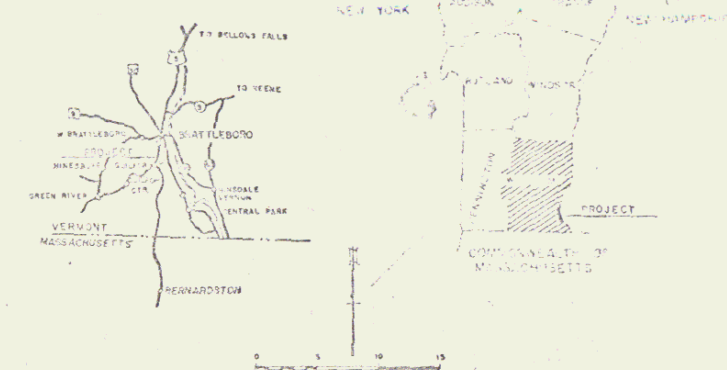
LENGTH OF ROADWAY (URBAN) 1,480.0 FEET = 0.280 MILES.
LENGTH OF ROADWAY (RURAL) 6,318.4 FEET = 1.278 MILES.
LENGTH OF BRIDGES 458.5 FEET = 0.086 MILES.
LENGTH OF PROJECT 10,255.9 FEET = 1.942 MILES.

DESIGN DESIGNATION	
ADT (1955)	2200
AUT (1975)	6640
DHV (1975)	1000
D	58%
T	7.5%

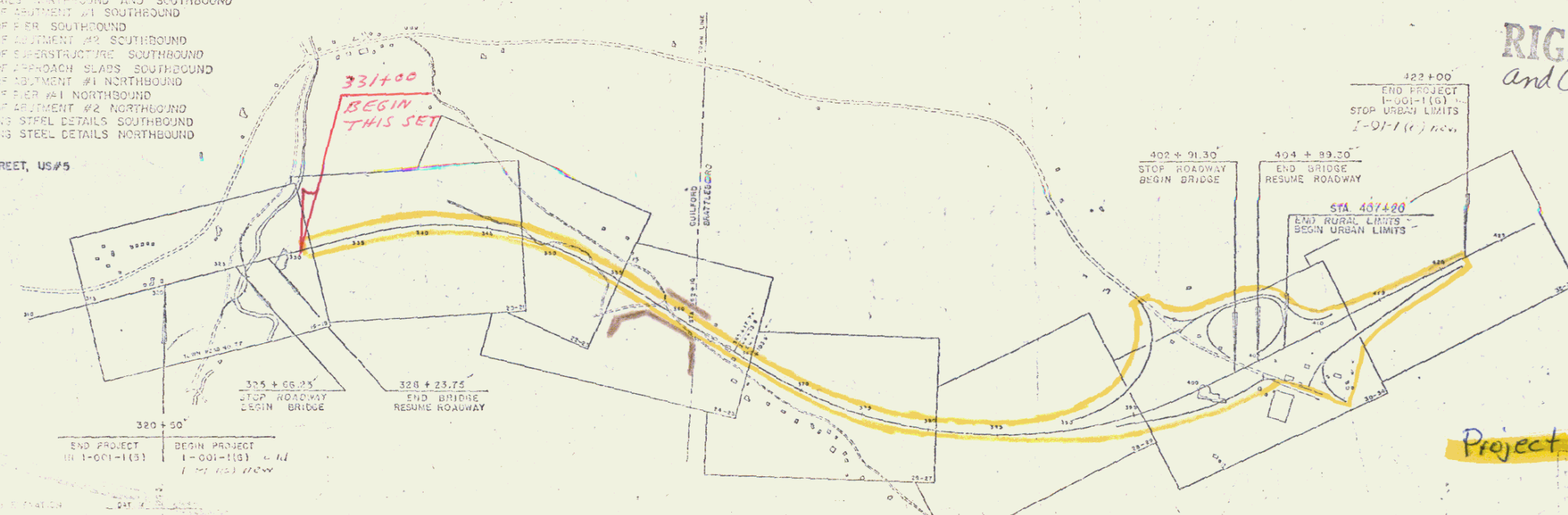
Pin # 99R038

2/1/50

- = LIMITED ACCESS PURCHASE.
- = NON LIMITED ACCESS PURCHASE.
- = AS BUILT RIGHT OF WAY FENCE.



- WORK SHEET US#5 OF SOUTH INTERCHANGE AT CANAL STREET
- SOUTH INTERCHANGE AT CANAL STREET
SHEETS US#5
- EMBANKMENTS AND MEDIAN TRANSITIONS US#5
- 63 ROADWAY STANDARD SHEET RS-55-10 CULVERTS
 - 64 ROADWAY STANDARD SHEET RS-55-11 CULVERTS
 - 65 ROADWAY STANDARD SHEET RS-55-12 CULVERTS
 - 66 ROADWAY STANDARD SHEET RS-55-13 CULVERTS
 - 67 ROADWAY STANDARD SHEET RS-55-14 CULVERTS
 - 68 ROADWAY STANDARD SHEET RS-55-15 CULVERTS
 - 69 ROADWAY STANDARD SHEET RS-55-16 CULVERTS
 - 70 ROADWAY STANDARD SHEET RS-55-17 CULVERTS
 - 71 ROADWAY STANDARD SHEET RS-55-18 CULVERTS
 - 72 ROADWAY STANDARD SHEET RS-55-19 CULVERTS
 - 73 ROADWAY STANDARD SHEET RS-55-20 CULVERTS
 - 74 ROADWAY STANDARD SHEET RS-55-21 CULVERTS
 - 75 ROADWAY STANDARD SHEET RS-55-22 CULVERTS
 - 76 ROADWAY STANDARD SHEET RS-55-23 CULVERTS
 - 77 ROADWAY STANDARD SHEET RS-55-24 CULVERTS
 - 78 ROADWAY STANDARD SHEET RS-55-25 CULVERTS
 - 79 ROADWAY STANDARD SHEET RS-55-26 CULVERTS
 - 80 ROADWAY STANDARD SHEET RS-55-27 CULVERTS
 - 81 ROADWAY STANDARD SHEET RS-55-28 CULVERTS
 - 82 ROADWAY STANDARD SHEET RS-55-29 CULVERTS
 - 83 ROADWAY STANDARD SHEET RS-55-30 CULVERTS
 - 84 ROADWAY STANDARD SHEET RS-55-31 CULVERTS
 - 85 ROADWAY STANDARD SHEET RS-55-32 CULVERTS
 - 86 ROADWAY STANDARD SHEET RS-55-33 CULVERTS
 - 87 ROADWAY STANDARD SHEET RS-55-34 CULVERTS
 - 88 ROADWAY STANDARD SHEET RS-55-35 CULVERTS
 - 89 ROADWAY STANDARD SHEET RS-55-36 CULVERTS
 - 90 ROADWAY STANDARD SHEET RS-55-37 CULVERTS
 - 91 ROADWAY STANDARD SHEET RS-55-38 CULVERTS
 - 92 ROADWAY STANDARD SHEET RS-55-39 CULVERTS
 - 93 ROADWAY STANDARD SHEET RS-55-40 CULVERTS
 - 94 ROADWAY STANDARD SHEET RS-55-41 CULVERTS
 - 95 ROADWAY STANDARD SHEET RS-55-42 CULVERTS
 - 96 ROADWAY STANDARD SHEET RS-55-43 CULVERTS
 - 97 ROADWAY STANDARD SHEET RS-55-44 CULVERTS
 - 98 ROADWAY STANDARD SHEET RS-55-45 CULVERTS
 - 99 ROADWAY STANDARD SHEET RS-55-46 CULVERTS
 - 100 ROADWAY STANDARD SHEET RS-55-47 CULVERTS
 - 101 ROADWAY STANDARD SHEET RS-55-48 CULVERTS
 - 102 ROADWAY STANDARD SHEET RS-55-49 CULVERTS
 - 103 ROADWAY STANDARD SHEET RS-55-50 CULVERTS
 - 104 ROADWAY STANDARD SHEET RS-55-51 CULVERTS
 - 105 ROADWAY STANDARD SHEET RS-55-52 CULVERTS
 - 106 ROADWAY STANDARD SHEET RS-55-53 CULVERTS
 - 107 ROADWAY STANDARD SHEET RS-55-54 CULVERTS
 - 108 ROADWAY STANDARD SHEET RS-55-55 CULVERTS
 - 109 ROADWAY STANDARD SHEET RS-55-56 CULVERTS
 - 110 ROADWAY STANDARD SHEET RS-55-57 CULVERTS
 - 111 ROADWAY STANDARD SHEET RS-55-58 CULVERTS
 - 112 ROADWAY STANDARD SHEET RS-55-59 CULVERTS
 - 113 ROADWAY STANDARD SHEET RS-55-60 CULVERTS
 - 114 ROADWAY STANDARD SHEET RS-55-61 CULVERTS
 - 115 ROADWAY STANDARD SHEET RS-55-62 CULVERTS
 - 116 ROADWAY STANDARD SHEET RS-55-63 CULVERTS
 - 117 ROADWAY STANDARD SHEET RS-55-64 CULVERTS
 - 118 ROADWAY STANDARD SHEET RS-55-65 CULVERTS
 - 119 ROADWAY STANDARD SHEET RS-55-66 CULVERTS
 - 120 ROADWAY STANDARD SHEET RS-55-67 CULVERTS
 - 121 ROADWAY STANDARD SHEET RS-55-68 CULVERTS
 - 122 ROADWAY STANDARD SHEET RS-55-69 CULVERTS
 - 123 ROADWAY STANDARD SHEET RS-55-70 CULVERTS
 - 124 ROADWAY STANDARD SHEET RS-55-71 CULVERTS
 - 125 ROADWAY STANDARD SHEET RS-55-72 CULVERTS
 - 126 ROADWAY STANDARD SHEET RS-55-73 CULVERTS
 - 127 ROADWAY STANDARD SHEET RS-55-74 CULVERTS
 - 128 ROADWAY STANDARD SHEET RS-55-75 CULVERTS
 - 129 ROADWAY STANDARD SHEET RS-55-76 CULVERTS
 - 130 ROADWAY STANDARD SHEET RS-55-77 CULVERTS
 - 131 ROADWAY STANDARD SHEET RS-55-78 CULVERTS
 - 132 ROADWAY STANDARD SHEET RS-55-79 CULVERTS
 - 133 ROADWAY STANDARD SHEET RS-55-80 CULVERTS
 - 134 ROADWAY STANDARD SHEET RS-55-81 CULVERTS
 - 135 ROADWAY STANDARD SHEET RS-55-82 CULVERTS
 - 136 ROADWAY STANDARD SHEET RS-55-83 CULVERTS
 - 137 ROADWAY STANDARD SHEET RS-55-84 CULVERTS
 - 138 ROADWAY STANDARD SHEET RS-55-85 CULVERTS
 - 139 ROADWAY STANDARD SHEET RS-55-86 CULVERTS
 - 140 ROADWAY STANDARD SHEET RS-55-87 CULVERTS
 - 141 ROADWAY STANDARD SHEET RS-55-88 CULVERTS
 - 142 ROADWAY STANDARD SHEET RS-55-89 CULVERTS
 - 143 ROADWAY STANDARD SHEET RS-55-90 CULVERTS
 - 144 ROADWAY STANDARD SHEET RS-55-91 CULVERTS
 - 145 ROADWAY STANDARD SHEET RS-55-92 CULVERTS
 - 146 ROADWAY STANDARD SHEET RS-55-93 CULVERTS
 - 147 ROADWAY STANDARD SHEET RS-55-94 CULVERTS
 - 148 ROADWAY STANDARD SHEET RS-55-95 CULVERTS
 - 149 ROADWAY STANDARD SHEET RS-55-96 CULVERTS
 - 150 ROADWAY STANDARD SHEET RS-55-97 CULVERTS
 - 151 ROADWAY STANDARD SHEET RS-55-98 CULVERTS
 - 152 ROADWAY STANDARD SHEET RS-55-99 CULVERTS
 - 153 ROADWAY STANDARD SHEET RS-55-100 CULVERTS
- CROSS SECTIONS
147 CROSS SECTIONS - SOUTH INTERCHANGE AT CANAL STREET, US#5
148 CROSS SECTIONS - SIDE LINE 326+31.0
149 CHANNEL SECTIONS BRIDGE AT 326+95.0



RIGHT-OF-WAY
and Construction Plans

FIELD SET

Project # I 91-1(6)

POOR ORIGINAL COPY

THESE PLANS ARE SUBJECT TO COUNTERSIGNING AS MAY BE REQUIRED BY THE BOARD OF PUBLIC ROADS OF THE COMMONWEALTH OF MASSACHUSETTS.

CONSTRUCTION IS SUBJECT TO THE SPECIFICATIONS FOR HIGHWAY AND BRIDGE CONSTRUCTION OF JANUARY 1962 SUBMITTED TO THE BOARD OF PUBLIC ROADS AS APPROVED JULY 5, 1966. IT INCLUDES ALL SUBSEQUENT APPROVED REVISIONS AND SUCH REVISIONS SPECIFICATIONS AND SPECIAL PROVISIONS AS ARE SUBMITTED WITH THE PLANS.

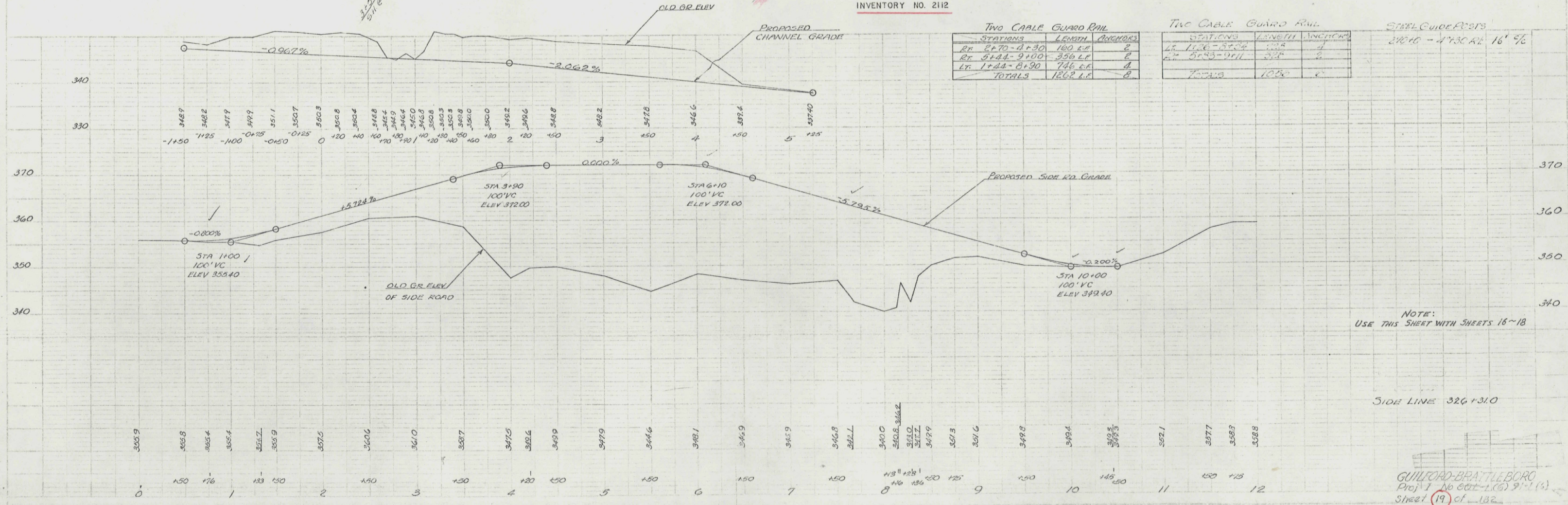
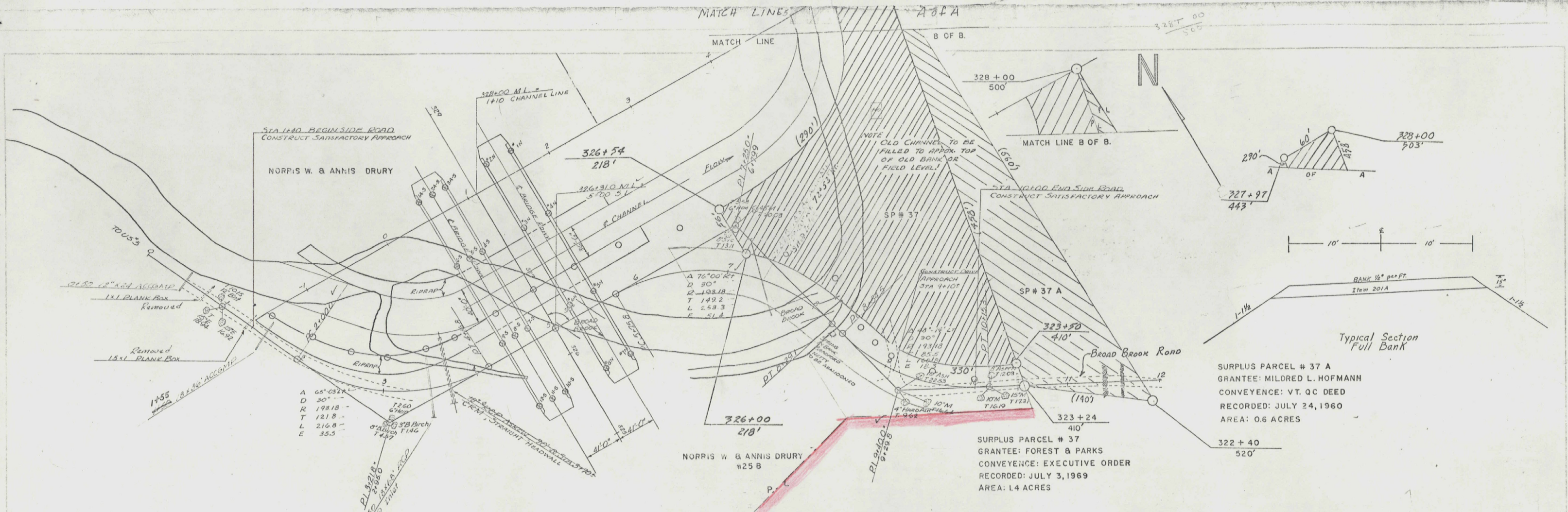
DEPARTMENT OF CONSUMER
BOARD OF PUBLIC ROADS
MP 5.88-7.82

APPROVED	REVISION	DATE	BY	DATE	BY	DATE	BY	DATE	BY

MAR 19 1974

STEARNS R. JENKINS

32050-78200



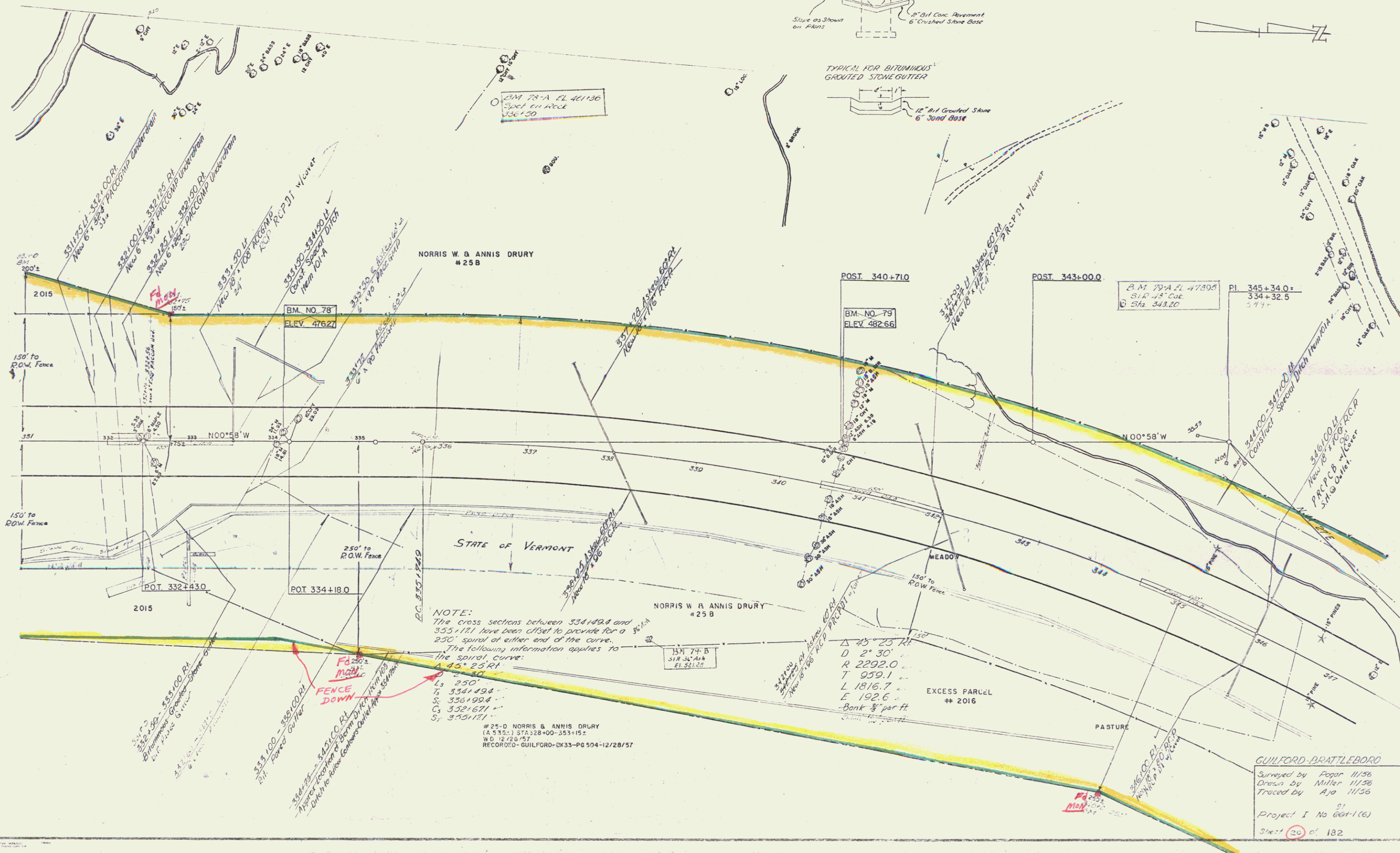
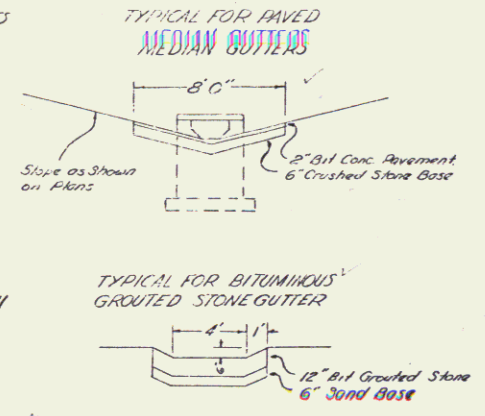
TWO CABLE GUARD RAIL			TWO CABLE GUARD RAIL			STEEL GUIDE POSTS		
STATIONS	LENGTH	ANCHORS	STATIONS	LENGTH	ANCHORS	24x10 - 4"x3" GALV 16' 9/8"		
Rt. 2+70-4+30	160 LF	2	Lt. 1126-5+24	134	4			
Rt. 5+14-9+00	386 LF	2	Lt. 5+25-9+11	386	2			
Lt. 1+24-8+90	766 LF	4	Totals	1050	6			
TOTALS	1262 LF	8						

NOTE:
USE THIS SHEET WITH SHEETS 16-18

SIDE LINE 326+31.0

THREE CABLE GUARD RAIL w/ STEEL POSTS
 Rt 331+00 - 333+12
 Lt 331+00 - 333+16
 Lt 341+64 - 341+00

THREE CABLE GUARD RAIL w/ STEEL POSTS
 331+00 - 332+00 Rt
 331+00 - 333+40 Lt
 342+46 - 347+00 Lt



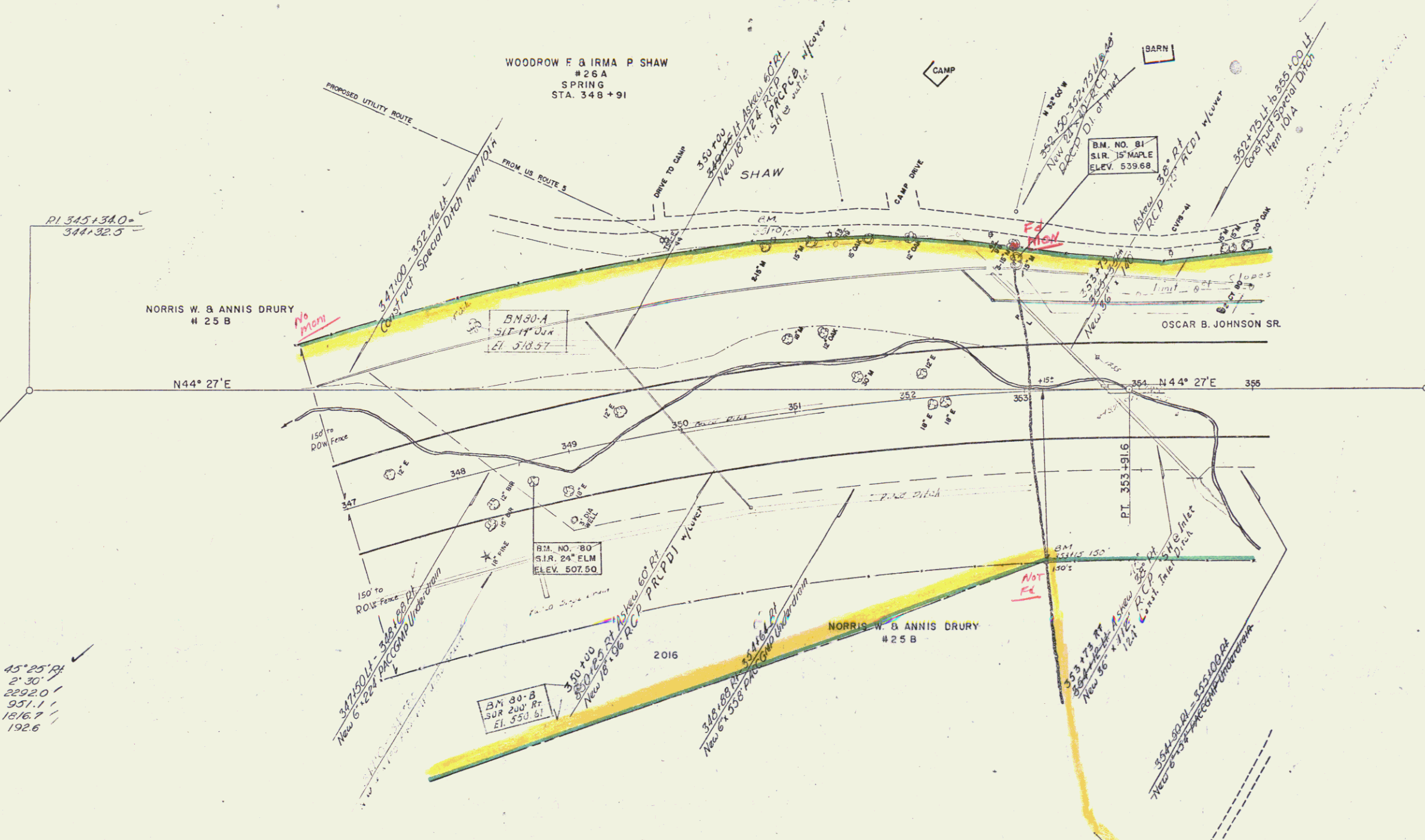
NOTE:
 The cross sections between 334+49.4 and 355+171 have been offset to provide for a 250' spiral at either end of the curve.
 The following information applies to the spiral curve:
 Δ 45° 25' RT
 Ls 250
 Ts 334+49.4
 Cs 336+99.4
 Cs 352+671
 Ss 355+171

25-D NORRIS & ANNIS DRURY
 (A 535) STA 328+00-353+15±
 W.D. 12/28/57
 RECORDED - GUILFORD - QK33-P6 504-12/28/57

GUILFORD-BRATTLEBORO
 Surveyed by Fegan 11/56
 Drawn by Miller 11/56
 Traced by Aja 11/56
 Project I No 604-1(6)
 Sheet 20 of 182

THREE CABLE GUARD RAIL + STEEL POSTS
 LI. 347+00 - 353+00

THREE CABLE GUARD RAIL + STEEL POSTS
 347+00 - 348+34.12



Δ 45° 25' RA
 D 2' 30"
 R 2292.0'
 T 951.1'
 L 1816.7'
 E 192.6'

#25-D NORRIS W & ANNIS DRURY
 (A 3 353) STA 328+00 - 353+15.1
 W.D. 12/23/57
 RECORDED - GUILFORD - BK 33 - PG 504 - 12/28/57

PARCEL	GRANTOR	NATURE OF TITLE	DATE	TOWN	RECORDING VOL.	DATA PAGE	DATE
26A	WOODROW F & IRMA P SHAW	COND.	10-19-56	GUILFORD	33	349-365	10-19-56
49	ERNEST G. & DOROTHE M. KINSMAN	W.D.	7-26-57	GUILFORD	33	479	10-5-57

ERNEST G. & DOROTHE M. KINSMAN
 #49
 20 ACRES ±
 STA. NW COR. RADIALLY FROM 353+40

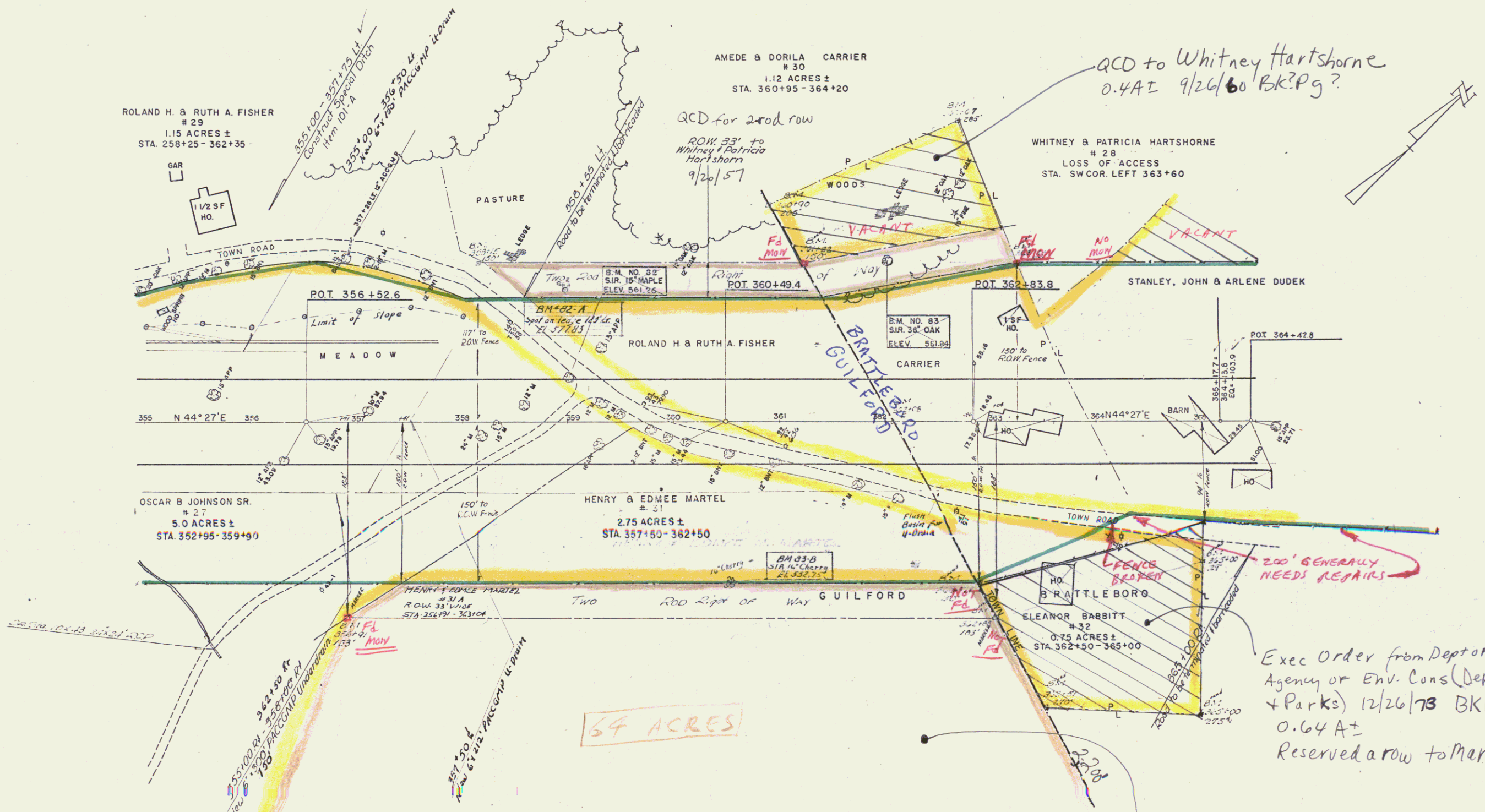
GUILFORD - BRATTLEBORO

SURVEYED BY POGAR 4/55
 DRAWN BY MILLER 11/55
 TRACED BY AJA 11/55
 PROJECT I NO. 0014(6)
 SHEET 22 OF 182

STEEL GUIDE POSTS
355+20 120' Lt
365+60 110' Lt

DRILLING OF SOLID ROCK SUBGRADE, ITEM 114-A
BLASTING OF SOLID ROCK SUBGRADE, ITEM 114-B
357+50 - 365+00

DEMOLITION AND REMOVAL OF BUILDING, ITEM 586
363+20 Lt
363+25 E
363+50 Rt
364+80 E
365+00 Lt



PARCEL	GRANTOR	NATURE OF TITLE	DATE	TOWN	RECORDING VOL.	DATA PAGE	DATE
27	OSCAR B. JOHNSON SR	W D	7-27-57	GUILFORD	33	456	8-2-57 SEE SHEET 22
28	WHITNEY & PATRICIA HARTSHORNE	JUDGMENT	2-12-57	BRATTLEBORO	99	326	7-26-57
29	ROLAND H. & RUTH A FISHER	COND.	10-19-55	GUILFORD	33	349-365	10-19-55
30	AMEDE & DORILA CARRIER	W D	7-22-57	BRATTLEBORO	99	352	8-1-57
31	HENRY & EDMEE MARTEL	W D	8-13-57	GUILFORD	33	478	8-31-57
32	ELEANOR BABBITT	W D	7-23-57	BRATTLEBORO	99	357	8-1-57

86.8 A± in Guilford from State Hwy 32 to Dept of Forests & Parks 12/28/62 BK? Pg

GUILFORD-BRATTLEBORO
SURVEY BY POSAR 4/55
DRAWN BY MILLER 11/55
TRACED BY MILLER 11/55
PROJECT I NO. 801-(6)
SHEET 24 OF 152

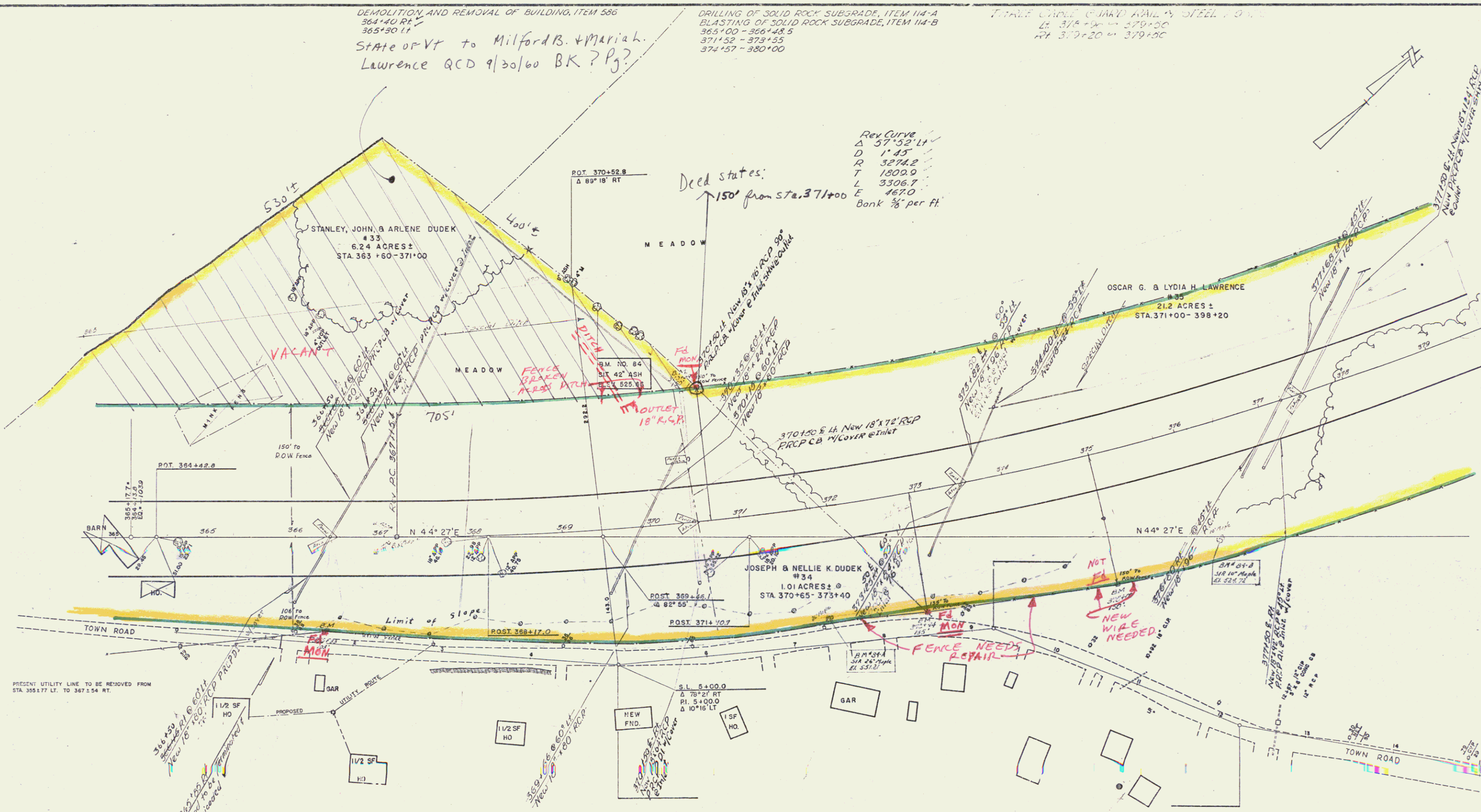
DEMOLITION AND REMOVAL OF BUILDING, ITEM 586
 364+40 RT
 365+30 LT
 State of VT to Milford B. & Mariah
 Lawrence QCD 9/30/60 BK? Pg?

DRILLING OF SOLID ROCK SUBGRADE, ITEM 114-A
 BLASTING OF SOLID ROCK SUBGRADE, ITEM 114-B
 365+00 - 366+48.5
 371+52 - 373+55
 374+57 - 380+00

THREE CABLE GUARD RAIL w/ STEEL POINTS
 LT 378+00 - 379+00
 RT 379+20 - 379+50

Recurve
 Δ 57°52' LT
 D 1'45"
 R 3274.2
 T 1809.9
 L 3306.7
 E 467.0
 Bank $\frac{3}{4}$ " per ft.

Deed states:
 150' from Sta. 371+00



PRESENT UTILITY LINE TO BE REMOVED FROM
 STA. 355+77 LT. TO 367+54 RT.

PARCEL	GRANTOR	NATURE OF TITLE	DATE	TOWN	VOL	PAGE	DATE
33	STANLEY, JOHN, & ARLENE DUDEK	JUDGMENT	8-1-57	BRATTLEBORO	99	365	8-13-57 SEE SHEET 24
34	JOSEPH & NELLIE K DUDEK	JUDGMENT	8-1-57	BRATTLEBORO	99	365	8-13-57
35	OSCAR G. & LYDIA H. LAWRENCE	JUDGMENT	2-12-57	BRATTLEBORO	99	324	7-26-57 SEE SHEET 28 & 30

GUILFORD-BRATTLEBORO
 Proj. No. 601-167 91/76
 Sheet 26 of 182

DRILLING OF SOLID ROCK SUBGRADE, ITEM 114-A
 BLASTING OF SOLID ROCK SUBGRADE, ITEM 114-B
 380+00 - 390+67

THREE CABLE GUARD RAIL w/ STEEL POSTS
 LH 380+00 - 390+00 LH
 RH 382+33 - 393+53 RH
 LH 391+41 - 396+00 LH

THREE CABLE GUARD RAIL w/ STEEL POSTS
 LH 378+96 - 390+00
 RH 379+20 - 393+53
 LH 391+41 - 396+00

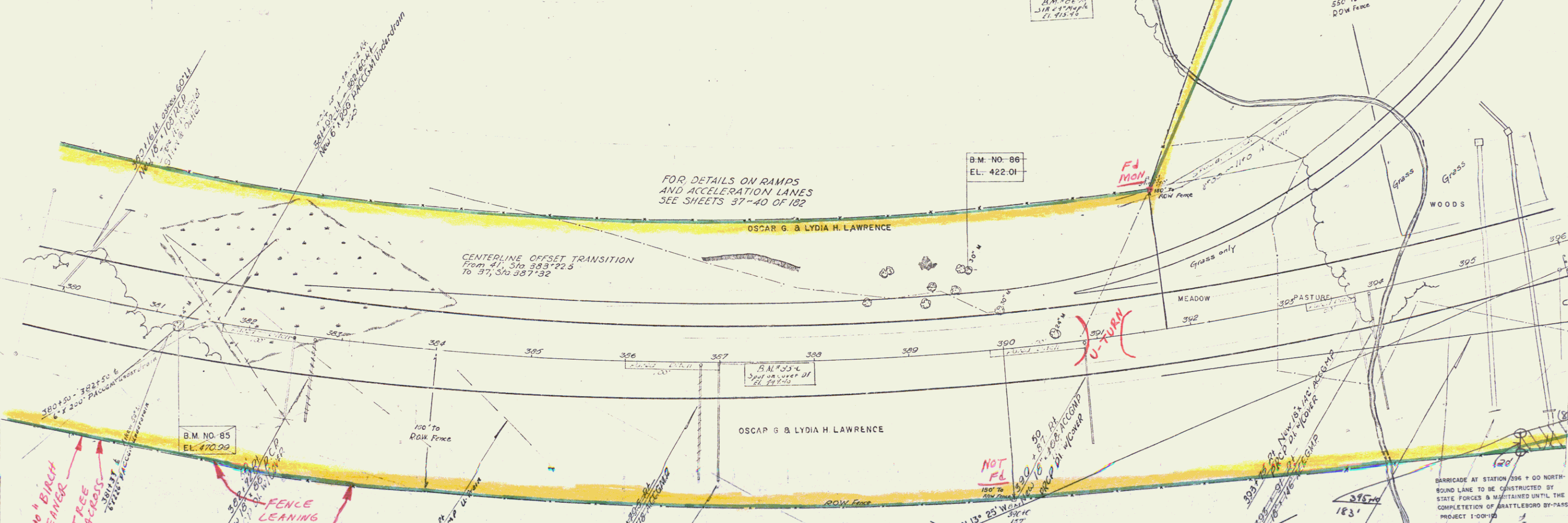
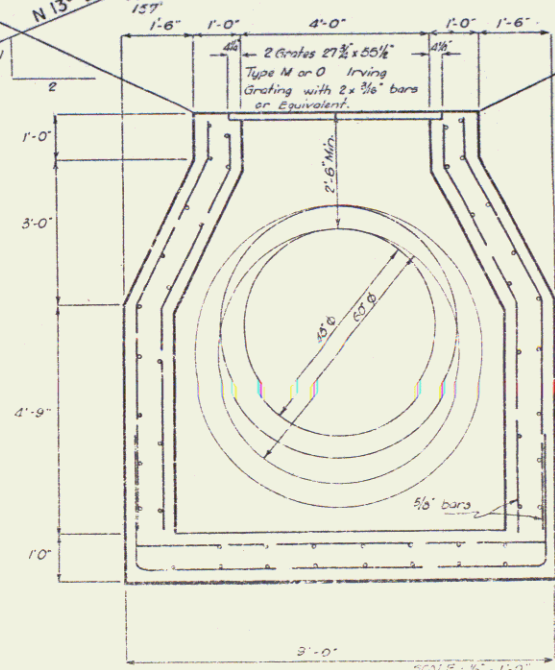
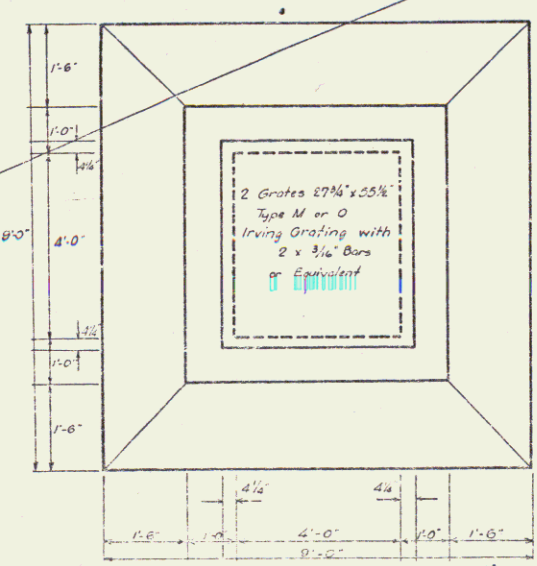
FOR DETAILS ON RAMPS
 AND ACCELERATION LANES
 SEE SHEETS 37-40 OF 182

OSCAR G. & LYDIA H. LAWRENCE

CENTERLINE OFFSET TRANSITION
 From 41' Sta 383+22.5
 To 37' Sta 387+32

OSCAR G & LYDIA H LAWRENCE

COW PASTURE
 1 ELECTRIC WIRE
 OUTSIDE R.O.W. FENCE



B.M. NO. 85
 EL. 470.99

B.M. NO. 86
 EL. 422.01

B.M. 85-A EL. 479.84
 Spot on ledge
 Sta 381+00

B.M. 86-B
 50 Rock
 EL. 422.64

494' to side line
 ROT. 17+00.0
 Δ 48°41' Lt.

REV. P.I. 385+25.3 =
 382+12.2

GUILFORD - BRATTLEBORO
 Project 1-001-167 31161
 Surveyed
 Plotted
 Traced
 Sheet 28 of 182

THREE CABLE GUARD RAIL w/ STEEL POSTS
396+00 - 402+21 LT
397+59 - 403+27 RT
404+20 - 405+04 LT
405+46 - 407+86 LT RT

IN MEDIAN AT BRIDGE
APPROACHES
402+91'
404+89'

JOSEPH C. & CORINNE M. GROVER
43
0.87 ACRES ±
STA. NE COR. LEFT 403+87

JOHN WROBEL
36
2.94 ACRES ±
STA. 394+40 - 399+60

FOR RAMP AND ACCELERATION
AND DECELERATION LANE
DETAILS SEE SHEETS 37-40
OF 182

THREE CABLE GUARD
RAIL w/ STEEL POSTS
LT 396+00 - 403+27
RT 404+20 - 405+04
IN MEDIAN @ BRIDGE
402+91'
404+89'

OSCAR G. & LYDIA H. LAWRENCE

HAROLD E. & GRACE B. SHERMAN
39
1.55 ACRES ±
STA. 399+90 - 404+100

DRILLING OF SOLID ROCK SUBGRADE, ITEM 114-A
BLASTING OF SOLID ROCK SUBGRADE, ITEM 114-B
401+50 - 412+00

JOHN D. LATCHIS

LILLIAN J. POTTER &
ESTATE OF STARR D. COWELL
41
0.52 ACRES ±
STA. 400+55 - 403+00

FLOYD & GRACE A. WISELL
40
0.50 ACRES ±
STA. 402+40 - 404+84

WOODROW F. & IRMA P. SHAW
26B
3.68 ACRES ±
STA. 403+25 - 405+05

404+89.50
END BRIDGE
RESUME ROADWAY

P.O.T. 403+82.3 =
417+33.0, FI 57(B)
Δ 48° 33'

P.O.T. 405+47.1

P.O.T. 406+50.0

P.O.T. 411+24.3

24' pavement width

24' pavement width

B.M. NO. 87
EL. 413.79

P.O.S.T. 401+91.0
P.O.S.T. 401+43.5

SHERMAN B. & MARGARET MANNING
44
2.47 ACRES ±
STA. 403+00 - 407+23

P.O.T. 419+83.0, FI 57(B)
P.O.T. 94+19.0, U.I. 59(C)

B.M. NO. 89
EL. 480.08

ROBERT J. & BERNICE A. SMITH
51
0.87 ACRES ±
STA. 406+40 - 409+100

MICHAEL & MARY WROBEL
37
6.0 ACRES ±
STA. 397+10 - 404+85

401+31
247'

LEANING DOWN, &
BROKEN

END FENCE

DEMOLITION AND REMOVAL OF BUILDING, ITEM 580

- 400+00 Lt. 450' ±
- 401+00 Lt. 500' ± See Sheet 38
- 401+10 Lt. 500' ± See Sheet 38
- 401+90 Lt. 350' ±
- 401+90 Lt. 350' ±
- 402+40 Lt. 250' ±
- 402+90 Lt. 200' ±
- 403+10 Lt.
- 403+25 Lt.
- 404+20 Rt.
- 404+30 Rt.
- 406+20 Rt.
- 406+95 Rt.
- 408+00 Rt.
- 408+60 Rt.
- 408+90 Rt.
- 409+60 Rt. NOT RECORDED
- 410+00 Rt.
- 410+05 Rt.
- 410+30 Rt.
- 410+50 Rt.
- 410+80 Rt.

State of VT to 230'
Marcraft Realty Corp.
by QCD 4-15-60
BK 103, Pg 482

ERNEST & MARGARET WILFONG
45
1.00 ACRES ±
STA. 402+90 - 405+15

FI 1" BOLT IN ROCK

BARRICADES TO BE CONSTRUCTED
BY STATE FOR AND MAINTAINED
UNTIL THE COMPLETION OF
BATTLEFIELD BY-PASS PROJECT
1-00-112

GILBERT R. & FLORENCE T. WOODWORTH
48
1.75 ACRES ±
STA. 408+00 - 412+100

TOTAL AREA
1 A ±

SP
127

GUILFORD-BATTLEFIELD
Surveyed by Peter W. 11/56
Drawn by Miller 11/56
Traced by A.D. 11/56
Project I No. 91-112
Sheet 30 of 132

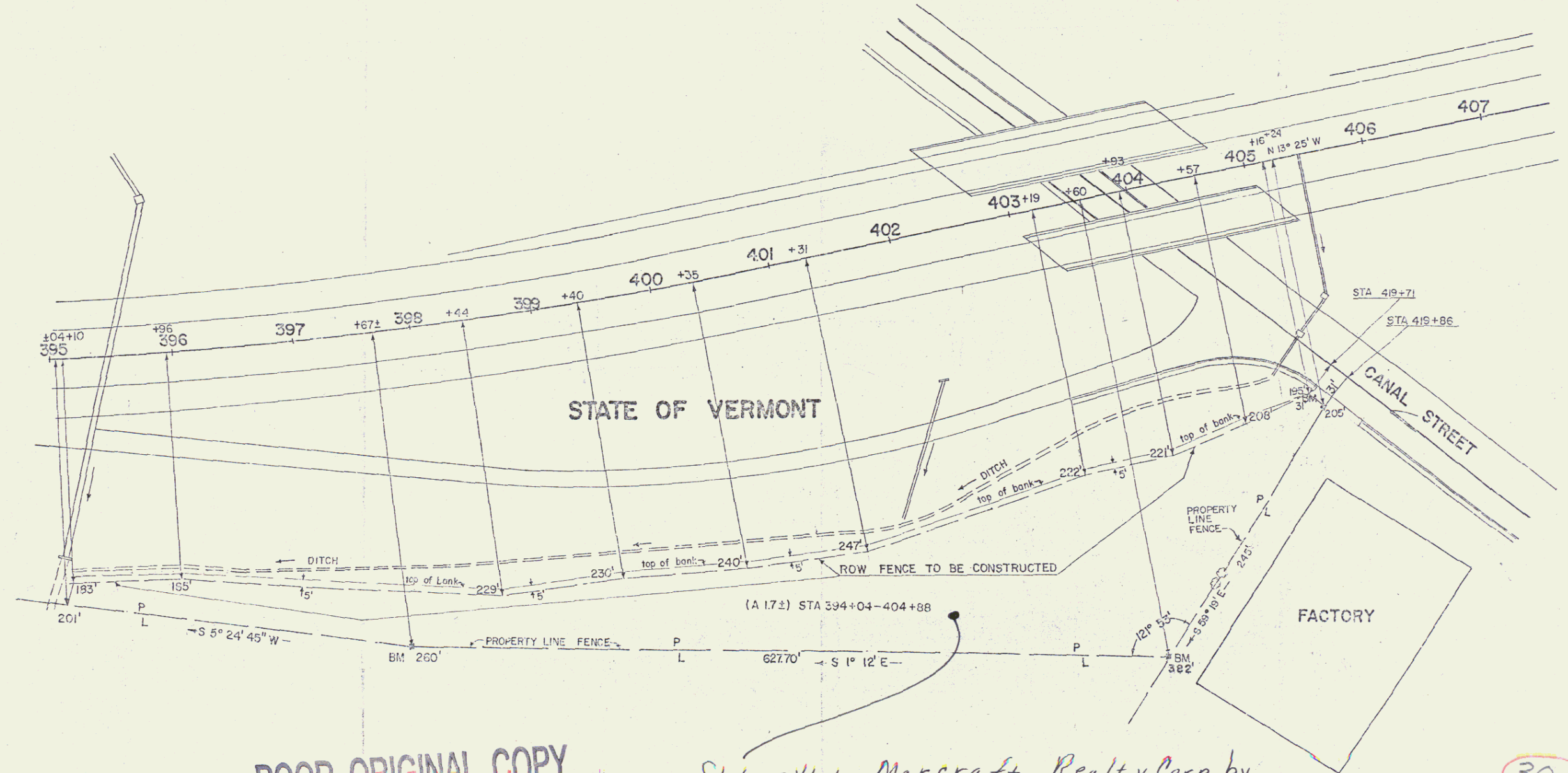
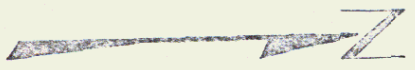
SEE SHEET 29 FOR RECORDING DATA

NEW
ADDITION

PI 90+88.4 =
90+87.9

MATCH TO SHEET
49

RIGHT-OF-WAY DIVISION
 TOWN FILE
 PERPETUAL
 Town of Brattleboro I 91
 (To Be Returned To R.O.W. Division)



POOR ORIGINAL COPY

State of Vt to Marcraft Realty Corp. by
 Q.C.D. 4/15/60, BK103 Pg 482

SCALE 1" = 50'

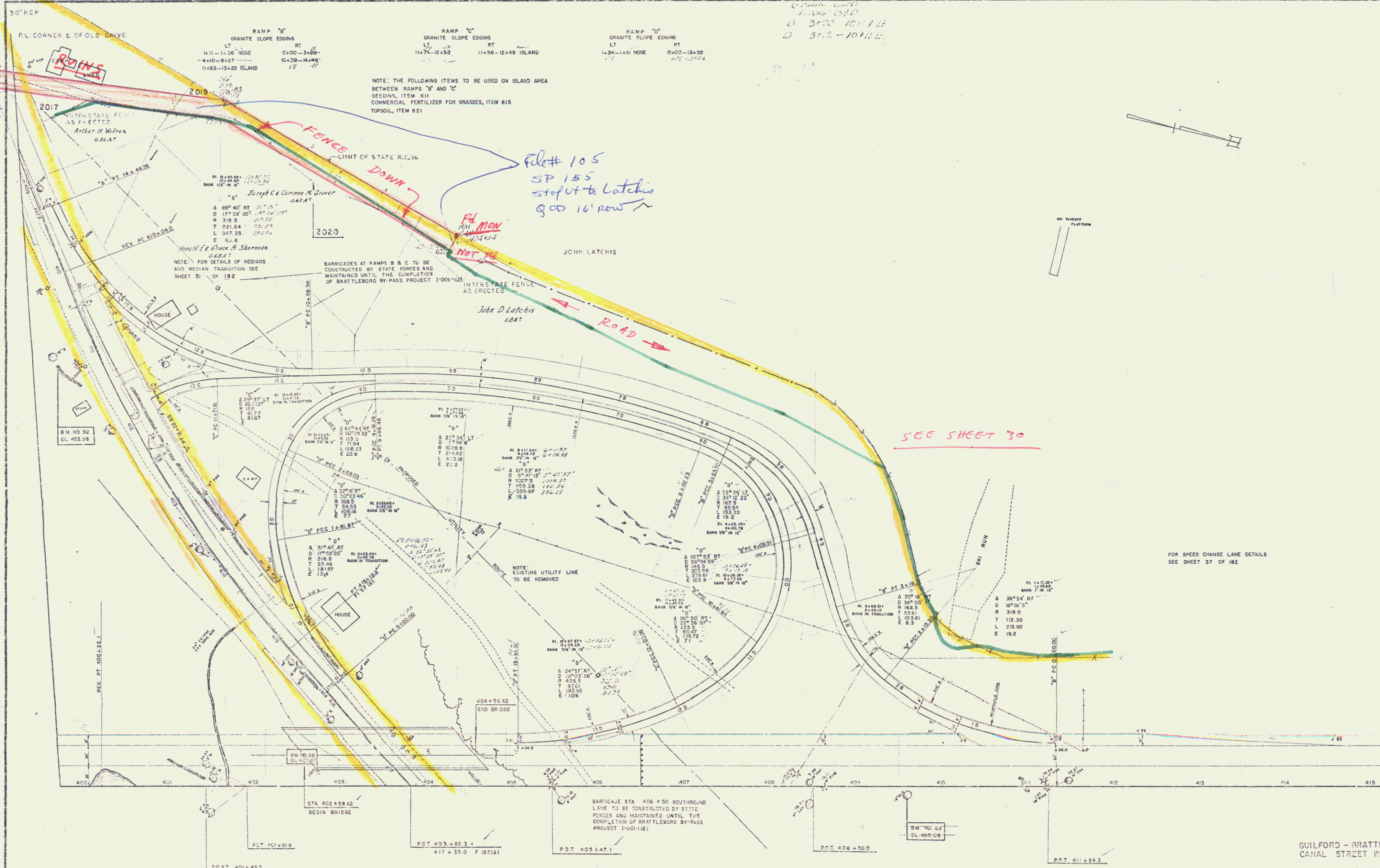
GUILFORD-VERNON-BRATTLEBORO
 FI IN 91-1 (1)

30A

68

JAN 3 1992

8



3170 10/1/14
 312-10/1/14

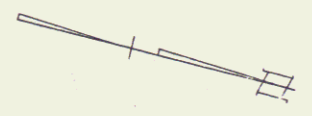
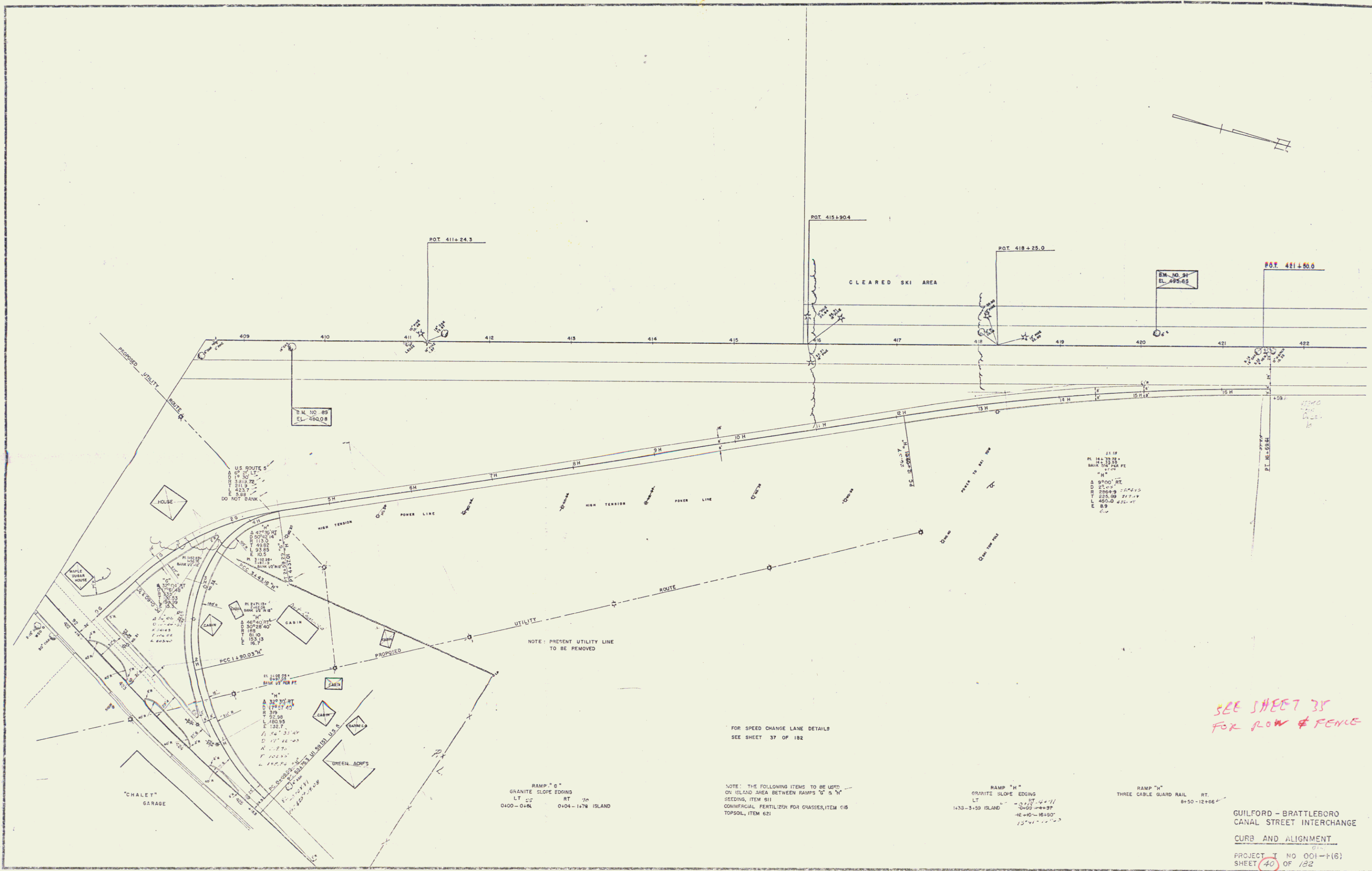
NOTE: THE FOLLOWING ITEMS TO BE USED ON ISLAND AREA
 BETWEEN RAMPS "B" AND "C"
 SEEDING, ITEM 611
 COMMERCIAL FERTILIZER FOR GRASSES, ITEM 615
 TOPSOIL, ITEM 621

File # 105
 SP 155
 stop at Latchis
 800 16' row

SEE SHEET 30

FOR SPEED CHANGE LINE DETAILS
 SEE SHEET 37 OF 182

GUILFORD - BRATTLEBORO
 CANAL STREET INTERCHANGE
 CURB AND ALIGNMENT
 PROJECT 1 NO 001-1(G)
 SHEET 30 OF 132



POT 411+24.3

POT 415+90.4

POT 418+25.0

POT 421+80.0

BM. NO. 31
EL. 495.85

BM. NO. 89
EL. 480.08

11.18
PL 14+33.75
D 22.00
BANK 5:1 PER FT.
H
A 9'00" RT
D 22.00
E 286.89
T 235.89
L 450.0
E 8.9
C.L.

PL 14+33.75
D 22.00
BANK 5:1 PER FT.
H
A 32' 30" RT
D 22.00
E 286.89
T 235.89
L 450.0
E 8.9
C.L.

NOTE: PRESENT UTILITY LINE TO BE REMOVED

FOR SPEED CHANGE LANE DETAILS SEE SHEET 37 OF 182

NOTE: THE FOLLOWING ITEMS TO BE USED ON ISLAND AREA BETWEEN RAMP G & H SEEDING, ITEM 811 COMMERCIAL FERTILIZER FOR GRASSES, ITEM 618 TOPSOIL, ITEM 621

RAMP "G"
GRANITE SLOPE EDGING
LT 05 RT 70
0+00-0+64 0+04-1+78 ISLAND

RAMP "H"
GRANITE SLOPE EDGING
LT 05 RT 70
1+33-3+50 ISLAND
12+10-16+90
15+41-17+35

RAMP "H"
THREE CABLE GUARD RAIL RT.
8+50-12+66

SEE SHEET 35 FOR ROW & FENCE

GUILFORD - BRATTLEBORO CANAL STREET INTERCHANGE

CURB AND ALIGNMENT

PROJECT NO 001-1(6)
SHEET 40 OF 182

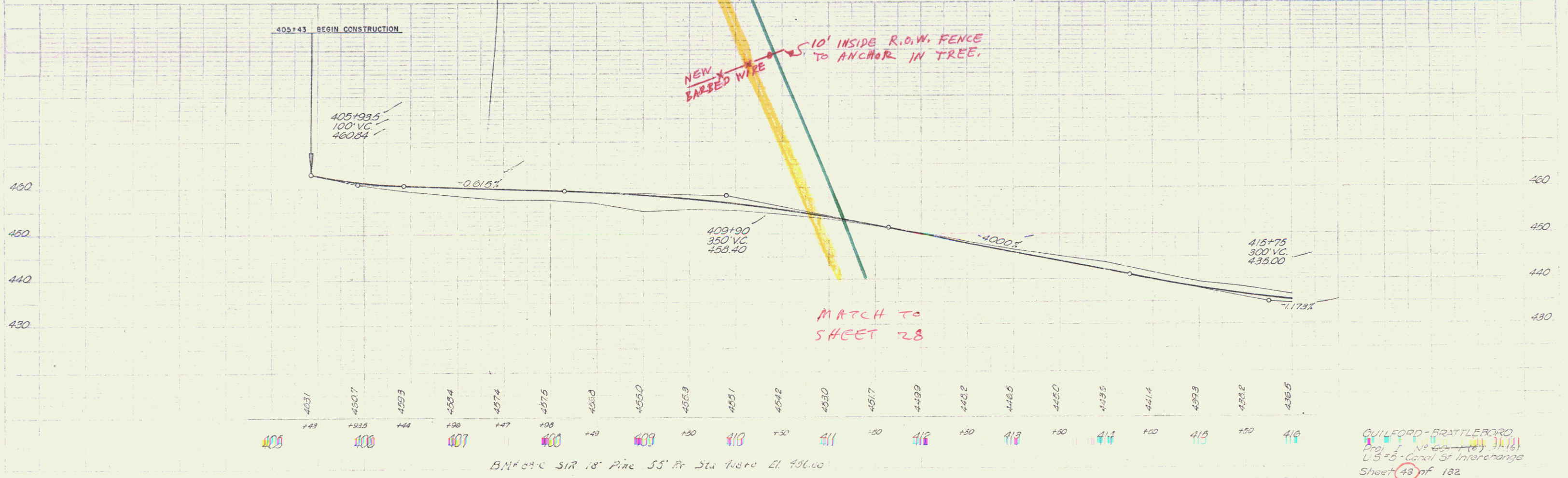
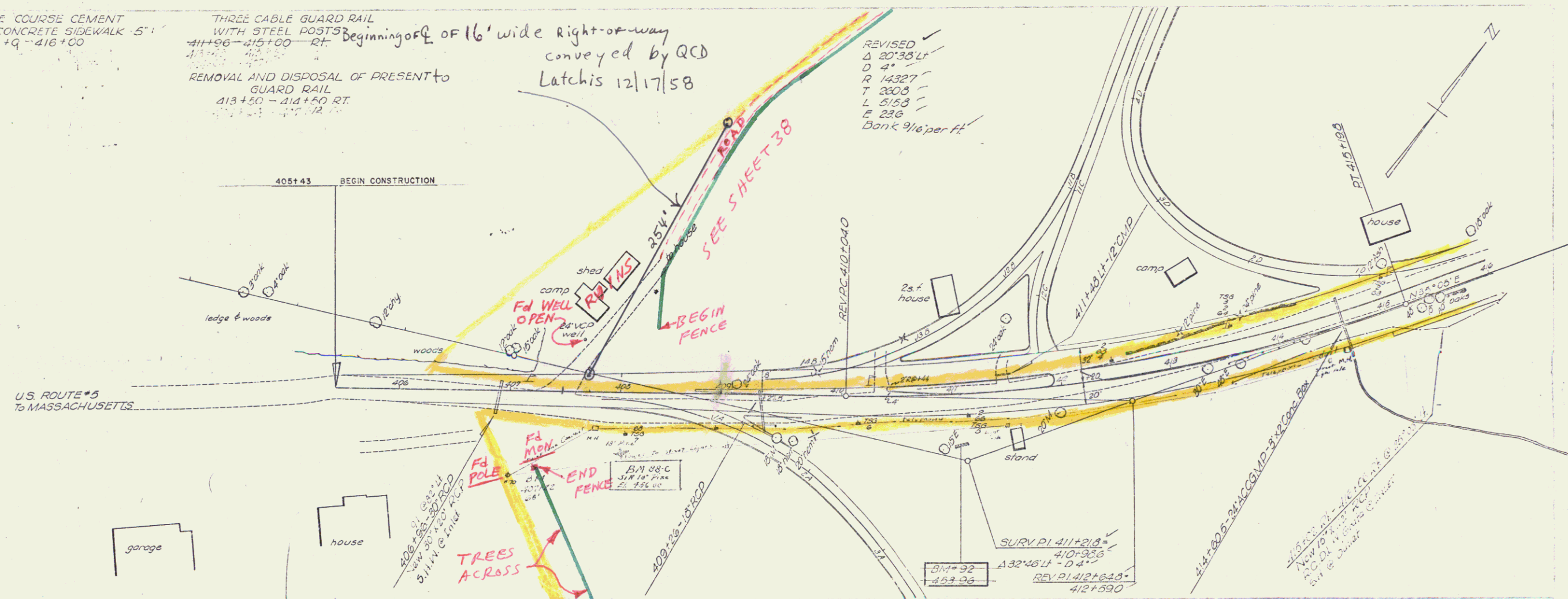
GRANITE CURB
Island Rt
410+42-411+94
412+19-416+09
71.8+30
GRANITE SLOPE EDGING
Lt
410+54-411+73

ONE COURSE CEMENT
CONCRETE SIDEWALK - 5'
415+9-416+00

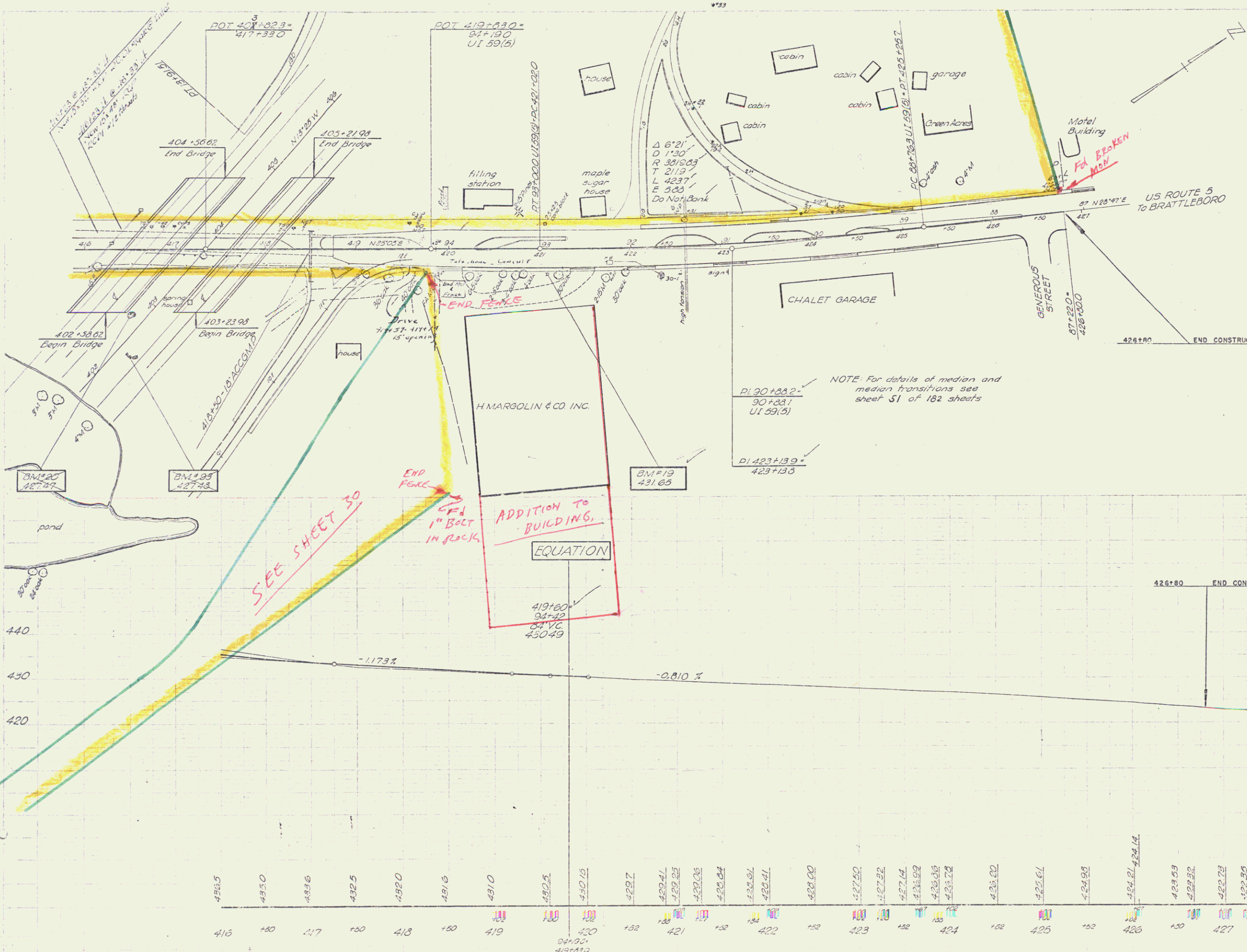
THREE CABLE GUARD RAIL
WITH STEEL POSTS
411+96-415+00 RT
REMOVAL AND DISPOSAL OF PRESENT
GUARD RAIL
413+50-414+50 RT

Beginning of 16' wide Right-of-way
conveyed by QCD
Latches 12/17/58

REVISED
Δ 20°38' LT
D 4"
R 14327
T 2603
L 5153
E 236
Bank 9/16 per ft



MATCH TO SHEET 30



- GRANITE CURB Island
 - 416+00-416+30
 - 416+00-416+47
 - 416+60-419+73.5
 - 419+62-419+92
 - 420+29.5-421+30
 - 422+23.5-422+95.5
 - 423+25.5-424+08
 - 424+39-424+98.5
- GRANITE SLOPE EDGING Lt.
 - 422+22 - 423+08
- ONE COURSE CEMENT CONCRETE SIDEWALK
 - 416+00 - 416+47 Rt. (5')
 - 43
- ONE COURSE CEMENT CONCRETE SIDEWALK
 - 419+70 - 420+17 (8')
 - 29
- EXCAVATION & REMOVAL OF ROAD SURFACE ON DISCONTINUED ROADWAYS (Installation of Islands in Existing Pavement)
 - 419+60 - 419+73
 - 420+30 - 421+31
 - 422+29 - 422+97
 - 423+27 - 424+08
 - 424+40 - 424+69
- REMOVAL & DISPOSAL of PRESENT GUARD RAIL
 - 416+65 - 417+75 Rt. - 110'
- Extra Removal of Road Surface along side Rte 5
 - 419+53 - 419+60
 - 421+69 - 422+82
 - 424+60 - 424+69
 - 422+32 - 423+10
 - 423+10 - 424+10

US ROUTE 5 ACCESS OR CANAL STREET INTERCHANGE
 Prof. N. W. ... (S) 911(1)
 Sheet 49 of 182

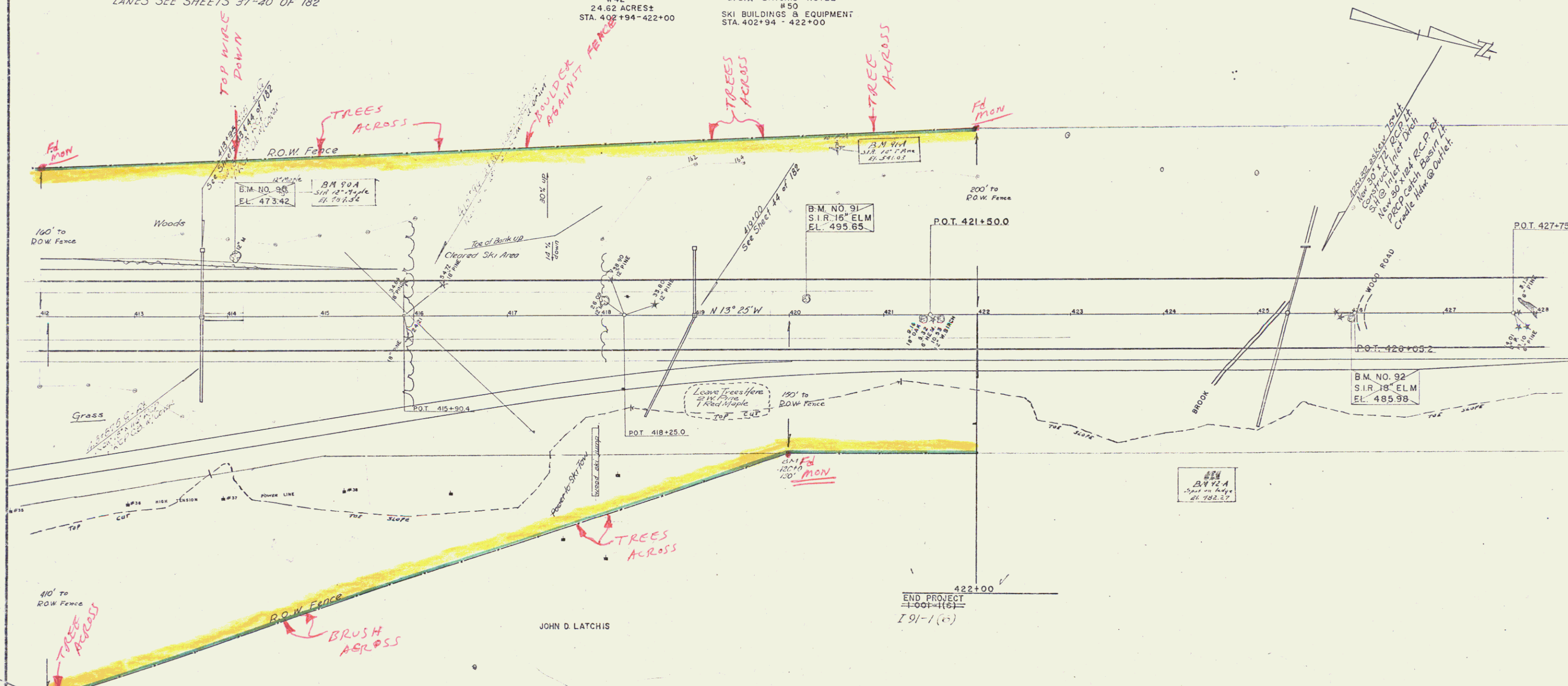
THREE CABLE GUARD RAIL w/ STEEL POSTS
413+48 - 417+00 R.L.V.

DRILLING OF SOLID ROCK SUBGRADE, ITEM 114-A
BLASTING OF SOLID ROCK SUBGRADE, ITEM 114-B
412+00 - 414+00
415+00 - 422+00

FOR DETAILS OF RAMPS AND
ACCELERATION AND DECELERATION
LANES SEE SHEETS 37-40 OF 182

JOHN D. LATCHIS
#42
24.62 ACRES±
STA. 402+94 - 422+00

JOHN D. LATCHIS & SPERO D. LATCHIS
D/B/A LATCHIS HOTEL
#50
SKI BUILDINGS & EQUIPMENT
STA. 402+94 - 422+00



JOHN D. LATCHIS

END PROJECT
100'-1(6)
I 91-1 (c)

PARCEL	GRANTOR	NATURE OF TITLE	DATE	RECORDING DATA			
				TOWN	VOL.	PAGE	DATE
42	JOHN D. LATCHIS	JUDGMENT	3-11-57	BRATTLEBORO	93	367	8-13-57 SEE SHEET 38
50	JOHN D. LATCHIS & SPERO D. LATCHIS D/B/A LATCHIS HOTEL	JUDGMENT	3-11-57	BRATTLEBORO	99	357	8-13-57

GUILFORD -
BRATTLEBORO
PROJ. I NO. 91-1(6)
SHEET 35 OF 182