

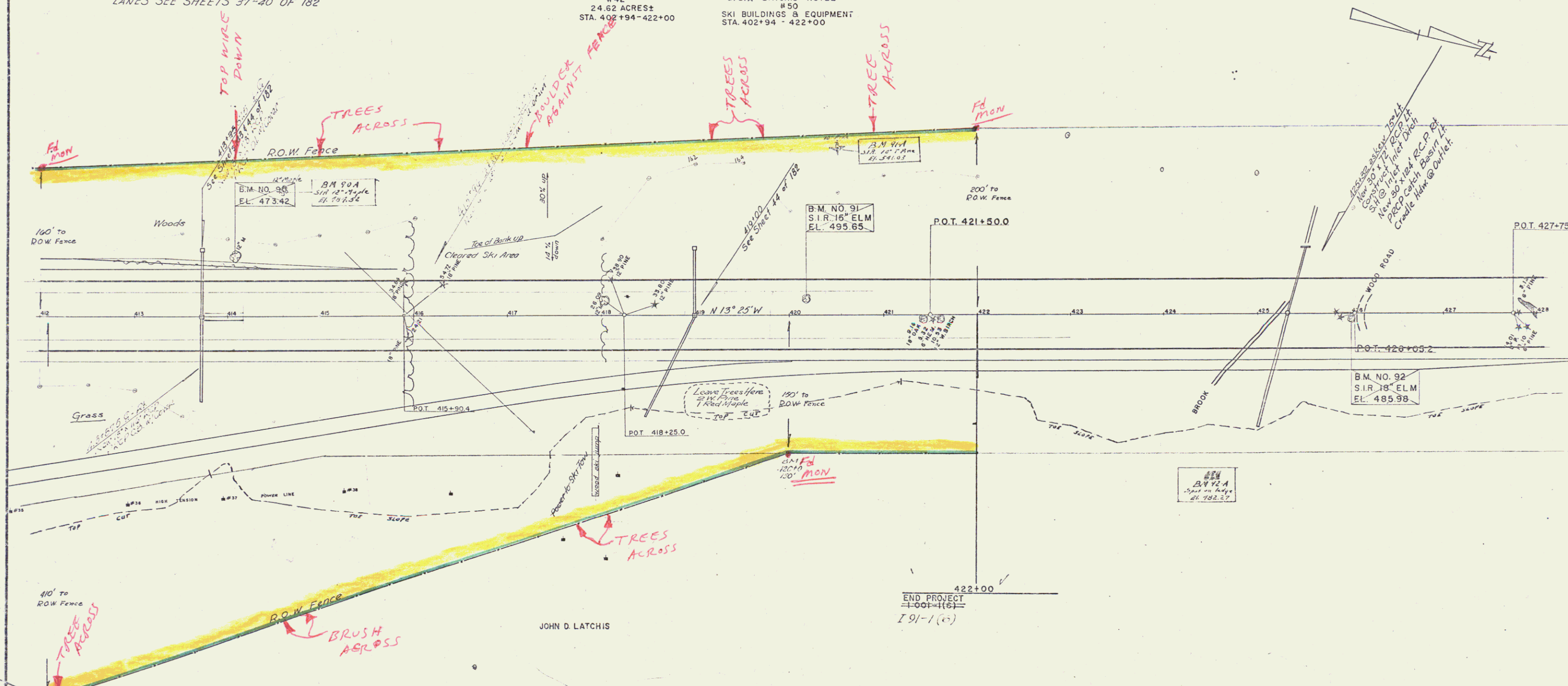
THREE CABLE GUARD RAIL w/ STEEL POSTS
413+48 - 417+00 R.L.V.

DRILLING OF SOLID ROCK SUBGRADE, ITEM 114-A
BLASTING OF SOLID ROCK SUBGRADE, ITEM 114-B
412+00 - 414+00
415+00 - 422+00

FOR DETAILS OF RAMPS AND
ACCELERATION AND DECELERATION
LANES SEE SHEETS 37-40 OF 182

JOHN D. LATCHIS
#42
24.62 ACRES±
STA. 402+94 - 422+00

JOHN D. LATCHIS & SPERO D. LATCHIS
D/B/A LATCHIS HOTEL
#50
SKI BUILDINGS & EQUIPMENT
STA. 402+94 - 422+00



JOHN D. LATCHIS

END PROJECT
100'-1(6)
I 91-1 (c)

PARCEL	GRANTOR	NATURE OF TITLE	DATE	RECORDING DATA			
				TOWN	VOL.	PAGE	DATE
42	JOHN D. LATCHIS	JUDGMENT	3-11-57	BRATTLEBORO	93	367	8-13-57 SEE SHEET 38
50	JOHN D. LATCHIS & SPERO D. LATCHIS D/B/A LATCHIS HOTEL	JUDGMENT	3-11-57	BRATTLEBORO	99	357	8-13-57

GUILFORD -
BRATTLEBORO
PROJ. I NO. 91-1(6)
SHEET 35 OF 182