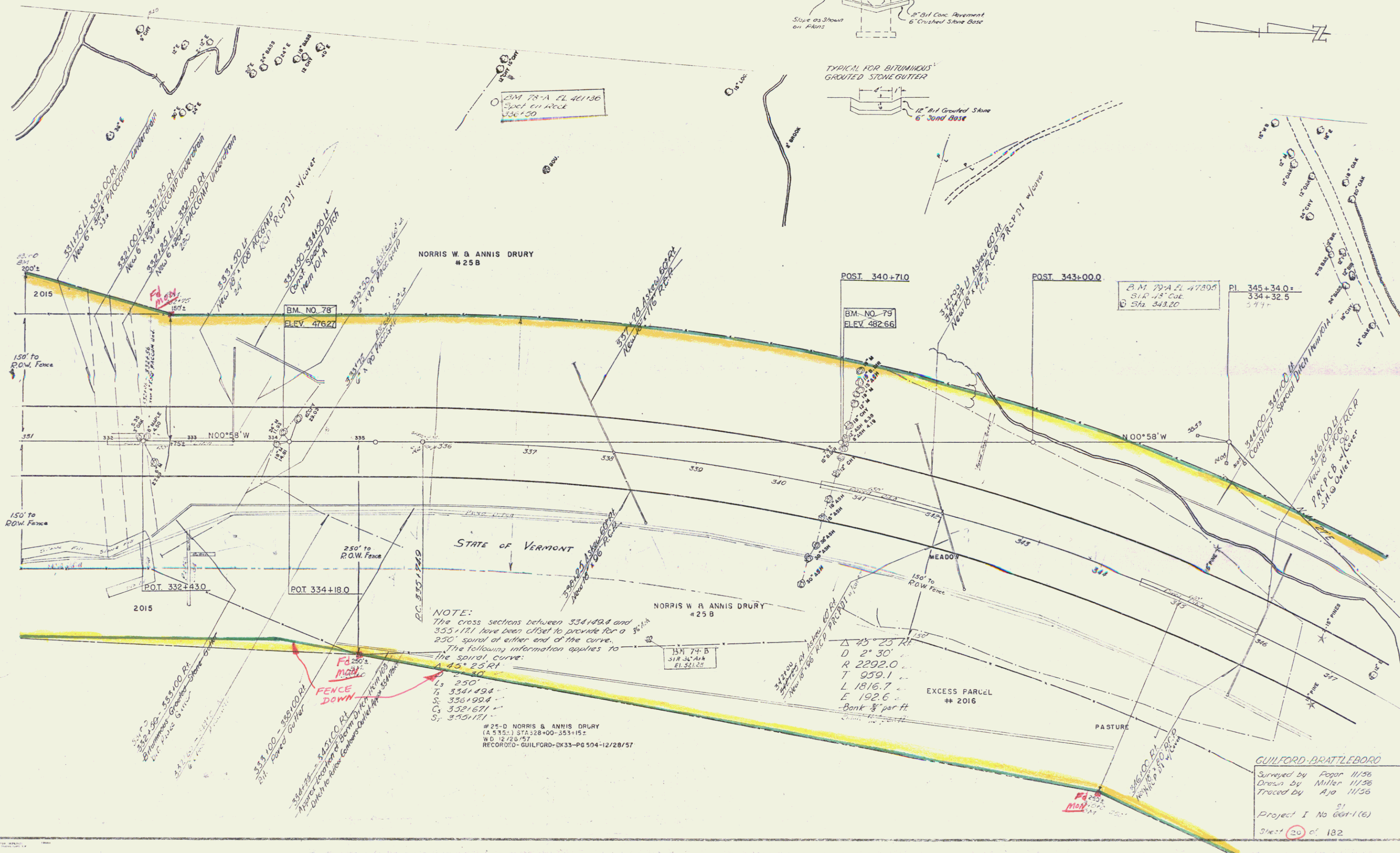
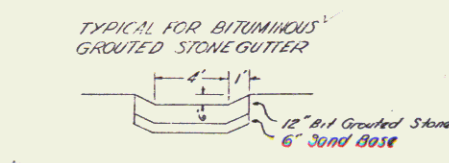
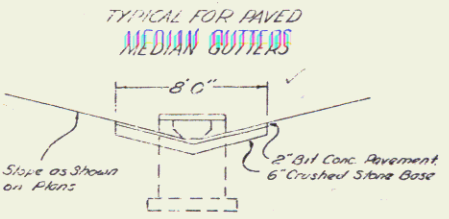


THREE CABLE GUARD RAIL w/ STEEL POSTS  
 Rt 331+00 - 333+12  
 Lt 331+00 - 333+16  
 Lt 341+64 - 341+00

THREE CABLE GUARD RAIL w/ STEEL POSTS  
 331+00 - 332+00 Rt  
 331+00 - 333+40 Lt  
 342+46 - 347+00 Lt



NOTE:  
 The cross sections between 334+49.4 and 355+171 have been offset to provide for a 250' spiral at either end of the curve.  
 The following information applies to the spiral curve:  
 Δ 45° 25' Rt  
 Ls 250  
 Ts 334+49.4  
 Ss 336+99.4  
 Cs 352+671  
 Ss 355+171

# 25-D NORRIS & ANNIS DRURY  
 (A 535) STA 328+00-353+15±  
 W.D. 12/28/57  
 RECORDED - GUILFORD - QK33-P6 504-12/28/57

Δ 45° 25' Rt  
 D 2° 30'  
 R 2292.0  
 T 959.1  
 L 1816.7  
 E 192.6  
 Bank 3/4 per ft.

GUILFORD-BRATTLEBORO  
 Surveyed by Fegan 11/56  
 Drawn by Miller 11/56  
 Traced by Aja 11/56

Project I No 604-1(6)  
 Sheet 20 of 182