

Three Cable Guard Rail w/ Steel Posts
95+00.0 - 105+92.1
106-115

Stone Fill for Slope Protection
Item 522
98+00 - 100+00 L.V.
101+00 - 103+60 L.V.

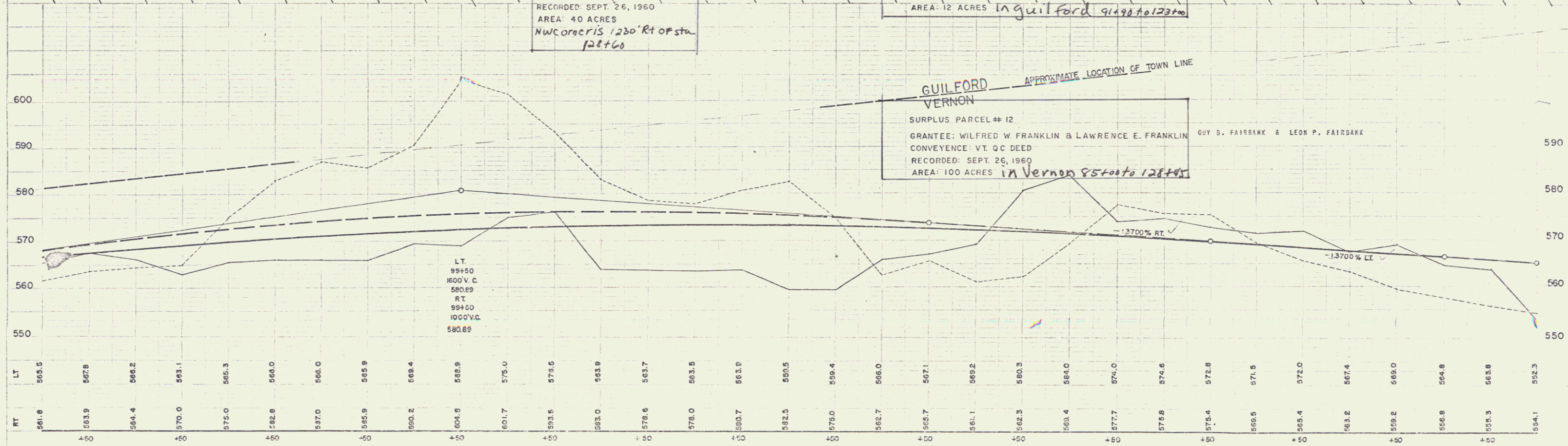
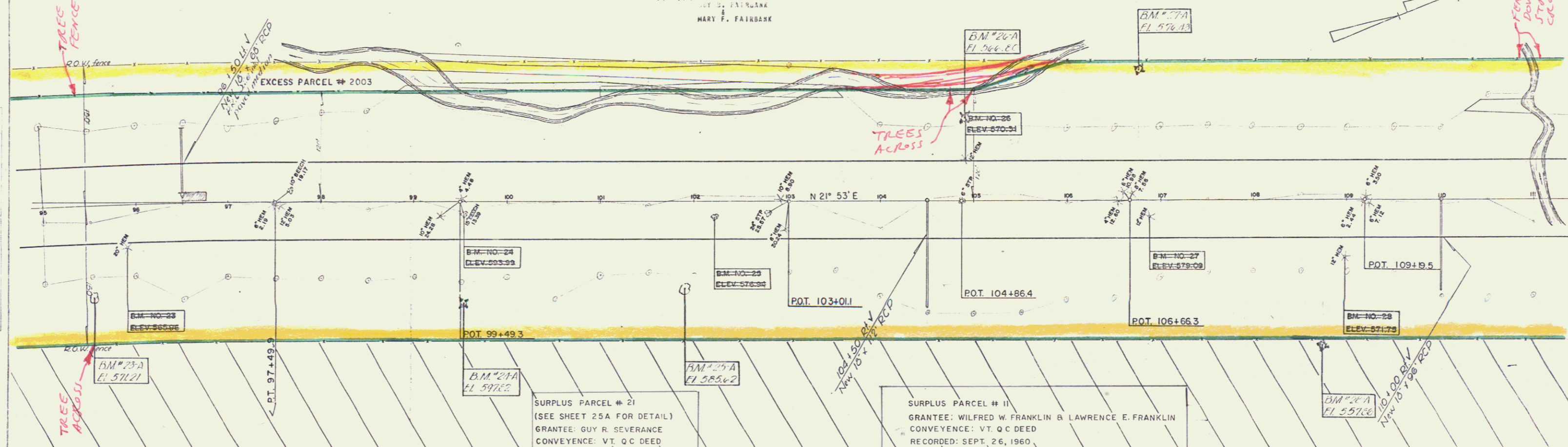
Channel Excavation of Earth & Rock
Items 106 A & B
96+90 - 103+60 L.V.

Excavation of Central Median in Station
POT 97+49.3
101+00 - 103+60 L.V.

Drilling & Blasting of Solid Rock Subgrade
Items 114 A & B
96+00 - 111+00 V

Stone Fill for Slope Protection
Item 522
110+25 - 111+00 L.V.

LET. S. FAIRBANK
MARY F. FAIRBANK



LT 565.5 567.8 566.2 563.1 565.3 566.0 566.0 565.9 566.4 566.8 561.7 575.0 575.5 563.9 563.7 563.5 563.0 563.0 562.5 562.5 562.7 561.1 560.2 560.3 560.4 560.4 577.7 575.6 575.4 572.8 571.5 572.0 567.4 566.0 564.8 563.8 563.3 564.1

RT 561.8 563.9 564.4 570.0 575.0 566.8 597.0 595.9 590.2 604.9 601.7 593.5 593.0 579.6 576.0 580.7 582.5 575.0 562.7 565.7 561.1 562.3 560.4 567.7 575.6 575.4 575.4 566.5 565.4 563.2 569.2 566.0 564.8 563.8 563.3 564.1

95 450 96 460 97 470 98 480 99 490 100 500 101 510 102 520 103 530 104 540 105 550 106 560 107 570 108 580 109 590 110 600 111

B.M. NO. 23 - SIR 20 HEMLOCK 43 RT - STA 95+60 - EL 563.95
B.M. NO. 24 - SIR 15 BEECH 15 RT - STA 99+53 - EL 590.99
B.M. NO. 25 - SIR 10 MAPLE 17 RT - STA 102+21 - EL 576.94
B.M. NO. 26 - SIR 12 HEMLOCK 64 LT - STA 104+90 - EL 570.31
B.M. NO. 27 - SIR 12 HEMLOCK 17 RT - STA 106+87 - EL 579.09
B.M. NO. 28 - SIR 12 HEMLOCK 61 RT - STA 108+98 - EL 571.75

110 GUILFORD - VERNON
PROJECT IN NO. 001-1(4)
SHEET 25 OF 128