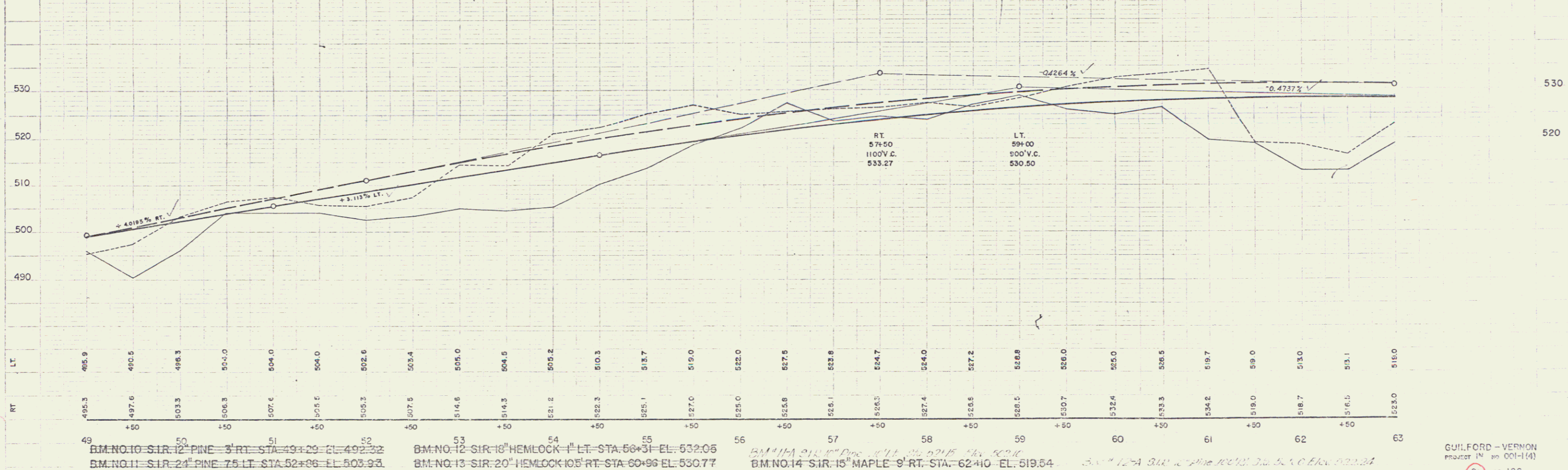
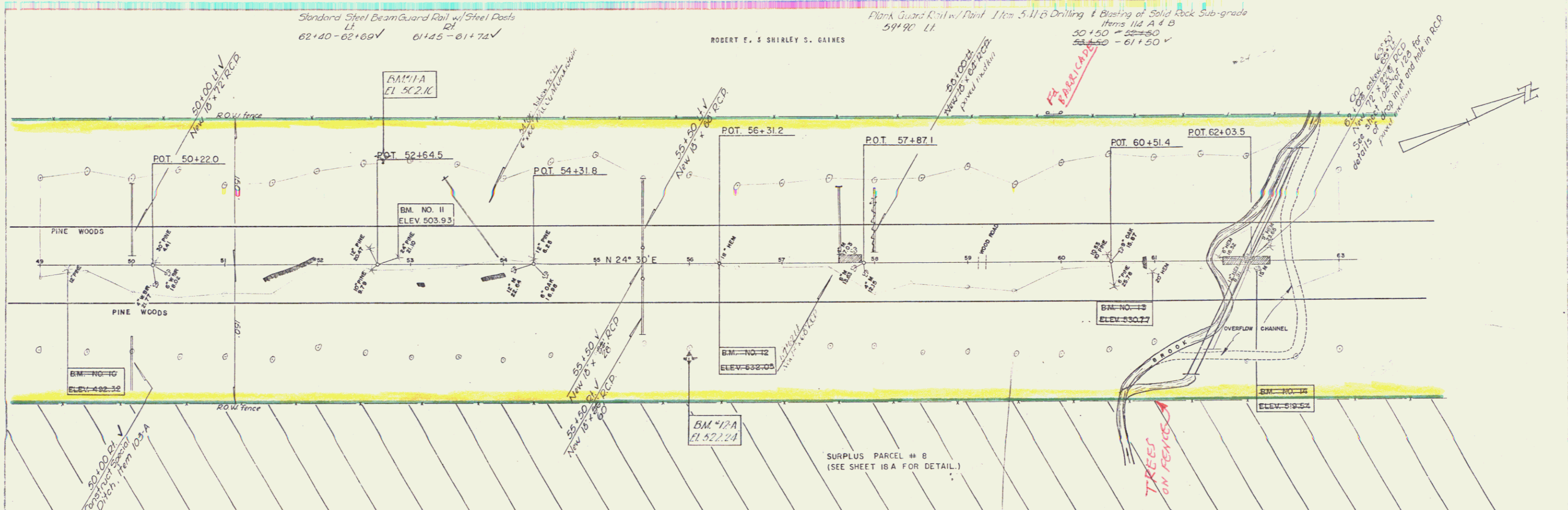


Standard Steel Beam Guard Rail w/ Steel Posts  
 LT 62+40-62+60 ✓ 61+45-61+72 ✓

Plank Guard Rail w/ Rail Item 5-11.6 Drilling & Blasting of Solid Rock Sub-grade  
 59+90' LT

ROBERT E. & SHIRLEY S. GAINES

PLAN  
 DATE 10/20/95  
 DRAWN BY  
 CHECKED BY  
 TRACED  
 AIA 6-JR  
 10/20/95



BM NO. 10 - S.I.R. 12" PINE - 3' RT - STA. 49+29 - EL. 492.32  
 BM NO. 11 - S.I.R. 24" PINE - 75' LT - STA. 52+36 - EL. 503.93  
 BM NO. 12 - S.I.R. 18" HEMLOCK - 1' LT - STA. 56+31 - EL. 532.05  
 BM NO. 13 - S.I.R. 20" HEMLOCK - 105' RT - STA. 60+96 - EL. 530.77  
 BM NO. 14 - S.I.R. 15" MAPLE - 9' RT - STA. 62+10 - EL. 619.54

GULFORD - VERNON  
 PROJECT NO. 001-1(4)  
 SHEET 21 OF 125