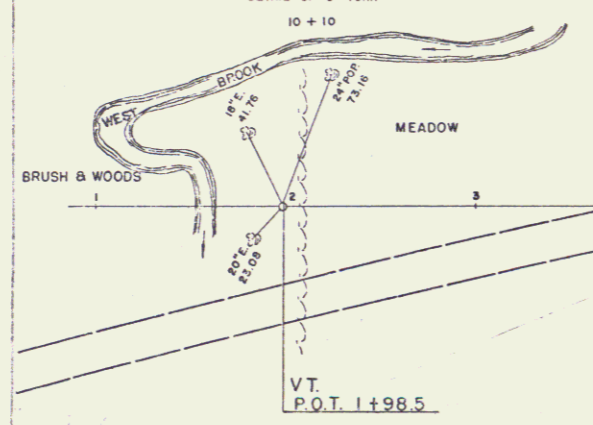
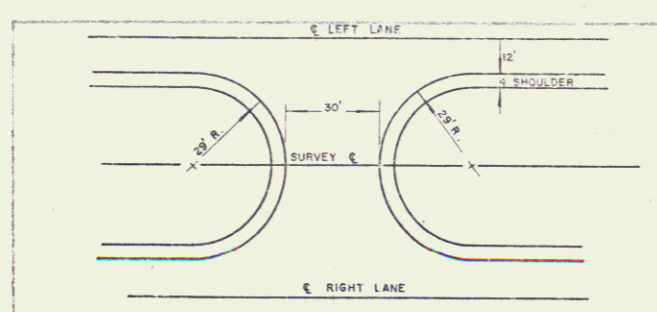


7/15
 7/15
 CARLSON
 JR. & AIA
 7/15



Mass P.I. 310+00.66 ± √
 Vt. 4+75.00

Drilling & Blasting of Solid Rock Subgrade
 Items 11A & B
 13+25 - 17+00

Mass. 315+00.00
 END PROJECT

- Vt. 10+03.32
 BEGIN PROJECT
 IN 001-1-(1)

Construct U-Turn
 10+10 bridge
 41.32 RT. Sta. 16+42.14

EXCESS PARCEL # 2001

$\Delta 22^\circ 24' 10'' \checkmark$
 D 1'
 R 5729.56
 T 1134.63
 L 2240.23
 E 111.24
 Bank 3/4" per foot

NOTE: CONSTRUCT TEMPORARY CHANNEL
 PENDING COMPLETION OF MASS. CONSTRUCTION

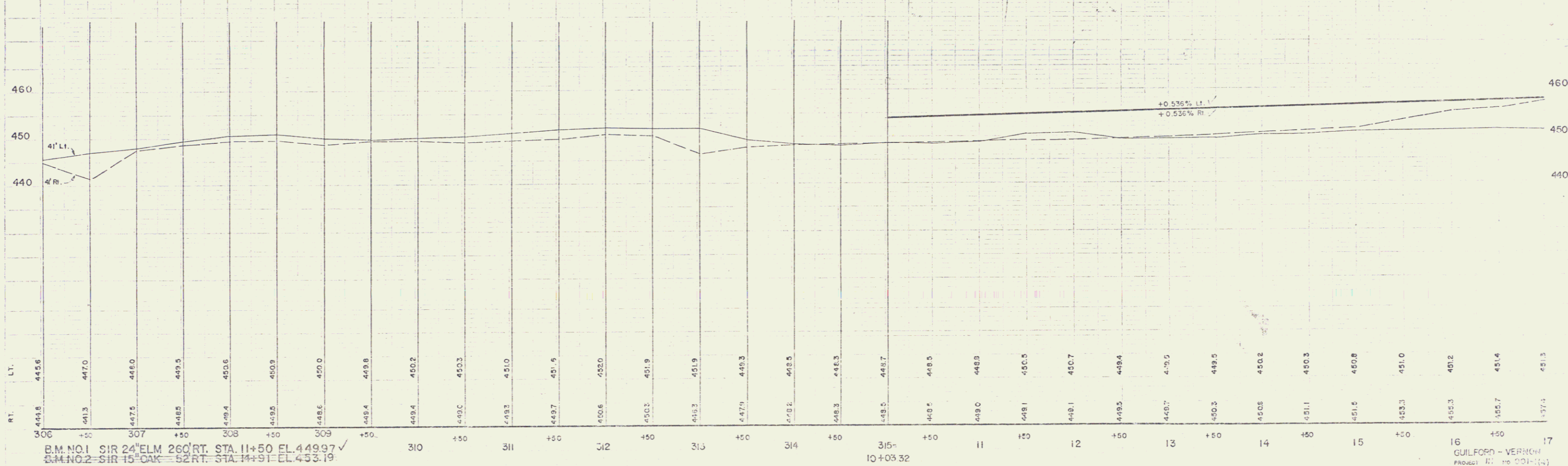
BEGIN FENCE

BM #1
 EL. 449.974

ALFRED W. & ANNA K. SMITH
 #1A
 79.0 ACRES ±
 STA. 10+03.32-38+00 ±

BM #2-A
 46.5.6.4

See sheets 10 & 17
 for approach 17+00 Lt.
 SURPLUS PARCELS # 4, 5 & 7
 SEE SHEET 18A FOR DETAIL



B.M. NO. 1 S1R 24' ELM 260' RT. STA. 11+50 EL. 449.97 √
 B.M. NO. 2 S1R 15' OAK - 52' RT. STA. 14+91 EL. 453.19
 B.M. NO. 2A SUR. C' CUP. 125' RT. STA. 10+00 EL. 463.64

GUILFORD - VERMONT
 PROJECT NO. 001-1-(1)
 SHEET 17 OF 19