

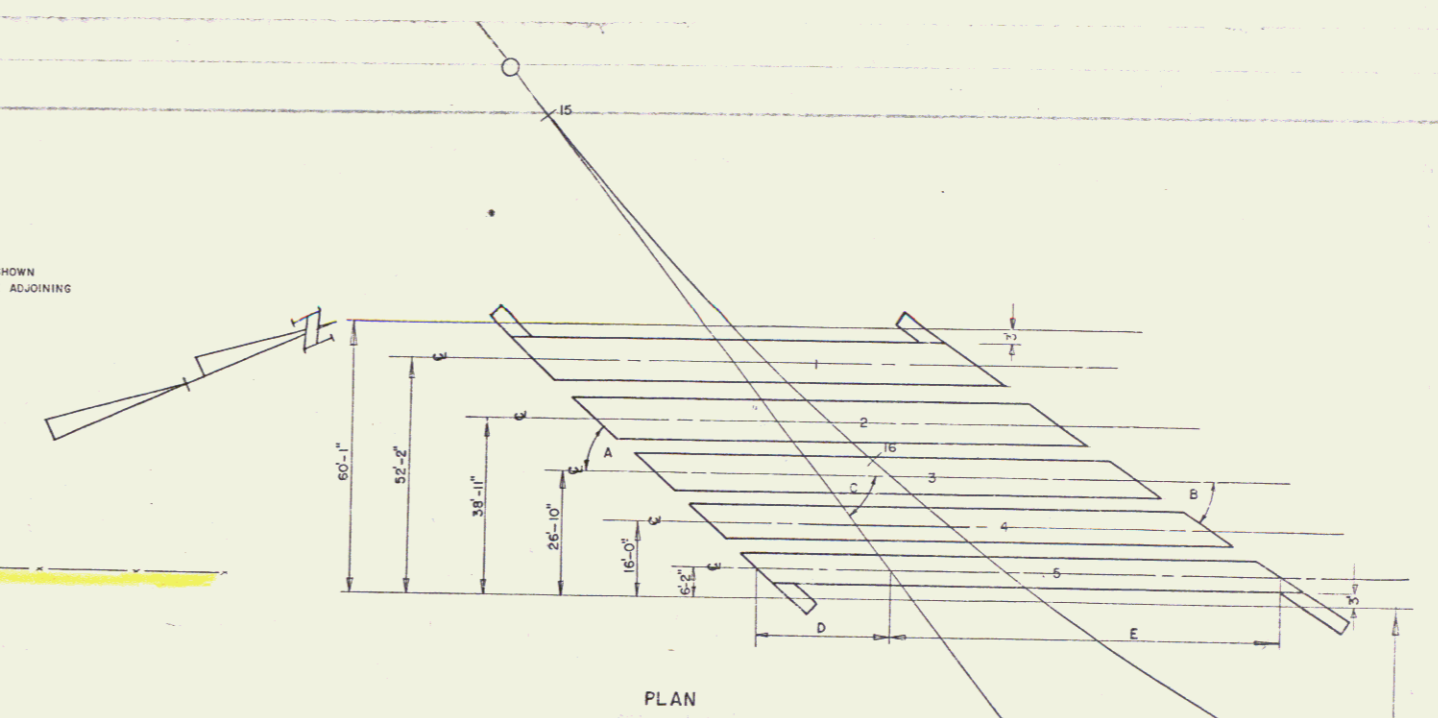
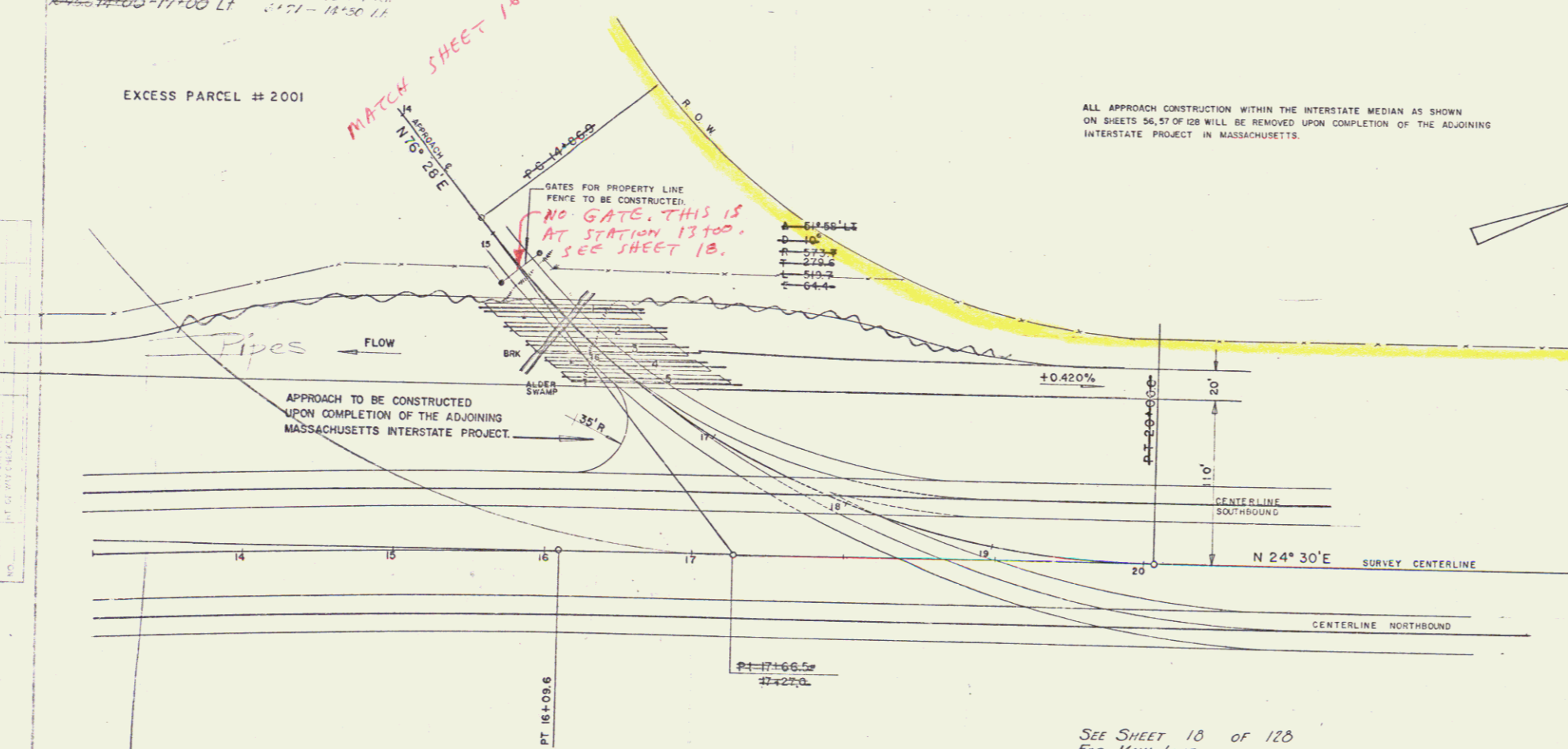
THREE CABLE GUARD RAIL W/ STEEL POSTS
 10100-10146 RT 6164-1379 LL
 11100-11100 LT 1171-1130 LL

EXCESS PARCEL # 2001

MATCH SHEET 16
 APPROACH 16
 N 15° 28' E

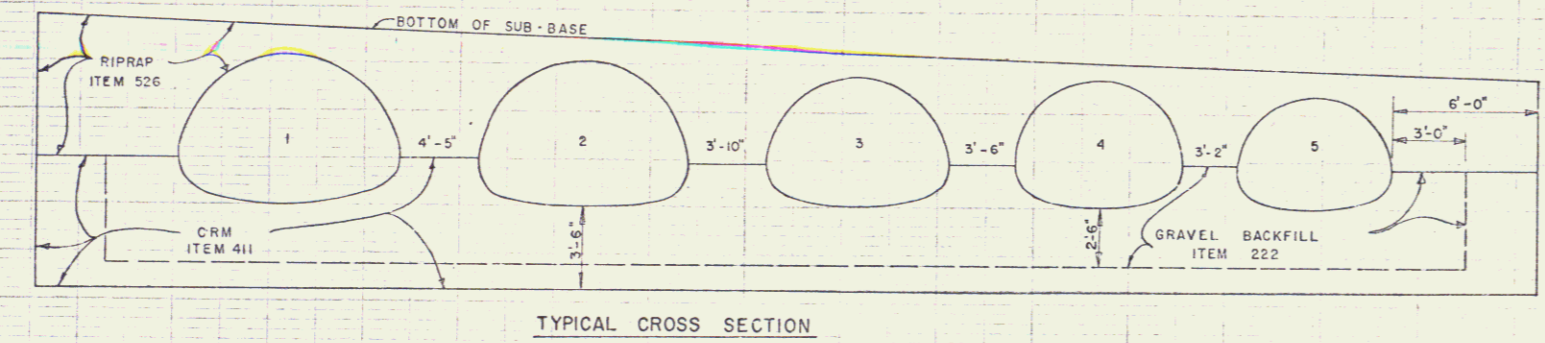
GATES FOR PROPERTY LINE
 FENCE TO BE CONSTRUCTED
 NO GATE. THIS IS
 AT STATION 13+00.
 SEE SHEET 18.

ALL APPROACH CONSTRUCTION WITHIN THE INTERSTATE MEDIAN AS SHOWN
 ON SHEETS 56,57 OF 128 WILL BE REMOVED UPON COMPLETION OF THE ADJOINING
 INTERSTATE PROJECT IN MASSACHUSETTS.

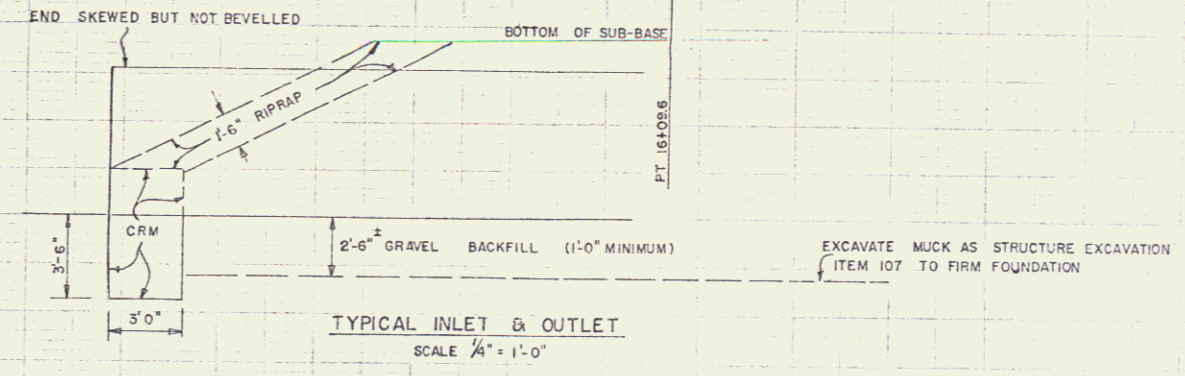


NO.	PIPE ARCH	WTWY.	END	CUT	ASKEW	RIVERY	LENGTH	TOTAL LENGTH	GAGE	ELEV. OUTLET	ELEV. INLET
1	9'-4" x 6'-3"	46	44°	36°	51° 58'	40'	22'	92'	8	449.54	449.95
2	8'-10" x 6'-1"	43	41°	36°	51° 58'	36'	60'	96'	8	449.60	450.03
3	7'-8" x 5'-5"	33	41°	36°	51° 58'	32'	66'	98'	8	449.65	450.09
4	7'-0" x 5'-1"	28	41°	33°	51° 58'	28'	74'	102'	8	449.70	450.16
5	6'-4" x 4'-9"	24	4°	33°	51° 58'	26'	82'	106'	8	449.74	450.26

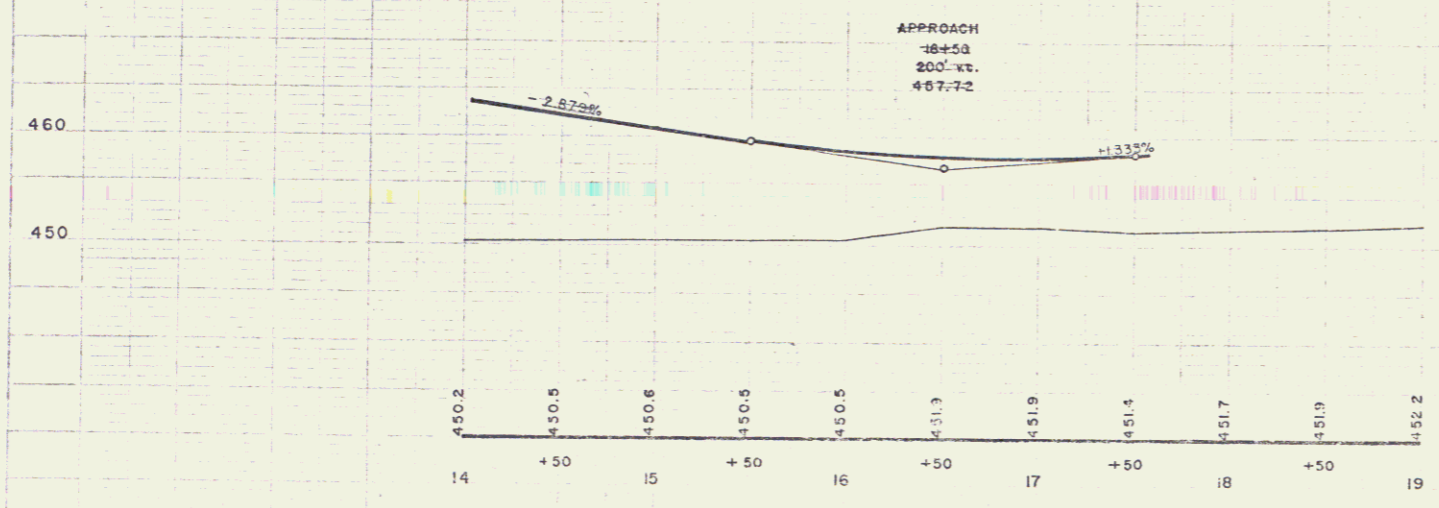
SEE SHEET 18 OF 128
 FOR MAIN LINE



TYPICAL CROSS SECTION



TYPICAL INLET & OUTLET
 SCALE 1/4" = 1'-0"



APPROACH
 18+5.3
 200' WT.
 457.72

ESTIMATED QUANTITIES

106-A	CHANNEL EXCAVATION OF EARTH	1115 cy.
107	STRUCTURE EXCAVATION	650 cy.
222	GRAVEL BACKFILL	700 cy.
411	CEMENT RUBBLE MASONRY	100 cy.
429-B	CORR GALV METAL PLATE PIPE ARCHES (120,000 lbs.)	5 ls.
526	RIPRAP FOR BANK PROTECTION	95 cy.

GUILFORD - VERNON
 APPROACH
 17+00 LT.
 SHEET 17 OF 128
 PROJ. IN No. 001-1(4)