

Drilling & Blasting of Solid Rock Subgrade
 Item 114 MOP
 900+00 to 913+00 LT
 903+00 to 913+00 LT
 903+00 to 913+00 LT
 U.S. Rte. 5
 337+90 to 400+00
 400+00 to 404+00

Excavation & Removal of Road Surface on Discontinued Roadways
 Item 118
 388+00 to 398+00 RT
 U.S. Rte. 5

Construct Drives
 387+40 LT

Note: Location of Underdrain to be determined by the Engineer

Item No. 555 - Bituminous Concrete Sub
 899+00 to 920+00 RT
 907+00 to 912+00 RT
 898+00 to 903+50 LT
 906+00 to 912+00 LT
 SPECIAL DITCH ITEM 103-A
 U.S. 5 385+50 TO 389+00 LT

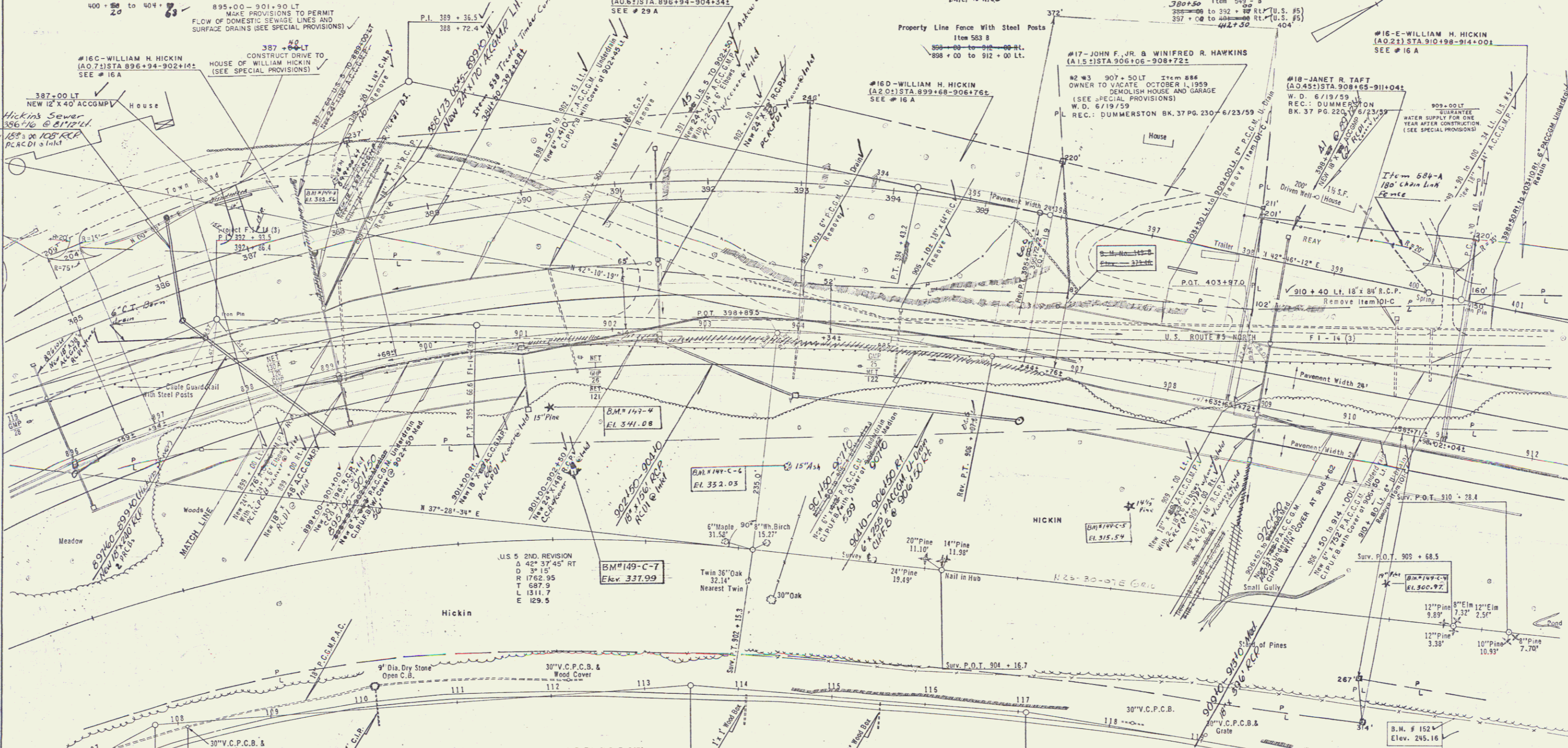
Bituminous Grouted Stone Gutter
 Item No. 553
 909+00 RT LT

Paved Ditch
 894+00 RT
 Berm Ditch
 894+00 RT

Paved Median Gutter
 Item No. 361-B
 899+00 to 899+25
 907+50 to 907+75
 908+75 to 909+00
 901+00 to 901+25
 898+00 to 898+25

Three Cable Guard Rail with Steel Posts
 898+00 to 901+00 RT
 906+00 to 912+00 RT
 898+00 to 912+00 LT Median

NO.	DATE	REVISION	TOTAL SHEETS
1	VT. I-91-1(9)	POST PLAN	58 530



U.S. 5 2ND REVISION
 $\Delta = 42^\circ 37' 45''$ RT
 $D = 31.15'$
 $R = 1637.28'$
 $T = 1229.9'$
 $L = 2103.31'$
 $E = 410.5'$
 BANK 1" PER FT.

INTERSTATE REVISED CURVE DATA
 $\Delta = 73^\circ 49' 31''$ RT
 $D = 31.30'$
 $R = 1637.28'$
 $T = 1229.9'$
 $L = 2103.31'$
 $E = 410.5'$
 BANK 3/4" PER FT.

SURVEY CURVE DATA
 U.S. #5 RELOCATED
 $\Delta = 42^\circ 37' 45''$ RT
 $D = 41.00'$
 $R = 1432.69'$
 $T = 559.0'$
 $L = 1065.7'$
 $E = 105.2'$
 BANK 3/4" PER FT.

STATE OF VERMONT
 DEPARTMENT OF HIGHWAYS
 INTERSTATE PROJECT in the towns of
 BRATTLEBORO - DUMMERSTON - PUTNEY

THE CLARKESON ENGINEERING CO., INC.
 CONSULTING ENGINEERS
 BOSTON MASSACHUSETTS
 SURVEYED BY *[Signature]* CHECKED BY *[Signature]* SCALE 1" = 40'
 DRAWN BY *[Signature]* IN CHARGE *[Signature]* DATE
 PROJECT NO I-91-1(9) SHEET 58 OF 530