

<p>Item 555 - Bituminous Concrete Curb</p> <p>818 + 00 to 825 + 00 RT. 825 + 00 to 834 + 20 LT. 828 + 00 to 834 + 00 RT. 818 + 00 to 822 + 50 LT. (Lt. Lane)</p>	<p>Stone Fill For Slope Protection - Item 522</p> <p>820 + 00 to 820 + 50 RT. 820 + 00 to 820 + 50 LT. 820 + 00 to 820 + 50 RT. 820 + 00 to 820 + 50 LT. 820 + 00 to 820 + 50 RT. 820 + 00 to 820 + 50 LT.</p>	<p>Paved Median Gutter</p> <p>Item No. 553</p> <p>824 + 00 to 825 + 00 825 + 00 to 826 + 00 826 + 00 to 827 + 00 827 + 00 to 828 + 00</p>	<p>Bituminous Grouted Stone Gutter</p> <p>Item No. 553</p> <p>828 + 00 to 829 + 00 (Lt. Lane) 829 + 00 to 830 + 00 RT. 830 + 00 to 831 + 00 LT. 831 + 00 to 832 + 00 RT. 832 + 00 to 833 + 00 LT. 833 + 00 to 834 + 00 RT. 834 + 00 to 835 + 00 LT. 835 + 00 to 836 + 00 RT.</p>	<p>Three Cable Guard Rail With Steel Posts</p> <p>Item No. 553</p> <p>818 + 00 to 830 + 00 RT. 818 + 00 to 824 + 00 LT. 829 + 00 to 834 + 00 RT. 828 + 00 to 834 + 00 RT.</p>	<p>Gravel Backfill</p> <p>Item #222</p> <p>818 + 10 to 824 + 00 RT. 829 + 00 to 831 + 00 LT. 830 + 00 to 833 + 50 LT.</p>
--	--	---	--	---	--

Channel Excavation of Earth Item 106-A
 0 + 55 Chan. To 0 + 62 Chan.
 3 + 12 Chan. To 6 + 50 Chan.

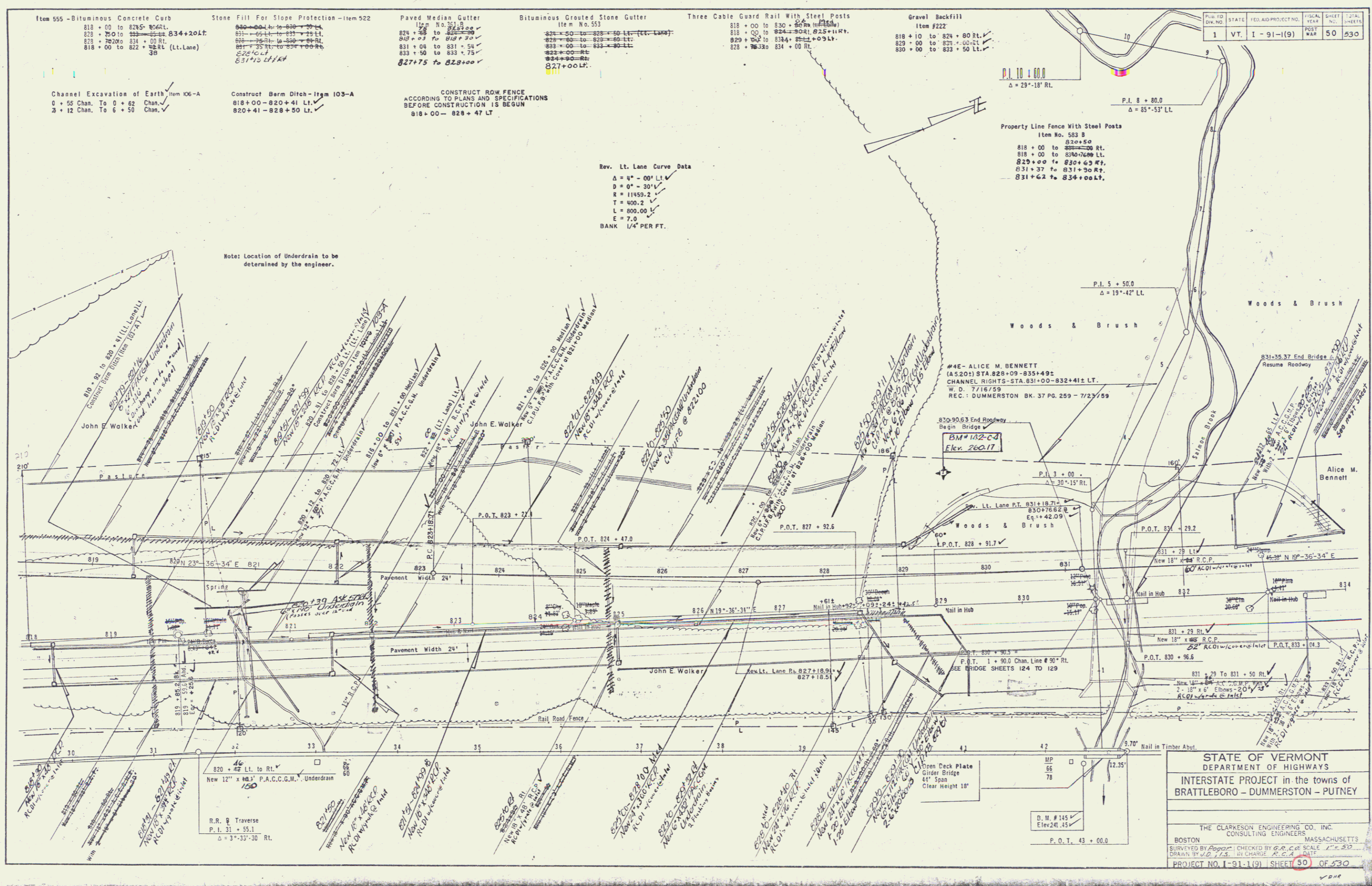
Construct Berm Ditch - Item 103-A
 818 + 00 - 820 + 41 Lt.
 820 + 41 - 828 + 50 Lt.

CONSTRUCT ROW FENCE
 ACCORDING TO PLANS AND SPECIFICATIONS
 BEFORE CONSTRUCTION IS BEGUN
 818 + 00 - 828 + 47 LT.

Rev. Lt. Lane Curve Data

$\Delta = 9^\circ - 00' \text{ LT.}$
 $R = 94 - 30' \text{ LT.}$
 $E = 11450.2$
 $T = 400.2$
 $L = 800.00 \text{ LT.}$
 $E = 7.0$
 BANK 1/4" PER FT.

Note: Location of Underdrain to be determined by the engineer.



STATE OF VERMONT
 DEPARTMENT OF HIGHWAYS
 INTERSTATE PROJECT in the towns of
 BRATTLEBORO - DUMMERSTON - PUTNEY

THE CLARKSON ENGINEERING CO. INC.
 CONSULTING ENGINEERS

BOSTON MASSACHUSETTS
 SURVEYED BY *Robert* CHECKED BY *G.R.C.* SCALE 1" = 100'
 DRAWN BY *J.C.* IN CHARGE *R.C.A.* DATE *7/2/59*

PROJECT NO. 1-91-1(9) SHEET 30 OF 530

15