

Paved Median Gutter
Item No. 361-B
628 + 85 To 629 + 35
632 + 50 To 632 + 75
637 + 50 To 637 + 75
641 + 50 To 641 + 75

Construct Special Ditch
Item No. 103-A
630 + 00 To 630 + 50 Lt.
635 + 65 To 635 + 33 Rt.
635 + 00 To 635 + 32 Lt.

U-Turn
632+100

Granite Slope Edging
Item No. 556-A
627+43-637+95 Lt.
630+00-639+19 Lt.
630+00-639+19 Lt.
630+00-639+19 Lt.

Three Cable Guard Rail With Steel Posts
Item No. 557-A
627+62 To 632+88 Rt. 47
634+07 To 636+48 Rt.
635+00 To 643+50 Lt. 65

Property Line Fence with Steel Posts
Item No. 593-B
629+00 To 630+00 Lt. 634+34 Rt.
634+00 To 635+00 Lt. 635+73 Lt.
636+17 To 637+00 Lt.
634+05 To 635+00 Rt.

Stone Fill for Slope Protection Item 522
635+70 To 636+00 Lt.
634+39 To 635+00 Lt.

PUB. NO.	STATE	PUB. AND PROJ. NO.	P.L. YEAR	SHEET NO.	TOTAL SHEETS
1	VT	I-91-1(9)		28	530

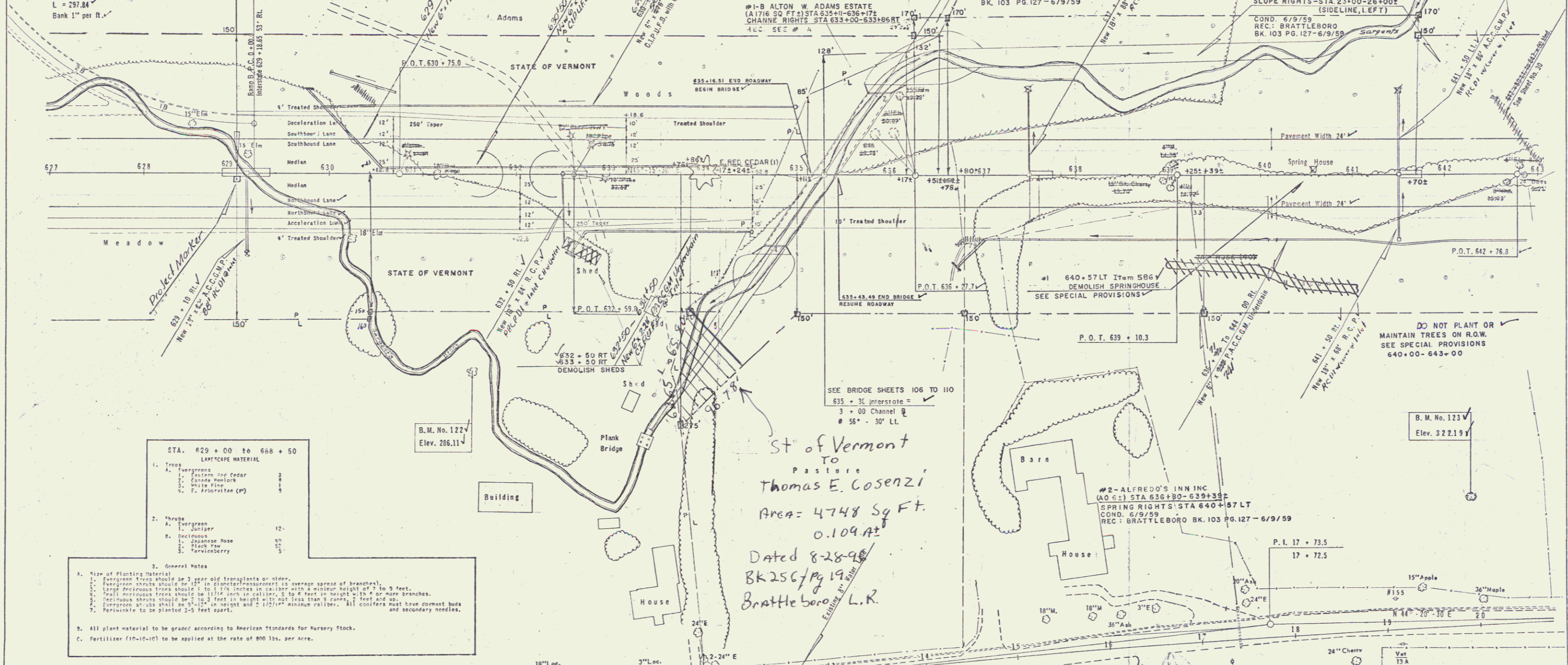
RAMP B
Δ = 47' - 40" RL
D = 16.00'
R = 350'
T = 158.15'
L = 297.84'
Bank 1" per ft.

END PROJECT	BEGIN PROJECT
1 - 91 - 1 (2)	1 - 91 - 1 (9)

Note: Location of Underdrain to be determined by the Engineer

Bituminous Grouted Stone Gutter
Item 553
629+10 Rt.
637+50 Lt.
638+50 Lt.
636+00 - 637+00 Rt.

CONSTRUCT R.O.W. FENCE
ACCORDING TO PLANS AND SPECIFICATION
BEFORE CONSTRUCTION IS BEGUN
#3A - GLADYS P. ROWE
(ALL 7) STA. 633+76-653+44.3
SLOPE RIGHTS - STA. 23+00-26+00E
(SIDE LINE, LEFT)



STA. 629 + 00 to 668 + 50
LANDSCAPE MATERIAL

- Trees
 - Evergreens
 - Eastern Red Cedar
 - Canada Hemlock
 - White Pine
 - F. Prunifera (C)
- Shrubs
 - Evergreens
 - Juniper
 - Japanese Rose
 - Black Tea
 - Serviceberry

3. General Notes
1. Size of Planting Material
a. Evergreen trees should be 3 year old transplants or older.
b. Evergreen shrubs should be 1 1/2" to 2" diameter (measured at average spread of branches).
c. Large deciduous trees should be 1 1/2" to 2" diameter in calipers at 4" minimum height of 7 to 9 feet.
d. All deciduous trees should be 1 1/2" to 2" diameter in calipers, 5 to 8 feet in height, 2 1/2" to 4" diameter branches.
e. Deciduous shrubs should be 2 to 3 feet in height without less than 3 cords, 2 feet diameter.
f. Coverage all sites shall be 90% in height and 2 1/2" minimum caliper. All conifers must have dormant buds.
g. Plants must be planted 1-5 feet apart.

4. All plant material to be graded according to American Standards for Nursery Stock.
5. Fertilizer (16-16-16) to be applied at the rate of 800 lbs. per acre.

St of Vermont
to
Pasture
Thomas E. Cosenzi
Area = 4748 Sq Ft.
0.109 A
Dated 8-28-98
BK 25C / Pg 19
Brattleboro, L.R.

#2 - ALFREDO'S INN INC
(A.O.C.) STA. 636+80-639+33
SPRING RIGHTS STA. 640+57 LT
COND. 6/9/59
REC. BRATTLEBORO BK. 103 PG. 127 - 6/9/59

STATE OF VERMONT
DEPARTMENT OF HIGHWAYS
INTERSTATE PROJECT in the towns of
BRATTLEBORO - DUMMERSTON - PUTNEY

THE CLARKSON ENGINEERING CO., INC.
CONSULTING ENGINEERS
BOSTON MASSACHUSETTS
SURVEYED BY [Signature] CHECKED BY [Signature] SCALE 1" = 50'
PROJECT NO. I-91-1(9) SHEET 28 OF 53