

\* THREE CABLE GUARD RAIL WITH LIGHT STEEL POSTS ITEM 538  
 SB 3015 + 63.4 - 3023 + 32.4  
 SB 3026 + 27.4 - 3026 + 00.4  
 SB 3015 + 34.4 - 3023 + 4.4  
 NB 3015 + 84.4 - 3022 + 29.4  
 NB 3026 + 96.4 - 3026 + 00.4  
 NB 3017 + 58.4 - 3022 + 34.4  
 NB 3026 + 83.4 - 3026 + 00.4

\* STAGE II CONSTRUCTION ITEM

CONTROL OF ACCESS IS COMPLETE ON THIS SHEET

DRILLING & BLASTING OF SOLID ROCK SUBGRADE, ITEM 115  
 SB 3012 + 00' - 3013 + 50'  
 NB 3012 + 80' - 3014 + 50'

BITUM CONC SURF FOR GUTTERS & TRAFFIC ISLANDS ITEM 554  
 3024+00 Slope NB-RT

STA	LOC	OFFSET	DESCRIB
BL 3012+25	RT	350'	DUG SPRING
BL 3013+80	RT	15'	FARM POND
BL 3014+30	LT	15'	DUG SPRING
BL 3014+50	LT	170'	DUG SPRING & COLL. BOX
BL 3015+00	LT	650'	DRILLED WELL
BL 3020+00	RT	1800'	DUG SPRING
BL 3021+50	LT	300'	DUG WELL
BL 3021+50	LT	370'	DUG WELL & COLL. BOX
BL 3022+00	RT	1200'	FARM POND
BL 3022+60	LT	375'	FARM POND
BL 3023+80	LT	550'	DRILLED WELL
BL 3026+90	LT	535'	DRILLED WELL

TREATED TAPER  
 \* BITUM CONC CURB ITEM 555  
 SB 3020 + 05' - 3020 + 51.4  
 SB 3026 + 12' - 3026 + 51.4  
 NB 3023 + 99' - 3024 + 50.4  
 NB 3023 + 99' - 3024 + 44.4

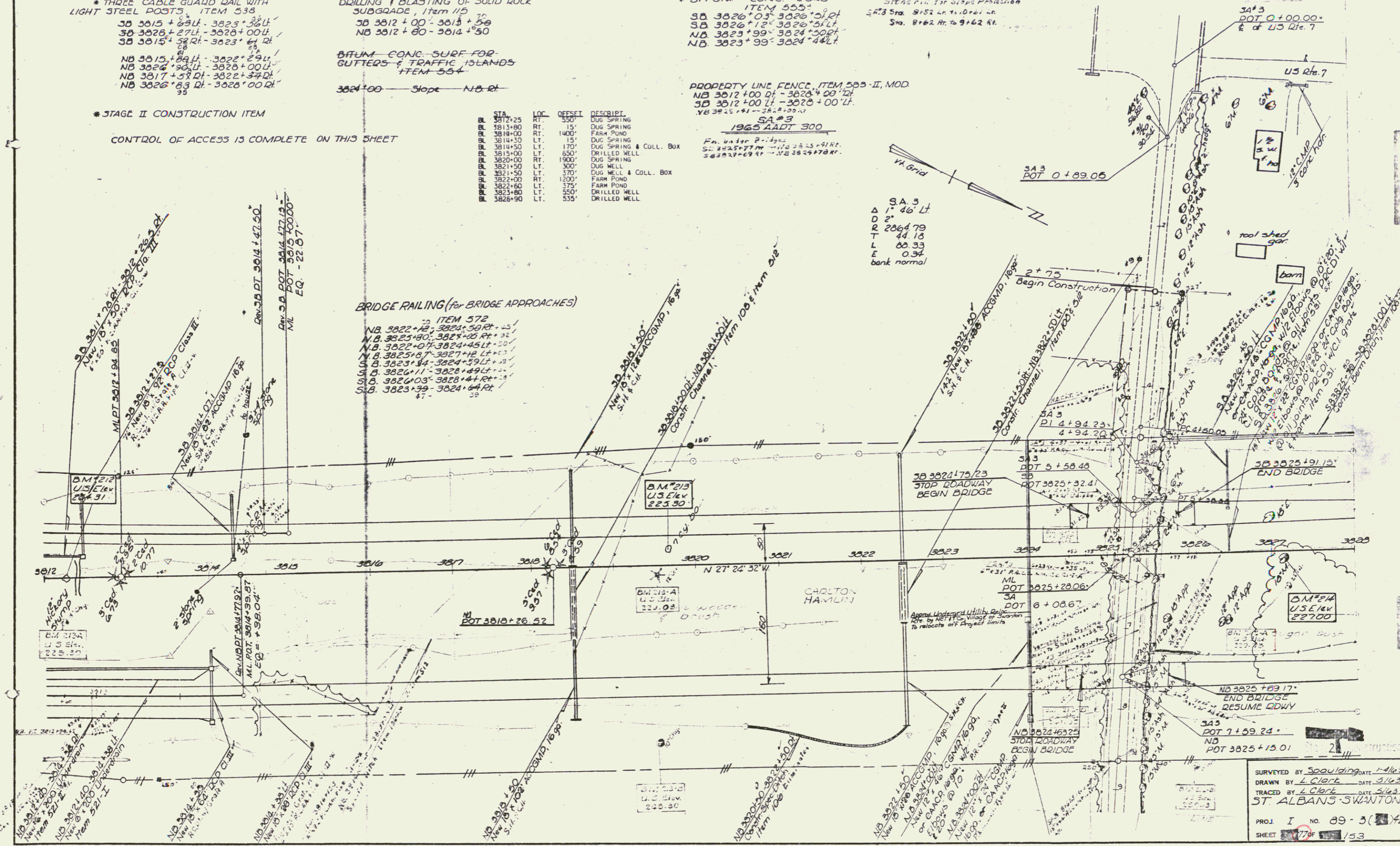
PROPERTY LINE FENCE, ITEM 503 - II, MOD  
 NB 3012 + 00' - 3026 + 00' LT  
 SB 3012 + 00' LT - 3026 + 00' LT  
 NB 3023 + 99' - 3024 + 50.4

SA #3  
 1965 AADT 300  
 Fr. Water 2-1/2' dia  
 S: 3025+77M - 3025+51RT  
 3025+77M - NB 3024+70RT

STRENGTH FOR SLOPE PROTECTION  
 SA #3 Str. 8' x 2' x 1.0' x 1.0'  
 Sta. 8+62.4 to 9+62.4

BRIDGE RAILING (for BRIDGE APPROACHES)

ITEM 572  
 NB 3022 + 12' - 3024 + 50.4 RT  
 NB 3025 + 10' - 3024 + 45.4 RT  
 NB 3022 + 07' - 3024 + 45.4 LT  
 NB 3025 + 10' - 3027 + 12.4 LT  
 SB 3023 + 84' - 3024 + 59.4 LT  
 SB 3026 + 11' - 3028 + 44.4 RT  
 SB 3026 + 03' - 3024 + 64.4 RT  
 SB 3025 + 39' - 3024 + 64.4 RT



SA 3  
 1' 46' Lt  
 Δ  
 R 2064.79  
 T 44.18  
 L 80.33  
 E 0.34  
 bank normal

SURVEYED BY Spaulding DATE 1-14-63  
 DRAWN BY L. Clerk DATE 3-16-63  
 TRACED BY L. Clerk DATE 3-16-63  
 ST. ALBANS-SWANTON  
 PROJ. I NO. 89-3(1) 142  
 SHEET 179 OF 153