

* THREE CABLE GUARD RAIL
W/STEEL POSTS, ITEM 535
JD 3748+00-3749+00 DI
NB 3746+00-3754+00 DI
NB 3746+00-3754+00 DI
SB 3748+00-3748+00 LT

DIP DAP FOR BANK PROTECTION MOD
FOR CULVERT ENDS, ITEM 513-B
NB 3748+00

STONE FILL FOR SLOPE PROTECTION
ITEM 512
NB 3755+00-3764+00 DI
DRILLING & BLASTING, ITEM 117
NB 3751+42-3751+54

DRILLING & BLASTING OF SOLID
ROCK SUBGRADE
ITEM 115
SB 3758+75-3752+79
JD 3764+75-3764+00
NB 3758+40-3764+00

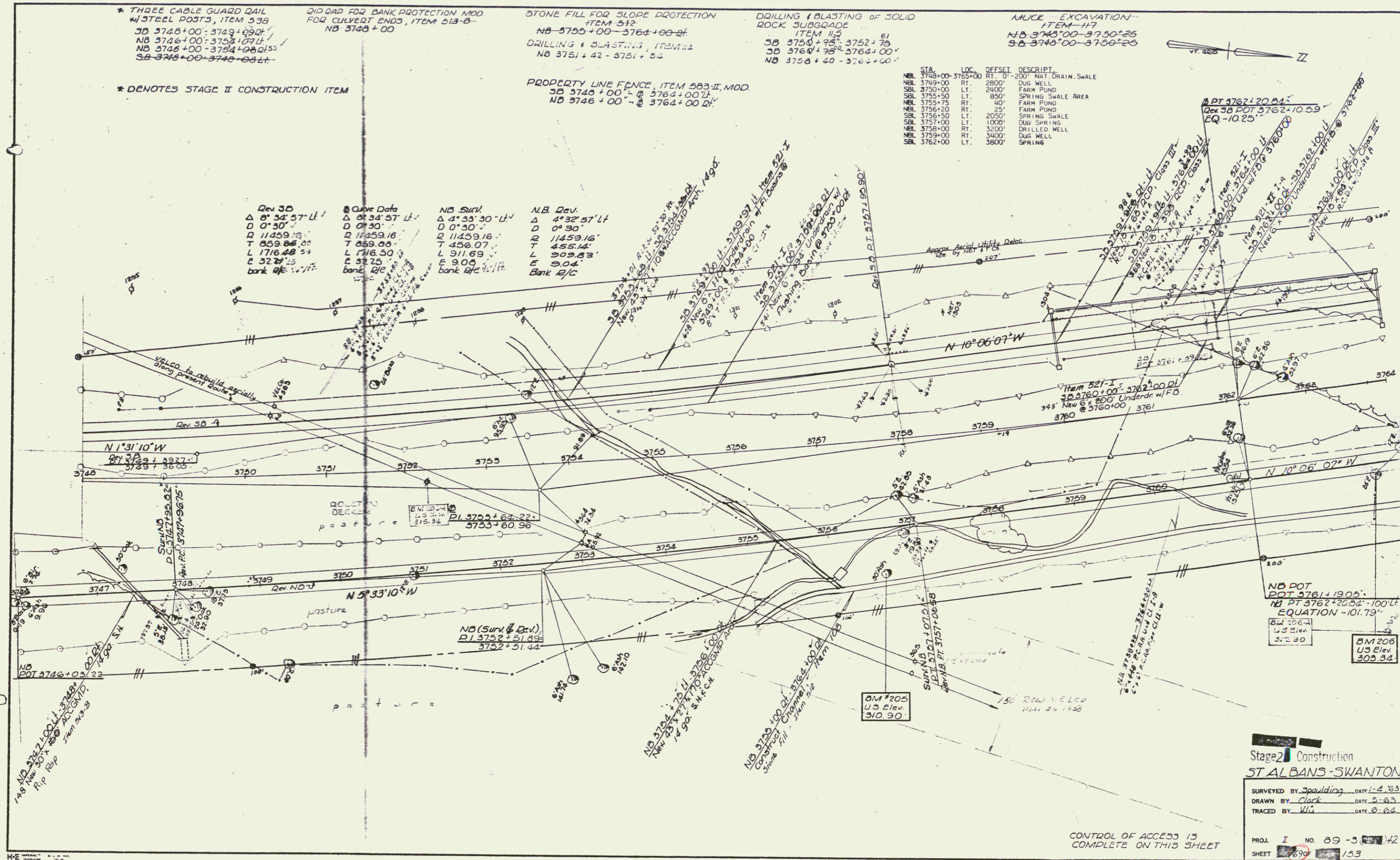
MUCK - EXCAVATION -
ITEM 117
NB 3748+00-3750+25
SB 3748+00-3750+25

* DENOTES STAGE II CONSTRUCTION ITEM

PROPERTY LINE FENCE, ITEM 503-II, MOD
JD 3748+00-3764+00 DI
NB 3746+00-3764+00 DI

STA	LOC	OFFSET	DESCRIPT.
NBL 3748+00	RT.	2800'	DUG WELL
NBL 3748+00	RT.	0'	NAT. DRAIN SWALE
SBL 3750+00	LT.	2400'	FARM POND
SBL 3755+50	LT.	850'	SPRING SWALE AREA
NBL 3755+75	RT.	40'	FARM POND
NBL 3756+20	RT.	25'	FARM POND
SBL 3755+50	LT.	2050'	SPRING SWALE
SBL 375+00	LT.	1000'	DUG SPRING
NBL 3758+00	RT.	3200'	DRILLED WELL
NBL 3758+00	RT.	3400'	DUG WELL
SBL 3762+00	LT.	3800'	SPRING

Rev. JD	Curve Data	NB Surv	NB Dev.
Δ 8° 34' 57" LT	Δ 8° 34' 57" LT	Δ 4° 33' 30" LT	Δ 4° 32' 57" LT
D 0° 30'	D 0° 30'	D 0° 30'	D 0° 30'
R 11459.16	R 11459.16	R 11459.16	R 11459.16
T 859.86	T 859.86	T 456.07	T 455.44
L 1716.48	L 1716.50	L 911.69	L 909.83
E 32.25	E 32.25	E 9.00	E 9.04
bank 1/2 ft	bank 1/2 ft	bank 1/2 ft	Bank 1/2 ft



Stage 2 Construction
ST ALBANS - SWANTON

SURVEYED BY Spaulding DATE 1-2-63
DRAWN BY Clark DATE 2-63
TRACED BY Wil DATE 8-64
PROJ. I NO. 89-3-142
SHEET 699 153

CONTROL OF ACCESS IS
COMPLETE ON THIS SHEET