

* THREE CABLE GUARD RAIL LIGHT STEEL POSTS ITEM 338
 SB 3744 +41- 3748 +00 LT
 NB 3741 +45- 3746 +00 LT
 NB 3742 +49- 3746 +00 LT
 SB 3744 +49- 3748 +00 LT
 3+11 7+23
 * STAGE II CONSTRUCTION ITEM

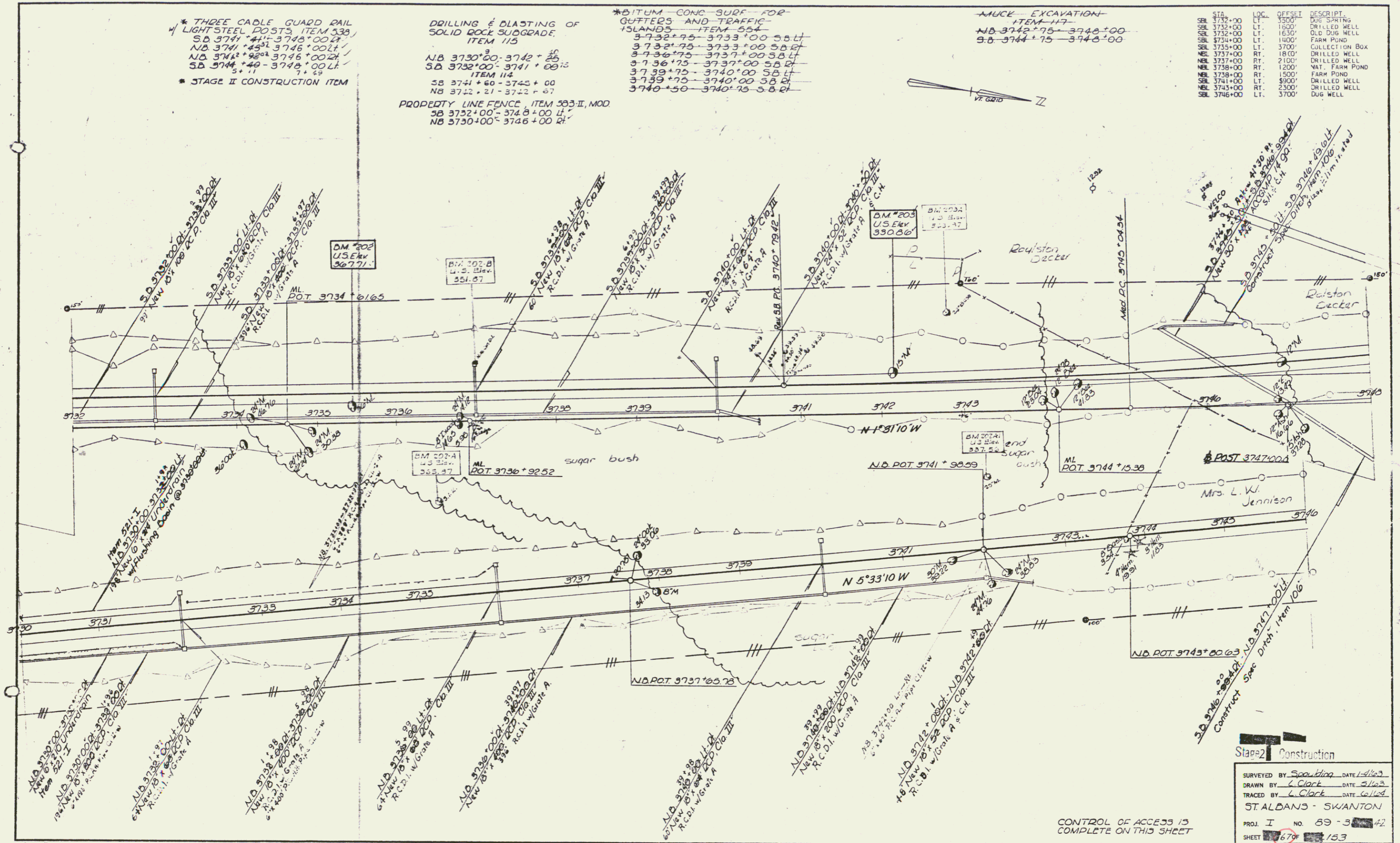
DRILLING & BLASTING OF SOLID ROCK SUBGRADE ITEM 115
 NB 3730+00- 3742 + 25
 SB 3732+00- 3741 + 00 LT
 ITEM 114
 SB 3741 + 60 - 3745 + 00
 NB 3742 + 21 - 3743 + 67

PROPERTY LINE FENCE ITEM 303 II, MOD
 SB 3752+00- 3748 +00 LT
 NB 3730+00- 3746 +00 RT

* BITUM CONC SURF FOR GUTTERS AND TRAFFIC ISLANDS ITEM 554
 SB 3732+75- 3733 +00 SB LT
 SB 3732+75- 3733 +00 SB RT
 SB 3736+75- 3737 +00 SB LT
 SB 3736+75- 3737 +00 SB RT
 SB 3739+75- 3740 +00 SB LT
 SB 3739+75- 3740 +00 SB RT
 SB 3740+50- 3740+75 SB RT

MAUCE EXCAVATION ITEM 117
 NB 3742+75- 3746 +00
 SB 3744+75- 3746 +00

STA	LOC	OFFSET	DESCRIPT
SB 3735+00	LT	3500'	DUG SPRING
SB 3732+00	LT	1500'	DRILLED WELL
SB 3732+00	LT	1630'	OLD DUG WELL
SB 3734+00	LT	1100'	FARM POND
SB 3735+00	LT	3700'	COLLECTION BOX
NEL 3737+00	RT	1800'	DRILLED WELL
NEL 3737+00	RT	2100'	DRILLED WELL
NEL 3738+00	RT	1200'	MAT FARM POND
NEL 3738+00	RT	1500'	FARM POND
SB 3741+00	LT	3500'	DRILLED WELL
NEL 3741+00	RT	2300'	DRILLED WELL
SB 3746+00	LT	3700'	DUG WELL



Stage 2 Construction

SURVEYED BY Scouting DATE 4/1/63
 DRAWN BY C. Clark DATE 5/1/63
 TRACED BY C. Clark DATE 5/1/63
 ST. ALDANS - SWANTON
 PROJ. I NO. 69-3-42
 SHEET 679 OF 153

CONTROL OF ACCESS IS COMPLETE ON THIS SHEET