

\* THREE CABLE GUARD RAIL w/ LIGHT STEEL POSTS, ITEM 538  
 NB 3715+98'-3723+19' DI  
 NB 3717+52'-3722+64' LF

\* BIT CONC SURF FOR GUTTERS AND TRAFFIC ISLANDS, ITEM 554  
 3725+75'-3726+00' SB LT  
 3725+75'-3726+00' SB RT  
 3725+75'-3729+00' SB LT  
 3725+75'-3729+00' SB RT

BLANK GUARD RAIL w/ PRESERVATIVE TREATMENT, ITEM 540  
 NB 3723+80' DI  
 SB 3724+55' LF

\* STAGE II CONSTRUCTION ITEM

DRILLING & BLASTING of SOLID ROCK SUBGRADE, ITEM 115  
 NB 3724+25'-3738+00'  
 SB 3724+80'-3732+00'  
 NB 3714+25'-3716+25'

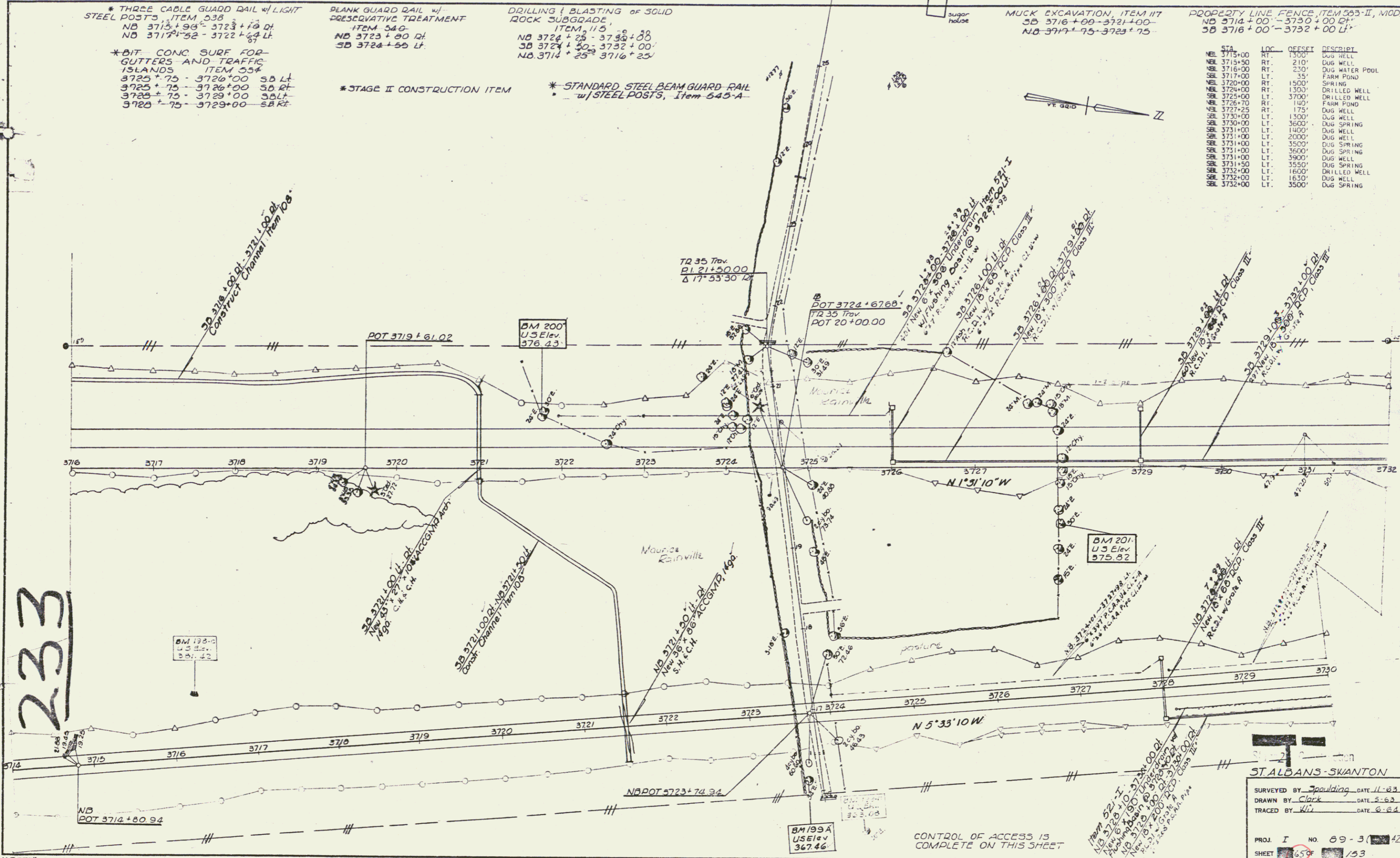
\* STANDARD STEEL BEAM GUARD RAIL w/ STEEL POSTS, Item 645-A

MUCK EXCAVATION, ITEM 117  
 SB 3716+00'-3721+00'-  
 NB 3717+75'-3723+75'

PROPERTY LINE FENCE, ITEM 505-II, MOD  
 NB 3714+00'-3730+00' DI  
 SB 3716+00'-3732+00' LF

STA	LOC	DEPTH	DESCRIBE
NEL 3715+00	RT	1500'	DUG WELL
NEL 3715+50	RT	210'	DUG WELL
NEL 3716+00	RT	230'	DUG WATER POOL
NEL 3717+00	LT	35'	FARM POND
NEL 3720+00	RT	1500'	SPRING
NEL 3724+00	RT	1300'	DRILLED WELL
NEL 3725+00	RT	3700'	DRILLED WELL
NEL 3726+70	RT	140'	FARM POND
NEL 3727+25	RT	175'	DUG WELL
NEL 3728+00	LT	1300'	DUG WELL
NEL 3730+00	LT	3600'	DUG SPRING
NEL 3731+00	LT	1400'	DUG WELL
NEL 3731+00	LT	2000'	DUG WELL
NEL 3731+00	LT	3500'	DUG SPRING
NEL 3731+00	LT	3600'	DUG SPRING
NEL 3731+00	LT	3900'	DUG WELL
NEL 3731+50	LT	3550'	DUG SPRING
NEL 3732+00	LT	1600'	DRILLED WELL
NEL 3732+00	LT	1630'	DUG WELL
NEL 3732+00	LT	3500'	DUG SPRING

233



ST. ALBANS - SKANTON  
 SURVEYED BY Spaulding DATE 11-63  
 DRAWN BY Clark DATE 5-64  
 TRACED BY WJ DATE 6-64  
 PROJ. I NO. 89-3-42  
 SHEET 65 OF 153

const  
 72