

PROPERTY LINE FENCE
 ITEM 533 II, MOD.
 Ramp A: 5'-00" L - 0+00 LT
 Ramp B: 7'-00" L - 10+75 LT
 SD 3620+00 - 3652+00 LT
 NB 3640+00 - 3650+00 LT

NB PI
 3641+70.92
 3637+24.03

*THREE CABLE GUARD RAIL
 w/ LIGHT STEEL POSTS, ITEM 538
 ND 3638+33 - 3642+63 LT
 ND 3648+33 - 3650+00 LT
 SD 3637+00 - 3641+00 RT
 NB 3649+00 - 3650+00 RT
 Ramp B: 7'-00" NB 3643+00 LT
 SB 3648+00 - 4'-00" RT Ramp A
 SB 3651+00 - 3652+00 LT
 SB 3651+00 - 3652+00 RT

CONSTRUCT U TURN @
 Rev. M.L. 3646+50
 TREATED TIMBER CURB, ITEM 555
 NB 3642+15 - Ramp B 7+00 RT
 SB 3637+36 - 3641+00 RT

Rev. B.L. Curve Data
 Δ 68° 31' 15" Rt.
 D 2° 15'
 R 2546.48
 T 1734.52
 L 3045.97
 Bnk. 3/4" per ft.

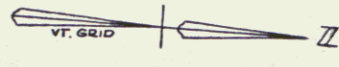
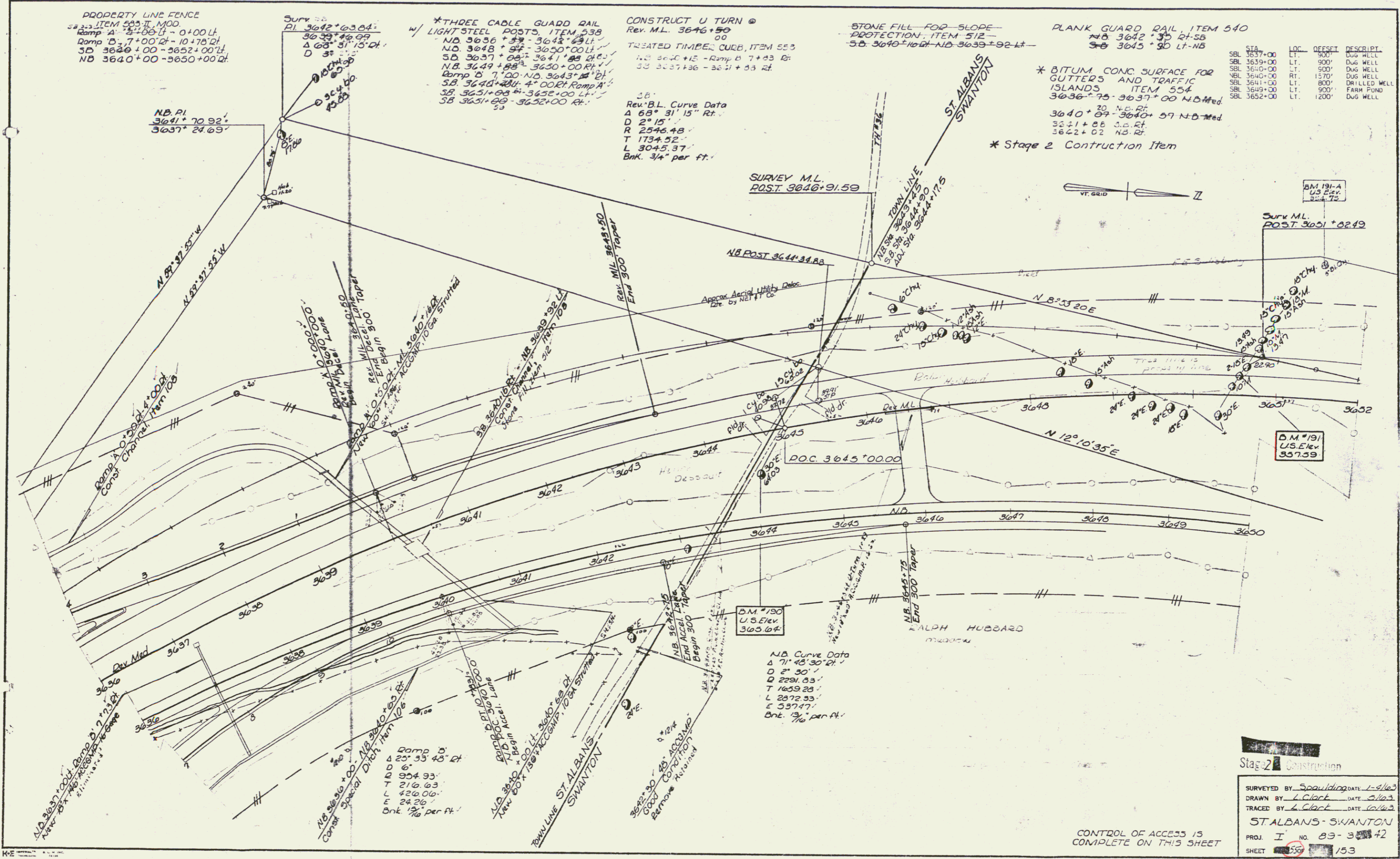
STONE FILL - FOR SLOPE
 PROTECTION, ITEM 512
 SB 3640+16 RT - NB 3638+92 LT

PLANK GUARD RAIL, ITEM 540
 NB 3642+35 RT - SB
 SB 3645+90 LT - NB

* BITUM CONC SURFACE FOR
 GUTTERS AND TRAFFIC
 ISLANDS, ITEM 554
 3636+75 - 3637+00 NB Med.
 3640+00 - 3640+59 NB Med.
 3641+00 S.D. RT.
 3642+02 NB RT.

* Stage 2 Construction Item

STA	LOC	OFFSET	DESCRIP.
SBL 3637+00	LT	900'	DUG WELL
SBL 3639+00	LT	900'	DUG WELL
SBL 3640+00	RT	1570'	DUG WELL
SBL 3641+00	LT	800'	DRILLED WELL
SBL 3649+00	LT	900'	FARM POND
SBL 3652+00	LT	1200'	DUG WELL



BM 191-A
 U.S. Elev.
 357.72

Survey M.L.
 Post 3651+02.19

DM #191
 U.S. Elev.
 357.59

DM #190
 U.S. Elev.
 365.64

NB Curve Data
 Δ 71° 45' 30" Rt.
 D 2° 30'
 T 2291.03
 L 2872.93
 E 3374.7
 Bnk. 3/4" per ft.

Ramp B
 Δ 25° 53' 48" Rt.
 D 6'
 T 954.93
 L 210.63
 E 24.26
 Bnk. 3/4" per ft.

Stage 2 Construction

SURVEYED BY Spaulding DATE 1-9-63
 DRAWN BY L. Clark DATE 5-1-63
 TRACED BY L. Clark DATE 6-1-63

ST ALBANS - SWANTON

PROJ. I NO. 83-303-72
 SHEET 559 153

CONTROL OF ACCESS IS
 COMPLETE ON THIS SHEET

Const
 67