

CONSTRUCT DRIVE
13+12 RT

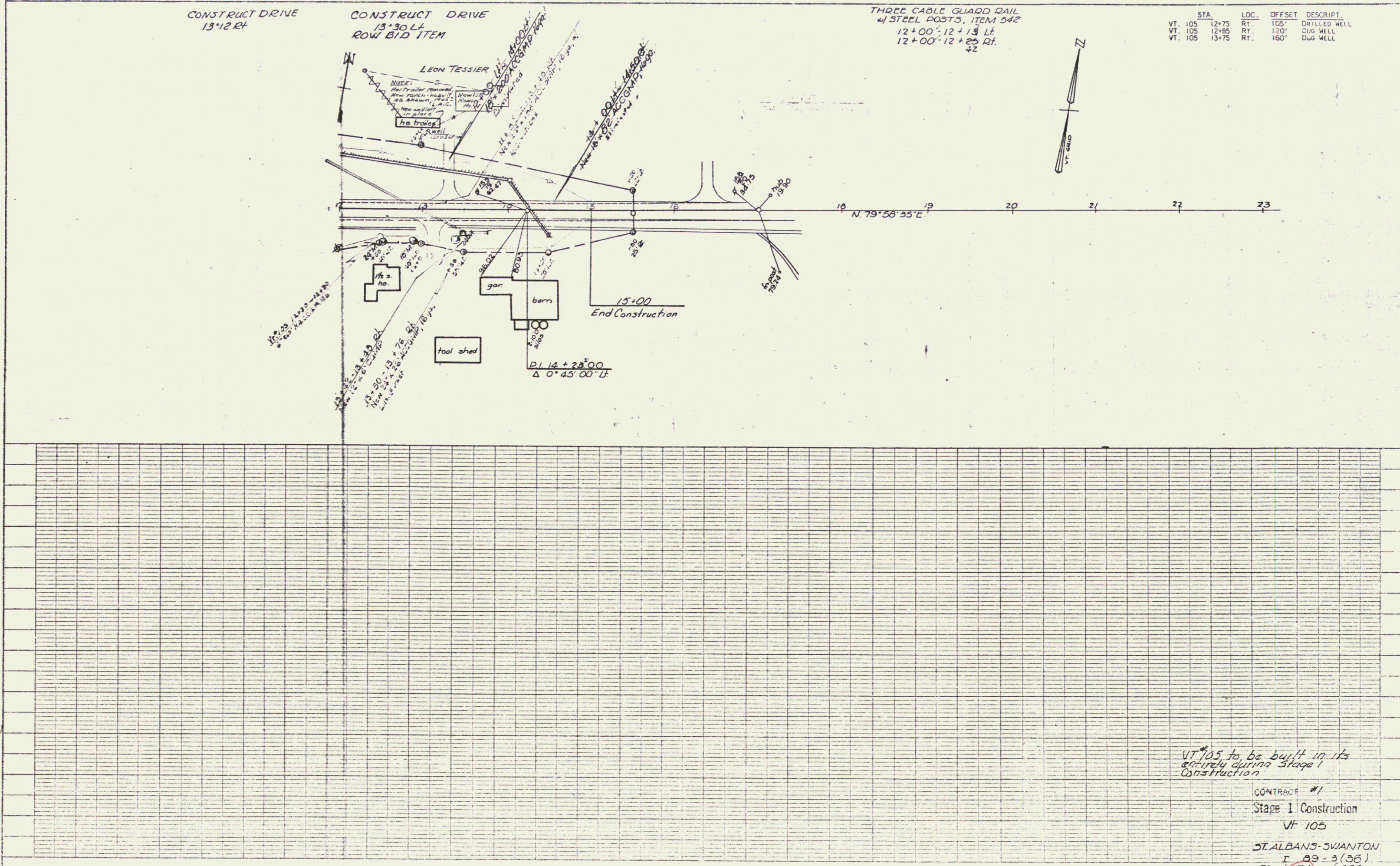
CONSTRUCT DRIVE
13+30 LT
ROW BID ITEM

THREE CABLE GUARD RAIL
w/ STEEL POSTS, ITEM 542
12+00-12+13 LT
12+00-12+25 RT
42

STA.	LOC.	OFFSET	DESCRIPT.
VT. 105 12+75	RT.	105'	DRILLED WELL
VT. 105 12+85	RT.	120'	DUG WELL
VT. 105 13+75	RT.	160'	DUG WELL

PLAN
SUBMITTED: _____
CHECKED: _____
DATE: _____
BY: _____

PROFILE
DATE: _____
BY: _____



VT 105 to be built in its
entirety during Stage 1
Construction

CONTRACT #1
Stage I Construction
VT 105
ST. ALBANS-SWANTON
R 89-3(36)
Sheet 51 of 298

SCALE: 1" = 40'