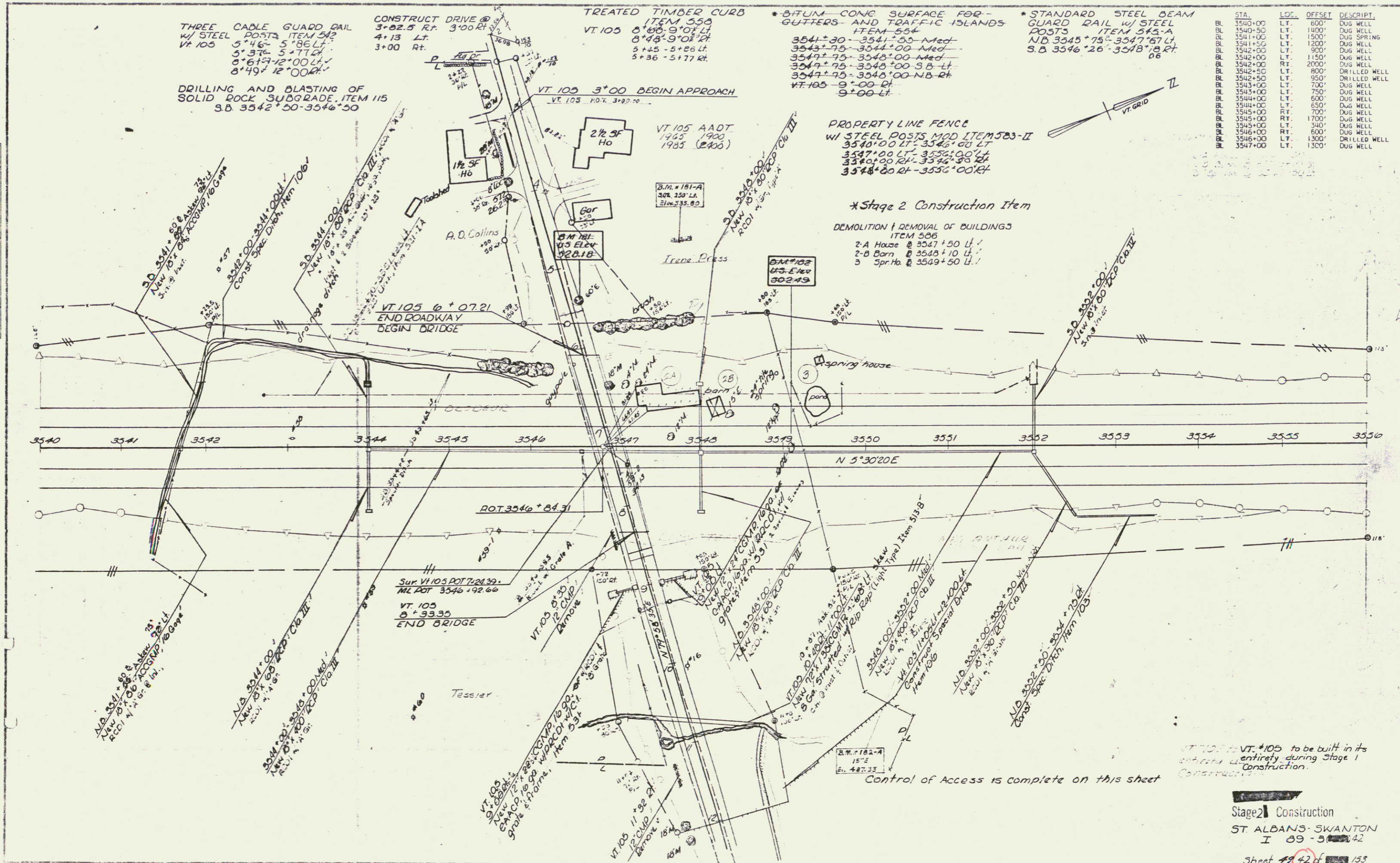


PLAN	DATE	BY
REVISIONS		
1. DATE		
2. DATE		
3. DATE		
4. DATE		
5. DATE		
6. DATE		
7. DATE		
8. DATE		
9. DATE		
10. DATE		



STA.	LOC.	OFFSET	DESCRPT.
BL 3540+00	LT.	600'	DUG WELL
BL 3540+50	LT.	1400'	DUG WELL
BL 3541+00	LT.	1500'	DUG SPRING
BL 3541+50	LT.	1200'	DUG WELL
BL 3542+00	LT.	900'	DUG WELL
BL 3542+00	LT.	1150'	DUG WELL
BL 3542+00	RT	2000'	DUG WELL
BL 3542+50	LT.	800'	DRILLED WELL
BL 3543+00	LT.	700'	DUG WELL
BL 3543+00	LT.	950'	DRILLED WELL
BL 3543+00	LT.	700'	DUG WELL
BL 3544+00	LT.	600'	DUG WELL
BL 3544+00	LT.	650'	DUG WELL
BL 3545+00	RT	700'	DUG WELL
BL 3545+00	RT	1700'	DUG WELL
BL 3545+00	LT.	340'	DUG WELL
BL 3546+00	RT.	600'	DUG WELL
BL 3546+00	LT.	1300'	DRILLED WELL
BL 3547+00	LT.	1300'	DUG WELL

VT 105 to be built in its entirety during Stage 1 Construction.

Control of Access is complete on this sheet

Stage 2 Construction
 ST. ALBANS-SWANTON
 I 89-3-42
 Sheet 42 of 153