

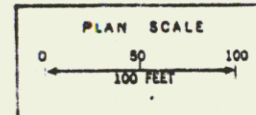
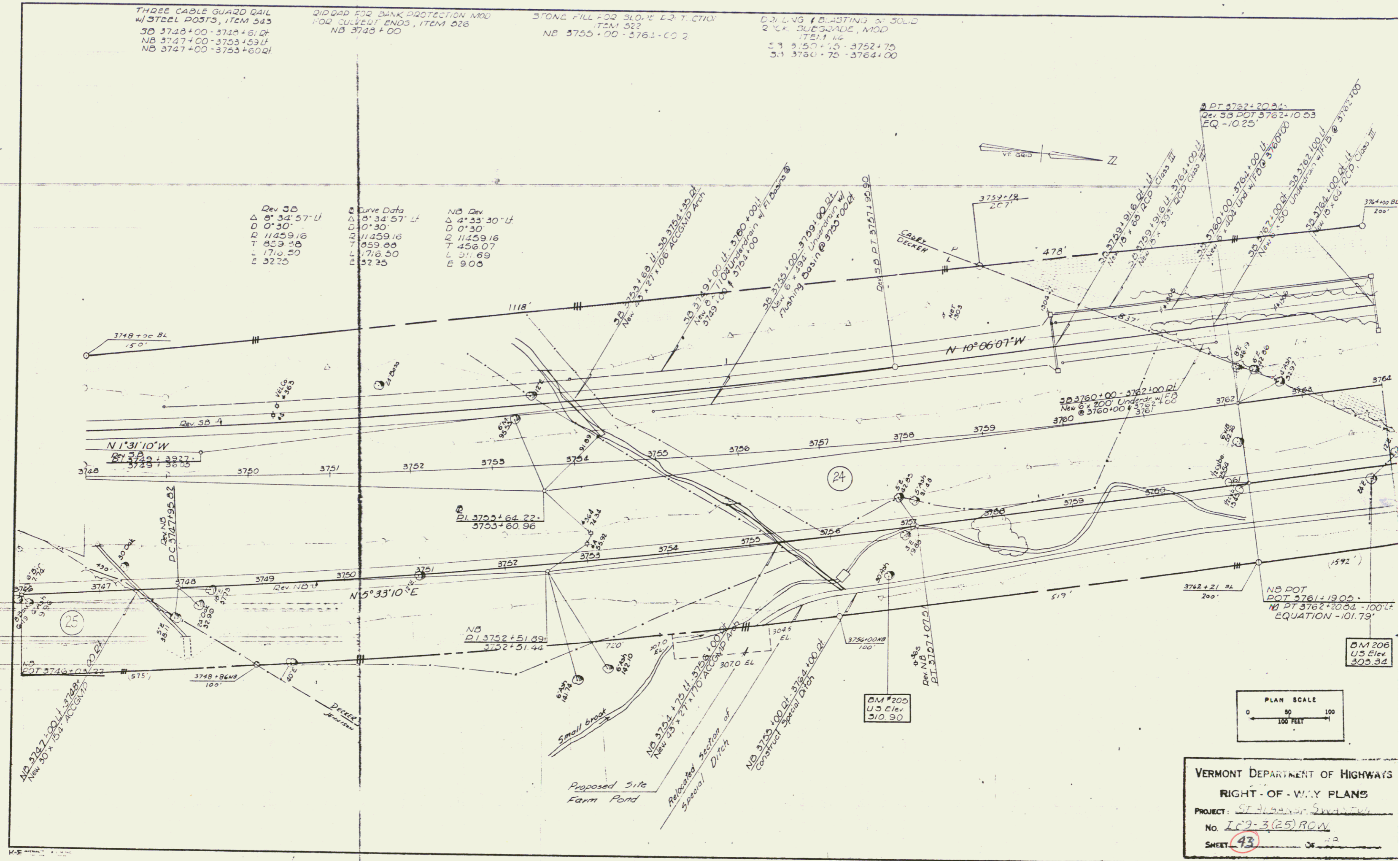
THREE CABLE GUARD RAIL
W/ STEEL POSTS, ITEM 543
SD 3748+00 - 3748+61.47
NB 3747+00 - 3753+53.47
NB 3747+00 - 3753+80.21

DIPDAD FOR BANK PROTECTION MOD
FOR CULVERT ENDS, ITEM 528
NB 3748+00

STONE FILL FOR 31.0" EQ T. CTION
ITEM 522
NB 3755+00 - 3761+00.2

DRILLING & BASTING OF SOLID
2" CK. SUESSADE, MOD
ITEM 14
S3 3750+75 - 3752+75
S3 3760+75 - 3764+00

Rev 3B	Curve Data	NB Rev
Δ 8° 34' 57" L	Δ 8° 34' 57" L	Δ 4° 33' 30" L
D 0' 30"	D 0' 30"	D 0' 30"
R 11459.16	R 11459.16	R 11459.16
T 859.28	T 859.88	T 456.07
L 1718.50	L 1718.50	L 911.69
E 3225	E 3235	E 908



VERMONT DEPARTMENT OF HIGHWAYS
 RIGHT-OF-WAY PLANS
 PROJECT: ST. HUBERT SWAMP
 No. IC-3(25)ROW
 SHEET 43 OF 42

41